



## LANDMARK SURVEYS

EARL R. DONAKER, P.S.

727 Cambridge Road  
Coshocton, Ohio 43812

(614) 623-0993  
1-800-842-3264

East Central Ohio Realty: 0.822 Ac.± to Jeffrey B. & Martha E. Prindle

Being **0.822 acres** more or less in Lot 1 of Sibleys Subdivision, of township 1 north, range 8 west, United States Military Lands, in the township of Falls, in the county of Muskingum, in the State of Ohio, and more particularly described as follows:

Beginning at an axle found at the northeast corner of Lot 18, Northbrook Subdivision, P.B. 9, pg. 11, said axle found being the TRUE POINT OF BEGINNING;

thence, along the north line of Northbrook Subdivision, P.B. 9, pg. 11, the following 2 courses:

1. thence, N.85°21'51"W. 300.61' to a point, (axle found, N 0.13', E 0.00');
2. thence, continuing N.85°21'51"W. 228.85' to an axle found;

thence, along the north line of The Woods Subdivision, P.B. 16, pages 149-151 the following 2 courses:

1. thence, continuing N.85°21'51"W. 135.95' to a 5/8" steel pin of record;
2. thence, continuing N.85°21'51"W. 51.05' to a 5/8" steel pin of record;

thence, through the property of East Central Ohio Realty, 1064-325, the following 2 courses:

1. thence, N.04°38'09"E. 50.00' to a point;
2. thence, S.85°21'51"E. 22.77' to a 5/8" steel pin of record;

thence, along the property line of Joseph & Kimberly Buckey, 1064-357, the following 2 courses:

1. thence, continuing S.85°21'51"E. 393.08' to a 5/8" steel pin of record;
2. thence, continuing S.85°21'51"E. 300.61' to a 5/8" steel pin of record;

thence, along the property line of Jeffery B. & Martha E. Prindle, 1064-632, S.04°38'09"W. 50.00' to the TRUE POINT OF BEGINNING, containing **0.822 acres** more or less and is subject to all easements, rights-of-way, or restrictions, whether recorded or implied.

Bearings are based on D.B. 1064, page 632 and are for angular calculations only. Pertinent documents: tax maps; deeds: 1064-325, 1064-357, 1064-632, 1101-52, 767-190, 793-179, 736-84; Plat Books: 16 pp. 149-151, 9 pg. 11; surveys by: Earl R. Donaker, R.L. Daniels.

Prior deed: 1064-325.

Description and plat by Landmark Surveys, Earl R. Donaker, Professional Surveyor, #7142, from surveys and descriptions of record in the month of March in the year of our Lord one thousand nine hundred and ninety-six.

DESCRIPTION APPROVED  
FOR AUDITORS TRANSFER

BY

5-16-96

727 Cambridge Road  
Coshocton, Ohio 43812

## LANDMARK SURVEYS

EARL R. DONAKER, P. S.

tel: (614) 623-0993  
1-800-842-3264

Pertinent documents: Tax maps:

Deeds: 1064-325, 1064-357, 1064-632  
1101-52, 767-190, 793-179, 736-88

Surveys by: Earl R. Donaker  
R.L. Daniels

Plat Books: 16. pp. 149-151. 9. pg. 11

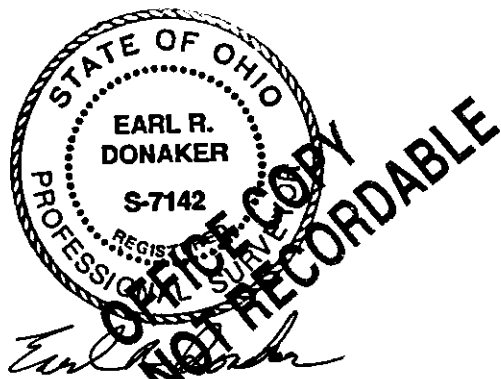
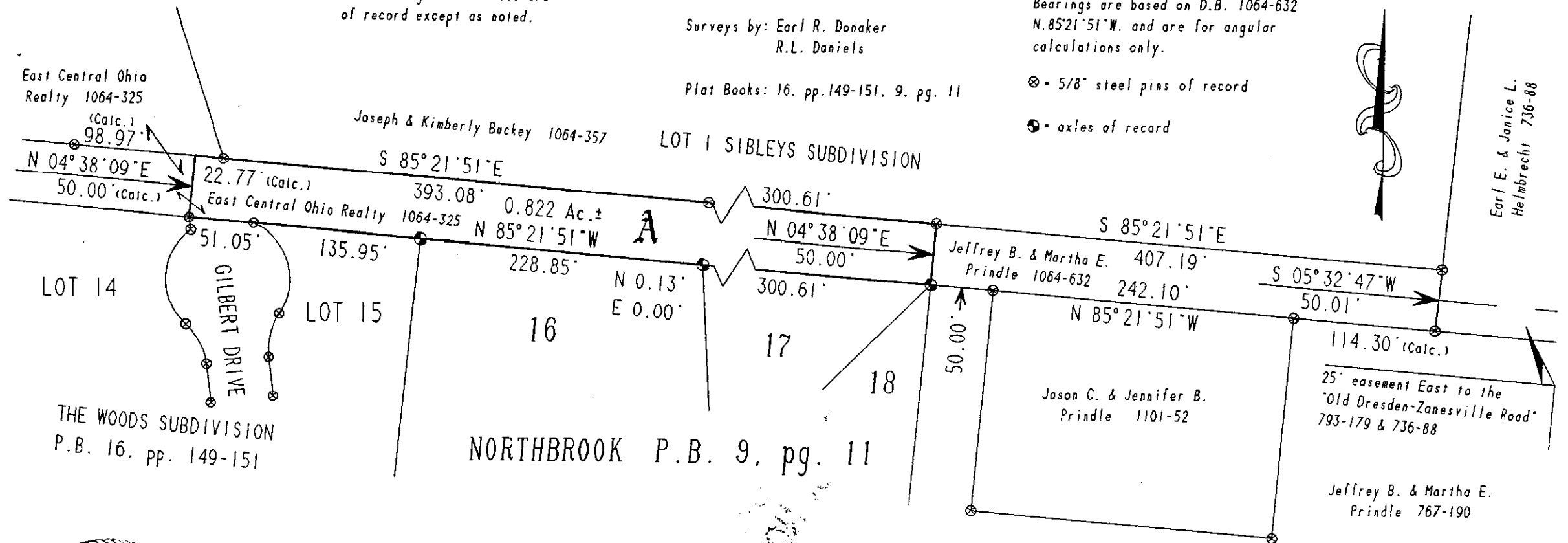
Bearings are based on D.B. 1064-632  
N. 85° 21' 51" W. and are for angular  
calculations only.

⊗ - 5/8" steel pins of record

☉ = axles of record

NOTE:

All bearings & distances are  
of record except as noted.



I, Earl R. Donaker, P. S. 7142, hereby  
certify this plat to be correct to  
the best of my knowledge and belief.

**A** East Central Ohio Realty to:  
Jeffrey B. & Martha E. Prindle  
Adjoiners: 0.822 Ac.±

DESCRIPTION APPROVED  
FOR AUDITORS TRANSFER



5-16-96

17-21-01-62 (PT)

*"Remove not the old landmark." Proverbs 23:10*

EAST CENTRAL OHIO REALTY  
0.822 ACRES±  
LOT 1 SIBLEYS SUBDIVISION  
TOWNSHIP 1 N. RANGE 8 W.  
UNITED STATES MILITARY LANDS  
TOWNSHIP: FALLS  
COUNTY: MUSKINGUM. OHIO  
DATE: MAY. 1996