

**CANNON LAND SURVEYING
7945 TWP. RD. 114 NE
NEW LEXINGTON, OHIO 43764**

Situated in the State of Ohio, County of Muskingum, Township of Harrison, T- 12, R- 12, being a part of Donald & Angela Crali Vol. 1913 Pg. 539, being a part of Sections 7 & 18, and more particularly described as follows:

Beginning at a stone at the Southeast Corner of Section 7; thence South 01 Degrees 58 Minutes 31 Seconds East 1346.10 feet to an iron pin found; thence North 89 Degrees 29 Minutes 27 Seconds West 1297.55 feet to an iron pin found; thence North 03 Degrees 22 Minutes 08 Seconds West 1332.66 feet to a stone on the North Line of Section 18; thence North 01 Degrees 15 Minutes 07 Seconds East 2669.70 feet to an iron pin found; thence South 89 Degrees 55 Minutes 44 Seconds East 1288.96 feet to an iron pin found; thence South 00 Degrees 23 Minutes 04 Seconds West 2664.11 feet to the place of beginning, containing 80.14 acres in Section 7 & 40.33 acres in Section 7, being 120.47 acres total, more or less, subject to all legal highways and easements.

Also the following 20' easement for ingress & egress, whose centerline is described as follows:

Beginning at a stone at the Southeast Corner of Section 7; thence South 01 Degrees 58 Minutes 31 Seconds East 345.22 feet to a point in the centerline of an existing dirt road and the place of beginning; thence along said centerline the next 32 courses to points: North 77 Degrees 21 Minutes 05 Seconds East 241.13 feet; thence South 88 Degrees 11 Minutes 01 Seconds East 85.91 feet; thence South 61 Degrees 44 Minutes 23 Seconds East 250.89 feet; thence South 72 Degrees 25 Minutes 39 Seconds East 368.51 feet; thence South 68 Degrees 25 Minutes 58 Seconds East 123.32 feet; thence South 58 Degrees 22 Minutes 24 Seconds East 99.13 feet; thence North 70 Degrees 50 Minutes 50 Seconds East 98.39 feet; thence North 19 Degrees 44 Minutes 28 Seconds East 175.89 feet; thence North 41 Degrees 15 Minutes 30 Seconds East 66.12 feet; thence North 72 Degrees 53 Minutes 13 Seconds East 122.33 feet; thence North 73 Degrees 52 Minutes 39 Seconds East 239.24 feet; thence South 74 Degrees 25 Minutes 05 Seconds East 51.17 feet; thence South 30 Degrees 14 Minutes 41 Seconds East 80.37 feet; thence South 16 Degrees 55 Minutes 46 Seconds East 140.53 feet; thence South 53 Degrees 01 Minutes 35 Seconds East 95.09 feet; thence South 59 Degrees 32 Minutes 10 Seconds East 174.89 feet; thence South 39 Degrees 20 Minutes 22 Seconds East 61.32 feet; thence South 09 Degrees 00 Minutes 32 Seconds East 85.47 feet; thence South 35 Degrees 25 Minutes 24 Seconds East 127.60 feet; thence South 51 Degrees 24 Minutes 51 Seconds East 86.72 feet; thence South 77 Degrees 11 Minutes 57 Seconds East 69.75 feet; thence North 83 Degrees 35 Minutes 14 Seconds East 52.77 feet; thence North 60 Degrees 40 Minutes 50 Seconds East 59.53 feet; thence North 32 Degrees 57 Minutes 24 Seconds East 47.48 feet; thence North 21 Degrees 11 Minutes 03 Seconds East 96.58 feet; thence North 09 Degrees 22 Minutes 36 Seconds East 79.53 feet; thence North 31 Degrees 14 Minutes 09 Seconds East 177.10 feet; thence North 55 Degrees 52 minutes 22 Seconds East 65.12 feet; thence South 87 Degrees 17 Minutes 46 Seconds East 158.98 feet; thence North 88 Degrees 49 Minutes 43 Seconds East 802.55 feet; thence South 86 Degrees 20 Minutes 53 Seconds East 163.07 feet; thence North 88 Degrees 51 Minutes 00 Seconds East 595.81 feet to a point in the centerline of Co. Rd. 6.

See plat attached.

Iron pins set are 5/8 inch rebar 30 inches long, with plastic ID caps.

Bearings are based on the East Line of Section 3 as being South 00 Degrees 23 Minutes 04 Seconds West.

This description was written from a survey made by Kevin Cannon PS 7224, November 1, 2007.

Parcel # All of 20-40-08-12-000 & 20-60-18-01-000

**OFFICE COPY
NOT RECORDABLE**
REG. NO. 7224

11/01/07
DATE

APPROVED FOR CLOSURE

A. L. B. 11/26/07

EXEMPT FROM
PLANNING COMMISSION

A. L. B. 11/26/07



CANNON LAND SURVEYING

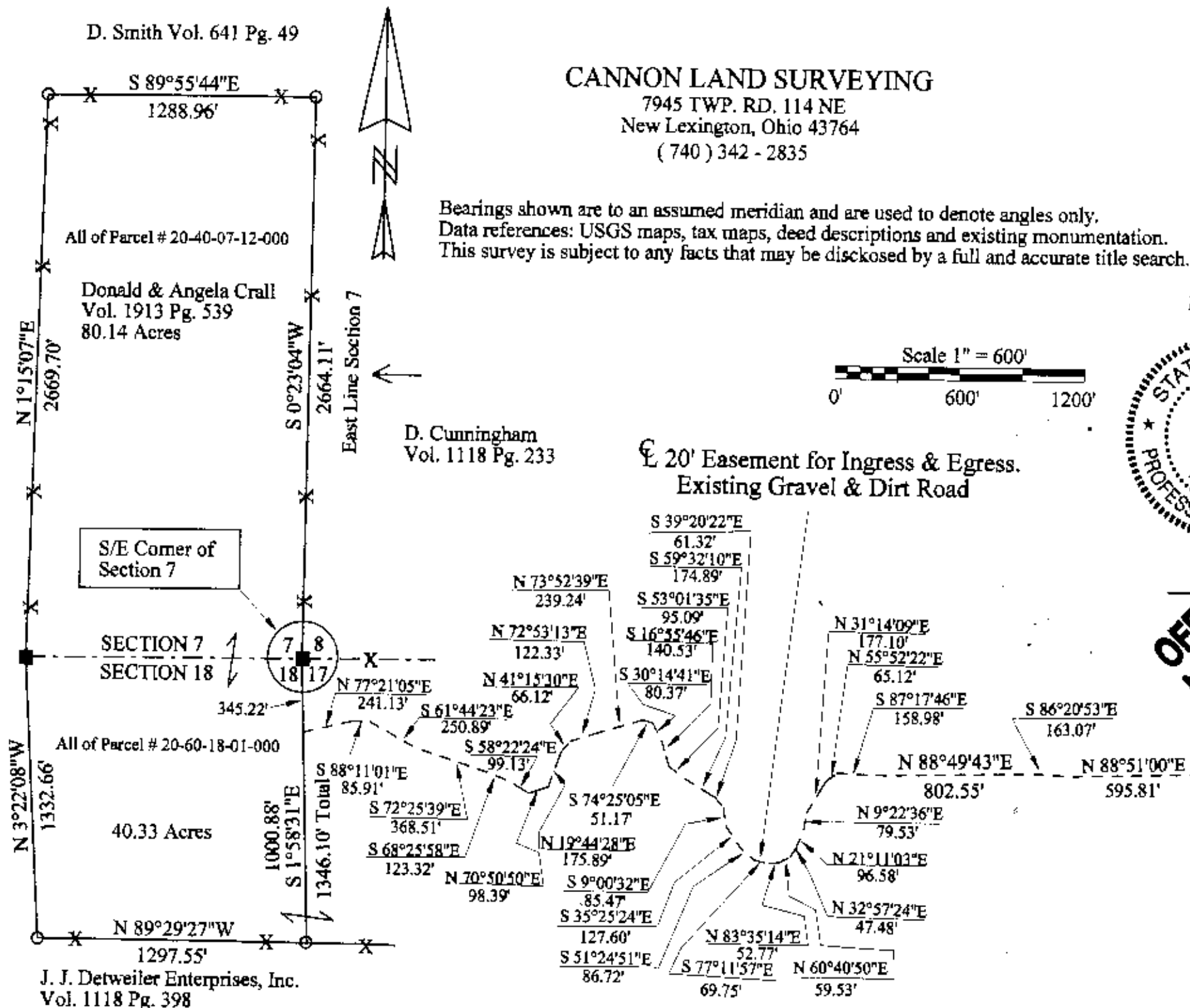
7945 TWP. RD. 114 NE
New Lexington, Ohio 43764
(740) 342-2835

Bearings shown are to an assumed meridian and are used to denote angles only.
Data references: USGS maps, tax maps, deed descriptions and existing monumentation.
This survey is subject to any facts that may be disclosed by a full and accurate title search.

Survey for: Don & Angela Crall
State: Ohio
County: Muskingum
Township: Harrison
T - 12, R - 12, Lot: N/A
Section: 7 & 18
City or Village: N/A
Subdivision: N/A

Parcel #: All of 20-60-18-01-000 & 20-40-07-12-000

R. Moore Vol. 1038 Pg. 511



Scale 1" = 600'



APPROVED FOR CLOSURE

[Signature]

EXEMPT FROM PLANNING COMMISSION

[Signature]

Date

Legend

- Iron Pin Set 5/8" Rebar with Plastic ID Cap Stamped CLS 722
- Iron Pin Found
- ▲ Railroad Spike Set
- △ Railroad Spike Found
- Stone Found
- ⊗ Post
- ✕ Fence
- Basis of Bearings