

Baseline Surveying, Inc.

Land Surveying and Construction Layout

3010 East Pike
Zanesville, OH 43701

Email: bei@rrohio.com
Telephone (740) 453-4850

10. SOUTH 25 DEGREES 16 MINUTES 20 SECONDS EAST 37.97 FEET TO A POINT;
11. SOUTH 26 DEGREES 11 MINUTES 00 SECONDS EAST 159.47 FEET TO A POINT;
12. SOUTH 27 DEGREES 16 MINUTES 40 SECONDS EAST 75.95 FEET TO A POINT;
13. SOUTH 28 DEGREES 32 MINUTES 10 SECONDS EAST 88.90 FEET TO A POINT;
14. SOUTH 30 DEGREES 39 MINUTES 45 SECONDS EAST 96.74 FEET TO A POINT;
15. SOUTH 33 DEGREES 19 MINUTES 55 SECONDS EAST 232.64 FEET TO A POINT;
16. SOUTH 32 DEGREES 40 MINUTES 55 SECONDS EAST 98.67 FEET TO A POINT;
17. WITH A CURVE TO THE RIGHT HAVING A RADIUS OF 365.69 FEET, A CHORD BEARING OF SOUTH 22 DEGREES 47 MINUTES 20 SECONDS EAST 126.24 FEET, AN ARC DISTANCE OF 126.88 FEET, AND A DELTA ANGLE OF 19 DEGREES 52 MINUTES 43 SECONDS TO A POINT, SAID POINT BEING NORTH 87 DEGREES 44 MINUTES 23 SECONDS WEST 32.22 FEET FROM AN EXISTING IRON PIN (5/8 INCH REBAR-SPILKER CAP);

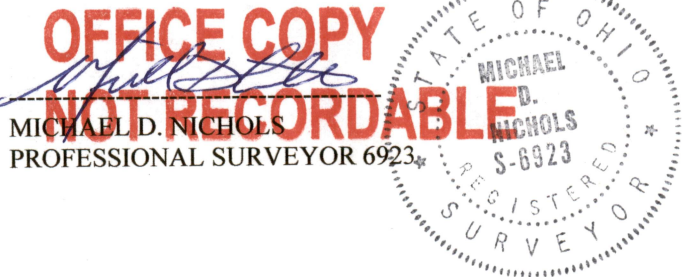
THENCE LEAVING THE ROAD AND WITH THE SOUTH LINE OF THE ABOVE SAID NORTHWEST QUARTER OF SECTION 8, NORTH 87 DEGREES 44 MINUTES 23 SECONDS WEST 1094.16 FEET TO THE **PLACE OF BEGINNING**, PASSING AN IRON PIN SET AT 407.10 FEET.

CONTAINING 27.766 ACRES. SUBJECT TO ALL LEGAL ROAD RIGHT OF WAYS AND ALL OTHER APPLICABLE EASEMENTS.

ALL IRON PINS SET ARE 5/8 INCH X 30 INCH REBAR WITH PLASTIC IDENTIFICATION CAPS (BASELINE PS6923-PS8536).

BEARINGS ARE BASED ON OHIO STATE PLANE COORDINATE SYSTEM 1983 (2011), OHIO SOUTH ZONE, GRID, DERIVED FROM A GPS OBSERVATION.

I, MICHAEL D. NICHOLS, PS 6923, HEREBY CERTIFY TO THE BEST OF MY KNOWLEDGE AND BELIEF THE SURVEY AND DESCRIPTION TO BE CORRECT AS PREPARED BY ME, THIS 11TH DAY OF NOVEMBER 2020, FROM A FIELD SURVEY COMPLETED BY ME ON THE 6TH DAY OF NOVEMBER 2020.



DESCRIPTION

APPROVED

By: Michael Nichols 11/19/2020