

TRACT # 1

DESCRIPTION OF AN 8.771 ACRE TRACT

Situate in the State of Ohio, County of Muskingum, Township of Hopewell, and being part of the Northwest Quarter of Section # 15, in the Second Quarter of Township 1 North, Range 9 West in the United States Military District and being part of the Daniel and Cheryl Mapes property recorded in Volume # 1153, Page 798, and part of Parcel # 25-24-15-07-002, of Muskingum County records and being more particularly described as follows ;

Beginning for Reference at the Northeast corner of the Northwest Quarter of Section # 15, in the Second Quarter Township, Township 1 North, Range 9 West, thence North 89 degrees 55 minutes 52 seconds East 391.70 feet to a point ; thence South 00 degrees 56 minutes 27 seconds West 1058.40 feet to a point in Mt. Olive Road (Twp.Rd. # 122) ; thence along the centerline of said road North 64 degrees 15 minutes 04 seconds West 12.20 feet to a point ; thence continuing along said road on the arc of a curve to the left 234.21 feet to a point, said curve having a radius of 536.04 feet and a chord which bears North 76 degrees 51 minutes 20 seconds West 232.35 feet ; thence continuing along said road North 89 degrees 00 minutes 03 seconds West 78.30 feet to a point ; thence continuing along said road South 86 degrees 08 minutes 51 seconds West 90.03 feet to a point ; thence continuing along said road South 82 degrees 18 minutes 15 seconds West 271.03 feet to a point ; thence continuing along said road South 79 degrees 19 minutes 30 seconds West 64.85 feet to a point ; thence continuing along said road South 66 degrees 10 minutes 43 seconds West 43.98 feet to a point ; thence continuing along said road South 42 degrees 56 minutes 23 seconds West 49.89 feet to a point ; thence continuing along said road South 23 degrees 48 minutes 44 seconds West 49.88 feet to a point ; thence continuing along said road South 21 degrees 15 minutes 04 seconds West 45.18 feet to a point ; thence continuing along said road South 24 degrees 26 minutes 14 seconds West 51.64 feet to a point ; thence continuing along said road South 32 degrees 53 minutes 55 seconds West 49.09 feet to a point ; thence continuing along said road South 40 degrees 00 minutes 54 seconds West 40.00 feet to a point ; thence continuing along said road South 40 degrees 00 minutes 54 seconds ~~East~~ 6.44 feet to a point ; thence continuing along said road South 48 degrees 27 minutes 22 seconds West 60.61 feet to a point ; thence continuing along said road South 52 degrees 55 minutes 05 seconds West 75.74 feet to a point ; thence continuing along said road South 54 degrees 52 minutes 43 seconds West 91.03 feet to a point ; thence continuing along said road South 57 degrees 31 minutes 42 seconds West 44.83 feet to a point and the True Place of Beginning ; thence along a new line crossing Daniel and Cheryl Mapes property , South 14 degrees 05 minutes 26 seconds East 100.89 feet to an iron pin set , passing an iron pin set at 28.27 feet ; thence along a new line , South 15 degrees 53 minutes 25 seconds West 111.50 feet to an iron pin set ; thence along a new line , South 08 degrees 58 minutes 18 seconds East 129.32 feet to an iron pin set ; thence along a new line South 26 degrees 53 minutes 30 seconds East 107.96 feet to an iron pin set ; thence along a new line , South 27 degrees 39 minutes 24 seconds East 184.31 feet to an iron pin set ; thence along a new line South 33 degrees 59 minutes 00 seconds East 161.60 feet to an iron pin set ; thence along a new line South 35 degrees 07 minutes 34 seconds East 128.77 feet to an iron pin set ; thence along a new line South 41 degrees 14 minutes 44 seconds East 204.98 feet to an iron pin set ; thence along a new line South 29 degrees 16 minutes 46 seconds East 82.78 feet to an iron pin set ; thence along a new line , South 26 degrees 14 minutes 58 seconds East 64.13 feet to an iron pin set ; thence along a new line South 12 degrees 16 minutes 32 seconds East 79.88 feet to an iron pin found (#5 rebar) ; thence along Kenneth P. and Kermit E. McKenzie property (Vol. 1000, Pg. 306) , South 89 degrees 50 minutes 56 seconds West 665.57 feet to an iron pin found (3/4" pipe) ; thence leaving said line along Carl Gerald and Nancy E. Fisher property (Vol. 854, Pg. 171), North 01 degrees 01 minutes 48 seconds East 1124.65 feet to a point in the centerline of Mt. Olive Road (Twp.Rd. # 122) , passing an iron pin found at 1094.65 feet ; thence along said road and Kenneth P. and Kermit E. McKenzie property (Vol. 1023, Pg. 305) North 57 degrees 31 minutes 42 seconds East 132.02 feet to a point at the True Place of Beginning .

Containing 8.771 acres , more or less, subject to all easements , restrictions , or right of ways , either written or implied. All iron pins set and found are # 5 rebar 30 inches long with a yellow I.D. cap labeled "BINCKLEY S - 7879" .

Bearings on this description are assumed on the west line of a 20.000 acre tract which was surveyed by W.J. Biedenbach and recorded in Deed Volume 1153, Pg. 798 of Muskingum County records as being North 01 degrees 01 minutes 48 seconds East and are for angular calculation only.

This description is based on an actual survey completed by Binckley Land Surveying in April, 2003.

OFFICE COPY
NOT RECORDABLE
Donald H. Binckley II P.S. 7878 Date

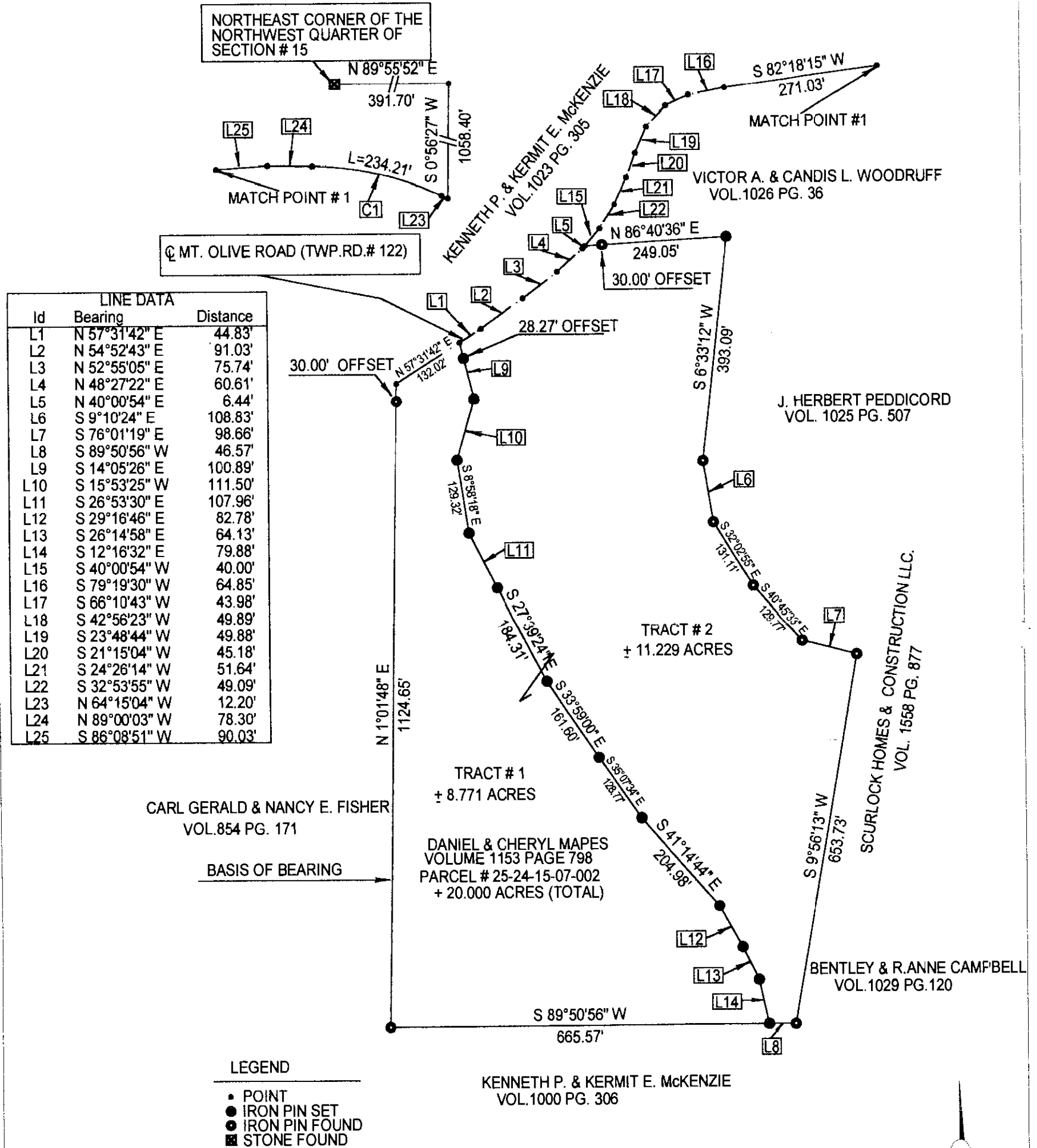
DESCRIPTION APPROVED
FOR AUDITOR'S TRANSFER
BY PSB

5-9-2003

BINCKLEY LAND SURVEYING

6375 WINDSONG WAY NASHPORT, OHIO 43830
PHONE (740) 455-3736 FAX (740)455-9149

SITUATE IN THE STATE OF OHIO, COUNTY OF MUSKINGUM, TOWNSHIP OF HOPEWELL, AND BEING PART OF THE NORTHWEST QUARTER OF SECTION # 15, IN THE SECOND QUARTER TOWNSHIP, TOWNSHIP 1 NORTH, RANGE 9 WEST AND BEING PART OF PARCEL # 25-24-15-07-002, WHICH WAS LAST CONVEYED TO DANIEL & CHERYL MAPES IN VOL. 1153, PAGE 798 OF MUSKINGUM COUNTY RECORDS.



DESCRIPTION APPROVED
FOR AUDITOR'S TRANSFER
BY *[Signature]*
5-9-2003

NOTE : IRON PINS SET DENOTED ON THIS PLAT ARE A #5 REBAR 30 INCHES LONG WITH A YELLOW IDENTIFICATION CAP LABELED "BINCKLEY" P.S. 7879.
BASIS OF BEARING: BEARINGS ARE BASED ON A PREVIOUS SURVEY BY W.J. BIEDENBACH DATED 5-26-1989 OF A 20.000 ACRE TRACT AND ARE ASSUMED ON THE WEST LINE AS BEING N 01°01'48" E AND ARE FOR ANGULAR CALCULATION ONLY.
REFERENCES : TAX MAPS, DEEDS OF RECORD, AND A PREVIOUS SURVEY BY W.J. BIEDENBACH DATED 5-26-1989.
I HEREBY CERTIFY THIS PLAT TO BE CORRECT TO THE BEST OF MY KNOWLEDGE AND BELIEF, AND REPRESENTS AN ACTUAL SURVEY COMPLETED BY BINCKLEY LAND SURVEYING IN APRIL, 2003.

DONALD E. BINCKLEY II P.S. # 7879 DATE

