

25-40-41-18-003 A

SITUATED IN

The State of Ohio, County of Muskingum
Township of Hopewell, and being a part
of Lots 1 & 2 of Township 1, Range 9.

BASIS OF BEARING

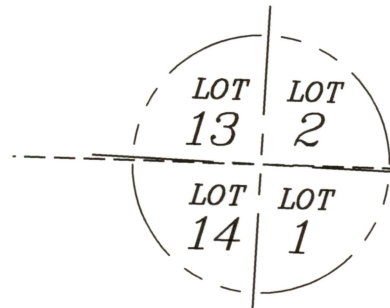
Bearings and distances are based on State Plane Grid Coordinates,
NAD83, Ohio South, per GPS Observation.

Split to Adjoin

REFERENCES

* As Noted on Plat
www.muskingumcountyauditor.org
www.mceo.org
<http://recorder.muskingumcounty.org>

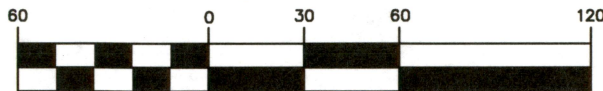
Previous Surveys by:
Darkness Job #1243 2002



LEGEND

- ▲ Railroad Spike Found
- △ Railroad Spike Set
- Iron Pin Found
- Pipe Found w/cap
- ⊠ Stone Found
- ⌵ Property Hook
- ⊙ Iron Pin Set
- Ex. Fence
- ⊗ Axle Found

Graphic Scale



(IN FEET)
1 inch = 60 ft.

DESCRIPTION

APPROVED

By: *[Signature]*

HOPEWELL NATIONAL ROAD (CR-415)

S 88°07'01" E
1524.48'

POB
(±0.115 ac. in R/W)

Part of: 25-40-41-18-002
J & M CONSTRUCTION, LLP
OR 2543-399
±0.494 Ac.

J & M CONSTRUCTION, LLP
OR 2543-399

WILLIAM HENRY & SANDRA K. LUBURGH
OR 2857-525

JESSE MARTIN & AMY MARTIN
OR 2230-228

APPROVED
MUSKINGUM COUNTY
PLANNING COMMISSION DIRECTOR

Fee Paid

Date



OFFICE COPY
NOT RECORDABLE
Date: 11/10/20
Brian Kelly McPeck
Reg. Surveyor No. 8517

ADJOINER STATEMENT

Not to be used as a separate building
site or transferred as an independent
parcel in the future without planning
commission approval in accordance with
applicable subdivision regulations.



www.mcpeeklandsurveying.com
email: brian@mcpeeklandsurveying.com
340 Robin Hood Ln., * Zanesville, Oh 43701 * 740.704.6073