

Lee Surveying and Mapping Co., Inc.

Land Surveys • Topography • Subdivisions • Construction Layout

117 N. Madriver St.
Bellefontaine OH 43311



Phone: (937) 593-7335
Fax: (937) 593-7444
surveys@lsminc.us

HILL, TRUSTEES 2.791 ACRES

Lying in the northwest quarter of Section 6, Quarter Township 2,
Township 18, Range 15, Hopewell Township, Muskingum County, Ohio.

Being out of the Ellis R. Hill or Phyllis M. Hill, Trustees, original 15.47
acre tract as deeded and described in Deed Volume 2066, Page 592 (Auditor's
Parcel No. 25-25-60-05-01-000) of the Muskingum County Records of Deeds
and being more particularly described as follows:

Commencing at the northwest corner of Section 6.

THENCE, with the west line of Section 6 and Muskingum County,
S 04°-50'-00"W, a distance of 1172.10 feet to a point on the center-line of
Township Road 30 (North Pike, formerly known as Old National Road).

THENCE, with the center-line of Township Road 30, the following three
courses:

N 77°-00'-00"E, a distance of 76.36 feet to a point.

N 76°-54'-10"E, a distance of 1125.61 feet to a point.

N 77°-02'-20"E, a distance of 967.40 feet to a MAG nail set at the TRUE POINT
OF BEGINNING.

THENCE, with the center-line of Township Road 30 (80 feet wide),
N 77°-02'-20"E, a distance of 251.97 feet to a MAG nail set.

THENCE, S 05°-45'-00"E, a distance of 337.70 feet to a 5/8 inch iron rod
set, passing a 5/8 inch iron rod found at 40.32 feet.

THENCE, N 83°-26'-00"E, a distance of 110.00 feet to a 5/8 inch iron rod
set.

THENCE, S 05°-45'-00"E, a distance of 113.00 feet to a MAG nail set on
the center-line of U.S. Route 40 (formerly known as Ohio Route 440), passing a
5/8 inch iron rod set at 52.96 feet.

THENCE, with the center-line of U.S. Route 40 (variable widths),
S 83°-26'-00"W, a distance of 360.00 feet to a MAG nail set.

Lee Surveying and Mapping Co., Inc.

Land Surveys • Topography • Subdivisions • Construction Layout

117 N. Madriver St.
Bellefontaine OH 43311



Phone: (937) 593-7335
Fax: (937) 593-7444
surveys@lsminc.us

THENCE, N 05°-45'-00"W, a distance of 422.63 feet to the point of beginning, passing 5/8 inch iron rods set at 65.17 feet and 382.31 feet.

Containing 2.791 acres, of which 0.748 acre is within the highway rights-of-way.

Property is subject to any and all previous easements and rights-of-way of record.

The right-of-way of the above mentioned Township Road 30 is described as follows:

Beginning on a MAG nail set at the true point of beginning of the above described parcel.

THENCE, with the center-line of Township Road 30 (80 feet wide), N 77°-02'-20"E, a distance of 251.97 feet to a MAG nail set.

THENCE, S 05°-45'-00"E, a distance of 40.32 feet to a 5/8 inch iron rod found on the south right-of-way of Township Road 30.

THENCE, with the south right-of-way of Township Road 30, S 77°-02'-20"W, a distance of 251.86 feet to a 5/8 inch iron rod set.

THENCE, N 05°-45'-00"W, a distance of 40.32 feet to the point of beginning.

Containing 0.231 acre.

The right-of-way of the above mentioned U.S. Route 40 is described as follows:

Beginning at a MAG nail set at the southeast corner of the above described parcel.

THENCE, with the center-line of U.S. Route 40 (variable widths), S 83°-26'-00"W, a distance of 360.00 feet to a MAG nail set.

THENCE, N 05°-45'-00"W, a distance of 65.17 feet to a 5/8 inch iron rod set on the north right-of-way of U.S. Route 40.

Lee Surveying and Mapping Co., Inc.

Land Surveys • Topography • Subdivisions • Construction Layout

117 N. Madriver St.
Bellefontaine OH 43311



Phone: (937) 593-7335
Fax: (937) 593-7444
surveys@lsminc.us

THENCE, with the north right-of-way of U.S. Route 40, N 84°-15'-00"E, a distance of 359.96 feet to a 5/8 inch iron rod set, passing a 5/8 inch iron rod found at 249.97

THENCE, S 05°-45'-00"E, a distance of 60.04 feet to the point of beginning.

Containing 0.517 acre.

The basis for bearings is the center-line of U.S. Route 40, being S 83°-26'-00"W, and all other bearings are from angles and distances measured in a field survey by Lee Surveying and Mapping Co., Inc. on July 5, 2012.



Description prepared by:

**OFFICE COPY
NOT RECORDABLE**
William K. Bruce
Professional Surveyor 7437
July 5, 2012

53540612

DESCRIPTION
APPROVED

By:

[Signature] 7/9/2012



8/31/12
Date

Fee Paid

Lee Surveying and Mapping Co., Inc.

Land Surveys • Topography • Subdivisions • Construction Layout

117 N. Madriver St.
Bellefontaine OH 43311



Phone: (937) 593-7335
Fax: (937) 593-7444
surveys@lsminc.us

HILL, TRUSTEES INGRESS/EGRESS EASEMENT

Lying in the northwest quarter of Section 6, Quarter Township 2,
Township 18, Range 15, Hopewell Township, Muskingum County, Ohio.

Being an ingress/egress easement over a portion of the Ellis R. Hill or
Phyllis M. Hill, Trustees, original 15.47 acre tract as deeded and described in
Deed Volume 2066, Page 592 (Auditor's Parcel No. 25-25-60-05-01-000) of the
Muskingum County Records of Deeds and being more particularly described as
follows:

Commencing at the northwest corner of Section 6.

THENCE, with the west line of Section 6 and Muskingum County,
S 04°-50'-00"W, a distance of 1172.10 feet to a point on the center-line of
Township Road 30 (North Pike, formerly known as Old National Road).

THENCE, with the center-line of Township Road 30, the following three
courses:

N 77°-00'-00"E, a distance of 76.36 feet to a point.

N 76°-54'-10"E, a distance of 1125.61 feet to a point.

N 77°-02'-20"E, a distance of 1219.37 feet to a MAG nail set.

THENCE, S 05°-45'-00"E, a distance of 337.70 feet to a 5/8 inch iron rod
set at the TRUE POINT OF BEGINNING, passing a 5/8 inch iron rod found at
40.32 feet.

THENCE, N 83°-26'-00"E, a distance of 110.00 feet to a 5/8 inch iron rod
set.

THENCE, S 05°-45'-00"E, a distance of 52.96 feet to a 5/8 inch iron rod
set on the north right-of-way of U.S. Route 40.

THENCE, with the north right-of-way of U.S. Route 40, S 84°-15'-00"W, a
distance of 109.99 feet to a 5/8 inch iron rod found.

MEMBER: AMERICAN CONGRESS ON SURVEYING & MAPPING (ACSM) • NATIONAL SOCIETY OF PROFESSIONAL SURVEYORS (NSPS)
PROFESSIONAL LAND SURVEYORS OF OHIO (PLSO)

Lee Surveying and Mapping Co., Inc.

Land Surveys • Topography • Subdivisions • Construction Layout

117 N. Madriver St.
Bellefontaine OH 43311



Phone: (937) 593-7335
Fax: (937) 593-7444
surveys@lsminc.us

THENCE, N 05°-45'-00"W, a distance of 51.39 feet to the point of beginning.

Containing 0.132 acre.

Property is subject to any and all previous easements and rights-of-way of record.

The basis for bearings is the center-line of U.S. Route 40, being S 83°-26'-00"W, and all other bearings are from angles and distances measured in a field survey by Lee Surveying and Mapping Co., Inc. on July 5, 2012.

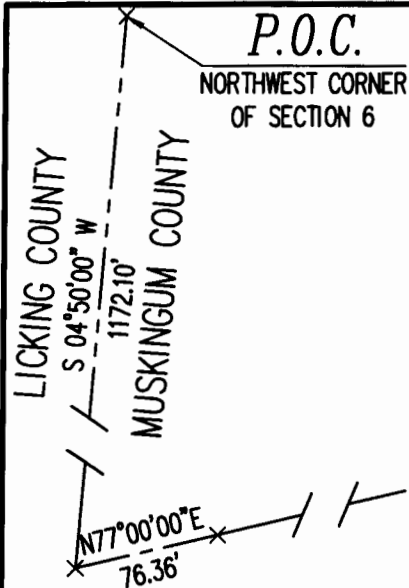


Description prepared by:

**OFFICE COPY
NOT RECORDABLE**

William K. Bruce
Professional Surveyor 7437
July 5, 2012

53540612



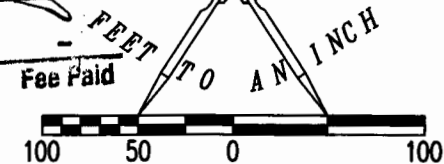
REFERENCES:

SURVEY OF 8.257 ACRES BY MARK J. EICHER, PS-8233.
 COUNTY TAX RECORDS
 O.D.O.T. RIGHT-OF-WAY MAPS
 EXISTING MONUMENTATION AS NOTED
 CURRENT DEEDS AS NOTED

NORTH PIKE (80') TOWNSHIP ROAD 30
 (FORMERLY KNOWN AS OLD NATIONAL ROAD)

APPROVED
 MUSKINGUM COUNTY
 PLANNING COMMISSION

S C A L E
 100
 FEET
 TO AN INCH



LEGEND:

- × POINT
- MAG NAIL SET
- 5/8 INCH IRON ROD FOUND
- 5/8 INCH IRON ROD SET WITH PLASTIC I.D. CAP STAMPED "LSM 7437"

Approved For Transfer
 On Lot Sewage Proposed
 Date 8/30/12

Zanesville-Muskingum County
 Health Department

SURVEYED BY

**OFFICE COPY
 NOT RECORDABLE**

WILLIAM K. BRUCE
 PROFESSIONAL SURVEYOR 7437
 JULY 5, 2012

COPYRIGHT 2012 BY:
LEE SURVEYING & MAPPING CO., INC.
 117 North Madriver Street
 BELLEFONTAINE, OHIO 43311
 (937) 593-7335
 WWW.LSMINC.US
 surveys@lsminc.us

KSS D0612 53540612 L-5354-4

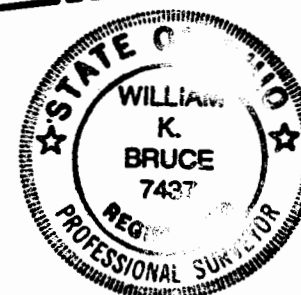
**SURVEY OF 2.791 ACRES OUT OF THE
 ELLIS R. HILL OR
 PHYLLIS M. HILL, TRUSTEES
 ORIGINAL 15.47 ACRE TRACT
 DEED VOLUME 2066, PAGE 592
 NORTHWEST QUARTER OF SECTION 6,
 QUARTER TOWNSHIP 2,
 TOWNSHIP 18, RANGE 15
 HOPEWELL TOWNSHIP
 MUSKINGUM COUNTY, OHIO**

2.791 ACRES
 OF WHICH 0.748 ACRE IS WITHIN
 THE HIGHWAY RIGHTS-OF-WAY

ELLIS R. HILL OR
 PHYLLIS M. HILL, TRUSTEES
 ORIGINAL 15.47 ACRES
 D.V. 2066, PG. 592
 PART OF PARCEL 25-60-05-01-000

ELLIS R. HILL OR
 PHYLLIS M. HILL, TRUSTEES
 ORIGINAL 15.47 ACRES
 D.V. 2066, PG. 592
 PARCEL 25-60-05-01-000

PROPOSED
 INGRESS/EGRESS
 EASEMENT
 (0.132 ACRE)



WEST PIKE (BASIS FOR BEARINGS)

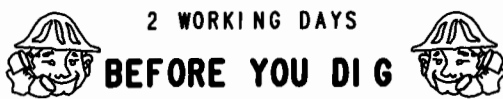
(VARIABLE WIDTHS)

DESCRIPTION

APPROVED
 By: [Signature] 7/9/2012

STA. 732+14.28

(FORMERLY KNOWN AS OHIO ROUTE 440)



CALL TOLL FREE **800-362-2764**

OHIO UTILITIES PROTECTION SERVICE.