



SURVEYING & MAPPING

L. Peter Dinan & Associates

27 South Sixth Street

P. O. Box 55, Zanesville, Ohio 43701

25-85-11-13-001
 8300 COOPERMILL RD

Description For Conveyance

3.39 Acres

Part Of Parcel #25-25-85-11-13-000

Being a part of the South East Quarter of Section 11,
 Township 18, Range 15, Hopewell Township, Muskingum County,
 Ohio and being further described as follows:

Commencing at an existing stone marking the Southwest Corner
 of the Southeast Quarter of Section 11; thence North 01 degrees
 02 minutes 20 seconds West 787.00 feet to a point marked by
 a 3/4 inch iron pin; thence North 01 degree 02 minutes 20 seconds
 West 41.19 feet to the center of County Road number 71
 (Coopermill Road); thence along the center of said County Road
 the next thirteen courses and distances:

- 1) North 24 degrees 23 minutes 01 seconds East 52.60 feet
to a point;
- 2) North 19 degrees 02 minutes 51 seconds East 87.69 feet
to a point and the true place of beginning of the premises
herein intended to be described;
- 3) North 19 degrees 02 minutes 51 seconds East 62.22 feet
to a point;
- 4) North 26 degrees 52 minutes 57 seconds East 57.97 feet
to a point;
- 5) North 37 degrees 17 minutes 06 seconds East 64.37 feet
to a point;
- 6) North 44 degrees 16 minutes 57 seconds East 60.60 feet
to a point;
- 7) North 45 degrees 50 minutes 32 seconds East 52.54 feet
to a point;
- 8) North 47 degrees 47 minutes 37 seconds East 49.22 feet
to a point;
- 9) North 50 degrees 20 minutes 56 seconds East 53.84 feet
to a point;
- 10) North 54 degrees 16 minutes 48 seconds East 46.51 feet
to a point;
- 11) North 59 degrees 57 minutes 49 seconds East 50.37 feet
to a point;
- 12) North 71 degrees 26 minutes 33 seconds East 44.67 feet
to a point;
- 13) North 79 degrees 12 minutes 49 seconds East 34.31 feet
to a point; thence leaving the center of said County Road
number 71 South 1 degree 10 minutes 35 seconds East 381.08 feet
to an iron pin; thence South 39 degrees 42 minutes 53 seconds
West 284.49 feet to an iron pin; thence North 46 degrees 11
minutes 08 seconds West 314.44 feet to the true place of
beginning, containing three and thirty-nine hundredths (3.39)
acres more or less.

Subject to the easements of County Road #71.

This description written from a survey made by L. Peter
 Dinan, Registered Surveyor #5451, July 24, 1993.

DESCRIPTION APPROVED
 FOR AUDITOR'S TRANSFER

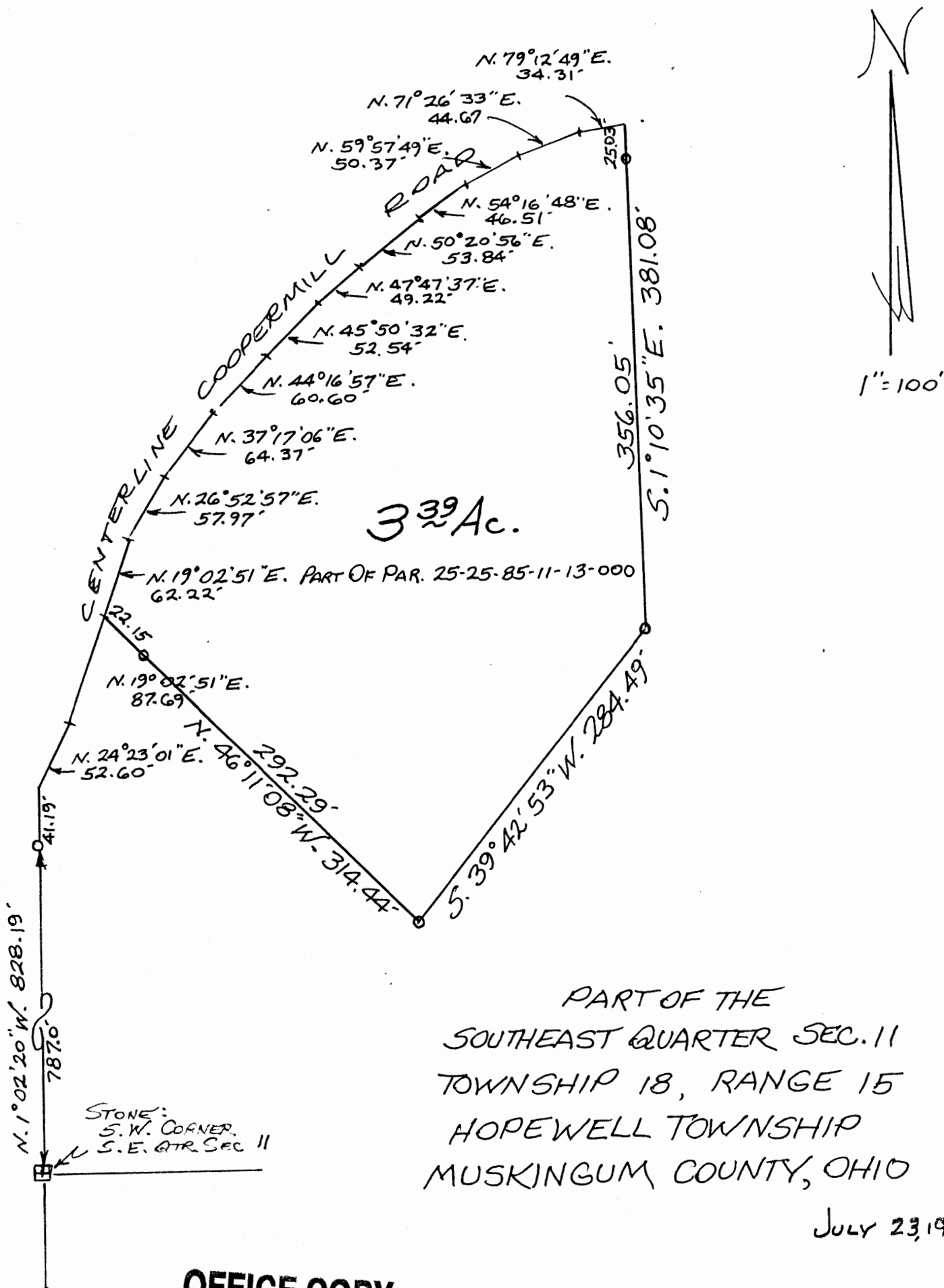
BY

A. P. Dinan
 7-26-93

**OFFICE COPY
 NOT RECORDABLE**



L. PETER DINAN & ASSOCIATES
27 SOUTH SIXTH STREET
ZANESVILLE, OHIO



OFFICE COPY
NOT RECORDABLE

DESCRIPTION APPROVED
FOR AUDITOR'S TRANSFER

BY A. L. Smith
7-26-93