



# LANDMARK SURVEYS, INC.



A DIVERSIFIED CORPORATION Land Surveying - Land Sales - Land Development - Excavating  
727 Cambridge Road, Coshocton, Ohio 43812: e-donaker@usa.net (740) 623-0993 800-842-3264 fax: (740) 623-0997

GEORGE J. LEWIS

18.342 Acres

GL105500

Being 18.342 acres, more or less (5.972 acres all of # 29-10-03-05-000 and 12.370 acres part of # 29-10-03-12-000) in the west half of section 3, in the first quarter of township 3 north, range 9 west, United States Military Lands, in the township of Jackson, in the county of Muskingum, in the State of Ohio, and more particularly described as follows:

Commencing at the northeast corner of the west half of section 3, thence, along the north & south quarterline, S.00°00'00"E. 2045.34' to a point;

thence, along the south line of a 25 acre tract of S.C. & M.B. Reiss, DB1088/448, the following 2 courses:

1. thence, N.88°15'00"W. 310.27' to a pin found;
2. thence, continuing N.88°15'00"W. 926.15' to a pin found, said pin found being the TRUE POINT OF BEGINNING;

thence, along the property line of P.N. II & L.A. Untied, DB1138/525 and S.C. & M.B. Reiss, DB975/79, S.25°32'02"E. 901.99' to a pin found;

thence, through the property of George J. Lewis, DB727/276 the following 2 courses:

1. thence, S.20°19'36"W. 114.11' to a 5/8" steel pin set;
2. thence, continuing S.20°19'36"W. 51.03' to a point in the centerline of the Wakatomika Creek;

thence, along the property line of P.H. Kilpatrick, DB994/51 and the centerline of the Wakatomika Creek the following 11 courses:

1. thence, N.82°05'48"W. 81.12' to a point;
2. thence, S.78°43'49"W. 127.98' to a point;
3. thence, S.79°59'22"W. 109.88' to a point;
4. thence, S.71°41'03"W. 96.54' to a point;
5. thence, S.66°47'08"W. 128.45' to a point;
6. thence, N.53°59'08"W. 147.69' to a point;
7. thence, N.70°52'07"W. 131.71' to a point;
8. thence, N.79°30'34"W. 96.93' to a point;
9. thence, S.80°51'07"W. 48.54' to a point;
10. thence, S.78°22'57"W. 96.60' to a point;
11. thence, S.83°03'55"W. 121.71' to a point;

thence, along the property line of R.C. & L. P. King, DB800/214 the following 3 courses:

1. thence, N.06°10'35"E. 64.72' to a 5/8" steel pin set;
2. thence, continuing N.06°10'35"E. 586.92' to a 5/8" steel pin set;
3. thence, continuing N.06°10'35"E. 19.41' to a point in the centerline of Ashcraft Road, TR93;

thence, along the property line of J.D. & T.J. Stepp, DB1139/836 the following 3 courses:

1. thence, along the centerline of Ashcraft Road, TR93, S.69°20'40"E. 367.45' to a point;
2. thence, N.18°43'22"E. 25.32' to a pin found;
3. thence, continuing N.18°43'22"E. 481.12' to a pin found;

thence, along the property line of R.C. & L. P. King, DB800/214, S.88°15'00"E. 26.90' to a point;

thence, along the property line of S.C. & M.B. Reiss, DB1088/448, the following 2 courses:

1. thence, S.01°15'00"W. 33.66' to a pin found;
2. thence, S.88°15'00"E. 190.26' to the TRUE POINT OF BEGINNING, containing 18.342 acres, more or less, including public road right-of-way and is subject to all easements, rights-of-way, or restrictions, whether recorded or implied.

Bearings are based on DB1139/836 N.18°43'22"E. and are for angular calculations only. All 5/8" steel pins set are 30" long with plastic cap marked "E.R.D. 7142".

Pertinent documents: tax maps; deeds: 994/51, 1134/624, 1138/525, 975/79, 1088/448, 800/214, 1139/836; surveys by: Kenneth C. Varner, Malcolm A. Grove.

Prior deed: DB727/276.

Description and plat by Landmark Surveys, Inc. Earl R. Donaker, Professional Surveyor, #7142, from a survey of the premises in the month of April, in the year of our LORD two thousand.

**OFFICE COPY  
NOT RECORDABLE**

DESCRIPTION APPROVED  
FOR AUDITOR'S TRANSFER  
BY A.L. Swinehart  
4-12-2000 KB

"Remove not the old landmark" Proverbs 23:10

727 Cambridge Road  
Coshocton, Ohio 43812  
THIS PROPERTY IS SUBJECT TO  
ALL EASEMENTS, RIGHTS-OF-WAY,  
OR RESTRICTIONS, WHETHER  
RECORDED OR IMPLIED.

# LANDMARK SURVEYS, INC.

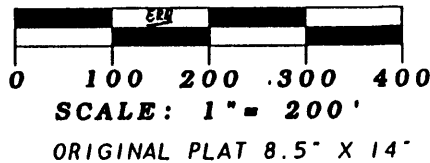
EARL R. DONAKER, P.S.

tel: (740) 623-0993  
1-800-842-3264

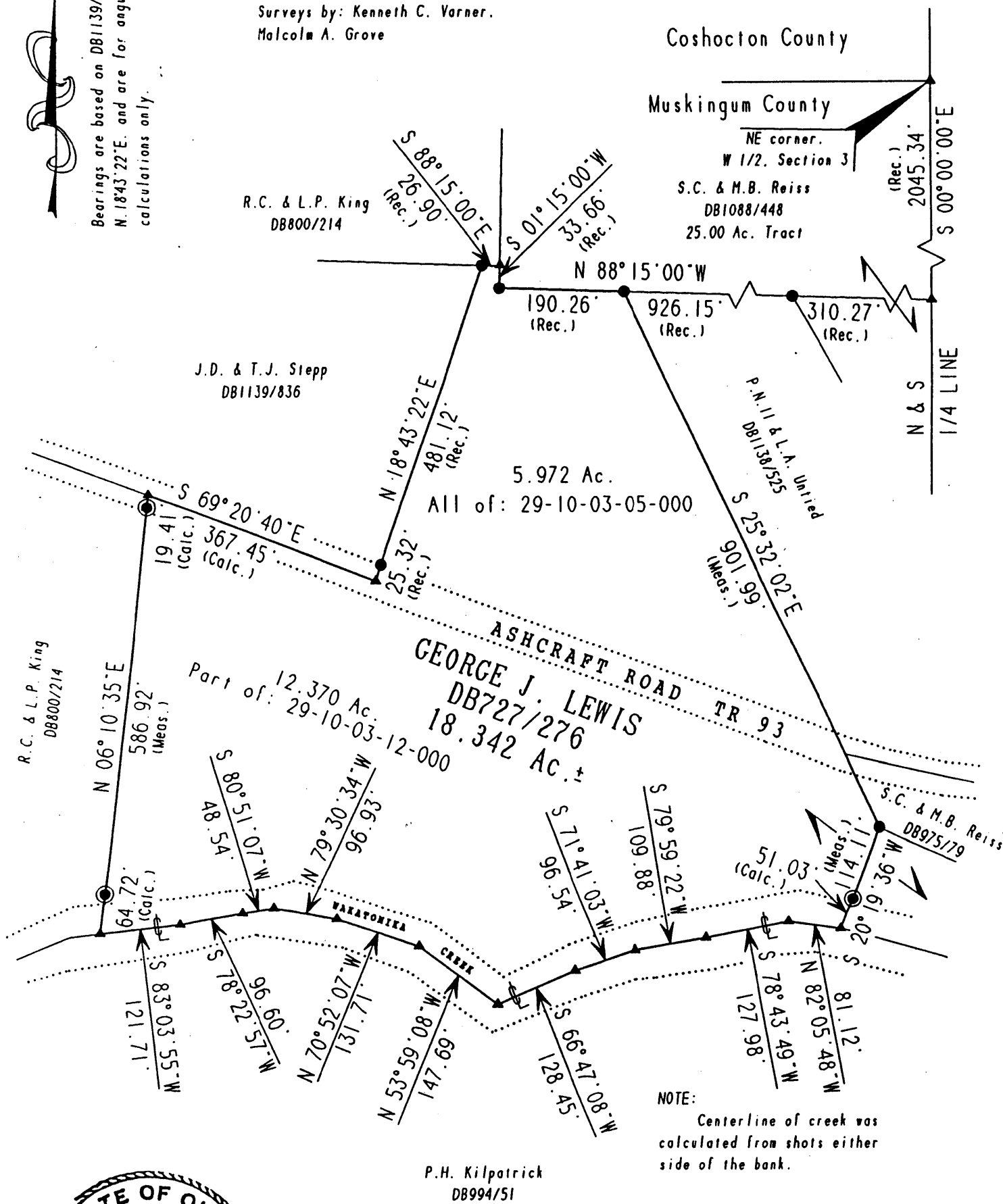
Pertinent documents: Tax maps:

Deeds: 994/51, 1134/624, 1138/525,  
975/79, 1088/448, 800/214, 1139/836

Surveys by: Kenneth C. Varner,  
Malcolm A. Grove



Bearings are based on DB1139/836  
N. 18° 43' 22" E. and are for angular  
calculations only.



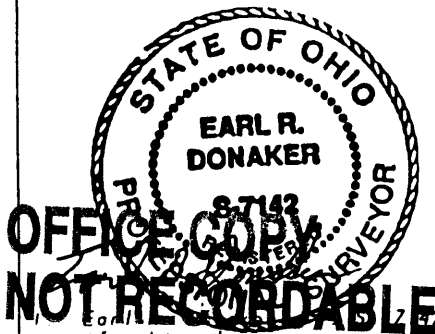
NOTE:  
Centerline of creek was  
calculated from shots either  
side of the bank.

P.H. Kilpatrick  
DB994/51

DESCRIPTION APPROVED  
FOR AUDITOR'S TRANSFER  
BY R. L. Swinehart  
4-12-2000 KH

- - All 5/8" steel pins set are 30" long, plastic cap marked "ERD 7142"
- - pin found
- ▲ - point

GEORGE J. LEWIS
ACRES: 18.342
W. 1/2, SECTION 3
FIRST QUARTER, T 3 N.R 9 W.
UNITED STATES MILITARY LANDS
TOWNSHIP: JACKSON
COUNTY: MUSKINGUM, OHIO
APRIL, 2000 GL105500



I, Earl R. Donaker, hereby  
certify this plot to represent a boundary  
survey pursuant to Chapter 4733-37, Ohio  
Administrative Code and to be correct to  
the best of my knowledge and belief.

"Remove not the old landmark." Proverbs 23:10