

ADDRESS N/A

29-40-13-11-002

ALAN DONAKER SURVEYING

Alan Donaker, P.S.

19849 TR 383

Walhonding, OH 43843

Phone: (740) 327-7001

Fax: (740) 327-6101

TRACT 2 (To be transferred to adjoiner)

Being 10.000 acres, more or less, in the Southwest Quarter of Section 13, Third Quarter, Township 3 North, Range 9 West, United States Military Lands, in the Township of Jackson, in the County of Muskingum, in the State of Ohio, conveyed to Carole O. Fraunfelter, OR 1883-509 (part), Parcel No. 29-40-13-11-000 (part), and more particularly described as follows:

Commencing at a stone found at the Northeast corner, of the Southeast Quarter, of Section 14:

thence, with the East line of Section 14, the following 2 courses:

1. thence, S. 03° 32' 44" W. a distance of 823.91' to a ¾" pipe found;
2. thence, S. 03° 32' 44" W. a distance of 93.11' to a point in Fairall Road, Township Road 318;

thence, with the property line of Viola Hardesty, DR 608-210, and in Fairall Road, Township Road 318, the following 5 courses:

1. thence, N. 86° 57' 37" E. a distance of 494.29' to a point;
2. thence, N. 86° 57' 37" E. a distance of 77.27' to a point;
3. thence, N. 77° 56' 37" E. a distance of 59.07' to a point;
4. thence, N. 77° 56' 37" E. a distance of 158.07' to a point;
5. thence, N. 63° 17' 37" E. a distance of 262.58' to a point;

thence, with the property line of Craig G. and Karen K. Johnson, DR 1066-493, the following 2 courses:

1. thence, S. 46° 48' 40" E. a distance of 27.16' to a ¾" pipe found (bent);
2. thence, S. 46° 48' 40" E. a distance of 614.21' to a 5/8" rebar set, said rebar being the TRUE POINT OF BEGINNING;

thence, continuing with the property line of Craig G. and Karen K. Johnson, DR 1066-493, S. 46° 48' 40" E. a distance of 179.88' to a ¾" pipe found;

thence, with the property line of Joseph A. Celuch, OR 1735-598, S. 03° 40' 00" W. a distance of 769.84' to a 5/8" rebar found;

thence, with the property line of Wayne and Carolyn Graham, OR 1152-723, N. 85° 57' 54" W. a distance of 610.58' to a 5/8" rebar set;

thence, through the property of Carole O. Fraunfelter, OR 1883-509, the following 3 courses:

1. thence, N. 00° 47' 09" W. a distance of 502.44' to a 5/8" rebar set;
2. thence, N. 71° 30' 33" E. a distance of 287.72' to a 5/8" rebar set;
3. thence, N. 45° 42' 42" E. a distance of 364.85' to the TRUE POINT OF BEGINNING, containing 10.000 acres, more or less, and is subject to all easements, rights-of-way, or restrictions, whether recorded or implied.

Bearings are based on DR 1066-493 and are for angular calculations only.

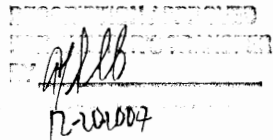
All 5/8" rebars set are 30" long with plastic cap marked "AMD 8050".

Pertinent Documents: Tax Map and all Deeds and Plats as shown

Surveys by: Earl R. Donaker, Charles R. Young, Stephen M. Bowman

Description and plat by Alan Donaker, Professional Surveyor, #8050, from a survey of the premises on December 13, in the year of our Lord Two Thousand Four.

**OFFICE COPY
NOT RECORDABLE**


12-20-04

This property is subject to all easements, rights-of-way or restrictions, whether recorded or implied.

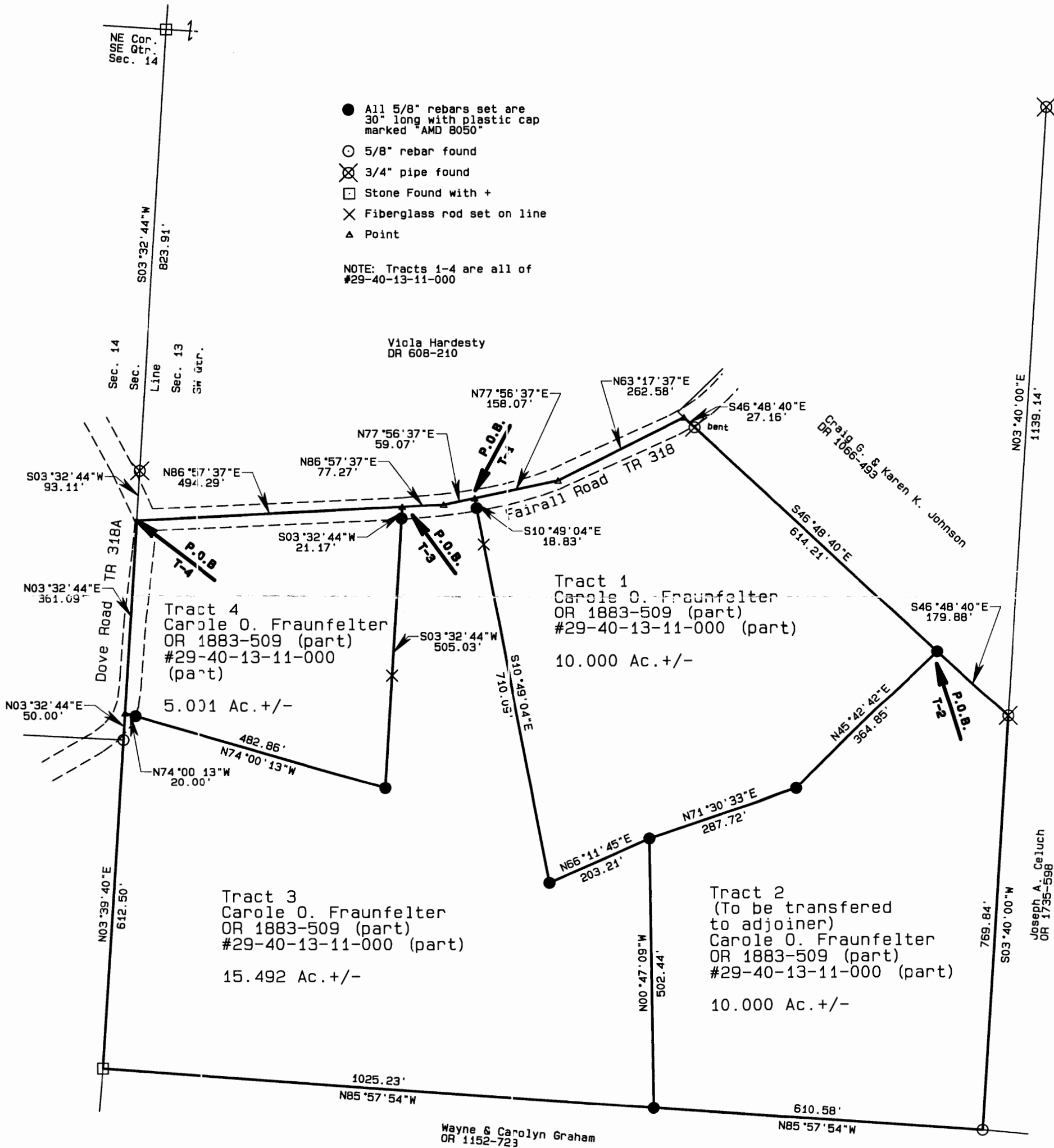
ALAN DONAKER SURVEYING
19849 TR 383
Walhonding, OH 43843
Telephone: (740) 327-7001
Fax: (740) 327-6101

Pertinent Documents: Tax Map
All Deeds and plats shown

Bearings are based on
DR 1066-493 and are for
angular calculations only

Surveys By: Earl R. Donaker
Charles R. Young, Stephen
M. Bowman

29-40-13-11-000
29-40-13-11-000 SNR
29-40-13-11-002
29-40-13-11-003



OFFICE COPY
NOT RECORDABLE

I, Alan Donaker, Professional Surveyor, do hereby certify this plat to represent a boundary survey pursuant to Chapter 4733.37 Ohio Administrative Code and to be correct to the best of my knowledge and belief.

GRAPHIC SCALE

1"=200'



Carole O. Fraunfelter
OR 1883-509
4 tracts, SW Qtr.
Sec. 13
Third Qtr. T3N, R9W
United States Military Lands
Jackson Township
Muskingum County, Ohio
Date: December 13, 2004