

29-40-14-07-001
9485 DOVE RD



LANDMARK SURVEYS

EARL R. DONAKER, P.S.

727 Cambridge Road
Coshocton, Ohio 43812

(614) 623-0993
1-800-842-3264

J.J. DETWEILER ENTERPRISES, INC.
TRACT 25: 5.010 Acres

Being 5.010 acres, more or less (0.019 acres part of parcel 29-10-07-20 in the southeast quarter of section 7) and (4.991 acres part of parcel 29-40-14-07 in the northeast quarter of section 14) in the second quarter of township 3 north, range 9 west, United States Military Lands, in the township of Jackson, in the county of Muskingum, in the State of Ohio, and more particularly described as follows:

Commencing at a stone found at the northwest corner of the northeast quarter of section 14;

thence, along the north & south quarterline the following 2 courses:

1. thence, S.00°12'10"W. 980.95' to a 5/8" steel pin set;
2. thence, continuing S.00°12'10"W. 15.02' to a point in Dove Road, TR 318A;

thence, along the centerline of Dove Road, TR 318A, N.89°30'57"E. 30.36' to a point, said point being the TRUE POINT OF BEGINNING;

thence, through the property of J.J. Detweiler Enterprises, Inc. 1115-238, the following 6 courses:

1. thence, N.00°12'53"E. 20.00' to a 5/8" steel pin set;
2. thence, N.00°12'53"E. 945.88' to a 5/8" steel pin set;
3. thence, N.80°40'57"E. 281.70' to a 5/8" steel pin set;
4. thence, S.07°55'53"W. 565.24' to a 5/8" steel pin set;
5. thence, continuing S.00°37'54"W. 430.00' to a 5/8" steel pin set;
6. thence, S.00°37'54"W. 20.00' to a point in the centerline of Dove Road, TR 318A;

thence, continuing through the property of J.J. Detweiler Enterprises, Inc. 1115-238 and along the centerline of Dove Road, TR 318A, S.89°30'57"W. 198.66' to the TRUE POINT OF BEGINNING, containing 5.010 acres, more or less, including public road right-of-way and is subject to all easements, rights-of-way, or restrictions, whether recorded or implied.

Bearings are assumed and are for angular calculations only. All 5/8" steel pins set are 30" long with plastic cap marked "E.R.D. 7142".

Pertinent documents: tax maps: 29-10, 29-40; deeds: 1068-548, 1087-201, 845-265, 963-199, 574-333, 820-99, 1027-349, 565-540, 970-345, 480-145, 979-254, 644-157, 979-248, 945-340, 1115-238; surveys by: Charles R. Harkness, Kenneth C. Varner.

Prior deed: 1115-238.

Description and plat by Landmark Surveys, Earl R. Donaker, Professional Surveyor, #7142, from a survey of the premises in the month of November, in the year of our Lord one thousand nine hundred and ninety-five.

OFFICE COPY
NOT RECORDABLE

DESCRIPTION APPROVED
FOR AUDITORS TRANSFER

BY

2-22-96

727 Cambridge Road
Coshocton, Ohio 43812

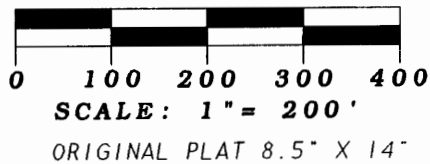
LANDMARK SURVEYS

EARL R. DONAKER, P.S.

tel: (614) 623-0993
1-800-842-3264

THIS PROPERTY IS SUBJECT TO
ALL EASEMENTS, RIGHTS-OF-WAY,
OR RESTRICTIONS, WHETHER
RECORDED OR IMPLIED.

Bearings are assumed and are for
angular calculations only.

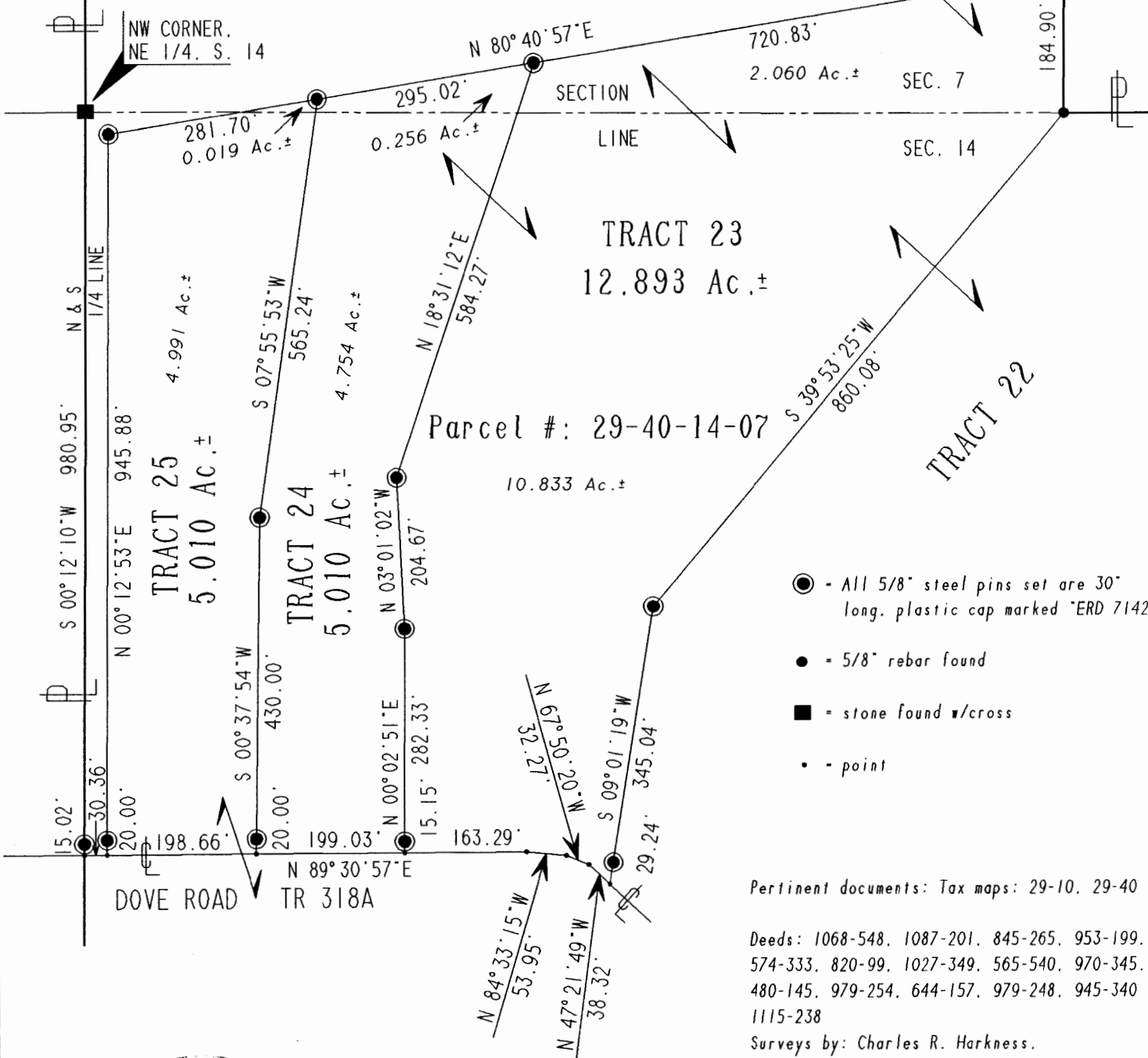


NOTE: Bearings & distances (B&D)
B&D between monumentation were measured.
B&D to points were calculated.
Record B&D as marked. (Rec)

J.J. DETWEILER ENTERPRISES, INC.
D.B. 1115, pg. 238

Parcel #: 29-10-07-20

TRACT 26



DESCRIPTION APPROVED
FOR AUDITORS TRANSFER

BY ATL
2-22-96

J.J. DETWEILER ENTERPRISES, INC.
TRACTS: 23, 24, 25
NE 1/4, SECTION 14
SECOND QUARTER, T 3 N.R 9 W.
UNITED STATES MILITARY LANDS
TOWNSHIP: JACKSON
COUNTY: MUSKINGUM, OHIO
DATE: NOVEMBER, 1995

I, Earl R. Donaker, P.S., 7142, hereby
certify this plat to represent a boundary
survey pursuant to Chapter 4733-37, Ohio
Administrative Code and to be correct to
the best of my knowledge and belief.

"Remove not the old landmark." Proverbs 23: 10