

ADDRESS N/A

727 Cambridge Road
Coshocton, Ohio 43812



LANDMARK SURVEYS

EARL R. DONAKER, P.S.

(614) 623-0993
1-800-842-3264

J.J. DETWEILER ENTERPRISES, INC.
TRACT 29: 0.371 Acres

Being 0.371 acres, more or less part of parcel 29-40-14-23 in the northeast quarter of section 14 in the second quarter of township 3 north, range 9 west, United States Military Lands, in the township of Jackson, in the county of Muskingum, in the State of Ohio, and more particularly described as follows:

Commencing at a stone found at the southeast corner of the northeast quarter of section 14;

thence, along the east & west quarterline, the following 3 courses:

1. thence, N.89°22'47"W. 346.50' to a 5/8" steel pin set;
2. thence, continuing N.89°22'47"W. 95.35' to a 5/8" steel pin set;
3. thence, continuing N.89°22'47"W. 69.84' to a point in the centerline of Dove Road, TR 318A, said point being the TRUE POINT OF BEGINNING;

thence, continuing along the east & west quarterline the following 2 courses:

1. thence, N.89°22'47"W. 205.32' to a 5/8" steel pin set;
2. thence, continuing N.89°22'47"W. 487.80' to a 5/8" steel pin set;

thence, through the property of J.J. Detweiler Enterprises, Inc. 1115-238 the following 3 courses:

1. thence, N.80°54'32"E. 66.76' to a 5/8" steel pin set;
2. thence, N.87°02'01"E. 407.76' to a 5/8" steel pin set;
3. thence, continuing N.87°02'01"E. 74.57' to a point in the centerline of Dove Road, TR 318A;

thence, through the property of J.J. Detweiler Enterprises, Inc. 1115-238, and along the centerline of Dove Road, TR 318A, the following 3 courses:

1. thence, S.72°32'21"E. 30.49' to a point;
2. thence, S.75°02'23"E. 106.91' to a point;
3. thence, S.64°26'25"E. 14.53' to the TRUE POINT OF BEGINNING, containing 0.371 acres, more or less, including public road right-of-way and is subject to all easements, rights-of-way, or restrictions, whether recorded or implied.

Bearings are assumed and are for angular calculations only. All 5/8" steel pins set are 30" long with plastic cap marked "E.R.D. 7142".

Pertinent documents: tax maps: 29-10, 29-40; deeds: 1068-548, 1087-201, 845-265, 963-199, 574-333, 820-99, 1027-349, 565-540, 970-345, 480-145, 979-254, 644-157, 979-248, 945-340, 1115-238; surveys by: Charles R. Harkness, Kenneth C. Varner.

Prior deed: 1115-238.

Description and plat by Landmark Surveys, Earl R. Donaker, Professional Surveyor, #7142, from a survey of the premises in the month of November, in the year of our Lord one thousand nine hundred and ninety-five.

**OFFICE COPY
NOT RECORDABLE**

DESCRIPTION APPROVED
FOR AUDITORS TRANSFER

BY ATL
3-11-96

29-40-14-23-014
29-40-14-23-015
29-40-14-23-016
ADDRESS N/A

THIS PROPERTY IS SUBJECT TO
ALL EASEMENTS, RIGHTS-OF-WAY,
OR RESTRICTIONS, WHETHER
RECORDED OR IMPLIED.

727 Cambridge Road
Coshocton, Ohio 43812

LANDMARK SURVEYS
EARL R. DONAKER, P.S.

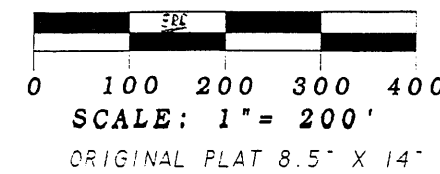
tel: (614) 623-0993
1-800-842-3264

Bearings are assumed and are for
angular calculations only.

Pertinent documents: Tax maps: 29-10, 29-40

Deeds: 1068-548, 1087-201, 845-265, 953-199,
574-333, 820-99, 1027-349, 565-540, 970-345,
480-145, 979-254, 644-157, 979-248, 945-340
1115-238

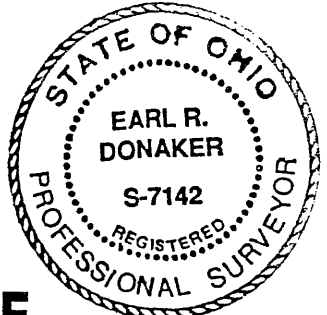
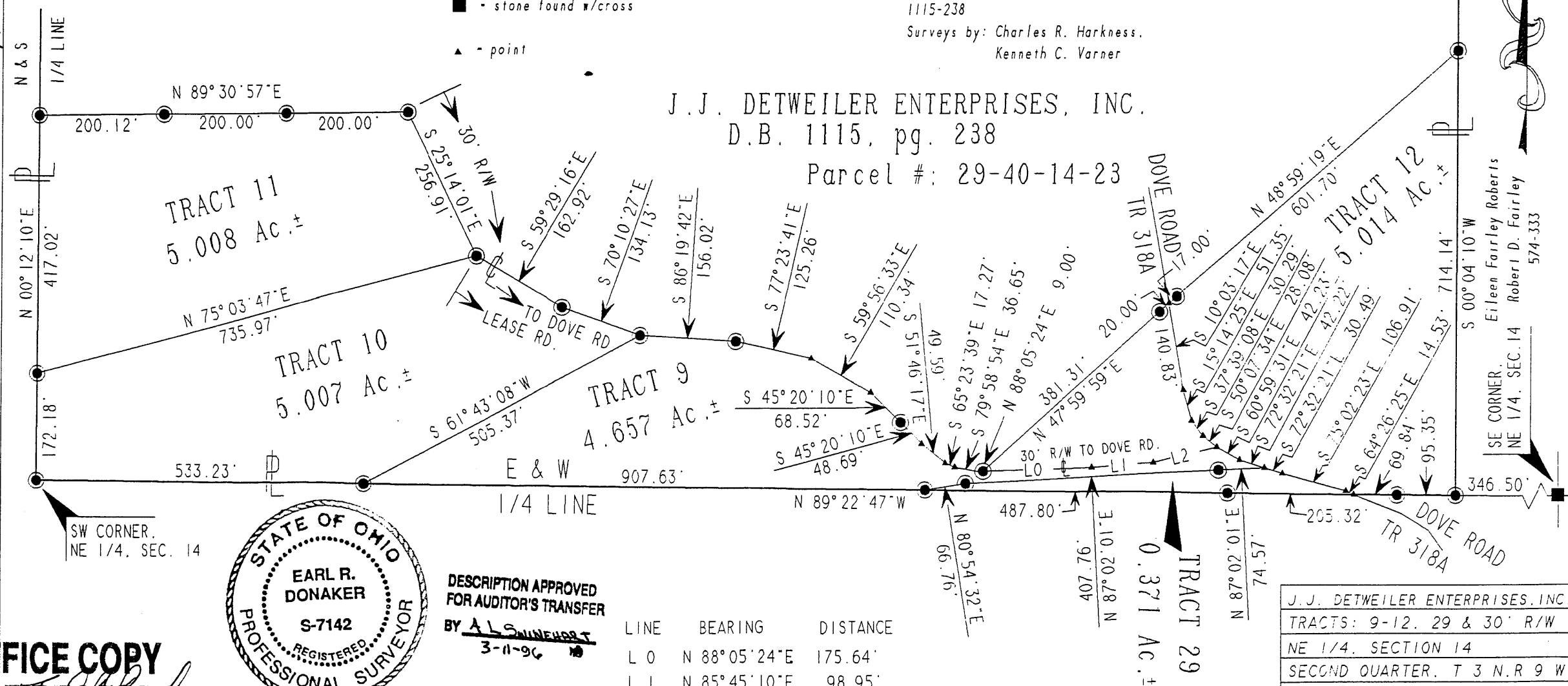
Surveys by: Charles R. Harkness,
Kenneth C. Varner



NOTE: Bearings & distances (B&D)
B&D between monumentation were measured.
B&D to points were calculated.
Record B&D as marked. (Rec)

- = All 5/8" steel pins set are 30" long, plastic cap marked "ERD 7142"
- = 5/8" rebar found
- = stone found w/cross
- ▲ = point

J.J. DETWEILER ENTERPRISES, INC.
D.B. 1115, pg. 238
Parcel #: 29-40-14-23



DESCRIPTION APPROVED
FOR AUDITOR'S TRANSFER
BY A. L. SWINEHART
3-11-96

LINE	BEARING	DISTANCE
L 0	N 88°05'24"E	175.64'
L 1	N 85°45'10"E	98.95'
L 2	N 76°10'04"E	105.19'

Tract 29 to be transferred
to adjoiner.

J.J. DETWEILER ENTERPRISES, INC.
TRACTS: 9-12, 29 & 30' R/W
NE 1/4, SECTION 14
SECOND QUARTER, T 3 N. R 9 W.
UNITED STATES MILITARY LANDS
TOWNSHIP: JACKSON
COUNTY: MUSKINGUM, OHIO
DATE: NOVEMBER, 1995

OFFICE COPY
NOT RECORDABLE

I, EARL R. DONAKER, S-7142, hereby
certify this plat to represent a boundary
survey pursuant to Chapter 4733-37, Ohio
Administrative Code, and to be correct to
the best of my knowledge and belief.

"Remove not the old landmark." Proverbs 23:10