

727 Cambridge Road
Coshocton, Ohio 43812



LANDMARK SURVEYS
EARL R. DONAKER, P.S.

(614) 623-0993
1-800-842-3264

29-40-14-23-016
ADDRESS N/A

J.J. DETWEILER ENTERPRISES, INC.
TRACT 11: 5.008 Acres

Being 5.008 acres, more or less part of parcel 29-40-14-23 in the northeast quarter of section 14 in the second quarter of township 3 north, range 9 west, United States Military Lands, in the township of Jackson, in the county of Muskingum, in the State of Ohio, and more particularly described as follows:

Commencing at a 5/8" steel pin set at the southwest corner of the northeast quarter of section 14;

thence, along the north & south quarterline N.00°12'10"E. 172.18' to a 5/8" steel pin set said 5/8" steel pin set being the TRUE POINT OF BEGINNING;

thence, continuing along the north & south quarterline N.00°12'10"E. 417.02' to a 5/8" steel pin set;

thence, through the property of J.J. Detweiler Enterprises, Inc. 1115-238, the following 5 courses:

1. thence, N.89°30'57"E. 200.12' to a 5/8" steel pin set;
2. thence, continuing N.89°30'57"E. 200.00' to a 5/8" steel pin set;
3. thence, continuing N.89°30'57"E. 200.00' to a 5/8" steel pin set;
4. thence, S.25°14'01"E. 256.91' to a 5/8" steel pin set;
5. thence, S.75°03'47"W. 735.97' to the TRUE POINT OF BEGINNING, containing 5.008 acres, more or less, and is subject to all easements, rights-of-way, or restrictions, whether recorded or implied.

30' NON-EXCLUSIVE EASEMENT

Granting to the Grantee, Grantee's heirs and assigns and reserving for the Grantor, Grantor's heirs and assigns, a 30' non-exclusive easement along the centerline of the present lease road, for ingress, egress and regress to and from Dove Road, TR 318A to the above described tract and being more particularly described as follows:

Commencing at a 5/8" steel pin set at the southwest corner of the northeast quarter of section 14, thence, along the north & south quarterline N.00°12'10"E. 589.20' to a 5/8" steel pin set;

thence, through the property of J.J. Detweiler Enterprises, Inc. 1115-238, N.89°30'57"E. 600.12' to a 5/8" steel pin set, said 5/8" steel pin set being the TRUE POINT OF BEGINNING OF THE EASEMENT, said easement being 15' either side of the following described centerline;

thence, through the property of J.J. Detweiler Enterprises, Inc. 1115-238, and along the east line of Tract 11, S.25°14'01"E. 256.91' to a 5/8" steel pin set;

thence, through the property of J.J. Detweiler Enterprises, Inc. 1115-238, and along the centerline of a lease road the following 14 courses:

- | | |
|---|--|
| 1. thence, S.59°29'16"E. 162.92' to a 5/8" steel pin set; | 9. thence, S.65°23'39"E. 17.27' to a point; |
| 2. thence, S.70°10'27"E. 134.13' to a 5/8" steel pin set; | 10. thence, S.79°58'54"E. 36.65' to a point; |
| 3. thence, S.86°19'42"E. 156.02' to a 5/8" steel pin set; | 11. thence, N.88°05'24"E. 9.00' to a 5/8" steel pin set; |
| 4. thence, S.77°23'41"E. 125.26' to a point; | 12. thence, N.88°05'24"E. 175.64' to a point; |
| 5. thence, S.59°56'33"E. 110.34' to a point; | 13. thence, N.85°45'10"E. 98.95' to a point; |
| 6. thence, S.45°20'10"E. 68.52' to a 5/8" steel pin set; | 14. thence, N.76°10'04"E. 105.19' to point in the |
| 7. thence, continuing S.45°20'10"E. 48.69' to a point; | centerline of Dove Road, TR 318A, said point being |
| 8. thence, S.51°46'17"E. 49.59' to a point; | TRUE POINT OF ENDING OF THE EASEMENT. |

Bearings are assumed and are for angular calculations only. All 5/8" steel pins set are 30" long with plastic cap marked "E.R.D. 7142".

Pertinent documents: tax maps: 29-10, 29-40; deeds: 1068-548, 1087-201, 845-265, 963-199, 574-333, 820-99, 1027-349, 565-540, 970-345, 480-145, 979-254, 644-157, 979-248, 945-340, 1115-238; surveys by: Charles R. Harkness, Kenneth C. Varner.

Prior deed: 1115-238.

Description and plat by Landmark Surveys, Earl R. Donaker, Professional Surveyor, #7142, from a survey of the premises in the month of November, in the year of our Lord one thousand nine hundred and ninety-five.

**OFFICE COPY
NOT RECORDABLE**

DESCRIPTION APPROVED
FOR AUDITORS TRANSFER
BY ALB

3-11-96

29-40-14-23-014
29-40-14-23-015
29-40-14-23-016
ADDRESS N/A

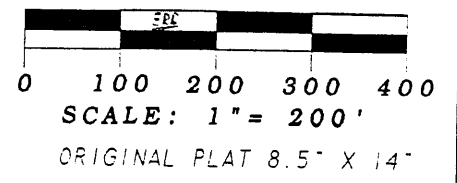
THIS PROPERTY IS SUBJECT TO
ALL EASEMENTS, RIGHTS-OF-WAY,
OR RESTRICTIONS, WHETHER
RECORDED OR IMPLIED.

727 Cambridge Road
Coshocton, Ohio 43812

LANDMARK SURVEYS
EARL R. DONAKER, P.S.

tel: (614) 623-0993
1-800-842-3264

Bearings are assumed and are for
angular calculations only.



NOTE: Bearings & distances (B&D)
B&D between monumentation were measured.
B&D to points were calculated.
Record B&D as marked. (Rec)

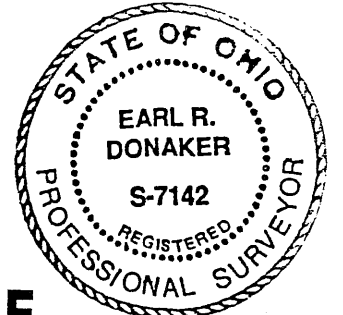
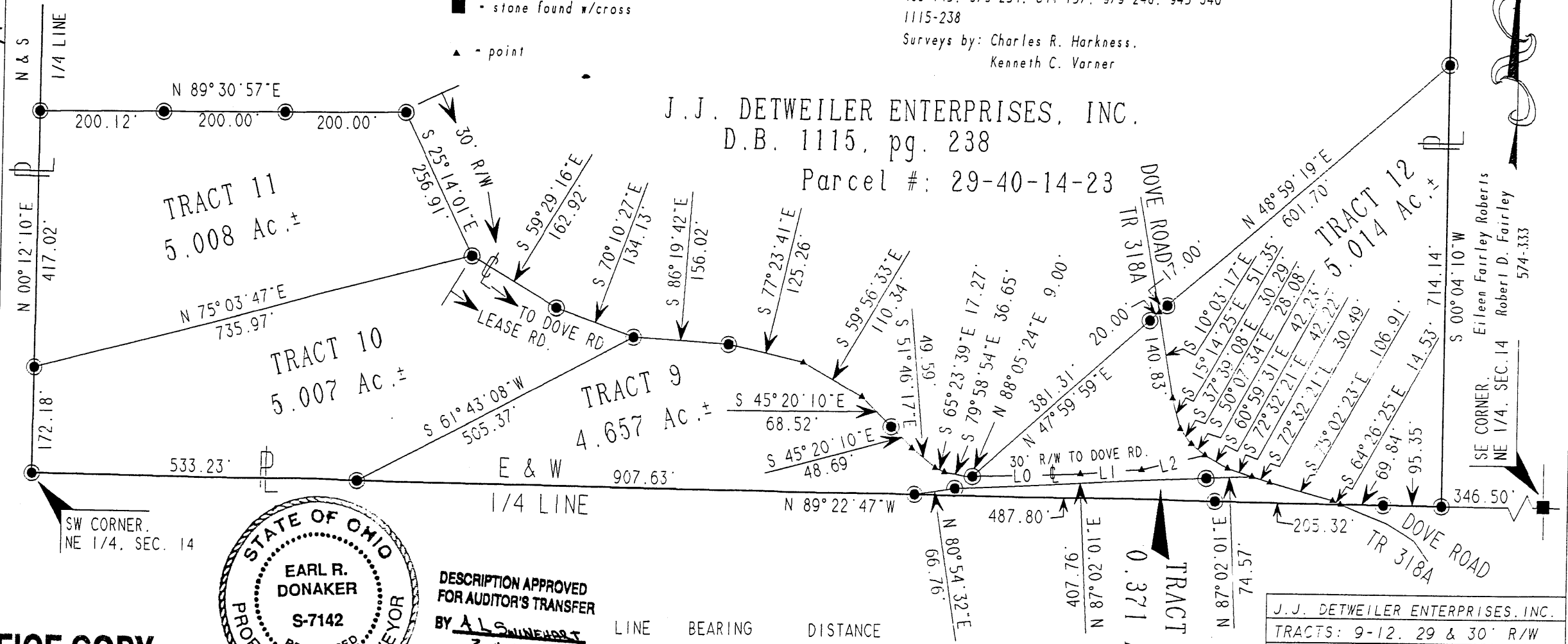
- - All 5/8" steel pins set are 30" long, plastic cap marked "ERD 7142"
- - 5/8" rebar found
- - stone found w/cross
- ▲ - point

Pertinent documents: Tax maps: 29-10, 29-40

Deeds: 1068-548, 1087-201, 845-265, 953-199,
574-333, 820-99, 1027-349, 565-540, 970-345,
480-145, 979-254, 644-157, 979-248, 945-340
1115-238

Surveys by: Charles R. Harkness,
Kenneth C. Varner

J.J. DETWEILER ENTERPRISES, INC.
D.B. 1115, pg. 238
Parcel #: 29-40-14-23



DESCRIPTION APPROVED
FOR AUDITOR'S TRANSFER
BY A.L. SWINEHART
3-11-96

LINE	BEARING	DISTANCE
L 0	N 88°05'24"E	175.64'
L 1	N 85°45'10"E	98.95'
L 2	N 76°10'04"E	105.19'

Tract 29 to be transferred
to adjoiner.

J.J. DETWEILER ENTERPRISES, INC.
TRACTS: 9-12, 29 & 30' R/W
NE 1/4, SECTION 14
SECOND QUARTER, T 3 N.R 9 W.
UNITED STATES MILITARY LANDS
TOWNSHIP: JACKSON
COUNTY: MUSKINGUM, OHIO
DATE: NOVEMBER, 1995

OFFICE COPY
NOT RECORDABLE

142, hereby
certify this plat to represent a boundary
survey pursuant to Chapter 4733-37, Ohio
Administrative Code and to be correct to
the best of my knowledge and belief.

"Remove not the old landmark." Proverbs 23:10