

DESCRIPTON OF 0.264 ACRES

Situated in the State of Ohio, County of Muskingum, Village of Fazeysburg and being in the S.E. ¼ of Section 19, Jackson Township, T-3, R-9, Parcel No. 29-62-03-13-000 and being conveyed to Bruce D. and Renee T. Holmes as shown in O.R. 1523, page 0763, and being more particularly described as follows:

Commencing at a point at the intersection of the west line of the S.E. ¼ of section 19 and the south corporation line of Fazeysburg (P.B. 10, Pg. 30), thence;

S88°07'49"E a distance of 528.74 feet with the south corporation line to a Capped I.P. (found), stamped "SMB 7135", said I.P. also being on the S.E. line of Canal Street, thence;

N42°56'44"E a distance of 864.02 feet with said S.E. line to a steel Monument (found), said Monument also being the northeastern corner of a 0.227 acre tract conveyed to Steven D. & Christine L. Wolford, shown in D.B. 1018, Pg. 485, also being the northwestern corner of Parcel No. 29-6203-13-000, (the herein described tract), said Monument also being the **TRUE PLACE OF BEGINNING** for this legal description, thence;

N42°56'44"E a distance of 28.31 feet with said S.E. line to a called for Axle, thence;

N42°37'39"E a distance of 23.50 feet with said S.E. line to a point, said point also being the southwestern corner of a 0.205 acre tract conveyed to Ronald & Irene Bush, show in D.B. 582, Pg. 142, said point being referenced by a 1" I.P. (found, N47°22' 00"W, 2.47') thence;

S47°22'21"E a distance of 165.00 feet with the south line of said Bush tract to a point at the southeastern corner of said Bush tract and being on a northern line of a called for 16.50' wide alley, and said point being referenced by a Steel Monument (found), and located (S47°01'51"W, 4.18') of said point, thence;

S42°37'39"W a distance of 87.38 feet with northern line of said alley to a steel fence post, said post being a corner of a 4.52 acre tract conveyed to Betty L. Myers Family Living Trust, shown in D.B. 2193, Pg. 874, thence;

N35°13'07"W a distance of 168.94 feet with a northern line of said Myers tract and being the northern line of said Wolford tract returning to the **TRUE PLACE OF BEGINNING** and containing **0.264 acres** more or less, subject however to all legal easements and rights-of-way of record.

See Exhibit "A" attached and made part thereof.

Basis of Bearings:

Bearings are based on the S.E. Line of Canal Road as being N42°56'44"E as shown on a survey drawing by Stephen M. Bowman P.S. 7135, dated 01/23/1997, for the lands of M. Dolder, shown in D.B. 782, Pg. 78, on file at the Muskingum County Engineer's Office

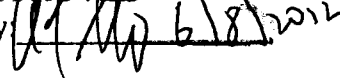
I hereby certify that this description is true and correct to the best of my knowledge and this legal is created from an actual field survey performed on May, 2012, and from records on file at the Auditor, Recorder, and Engineer Office's, Muskingum County, Ohio.

Iron Pins (I/P) set are 5/8" x 60" long Rebar.

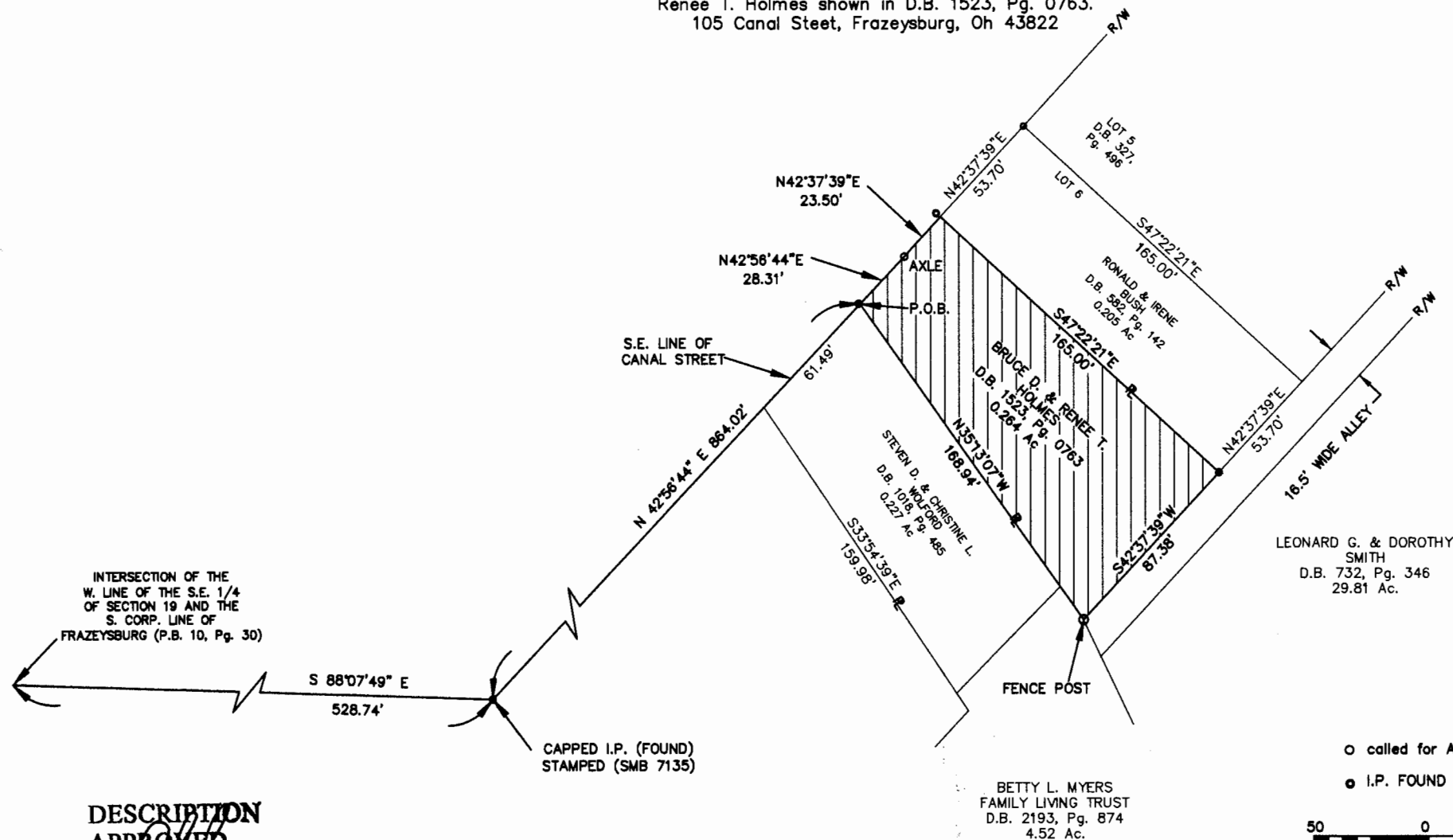
**OFFICE COPY
NOT RECORDABLE**
Timothy A. Ericsson P.S. #8067
06/0/2012

DESCRIPTION

APPROVED

By  6/8/2012

PLAT OF 0.264 ACRES
 PARCEL No. 29-62-03-13-00
 Situated in the State of Ohio, County of Muskingum, Village of
 Fazeysburg and being in the S.E. 1/4 of Section 19,
 T-3, R-9, Jackson Township and being conveyed to Bruce D. &
 Renee T. Holmes shown in D.B. 1523, Pg. 0763.
 105 Canal Steet, Fazeysburg, Oh 43822



DESCRIPTION
 APPROVED

By:

[Signature] 6/8/2012

BASIS OF BEARING:

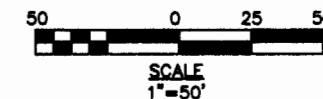
Bearings are based on the S.E. Line of Canal Road as being $N42^{\circ}56'44''E$ as shown on a survey drawing by Stephen M. Bowman P.S. 7135, dated 01/23/1997, for the lands of M. Dolder, shown in D.B. 782, Pg. 78, on file at the Muskingum County Engineer's Office

This Plat was prepared from record's on file at the Muskingum County Auditor & Recorder's & Engineer's Offices and from an actual field survey performed on May, 2012.

I hereby certify that this Plat is True and Correct to the best of my knowledge.

○ called for AXLE

● I.P. FOUND



**OFFICE COPY
 NOT RECORDABLE**

Registered Surveyor No. 8067 06/06/2012
 Timothy A. Ericsson

