

**BOWMAN & ASSOCIATES**  
59 SECOND STREET  
FRAZEYSBURG, OHIO 43822  
PH./FAX (614) 828-2204

29-90-21-26  
9575 SHANNON RD

**SURVEY DESCRIPTION**  
**FOR**  
**Ruth Bollinger**

Page 1 of 2

**PART OF AUDITORS PARCELS**  
**#29-90-21-26-000**

Situated in the Southeast Quarter of section #21, T-3, R-9, Jackson Township, Muskingum County, Ohio. Being part of the lands of Ruth Bollinger as conveyed in deed book 536 page 729 of the Muskingum County Deed records and being described as follows:

Commencing at the Southwest corner of the Southeast Quarter of section 21; thence, N.00°31'56"W. a distance of 659.96 feet along the West line of said quarter section to a found iron pin; thence, N.89°47'19"E. a distance of 455.18 feet along the North line of the lands, now or formerly, owned by C. Green (1109/428) to a found iron pipe; thence, N.00°12'41"W. a distance of 990.00 feet along said Green lands to a found iron pipe; thence, N.89°29'07"E. a distance of 1,452.53 feet along said Green lands to a point; thence, N.00°30'53"W. a distance of 122.19 feet through the lands of R. Bollinger (536/729) to a set rebar, **BEING THE POINT OF BEGINNING**;

thence, N.03°02'26"W. a distance of 209.60 feet through said Bollinger lands to a set rebar;

thence, N.82°45'01"E. a distance of 135.18 feet through said Bollinger to a point in the center of a gravel drive, passing a set rebar at 120.67 feet;

thence, continuing along the centerline of said gravel drive and through said Bollingers lands the following 5 course's and distances,  
S.15°38'23"E. a distance of 160.07 feet to a point;

thence, S.01°42'09"E. a distance of 27.34 feet to a set railroad spike;

thence, S.23°53'14"W. a distance of 37.03 feet to a point;

thence, S.71°58'34"W. a distance of 57.40 feet to a point;

thence, N.86°02'48"W. a distance of 97.60 feet to the point of beginning.

The above described parcel contains 0.788 acres, more or less, and is subject to all legal easements and right of ways. All set rebars are 5/8" x 30" rebars. North is based an assumed meridian.

DESCRIPTION APPROVED  
FOR AUDITOR'S FILE

BY

9-3-96

Ruth Bollinger  
Attached 50' R/W

Also attached to, and reserved from, the previously described 0.788 acre parcel is a 50 foot wide easement for ingress, egress, utilities and drainage purposes. The centerline of said easement is described as follows:

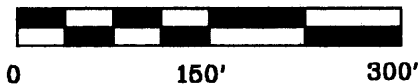
Commencing at the Southwest corner of the Southeast Quarter of section 21; thence, N.00°31'56"W. a distance of 659.96 feet along the West line of said quarter section to a found iron pin; thence, N.89°47'19"E. a distance of 455.18 feet along the North line of the lands, now or formerly, owned by C. Green (1109/428) to a found iron pipe; thence, N.00°12'41"W. a distance of 990.00 feet along said Green lands to a found iron pipe; thence, N.89°29'07"E. a distance of 1,452.53 feet along said Green lands to a point; thence, N.00°30'53"W. a distance of 122.19 feet through the lands of R. Bollinger (536/729) to a set rebar, **BEING THE POINT OF BEGINNING**;

thence, following along the center of an existing gravel drive, and through the lands of R. Bollinger (536/729), the following 12 courses and distances, S.86°02'48"E. a distance of 97.60 feet to a point; thence, N.71°58'34"E. a distance of 57.40 feet to a point; thence, N.23°53'14"E. a distance of 37.03 feet to a set railroad spike; thence, N.01°42'09"W. a distance of 27.34 feet to a point; thence, N.15°38'23"W. a distance of 160.07 feet to a point, located on the Northeast corner of a 0.788 acre parcel; thence, N.03°45'22"E. a distance of 71.23 feet to a set railroad spike; thence, N.62°30'35"E. a distance of 37.02 feet to a point; thence, S.52°53'08"E. a distance of 276.47 feet to a set railroad spike; thence, S.63°44'51"E. a distance of 285.73 feet to a point;

thence, S.55°56'26"E. a distance of 122.62 feet to a point; thence, S.67°49'57"E. a distance of 45.82 feet to a set railroad spike; thence, N.49°33'27"E. a distance of 22.12 feet to a point in the center of C.R. #48 (Shannon Road) being the terminus point this right of way.

Description was prepared from an actual survey by Bowman & Associates, Stephen M. Bowman, P.S.#7135. August 30, 1996.

NORTH IS BASED UPON  
AN ASSUMED MERIDIAN  
SCALE 1" = 150'



PART OF PARCEL  
29-90-21-28-000

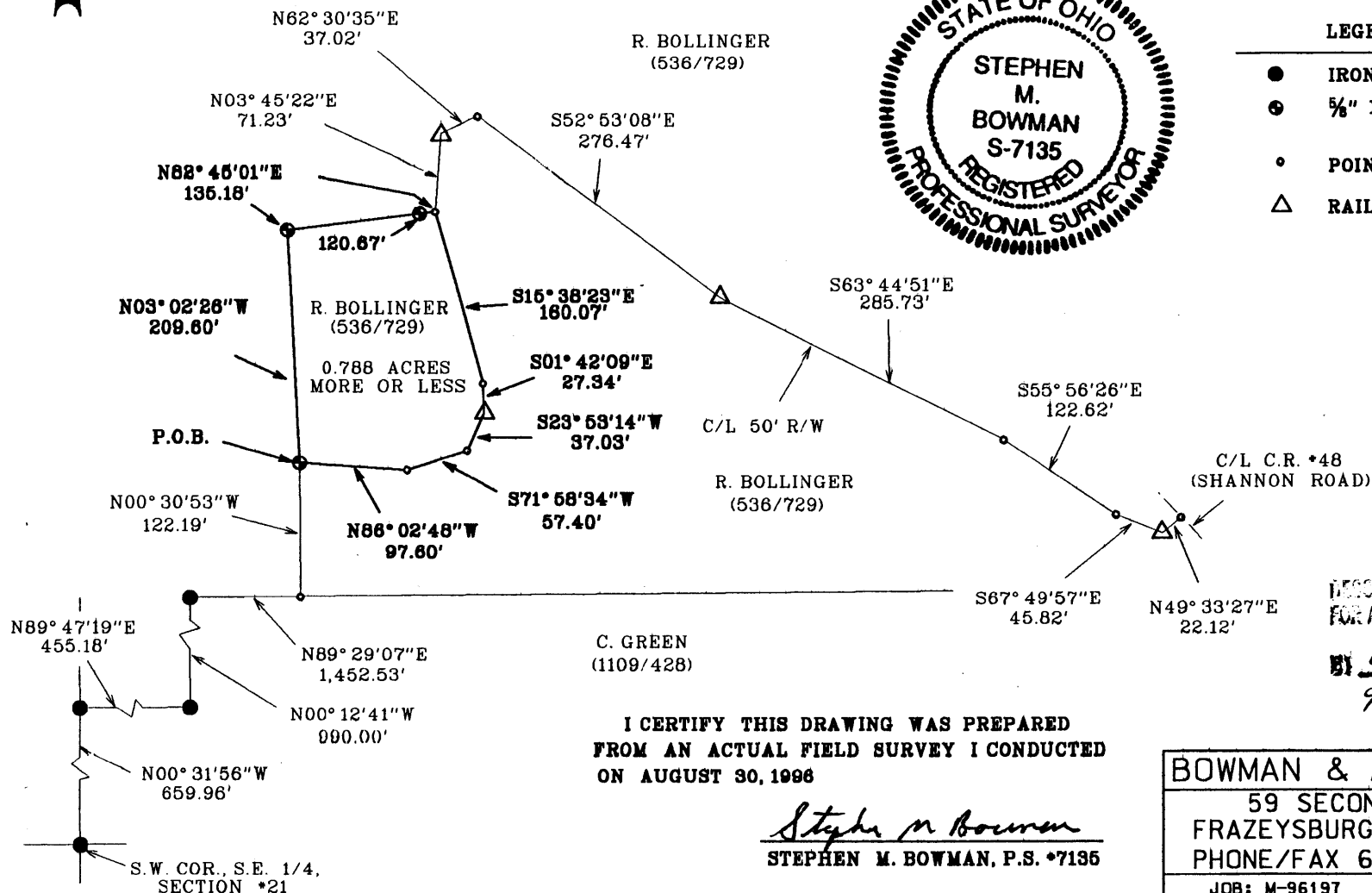
# SURVEY PLAT FOR RUTH BOLLINGER

SITUATED IN THE SOUTHEAST QUARTER OF SECTION \*21  
T-3-N, R-9-W, U.S.M.L., JACKSON TOWNSHIP, MUSKINGUM COUNTY,  
OHIO. BEING PART OF THE LANDS OF RUTH BOLLINGER AS  
CONVEYED IN DEED BOOK 536 PAGE 729 OF THE  
MUSKINGUM COUNTY DEED RECORDS.



## LEGEND

- IRON PIN FOUND
- ⊙ 5/8" X 30" REBAR SET W/ I.D. CAP
- POINT
- △ RAIL ROAD SPIKE SET



I CERTIFY THIS DRAWING WAS PREPARED  
FROM AN ACTUAL FIELD SURVEY I CONDUCTED  
ON AUGUST 30, 1996

*Stephen M. Bowman*  
STEPHEN M. BOWMAN, P.S. \*7135

DESCRIPTION APPROVED  
FOR AUDITOR'S REVIEW

BY *[Signature]*  
9-3-96

BOWMAN & ASSOCIATES

59 SECOND STREET  
FRAZEYSBURG, OHIO 43822  
PHONE/FAX 614-828-2204

JOB: M-96197

DATE: 08/30/96