

ADAMSS N/A

BOWMAN AND ASSOCIATES  
91 BASIN STREET  
FRAZEYSBURG OHIO 43822  
614-828-2204

SURVEY DESCRIPTION  
FOR  
Ida Mae Vickers

Par. #29-29-50-19-10-000  
#29-29-90-22-11-000 (PART)  
#29-29-90-22-08-000  
#29-29-90-22-07-000  
#29-29-90-22-06-000

PS

Situated in Sections #19 and #22, T-3-N, R-9-W, Jackson Township, Muskingum County, Ohio. Being part of the lands of Ida Mae Vickers as conveyed in Deed books 507, page 100 and 679 page 046 of the Muskingum County Deed records and being more particularly described as follows:

Beginning at an iron pin set in the Southwest corner of the Northwest quarter of section #22; thence, N.00°24'11"E. a distance of 1,297.96 feet along the West line of said quarter section to a set iron pin on the South line of Muskingum County lands, formerly the Ohio Canal Lands, (886/259); thence, along said County lands and through The Canal Road right of way the following four courses and distances, N.62°55'13"E. a distance of 1,098.87 feet to a set rail road spike; thence, N.55°02'09"E. a distance of 116.81 feet to a set railroad spike; thence, N.45°51'44"E. a distance of 183.31 feet to a set railroad spike; thence, N.44°24'32"E. a distance of 982.72 feet to a point at the center of the Wakatomika Creek, passing a found iron pin at 890.14 feet; thence, meandering with the centerline of said creek the following five courses and distances, S.42°27'03"E. a distance of 569.36 feet to a point; thence, S.84°24'33"E. a distance of 203.76 feet to a point; thence, N.65°17'27"E. a distance of 137.34 feet to a point; thence, N.72°53'12"E. a distance of 103.39 feet to a point; thence, N.77°12'27"E. a distance of 130.53 feet to a point; thence, N.45°52'33"W. a distance of 896.26 feet leaving Wakatomika Creek and along the Easterly line of the Village of Frazeytsburg lands (1040/124) to a point on the South line of the aforesaid Muskingum County lands (886/259), passing a found iron pin at 105.00 feet and a found iron pin at 889.78 feet; thence, N.44°24'15"E. a distance of 683.31 feet along the South line of said County lands to a found iron pin; thence, N.42°18'34"E. a distance of 398.63 feet along said County lands to a set iron pin; thence, N.39°39'45"E. a distance of 362.57 feet along said County lands to a set iron pin on the South line of the Village of Frazeytsburg (P.B. 10 pg.30); thence, N.89°38'58"E. a distance of 250.23 feet along said Village line to a set iron pin on the westerly line of H. & B. Myers (620/144), passing a set iron pin on the South line of Canal Road at 27.10 feet; thence, S.28°07'44"E. a distance of 1,154.95 feet to a point in the center of the Wakatomika Creek, passing a set iron pin at 1,089.95 feet; thence, along the centerline of said creek the following seven courses and distances, S.53°15'31"W. a distance of 74.28 feet to a point; thence, S.28°46'35"W. a distance of 158.50 feet to a point; thence, S.39°29'24"W. a distance of 115.61 feet to a point; thence, S.48°33'00"W. a distance of 360.20 feet to a point; thence, S.38°01'43"W. a distance of 122.24 feet to a point; thence, S.28°44'35"W. a distance of 172.32 feet to a point; thence, S.37°45'10"W. a distance of 84.40 feet to a point; thence, S.36°52'40"W. a distance of 582.16 feet leaving wakatomika creek and along the lands of D. (Vickers) Starner (451/299) to a chiseled "X" on a sandstone boulder being referenced by a set iron pin S.70°09'22"E. at 5.30 feet, passing a set iron pin at 100.00 feet; thence, S.02°19'38"W. a distance of 918.06 feet along said Starner lands to a set iron pin; thence, S.05°04'38"W. a distance of 595.98 feet along said Starner lands to a set iron pin; thence, S.04°40'22"E. a distance of 231.00 feet along said Starner lands to a set iron pin on the South line of the Northeast quarter of section #22; thence, S.89°49'37"W. a distance of 139.00 feet along said quarter section line to a stone found marking the Southeast corner of the Northwest quarter of section #22; thence, S.89°49'37"W. a distance of 2,720.95 feet along the South line of said quarter section to the point of beginning, passing a set iron pin at 890.71 feet and 940.71 feet.

The above described parcel contains 179.981 acres, more or less, and is subject to all legal easements and right of ways. 125.484 acres located in the Northwest quarter of section #22, 19.672 acres located in the Northeast quarter of section #22, 4.978 acres located in the Southwest quarter of section #19, and 29.847 acres located in the Southeast quarter of section #19. North is based upon an assumed meridian. All set iron pins are 3/4" x 30" pipes with I.D. caps.

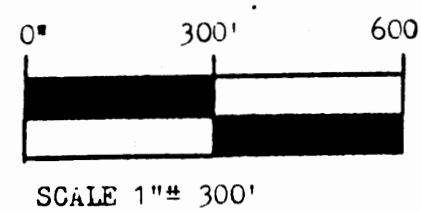
Description prepared from an actual field survey by Bowman & Associates,  
Stephen M. Bowman P.S. #7135. January 27, 1991.

**OFFICE COPY  
NOT RECORDABLE**

DESCRIPTION APPROVED  
FOR AUDITOR'S TRANSFER

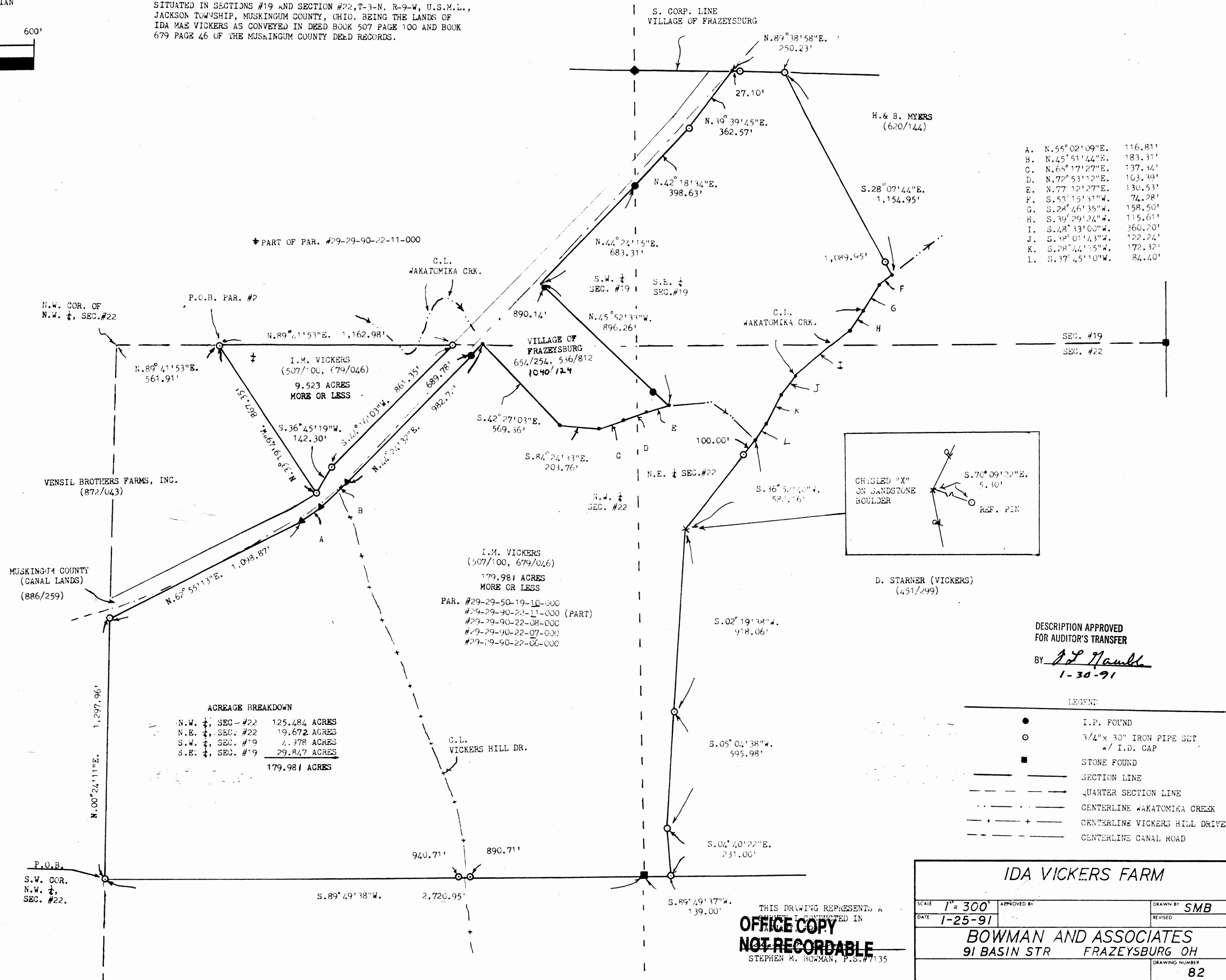
BY J L Hambl  
1-30-91

NORTH IS BASED UPON  
AN ASSUMED MERIDIAN



SURVEY PLAT FOR IDA MAE VICKERS

SITUATED IN SECTIONS #19 AND SECTION #22, T-3-N, R-9-W, U.S.M.L.,  
JACKSON TOWNSHIP, MUSKINGUM COUNTY, OHIO. BEING THE LANDS OF  
IDA MAE VICKERS AS CONVEYED IN DEED BOOK 507 PAGE 100 AND BOOK  
679 PAGE 46 OF THE MUSKINGUM COUNTY DEED RECORDS.



THIS DRAWING REPRESENTS A  
SURVEY CONDUCTED IN  
**OFFICE COPY  
NOT RECORDABLE**  
STEPHEN M. BOWMAN, P.S.#7135