

# SITUATED IN:

State of Ohio, County of Muskingum, Township of Licking,  
Quarter Township 2, and being part of Lot 22, of  
Valli-Vue Heights, No. 2, (Pl. Bk. 14, Pg. 11)  
Township 2, Range 9, United States Military Lands

## BASIS OF BEARINGS

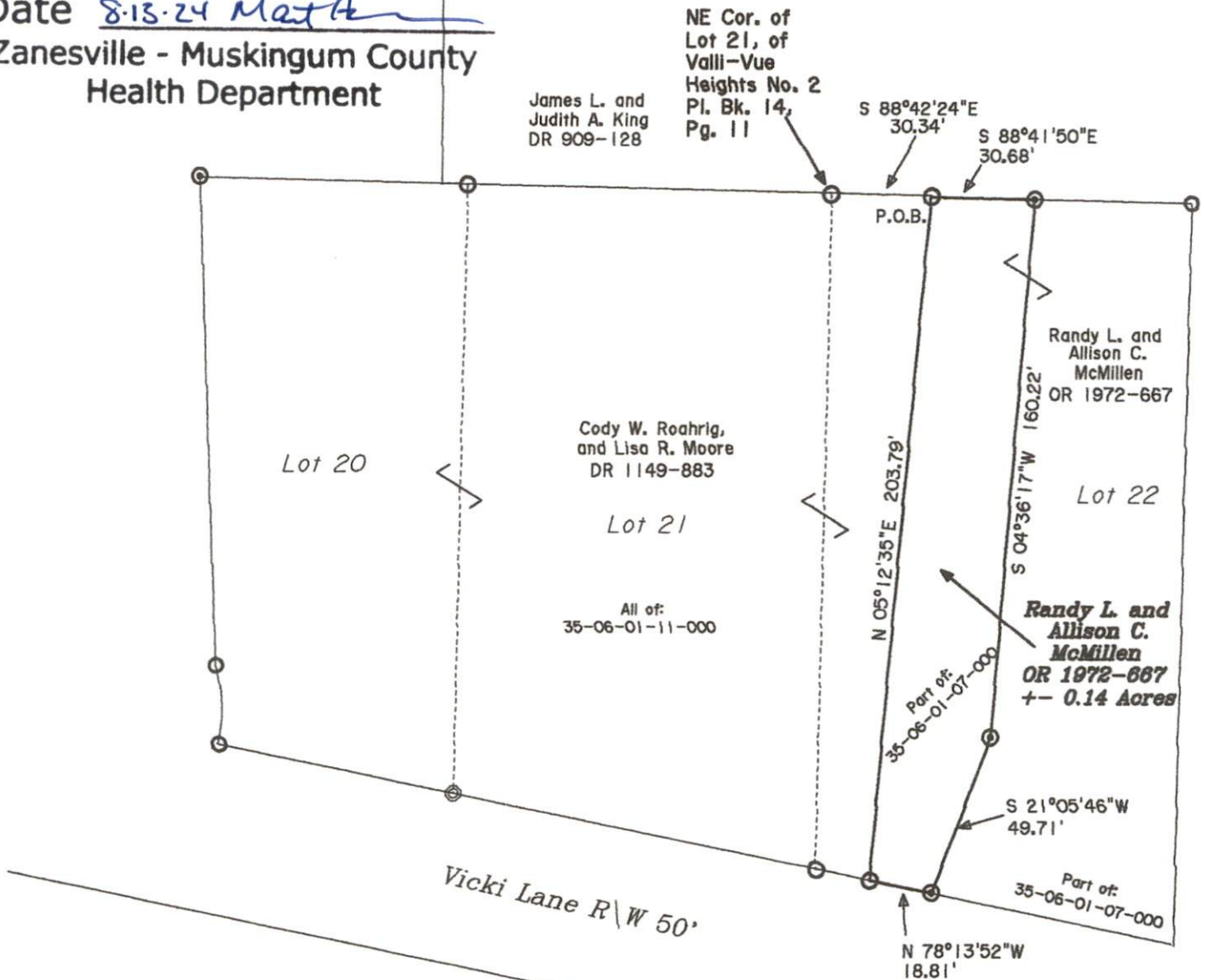
Bearings are based on the Ohio State Plane Coordinate  
System, NAD 83, South Zone, Grid North, as per GPS  
observations.

## REFERENCES

Previous Survey by W.J. Biedenbach  
Valli-Vue Subdivision Plat

Approved For Transfer  
No On-Lot Sewage

Date 8-13-24 Matt  
Zanesville - Muskingum County  
Health Department



## LEGEND

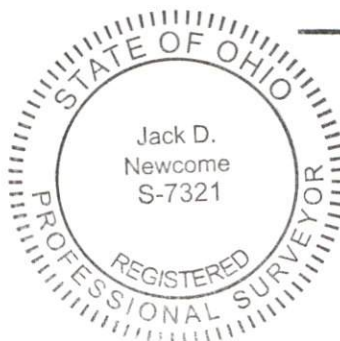
- △ Railroad Spike Set
- Iron Pin Found
- ⊕ Stone Found
- Axle Found
- Iron Pipe Found
- ▲ Railroad Spike Found
- ⊙ Iron Pin Set, 5/8" rebar  
30" Long
- ⊗ Monument Found
- ⊙ Bolt Found

## DESCRIPTION

APPROVED  
By: Matt 8/18/24

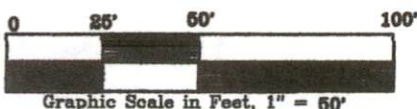
APPROVED  
MUSKINGUM COUNTY  
PLANNING COMMISSION DIRECTOR

DATE



Not to be used as a separate building  
site or transferred as an independent  
parcel in the future without planning  
commission approval in accordance  
with applicable subdivision regulations.

OFFICE COPY  
NOT RECORDABLE  
Jack D. Newcome 8-7-24  
Reg. Surveyor No. 7321



Newcome Surveying Company  
6515 Ballard Road  
Nashport, Ohio  
740-452-5796