

**BOWMAN SURVEYING  
38 N. 4<sup>TH</sup> STREET, RM. 103  
ZANESVILLE, OHIO  
PH./FAX (740) 454-0496**

**DRAFT**

**SURVEY DESCRIPTION  
FOR  
CRIMSON KING FARMS, LLC**

PART OF AUDITORS PARCEL  
35-10-41-34-000 (26.377 Acres)

Situated in Lots 3 & 4, Quarter Township 1, T-2-N, R-9-W, U.S.M.L., Licking Township, Muskingum County, Ohio. Being part of the lands of Crimson King Farms, LLC conveyed in Deed Book 1723 page 47 of the Muskingum county deed records and being described as follows;

Commencing at the Southwest corner of section 5 of Muskingum township; Thence, N.02°00'11"E. a record distance of 44.50 feet along Licking/Muskingum Township line to a point; Thence, N.89°04'21"W. a record distance of 671.48 feet to a wood corner post marking the corner of the lands of Crimson King Farms, LLC (1856/402), BEING THE POINT OF BEGINNING;

Thence, N.89°21'12"W. a distance of **516.52 feet** along the lands, now or formerly owned by J. Wine (708/56&60) to a found iron pin;

Thence, S.00°48'20"W. a distance of **409.52 feet** along said Wine lands to a found iron pin on the North line of the lands, now or formerly owned by D. Stotts (834/48);

Thence, N.88°44'07"W. a distance of **464.59 feet** along said Stotts lands to a set rebar;

Thence, N.03°19'18"E. a distance of **599.47 feet** through the lands of Crimson King Farms to a set rebar, passing a set rebar at 188.62 feet;

Thence, N.12°07'09"E. a distance of **782.65 feet** through the lands of Crimson King Farms to a found iron pin on the Southwest corner of a 1.736 acre parcel owned by Tri-Valley Builders, Inc. (1723/47);

Thence, N.76°26'43"E. a distance of **307.78 feet** along the South line of said Builders lands to a found iron pin;

Thence, N.10°01'22"W. a distance of **235.27 feet** along the East line of said Builders lands to a point in the center of Old Stagecoach Road (T.R. 304), passing a found iron pin at 214.38 feet;

Thence, N.80°23'21"E. a distance of **80.79 feet** along the center of said road to a point;

Thence, N.78°56'32"E. a distance of **81.51 feet** along the center of said road to a point on the Northwest corner of the lands of D. Dunfee (1032/308);

**OFFICE COPY  
NOT RECORDABLE**

Thence, **S.02°02'51"W.** a distance of **326.37 feet** along the West line of said Dunfee lands to a found iron pin;

Thence, **N.88°47'16"E.** a distance of **500.98 feet** along the South line of said Dunfee lands to a found iron pin on the West line of the lands of J. Wine (708/56 & 60);

Thence, **S.02°19'53"W.** a distance of **376.09 feet** along said Wine lands to a wood corner post;

Thence, **S.89°10'30"W.** a distance of **75.48 feet** along said Wine lands to a wood corner post;

Thence, **S.02°41'19"W.** a distance of **611.45 feet** along said Wine lands to The point of beginning.

The above described parcel contains **26.377 acres**, more or less, subject to all legal easements and right of ways. All set rebars are 5/8" x 30" rebars with plastic I.D. caps. North is based upon an assumed meridian.

Description was prepared from an actual survey by Bowman Surveying, Stephen M. Bowman, P.S.#7135. May 21, 2004.

**OFFICE COPY  
NOT RECORDABLE**

DESCRIPTION APPROVED  
FOR AUDIT & TRANSFER  
BY MMB  
5-25-2004

35-10-41-34  
6570 OLD STAGE COACH RD

SURVEY PLAT FOR CRIMSON KING FARMS, LLC

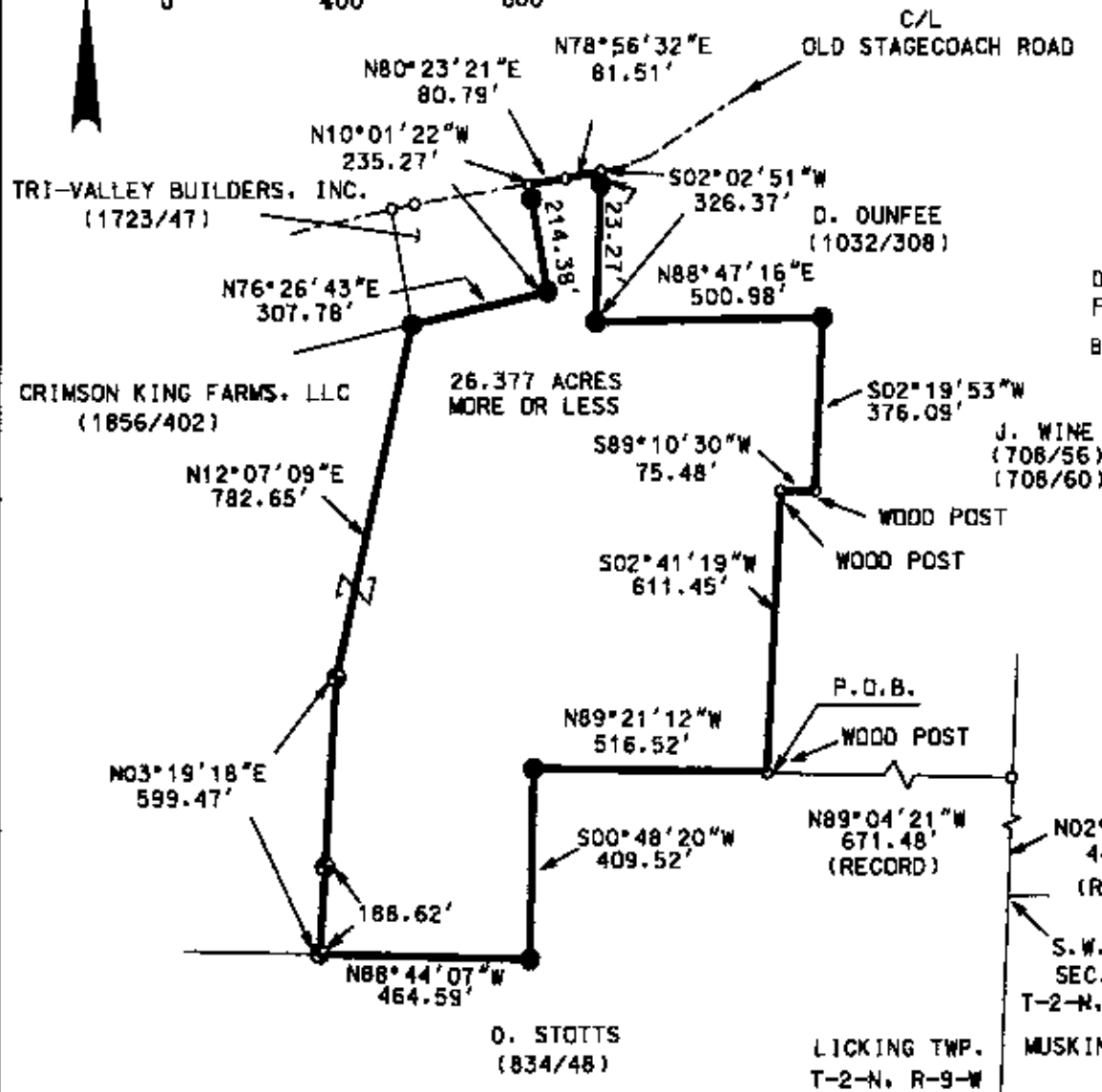
SITUATED IN LOTS 3 AND 4, QUARTER TOWNSHIP 1, T-2-N, R-9-W, U.S.M.L, LICKING TOWNSHIP, MUSKINGUM COUNTY, OHIO.

PART OF AUDITORS PARCEL

35-10-41-34-000

NORTH IS BASED UPON  
AN ASSUMED MERIDIAN

SCALE 1" = 400'



DESCRIPTION APPROVED  
FOR AUDITOR'S TRANSFER  
BY *[Signature]*  
5-25-2004

LEGEND

- IRON PIN FOUND
- ⊕ 3/4" X 30" REBAR SET W/ I.D. CAP
- POINT

I CERTIFY THIS DRAWING WAS PREPARED  
FROM AN ACTUAL FIELD SURVEY I CONDUCTED

**OFFICIAL COPY  
NOT RECORDED**

BOWMAN SURVEYING

38 N. 4th STR., RM 103  
ZANESVILLE, OHIO 43701  
PHONE/FAX 740-454-0496

JOB: M-04190

DATE: 05/21/04