

BASELINE SURVEYING, INC.

3010 East Pike
Zanesville, OH 43701

Telephone (740) 453-4850
Fax (740) 450-1000

WM. G. MOHLER
AUDITORS PARCEL NUMBER 35-35-10-61-18-000 (ALL)

BEING A PART OF LOT 21 IN QUARTER TOWNSHIP 1, TOWNSHIP 2, RANGE 9, OF THE UNITED STATES MILITARY LANDS, LICKING TOWNSHIP, MUSKINGUM COUNTY, OHIO AND BEING FURTHER DESCRIBED AS FOLLOWS:

BEGINNING AT AN EXISTING STONE AT THE SOUTHEAST CORNER OF SAID LOT NUMBER 21;

THENCE WITH THE SOUTH LINE OF LOT 21, NORTH 88 DEGREES 25 MINUTES 43 SECONDS WEST 1121.56 FEET TO A POINT IN THE CENTER OF TOWNSHIP ROAD 120 (GAUSE ROAD), PASSING IRON PINS SET AT 685.24 FEET AND 1091.56 FEET;

THENCE WITH THE CENTER OF THE SAID ROAD THE NEXT ELEVEN COURSES AND DISTANCES:

- 1) NORTH 31 DEGREES 13 MINUTES 50 SECONDS WEST 47.11 FEET TO A POINT;
- 2) NORTH 36 DEGREES 43 MINUTES 20 SECONDS WEST 95.19 FEET TO A POINT;
- 3) NORTH 39 DEGREES 15 MINUTES 10 SECONDS WEST 221.94 FEET TO A POINT;
- 4) NORTH 38 DEGREES 47 MINUTES 19 SECONDS WEST 458.88 FEET TO A POINT;
- 5) NORTH 36 DEGREES 21 MINUTES 01 SECONDS WEST 136.33 FEET TO A POINT;
- 6) NORTH 35 DEGREES 44 MINUTES 41 SECONDS WEST 60.29 FEET TO A POINT;
- 7) NORTH 41 DEGREES 33 MINUTES 45 SECONDS WEST 141.18 FEET TO A POINT;
- 8) NORTH 38 DEGREES 53 MINUTES 13 SECONDS WEST 253.50 FEET TO A POINT;
- 9) NORTH 38 DEGREES 11 MINUTES 26 SECONDS WEST 171.15 FEET TO A POINT;
- 10) NORTH 35 DEGREES 30 MINUTES 35 SECONDS WEST 93.67 FEET TO A POINT;
- 11) NORTH 30 DEGREES 18 MINUTES 14 SECONDS WEST 16.97 FEET TO A POINT;

THENCE LEAVING THE SAID ROAD AND WITH THE SOUTH LINE OF TRACTS CONVEYED TO MARK AND POLLY MCCONAHA (OR 1144, PAGE 622) AND ROGER AND ALICIA SCHULTHEIS (OR 2358, PAGE 477), SOUTH 89 DEGREES 27 MINUTES 09 SECONDS EAST, PASSING EXISTING IRON PINS (5/8 INCH REBAR) AT 17.00 FEET, 577.93 FEET, 884.58 FEET, 1357.48 FEET, AND 1694.76 FEET, A TOTAL DISTANCE OF 2181.16 FEET TO AN EXISTING STONE, SAID STONE BEING SOUTH 55 DEGREES 35 MINUTES 55 SECONDS WEST 1.44 FEET FROM AN EXISTING IRON PIN (3/4 INCH REBAR-BENT);

THENCE WITH THE EAST LINE OF LOT 21, SOUTH 00 DEGREES 33 MINUTES 27 SECONDS WEST 1343.22 FEET TO THE **PLACE OF BEGINNING**.

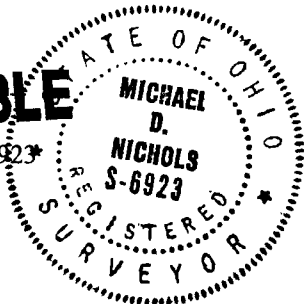
CONTAINING 50.410 ACRES, SUBJECT TO ALL LEGAL ROAD RIGHT-OF-WAY OF TOWNSHIP ROAD 120 (GAUSE ROAD) AND ALL OTHER APPLICABLE EASEMENTS.

ALL IRON PINS SET ARE 5/8 INCH X 30 INCH REBAR WITH PLASTIC IDENTIFICATION CAPS (BIEDENBACH PS5718-PS6923).

THE BEARINGS ARE BASED ON THE PREVIOUS SURVEY OF 27.821 MORE OR LESS ACRES AS COMPLETED BY E. DONAKER P.S.7142 AND DATED JANUARY 1990.

I HEREBY CERTIFY TO THE BEST OF MY KNOWLEDGE AND BELIEF THE SURVEY AND DESCRIPTION TO BE CORRECT AS PREPARED BY ME, THIS 19th DAY OF JULY 2012, FROM A SURVEY COMPLETED BY ME ON THE 15TH DAY OF MAY 1998.

OFFICE COPY
NOT RECORDABLE
MICHAEL D. NICHOLS
REGISTERED SURVEYOR 6923



DESCRIPTION
APPROVED

By: *[Signature]* 7/20/2012

SURVEY FOR WILLIAM MOHLER

AUDITORS PARCEL NUMBER
35-35-10-61-18-000 (ALL)

BEING A PART OF LOT 21 IN QUARTER TOWNSHIP 1, TOWNSHIP 2, RANGE 9, OF THE UNITED STATES MILITARY LANDS, LICKING TOWNSHIP, MUSKINGUM COUNTY, OHIO.

BEARING ARE BASED ON THE PREVIOUS SURVEY OF 27.821 ± ACRES AS COMPLETED BY E. DONAKER P.S.7142 AND DATED JANUARY, 1990.

RESEARCH:

VOL. 602, PG. 114
VOL. 424, PG. 216
VOL. 853, PG. 228
VOL. 1059, PG. 316
VOL. 816, PG. 248
VOL. 646, PG. 111
VOL. 811, PG. 95
VOL. 816, PG. 248
P.B. 979, PG. 274
P.B. 971, PG. 80
P.B. 973, PG. 264
P.B. 668, PG. 84
MUSKINGUM CO. TAX MAP



SCALE 1"=300'
0 150 300 600

WILLIAM G. MOHLER
VOL. 424, PG. 215

CORNER POST

SOUTHEAST CORNER
OF LOT 21

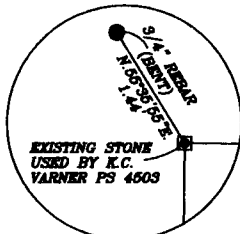
MARY F. WILBURN
VOL. 811, PG. 260

SEE DETAIL "C"

S.00°33'27"W. 1343.22'
(DEED-1353')

DEED 990.00'
MEASURED 992.62'

EAST LINE OF LOT 21



DETAIL "C"
NOT TO SCALE

WILLIAM G. MOHLER
VOL. 424, PG. 215
50.410 ACRES

P.O.B.

SOUTH LINE OF LOT 21

TOTAL

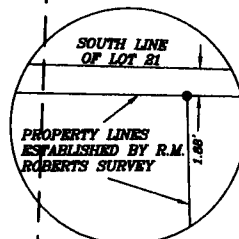
685.24'

N.88°25'43"W. 1121.58'

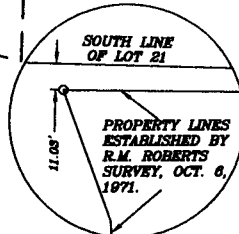
DEED 1072.50'

KURT E. FELL
OR. 2304, PG. 116

KURT E. FELL
OR. 2304, PG. 116



DETAIL "B"
NOT TO SCALE



DETAIL "A"
NOT TO SCALE

NOTE: ORIGINAL DESCRIPTION
DOES NOT CLOSE BY
N.54°51'00"E. 22.91'

LEGEND

- EXISTING IRON PIN
- ⊙ IRON PIN SET
(5/8" REBAR W/CAP)
- ANGLE POINTS
- EXISTING STONE

ROGER & ALICIA SCHULTHEIS
OR. 2358, PG. 477

M. & P. McCONAHA
OR. 1144, PG. 622

LINE ESTABLISHED BY K.C. VARNER SURVEY
(APRIL 17, 1998) OF A SURVEY BY L.P. DINAN
(APRIL 7, 1984) BY DINAN SURVEY DISTANCE
ON THIS LINE WAS 2354.47'

NUMBER	BEARING	DISTANCE
1	N.38°15'10"W.	221.04'
2	N.38°47'19"W.	458.88'
3	N.36°21'01"W.	136.33'
4	N.35°44'41"W.	60.29'
5	N.41°33'45"W.	141.18'
6	N.38°53'13"W.	253.50'
7	N.38°11'26"W.	171.15'
8	N.35°30'35"W.	93.67'
9	N.30°18'14"W.	16.97'

CHARLES & SHAROM
McNAUGHT
OR. 2254, PG. 399

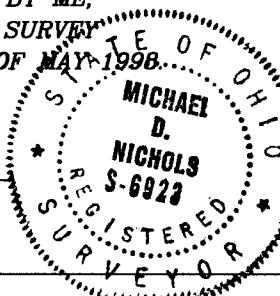
DESCRIPTION

APPROVED

By: *[Signature]* 7/20/12

I HEREBY CERTIFY TO THE BEST OF MY
KNOWLEDGE AND BELIEF THE ABOVE PLAT AND
SURVEY TO BE CORRECT AS PREPARED BY ME,
THIS 19th DAY OF JULY, 2012 FROM A SURVEY
COMPLETED BY ME ON THE 15TH DAY OF MAY, 1998.

OFFICE COPY
NOT RECORDABLE
REGISTERED SURVEYOR #6923



BASELINE SURVEYING INC.
SURVEYING & MAPPING
ZANESVILLE, OHIO
(740) 453-4850

DRAWN BY: AJS--REV. MDN	DATE: REV. 7/19/12 05-15-98
SCALE: 1"=300'	CHECKED BY: MDN
JOB NO: 4288	DRAWING NO: D:\4288\4288