

BOWMAN SURVEYING
38 N. 4th Street, Rm. 103
Zanesville, Ohio 43701
PH. (740) 454-0496

SURVEY DESCRIPTION
FOR
Crimson King Farms

PART OF AUDITORS PARCEL

35-10-71-05-000 (20.14 Acres) *SNL*
35-10-41-29-000 (0.01 Acres)

Situated in Lots 6 and 7 of Roberts survey, Quarter Township 1, T-2-N, R-9-W, U.S.M.L., Licking Township, Muskingum County, Ohio.

Beginning at a found iron pin marking the Southwest corner of lot 19 of Stagecoach Pass, Phase 1, (P.B. 18, Pg. 122);

- Thence, **S.87°27'14"E.** a distance of **312.95** feet along the South lines of lots 19 and 18 to a found iron pin on the Southeast corner of lot 18;
- Thence, **N.35°08'33"E.** a distance of **309.31** feet along the East line of said lot 18 to a point in the center of Old Stagecoach Road, passing a found iron pin at 267.71';
- Thence, **N.81°17'31"E.** a distance of **13.65** feet along the center of said road to a point;
- Thence, **N.48°04'22"E.** a distance of **29.40** feet along the center of said road to a point;
- Thence, **S.13°06'52"W.** a distance of **1,249.12** feet through the lands of Crimson King Farms, LLC, (1856/402) to a set rebar, passing a set rebar at 50.00';
- Thence, **N.76°28'28"W.** a distance of **897.85** feet through the lands of Crimson King Farms, LLC, (1856/402) to a set rebar;
- Thence, **N.00°08'23"W.** a distance of **583.15** feet through the lands of Crimson King Farms, LLC, (1856/402) and along the East line of the lands, now or formerly, owned by P. Dunfee (1706/219) to a point in the center of Old Stagecoach Road, passing found iron pin at 75.00' and 563.59';
- Thence, **N.79°15'08"E.** a distance of **115.07** feet along the center of Old Stagecoach Road to a point;
- Thence, **N.61°04'02"E.** a distance of **156.20** feet along the center of Old Stagecoach Road to a point;

Thence, **N.46°48'01"E.** a distance of **362.72** feet along the center of Old Stagecoach Road to a point;

Thence, **N.59°34'33"E.** a distance of **83.31** feet along the center of Old Stagecoach Road to a point;

Thence, **N.75°29'50"E.** a distance of **47.73** feet along the center of Old Stagecoach Road to a point on the Northwest corner of lot 19 of Stagecoach Pass, Phase 1;

Thence, **S.00°06'58"W.** a distance of **236.81** feet along the West line of Lot 19 to the point of beginning, passing a found iron pin at 32.00';

The above described parcel contains 20.15 acres, more or less and is subject to all legal easements and right of ways. All set rebars are 5/8" x 30" rebars with plastic I.D. caps. North is based upon an assumed meridian.

Description was prepared from an actual field survey by Bowman Surveying, Stephen M. Bowman, P.S.#7135. December 19, 2006.

APPROVED FOR CLOSURE

[Signature] 1/3/2007

EXEMPT FROM
PLANNING COMMISSION

[Signature] 1/3/2007

**OFFICE COPY
NOT RECORDABLE**

6960 OLD STAGECOACH ROAD
NORTH IS BASED UPON
AN ASSUMED MERIDIAN
SCALE 1" = 300'



SURVEY PLAT FOR CRIMSON KING FARMS, LLC
SITUATED IN LOTS 6 AND 7 OF ROBERTS SURVEY, QUARTER TOWNSHIP 1, T-2-N,
R-9-W, U.S.M.L., LICKING TOWNSHIP, MUSKINGUM COUNTY, OHIO.

PART OF AUDITORS PARCELS
35-10-71-05-000 (20.14 ACRES)
35-10-41-29-000 (0.01 ACRES)

1/13/2007

1/13/2007

EXEMPT FROM
PLANNING COMMISSION

1/13/2007

LEGEND

- IRON PIN FOUND
- ⊙ 3/4" X 30" REBAR SET
W/ I.D. CAP
- POINT

I CERTIFY THIS DRAWING WAS PREPARED
FROM AN ACTUAL FIELD SURVEY CONDUCTED

OFFICE COPY
NOT RECORDABLE

BOWMAN SURVEYING

38 N. 4th STR., RM 103
ZANESVILLE, OHIO 43701
PHONE/FAX 740-454-0496

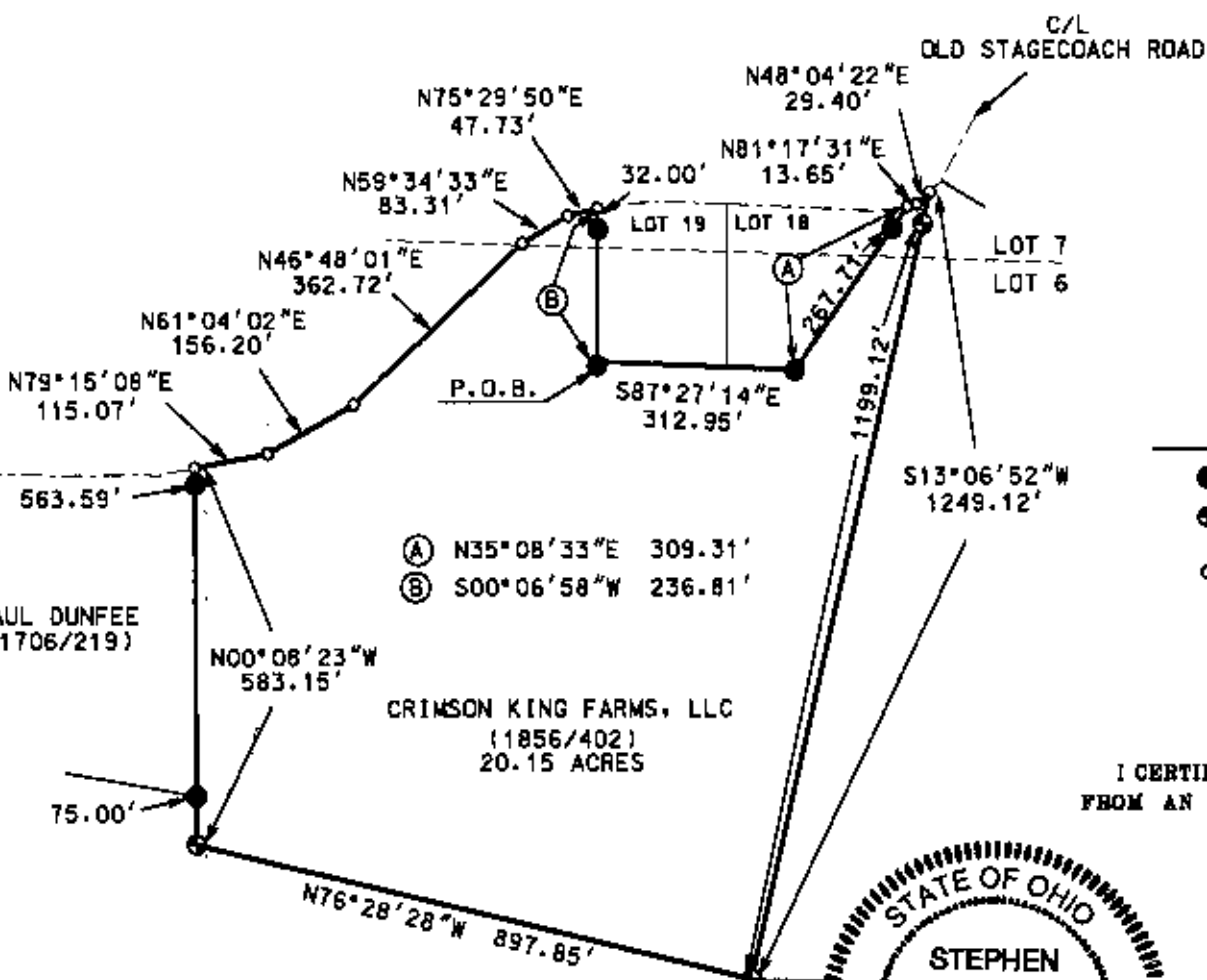
JOB: M-064390

DATE: 12/19/06



CRIMSON KING FARMS, LLC
(1856/402)
20.15 ACRES

- (A) N35°08'33"E 309.31'
- (B) S00°06'58"W 236.81'



P.O.B.
S.W. COR. LOT 19 OF
STAGECOACH PASS, PHASE 1
(P.B. 16, PG. 122)