

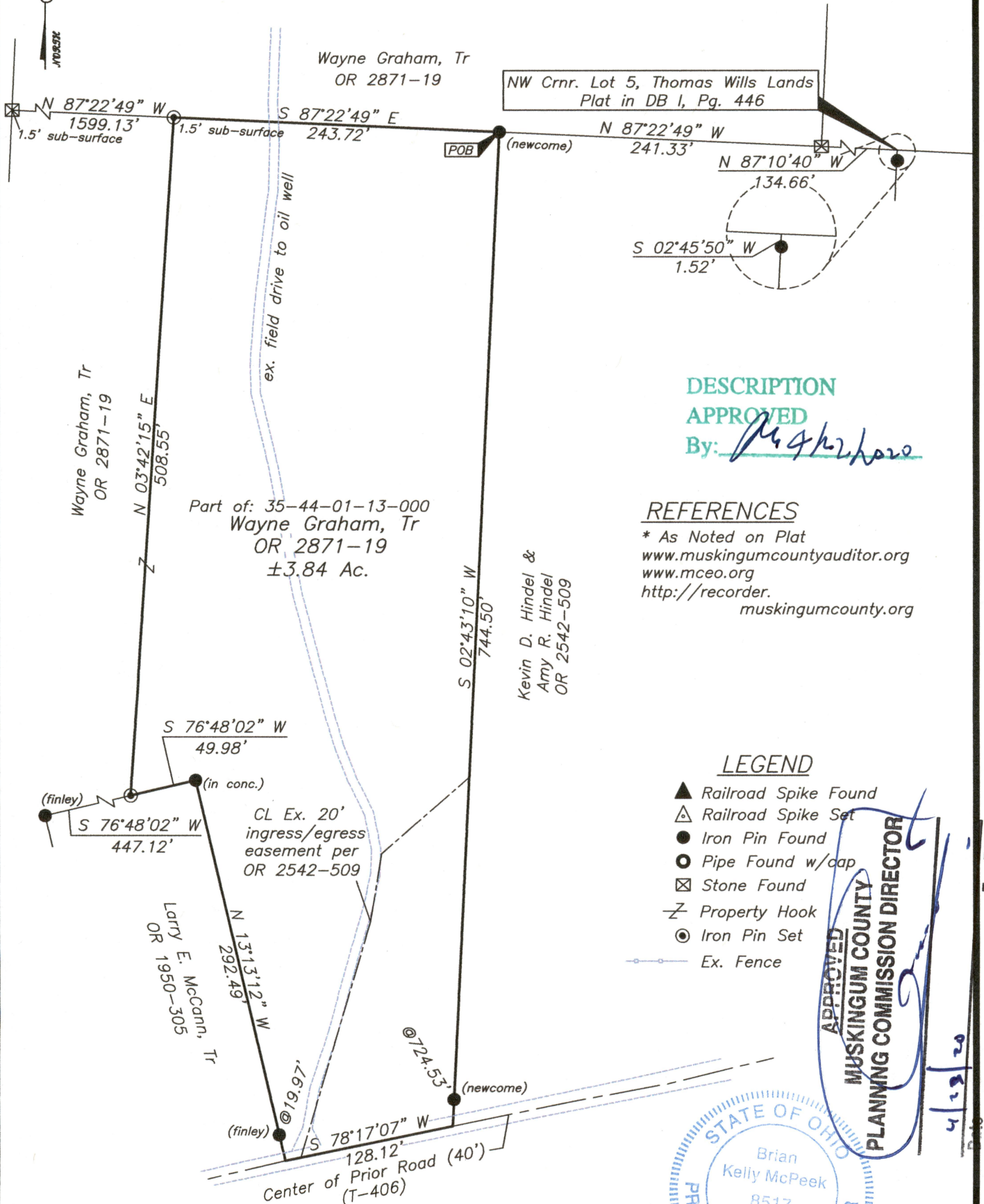
SITUATED IN

The State of Ohio, County of Muskingum
Township of Licking, and being a part
of Qtr. Twp. 4, T2, R9, USML.

Survey Split

BASIS OF BEARING

Bearings are based on State Plane Grid Coordinates,
NAD83, Ohio South, per GPS Observation.



DESCRIPTION

APPROVED

By: *[Signature]*

REFERENCES

* As Noted on Plat
www.muskingumcountyauditor.org
www.mceo.org
<http://recorder.muskingumcounty.org>

LEGEND

- ▲ Railroad Spike Found
- △ Railroad Spike Set
- Iron Pin Found
- Pipe Found w/cap
- ⊠ Stone Found
- ⌵ Property Hook
- ⊙ Iron Pin Set
- Ex. Fence

ADJOINER STATEMENT

Not to be used as a separate building
site or transferred as an independent
parcel in the future without planning
commission approval in accordance with
applicable subdivision regulations.

Graphic Scale



(IN FEET)

1 inch = 100 ft.

OFFICE COPY
NOT RECORDABLE
Brian Kelly McPeck
Reg. Surveyor No. 8517
Date 4/21/20

**MCPEEK
LAND
SURVEYING**
LLC
www.mcpeeklandsurveying.com
email: brian@mcpeeklandsurveying.com
340 Robin Hood Ln., * Zanesville, Oh 43701 * 740.704.6073

Fee Paid