

38-60-01-68-001
36-60-02-26
38-60-02-24
N/A

**BOWMAN & ASSOCIATES
59 SECOND STREET
FRAZEYSBURG, OHIO 43822
PH./FAX (614) 828-2204**

**SURVEY DESCRIPTION
FOR
WILLIAM ARCHIBALD
PARCEL 6**

1 of 2 pages

PART OF PARCEL

#38-60-01-03-000 (1.552 Acres)
#38-60-01-08-000 (6.197 Acres)
#38-60-02-24-000 (2.870 Acres)
#38-60-02-~~24~~-000 (6.395 Acres)
26

Situated in Quarter Township 1 and 2, T-2-N, R-7-W, U.S.M.L., Madison Township, Muskingum County, Ohio. Being part of lands of William Archibald as conveyed in deed book 535 page 716 of the Muskingum County deed records and being described as follows:

Commencing at the Northwest corner of Quarter Township #1; thence, S.00°15'46"W. a calculated distance of 1,112.03 feet along the West line of said Quarter Township to a point on the south line of the lands, now or formerly, owned by R. Mohler (1042/287), **BEING THE POINT OF BEGINNING;**

thence, N.71°21'25"E. a distance of 577.00 feet along the south line of said Mohler lands to a point in the center of County Road 40, passing a set rebar at 188.98 feet and 544.17 feet;

thence, S.31°31'51"E. a distance of 108.29 feet along the centerline of said road to a point in the intersection of C.R. 40 and C.R. 155;

thence, S.34°28'25"W. a distance of 95.24 feet along the centerline of C.R. 155 to a point;

thence, S.17°50'04"W. a distance of 97.68 feet along the centerline of said road to a point;

thence, S.18°02'03"W. a distance of 196.79 feet along the centerline of said road to a point;

thence, S.23°36'32"W. a distance of 215.68 feet along the centerline of said road to a point;

thence, S.31°47'50"W. a distance of 214.90 feet along the centerline of said road to a point;

thence, S.38°45'28"W. a distance of 62.32 feet along the centerline of said road to a point;

thence, N.80°43'45"W. a distance of 625.36 feet through the lands of W. Archibald (535/716) to a set rebar, passing a set rebar at 22.16 feet;

- thence, N.87°40'32"W. a distance of 89.08 feet through said Archibald lands to a set rebar;
- thence, S.52°02'39"W. a distance of 77.60 feet through said Archibald lands to a set rebar;
- thence, N.56°12'36"W. a distance of 189.89 feet through said Archibald lands to a set rebar;
- thence, S.63°51'03"W. a distance of 77.26 feet through said Archibald lands to a set rebar on the East line of the lands, now or formerly, owned by Muskingum Mining Co.;
- thence, N.00°10'21"W. a distance of 516.77 feet along said Mining lands to a set rebar on the Southwest corner of the lands of R. Mohler (1042/287);
- thence, S.73°50'58"E. a distance of 351.12 feet along said Mohler lands to a set rebar;
- thence, N.71°21'25"E. a distance of 463.17 feet along said Mohler lands to a the point of beginning.

The above described parcel contains 17.014 acres, more or less, (7.749 acres in quarter Township 1 and 9.265 acres in quarter township 2) and is subject to all legal easements and right of ways. All set iron pipes are 5/8" x 30" rebars. North is based upon an assumed meridian.

Subject to the following 60 foot wide right of way, being described as follows;

Commencing at the Northwest corner of Quarter Township #1; thence, S.00°15'46"W. a calculated distance of 1,770.98 feet along the West line of said Quarter Township to a point; thence, N.80°43'45"W. a distance of 339.40 feet through the lands of W. Archibald (535/716) to a point, being the point of beginning of the attached 60 right of way, The attached right of way is located perpendicular to and on the right of the following described line;

- thence, N.80°43'45"W. a distance of 60.00 feet through said Archibald lands to a set rebar;
- thence, N.87°40'32"W. a distance of 89.08 feet through said Archibald lands to a set rebar;
- thence, S.52°02'39"W. a distance of 77.60 feet through said Archibald lands to a set rebar;
- thence, N.56°12'36"W. a distance of 189.89 feet through said Archibald lands to a set rebar, being the terminus point of this right of way.

Description was prepared from an actual survey by Bowman & Associates, Stephen M. Bowman, P.S.#7135. December 7, 1996

**OFFICE COPY
NOT RECORDABLE**

DESCRIPTION APPROVED
FOR AUDITORS TRANSFER

BY 12-17-98

NORTH IS BASED UPON
AN ASSUMED MERIDIAN

SCALE 1" = 250'



**PARCEL 8
PART OF PARCEL**

- *38-60-01-09-000 (1.552 ACRES)
- *38-60-01-08-000 (6.197 ACRES)
- *38-60-02-24-000 (2.870 ACRES)
- *38-60-02-25-000 (6.805 ACRES)

25

DESCRIPTION APPROVED
FOR AUDITOR'S TRANSFER

BY *[Signature]*
12-17-96

MUSKINGUM MINING

PERTINENT DOCUMENTS

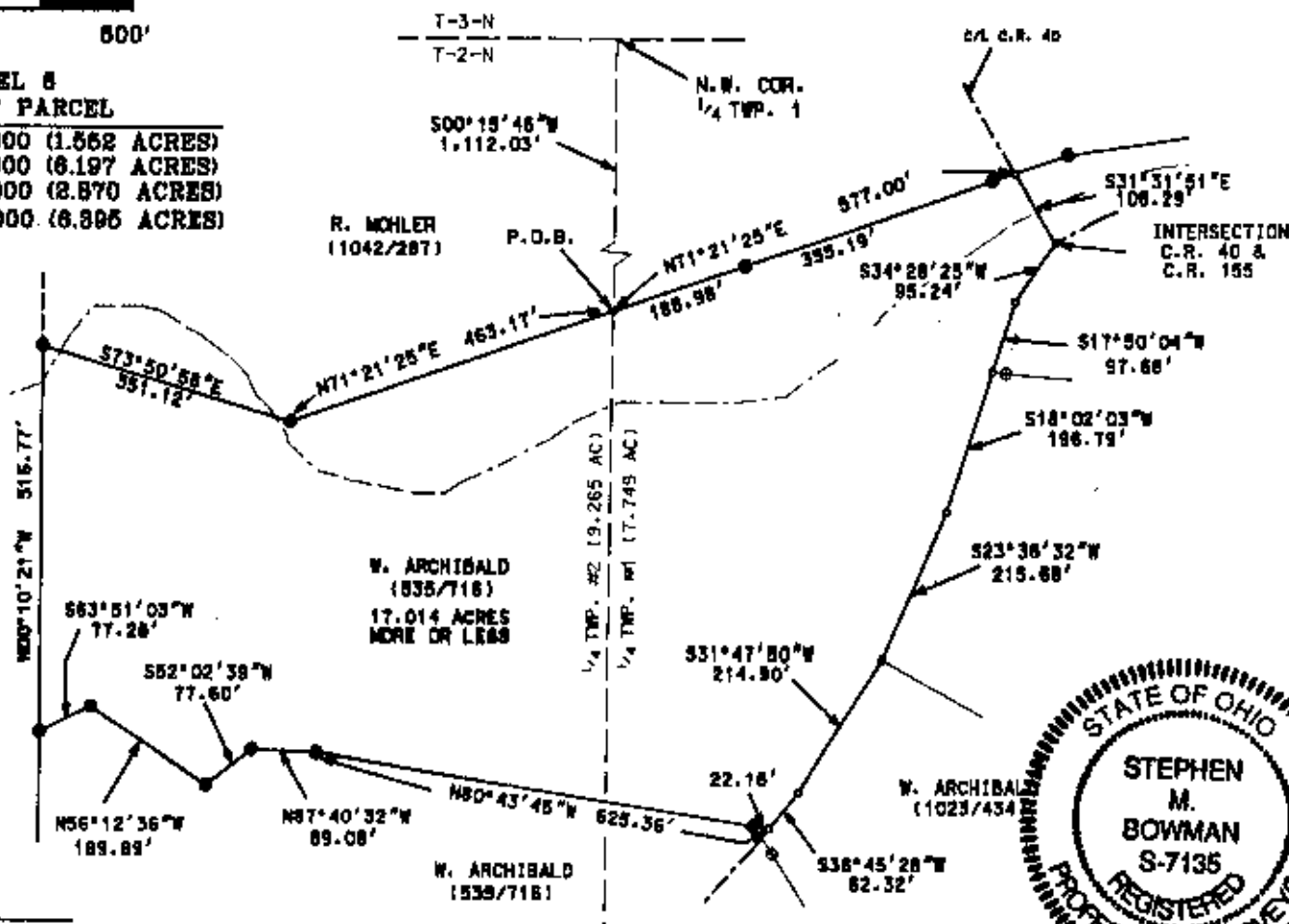
DEEDS AS SHOWN.

LEGEND

- IRON PIN FOUND
- ⊙ 3/8" X 30" REBAR SET
W/ I.D. CAP
- POINT

SURVEY PLAT FOR WILLIAM ARCHIBALD

SITUATED IN QUARTER TOWNSHIP 1 & 2, T-2-N, R-7-W, U.S.M.L.,
MADISON TOWNSHIP, MUSKINGUM COUNTY, OHIO, BEING PART OF
LANDS OF WILLIAM ARCHIBALD AS CONVEYED IN DEED BOOK 696
PAGE 716 OF THE MUSKINGUM COUNTY DEED RECORDS.



I CERTIFY THIS DRAWING WAS PREPARED
FROM A FIELD SURVEY I CONDUCTED
ON DECEMBER 10, 1996

**OFFICE COPY
NOT RECORDABLE**

STEPHEN M. BOWMAN, P.S. #7135

BOWMAN & ASSOCIATES

59 SECOND STREET
FRAZEYSBURG, OHIO 43822
PHONE/FAX 614-828-2204

JOB: M-9606D

DATE: 12/07/96