

TERRY J. FINLEY SURVEYING & MAPPING**155 Mockingbird Hill, Zanesville, OH 43701****Phone or FAX (740) 454-8721****Ohio Registered Surveyor #S-7222****LEGAL DESCRIPTION - ROBERT MITCHELL PROPERTY**

SITUATED IN THE STATE OF OHIO, COUNTY OF MUSKINGUM, TOWNSHIP OF MEIOS, AND BEING PART OF SECTION 18, TOWNSHIP 12, RANGE 11, AND PART OF THE SOUTHEAST QUARTER OF SECTION 7, TOWNSHIP 12, RANGE 11, AND BEING ALL THOSE LANDS INTENDED TO BE DESCRIBED IN DEED VOLUME 651, PAGE 251; BEING FURTHER BOUNDED AND DESCRIBED AS FOLLOWS:

BEGINNING AT THE SOUTHWEST CORNER OF THE SOUTHEAST QUARTER OF SECTION 18, THENCE, SOUTH 86 DEGREES - 56 MINUTES - 02 SECONDS WEST, 229.28 FEET TO AN IRON PIN SET;

THENCE, NORTH 04 DEGREES - 42 MINUTES - 45 SECONDS WEST, 1009.96 FEET TO AN IRON PIN SET;

THENCE, SOUTH 86 DEGREES - 51 MINUTES - 10 SECONDS WEST, 338.72 FEET TO A SIX (6) INCH POST, PASSING AN IRON PIN SET AT 332.72 FEET;

THENCE, ALONG AN EXISTING FENCE LINE, NORTH 06 DEGREES - 54 MINUTES - 07 SECONDS WEST, 1653.94 FEET TO A SIX (6) INCH POST;

THENCE, SOUTH 86 DEGREES - 44 MINUTES - 28 SECONDS WEST, 392.28 FEET TO A POINT IN THE CENTER OF FENTON ROAD (T. 233), PASSING IRON PINS SET AT 1.00 FEET AND 344.95 FEET;

THENCE, ALONG THE CENTERLINE OF SAID ROAD, THE FOLLOWING NINETEEN (19) COURSES AND DISTANCES:

1. NORTH 14 DEGREES - 02 MINUTES - 12 SECONDS EAST, 5.62 FEET TO A POINT;
2. NORTH 01 DEGREES - 30 MINUTES - 19 SECONDS EAST, 552.77 FEET TO A POINT;
3. NORTH 13 DEGREES - 58 MINUTES - 24 SECONDS WEST, 181.79 FEET TO A POINT;
4. NORTH 22 DEGREES - 12 MINUTES - 24 SECONDS WEST, 192.46 FEET TO A POINT;
5. NORTH 22 DEGREES - 37 MINUTES - 53 SECONDS WEST, 202.22 FEET TO A POINT;
6. NORTH 14 DEGREES - 47 MINUTES - 59 SECONDS WEST, 89.46 FEET TO A POINT;
7. NORTH 06 DEGREES - 34 MINUTES - 01 SECONDS WEST, 225.65 FEET TO A POINT;
8. NORTH 07 DEGREES - 20 MINUTES - 57 SECONDS WEST, 536.00 FEET TO A POINT;
9. NORTH 69 DEGREES - 27 MINUTES - 24 SECONDS EAST, 40.54 FEET TO A POINT;
10. NORTH 73 DEGREES - 14 MINUTES - 29 SECONDS EAST, 120.09 FEET TO A POINT;
11. NORTH 64 DEGREES - 12 MINUTES - 09 SECONDS EAST, 64.83 FEET TO A POINT;
12. NORTH 47 DEGREES - 10 MINUTES - 44 SECONDS EAST, 41.72 FEET TO A POINT;
13. NORTH 32 DEGREES - 39 MINUTES - 47 SECONDS EAST, 25.24 FEET TO A POINT;
14. NORTH 23 DEGREES - 31 MINUTES - 35 SECONDS EAST, 44.05 FEET TO A POINT;
15. NORTH 10 DEGREES - 31 MINUTES - 27 SECONDS EAST, 126.29 FEET TO A POINT;
16. NORTH 08 DEGREES - 10 MINUTES - 19 SECONDS WEST, 98.69 FEET TO A POINT;
17. NORTH 18 DEGREES - 46 MINUTES - 49 SECONDS WEST, 155.69 FEET TO A POINT;
18. NORTH 07 DEGREES - 18 MINUTES - 38 SECONDS WEST, 167.59 FEET TO A POINT;
19. NORTH 06 DEGREES - 46 MINUTES - 00 SECONDS EAST, 24.60 FEET TO A POINT;

THENCE, LEAVING SAID ROAD, NORTH 84 DEGREES - 47 MINUTES - 58 SECONDS EAST, 811.65 FEET TO AN IRON PIN SET ON THE EAST SIDE OF OTIS LANE, PASSING AN IRON PIN SET AT 17.06 FEET;

THENCE, NORTH 05 DEGREES - 30 MINUTES - 17 SECONDS WEST, 311.31 FEET TO A POINT IN THE CENTER OF BLUE ROCK CHURCH ROAD (T. 226), PASSING AN IRON PIN SET AT 289.47 FEET;

THENCE, ALONG SAID ROAD, THE FOLLOWING THIRTY-FOUR (34) COURSES AND DISTANCES:

1. NORTH 55 DEGREES - 42 MINUTES - 35 SECONDS EAST, 60.04 FEET TO A POINT;
2. NORTH 64 DEGREES - 29 MINUTES - 27 SECONDS EAST, 92.28 FEET TO A POINT;
3. NORTH 81 DEGREES - 28 MINUTES - 49 SECONDS EAST, 89.17 FEET TO A POINT;
4. SOUTH 81 DEGREES - 15 MINUTES - 36 SECONDS EAST, 96.13 FEET TO A POINT;
5. SOUTH 68 DEGREES - 30 MINUTES - 38 SECONDS EAST, 46.44 FEET TO A POINT;
6. SOUTH 60 DEGREES - 01 MINUTES - 38 SECONDS EAST, 135.76 FEET TO A POINT;
7. SOUTH 47 DEGREES - 13 MINUTES - 49 SECONDS EAST, 114.66 FEET TO A POINT;

8. SOUTH 35 DEGREES - 22 MINUTES - 25 SECONDS EAST, 79.92 FEET TO A POINT;
9. SOUTH 25 DEGREES - 05 MINUTES - 43 SECONDS EAST, 68.97 FEET TO A POINT;
10. SOUTH 24 DEGREES - 00 MINUTES - 47 SECONDS EAST, 180.94 FEET TO A POINT;
11. SOUTH 32 DEGREES - 41 MINUTES - 29 SECONDS EAST, 128.75 FEET TO A POINT;
12. SOUTH 38 DEGREES - 28 MINUTES - 10 SECONDS EAST, 100.79 FEET TO A POINT;
13. SOUTH 44 DEGREES - 17 MINUTES - 45 SECONDS EAST, 74.24 FEET TO A POINT;
14. SOUTH 49 DEGREES - 24 MINUTES - 50 SECONDS EAST, 300.48 FEET TO A POINT;
15. SOUTH 40 DEGREES - 34 MINUTES - 39 SECONDS EAST, 76.80 FEET TO A POINT;
16. SOUTH 32 DEGREES - 20 MINUTES - 08 SECONDS EAST, 53.20 FEET TO A POINT;
17. SOUTH 26 DEGREES - 35 MINUTES - 12 SECONDS EAST, 43.18 FEET TO A POINT;
18. SOUTH 20 DEGREES - 16 MINUTES - 31 SECONDS EAST, 75.40 FEET TO A POINT;
19. SOUTH 12 DEGREES - 24 MINUTES - 37 SECONDS EAST, 129.07 FEET TO A POINT;
20. SOUTH 09 DEGREES - 14 MINUTES - 09 SECONDS EAST, 188.32 FEET TO A POINT;
21. SOUTH 16 DEGREES - 37 MINUTES - 17 SECONDS EAST, 86.41 FEET TO A POINT;
22. SOUTH 25 DEGREES - 15 MINUTES - 31 SECONDS EAST, 66.26 FEET TO A POINT;
23. SOUTH 34 DEGREES - 09 MINUTES - 37 SECONDS EAST, 119.35 FEET TO A POINT;
24. SOUTH 38 DEGREES - 43 MINUTES - 31 SECONDS EAST, 262.90 FEET TO A POINT;
25. SOUTH 31 DEGREES - 42 MINUTES - 37 SECONDS EAST, 182.43 FEET TO A POINT;
26. SOUTH 28 DEGREES - 22 MINUTES - 13 SECONDS EAST, 84.90 FEET TO A POINT;
27. SOUTH 15 DEGREES - 47 MINUTES - 43 SECONDS EAST, 38.73 FEET TO A POINT;
28. SOUTH 02 DEGREES - 03 MINUTES - 03 SECONDS EAST, 93.34 FEET TO A POINT;
29. SOUTH 05 DEGREES - 01 MINUTES - 04 SECONDS WEST, 179.71 FEET TO A POINT;
30. SOUTH 01 DEGREES - 35 MINUTES - 55 SECONDS WEST, 151.69 FEET TO A POINT;
31. SOUTH 05 DEGREES - 13 MINUTES - 27 SECONDS EAST, 302.78 FEET TO A POINT;
32. SOUTH 11 DEGREES - 23 MINUTES - 17 SECONDS EAST, 35.88 FEET TO A POINT;
33. SOUTH 24 DEGREES - 28 MINUTES - 52 SECONDS EAST, 91.34 FEET TO A POINT;
34. SOUTH 33 DEGREES - 47 MINUTES - 00 SECONDS EAST, 225.96 FEET TO A POINT;

THENCE, LEAVING SAID ROAD, SOUTH 00 DEGREES - 07 MINUTES - 40 SECONDS EAST, 2484.25 FEET TO AN IRON PIN SET, PASSING AN IRON PIN SET AT 53.81 FEET;

THENCE, SOUTH 86 DEGREES - 56 MINUTES - 02 SECONDS WEST, 1380.41 FEET TO THE POINT OF BEGINNING, AND CONTAINING 258.7447 ACRES MORE OR LESS, OF WHICH -

4.2643 ACRES LIES IN THE SOUTHEAST QUARTER OF SECTION 7, &
254.4804 ACRES LIES IN SECTION 18.

SUBJECT TO ALL LEGAL HIGHWAYS AND EASEMENTS OF RECORD, WHETHER RECORDED OR IMPLIED.

BEARINGS DESCRIBED HEREIN ARE BASED UPON ASSUMED AZIMUTH AND TO BE USED FOR ANGLE PURPOSES ONLY.

IRON PINS SET ARE 5/8" REBAR WITH YELLOW IDENTIFICATION CAP (FINLEY S-7222).

BEING ALL OF AUDITOR'S PARCEL #40-01-07-08-000
ALL OF AUDITOR'S PARCEL #40-40-18-02-000
ALL OF AUDITOR'S PARCEL #40-40-18-03-000
ALL OF AUDITOR'S PARCEL #40-40-18-10-000
ALL OF AUDITOR'S PARCEL #40-40-18-11-000
ALL OF AUDITOR'S PARCEL #40-40-18-12-000

THIS DESCRIPTION, WRITTEN ON NOVEMBER 30, 2001, IS BASED ON AN ACTUAL SURVEY OF THE PREMISES BY TERRY J. FINLEY, OHIO REGISTERED SURVEYOR #S-7222.

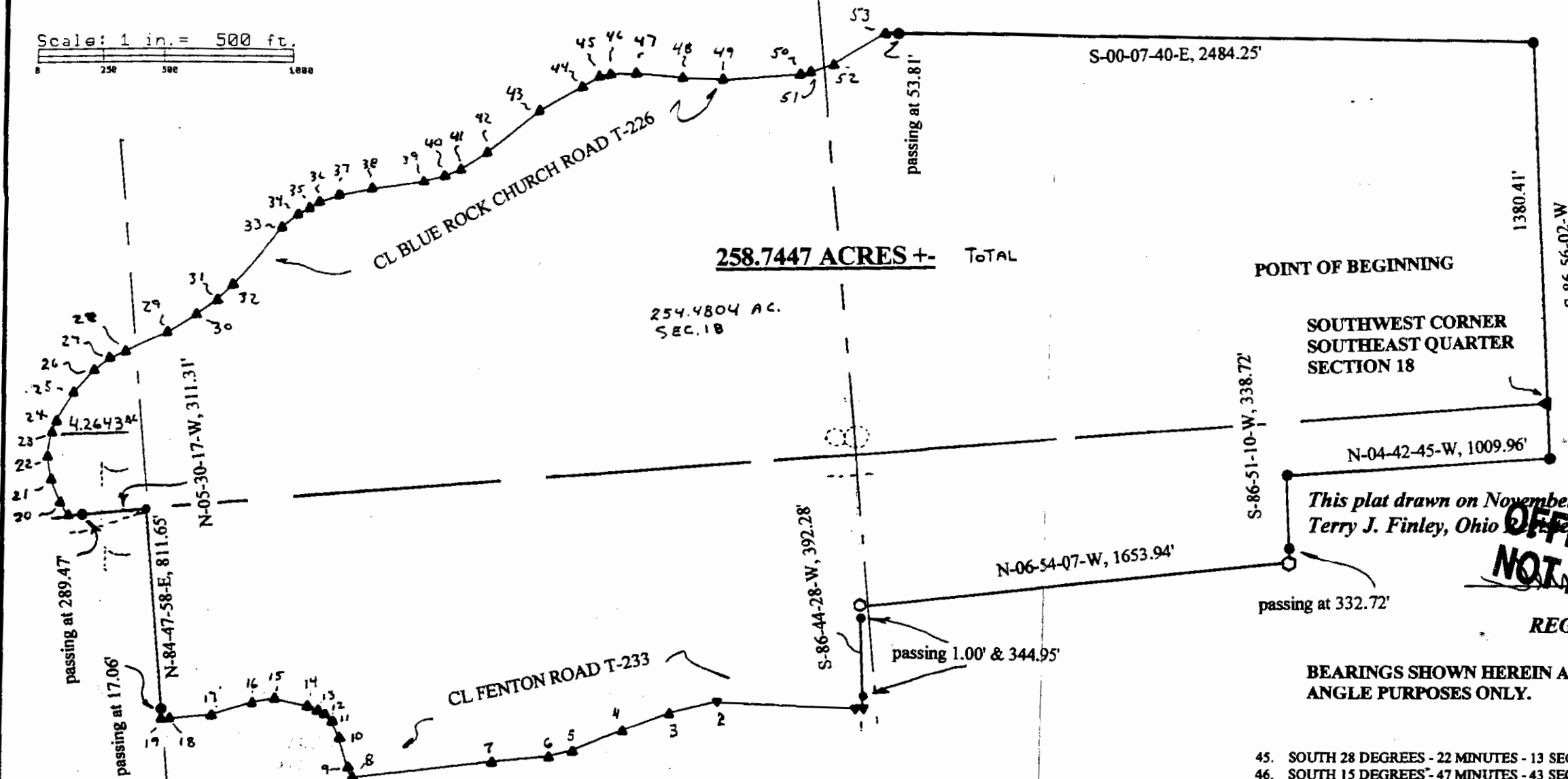
OFFICE COPY
NOT RECORDABLE
REGISTERED SURVEYOR #S-7222

DESCRIPTION APPROVED
FOR AUDITOR'S TRANSFER
BY *[Signature]*
12-3-2001

STATE OF OHIO
COUNTY OF MUSKINGUM
TOWNSHIP OF MEIGS

BEING PART OF SECTION 18, TOWNSHIP 12, RANGE 11,
AND PART OF THE SOUTHEAST QUARTER OF SECTION 7,
TOWNSHIP 12, RANGE 11 DEED VOLUME 651, PAGE 251

Scale: 1 in. = 500 ft.
0 250 500 1000



Auditors Parcel #: 40-01-07-08-000 (all)
40-40-18-02-000 (all)
40-40-18-03-000 (all)
40-40-18-10-000 (all)
40-40-18-11-000 (all)
40-40-18-12-000 (all)

DESCRIPTION APPROVED
FOR AUDITOR'S TRANSFER
BY *[Signature]*
12-3-001

This plat drawn on November 30, 2001 is based on an actual survey of the premises by
Terry J. Finley, Ohio Registered Surveyor #S-7222.

OFFICE COPY
NOT RECORDABLE
REGISTERED SURVEYOR #S-7222

BEARINGS SHOWN HEREIN ARE BASED ON ASSUMED AZIMUTH AND TO BE USED FOR
ANGLE PURPOSES ONLY.

1. NORTH 14 DEGREES - 02 MINUTES - 12 SECONDS EAST, 5.62 FEET TO A POINT;
2. NORTH 01 DEGREES - 30 MINUTES - 19 SECONDS EAST, 552.77 FEET TO A POINT;
3. NORTH 13 DEGREES - 58 MINUTES - 24 SECONDS WEST, 181.79 FEET TO A POINT;
4. NORTH 22 DEGREES - 12 MINUTES - 24 SECONDS WEST, 192.46 FEET TO A POINT;
5. NORTH 22 DEGREES - 37 MINUTES - 53 SECONDS WEST, 202.22 FEET TO A POINT;
6. NORTH 14 DEGREES - 47 MINUTES - 59 SECONDS WEST, 89.46 FEET TO A POINT;
7. NORTH 06 DEGREES - 34 MINUTES - 01 SECONDS WEST, 225.65 FEET TO A POINT;
8. NORTH 07 DEGREES - 20 MINUTES - 57 SECONDS WEST, 536.00 FEET TO A POINT;
9. NORTH 69 DEGREES - 27 MINUTES - 24 SECONDS EAST, 40.54 FEET TO A POINT;
10. NORTH 73 DEGREES - 14 MINUTES - 29 SECONDS EAST, 120.09 FEET TO A POINT;
11. NORTH 64 DEGREES - 12 MINUTES - 09 SECONDS EAST, 64.83 FEET TO A POINT;
12. NORTH 47 DEGREES - 10 MINUTES - 44 SECONDS EAST, 41.72 FEET TO A POINT;
13. NORTH 32 DEGREES - 39 MINUTES - 47 SECONDS EAST, 25.24 FEET TO A POINT;
14. NORTH 23 DEGREES - 31 MINUTES - 35 SECONDS EAST, 44.05 FEET TO A POINT;
15. NORTH 10 DEGREES - 31 MINUTES - 27 SECONDS EAST, 126.29 FEET TO A POINT;
16. NORTH 08 DEGREES - 10 MINUTES - 19 SECONDS WEST, 98.69 FEET TO A POINT;
17. NORTH 18 DEGREES - 46 MINUTES - 49 SECONDS WEST, 155.69 FEET TO A POINT;
18. NORTH 07 DEGREES - 18 MINUTES - 38 SECONDS WEST, 167.59 FEET TO A POINT;
19. NORTH 06 DEGREES - 46 MINUTES - 00 SECONDS EAST, 24.60 FEET TO A POINT;
20. NORTH 55 DEGREES - 42 MINUTES - 35 SECONDS EAST, 60.04 FEET TO A POINT;
21. NORTH 64 DEGREES - 29 MINUTES - 27 SECONDS EAST, 92.28 FEET TO A POINT;
22. NORTH 81 DEGREES - 28 MINUTES - 49 SECONDS EAST, 89.17 FEET TO A POINT;

23. SOUTH 81 DEGREES - 15 MINUTES - 36 SECONDS EAST, 96.13 FEET TO A POINT;
24. SOUTH 68 DEGREES - 30 MINUTES - 38 SECONDS EAST, 46.44 FEET TO A POINT;
25. SOUTH 60 DEGREES - 01 MINUTES - 38 SECONDS EAST, 135.76 FEET TO A POINT;
26. SOUTH 47 DEGREES - 13 MINUTES - 49 SECONDS EAST, 114.66 FEET TO A POINT;
27. SOUTH 35 DEGREES - 22 MINUTES - 25 SECONDS EAST, 79.92 FEET TO A POINT;
28. SOUTH 25 DEGREES - 05 MINUTES - 43 SECONDS EAST, 68.97 FEET TO A POINT;
29. SOUTH 24 DEGREES - 00 MINUTES - 47 SECONDS EAST, 180.94 FEET TO A POINT;
30. SOUTH 32 DEGREES - 41 MINUTES - 29 SECONDS EAST, 128.75 FEET TO A POINT;
31. SOUTH 38 DEGREES - 28 MINUTES - 10 SECONDS EAST, 100.79 FEET TO A POINT;
32. SOUTH 44 DEGREES - 17 MINUTES - 45 SECONDS EAST, 74.24 FEET TO A POINT;
33. SOUTH 49 DEGREES - 24 MINUTES - 50 SECONDS EAST, 300.48 FEET TO A POINT;
34. SOUTH 40 DEGREES - 34 MINUTES - 39 SECONDS EAST, 76.80 FEET TO A POINT;
35. SOUTH 32 DEGREES - 20 MINUTES - 08 SECONDS EAST, 53.20 FEET TO A POINT;
36. SOUTH 26 DEGREES - 35 MINUTES - 12 SECONDS EAST, 43.18 FEET TO A POINT;
37. SOUTH 20 DEGREES - 16 MINUTES - 31 SECONDS EAST, 75.40 FEET TO A POINT;
38. SOUTH 12 DEGREES - 24 MINUTES - 37 SECONDS EAST, 129.07 FEET TO A POINT;
39. SOUTH 09 DEGREES - 14 MINUTES - 09 SECONDS EAST, 188.32 FEET TO A POINT;
40. SOUTH 16 DEGREE S - 37 MINUTES - 17 SECONDS EAST, 86.41 FEET TO A POINT;
41. SOUTH 25 DEGREES - 15 MINUTES - 31 SECONDS EAST, 66.26 FEET TO A POINT;
42. SOUTH 34 DEGREES - 09 MINUTES - 37 SECONDS EAST, 119.35 FEET TO A POINT;
43. SOUTH 38 DEGREES - 43 MINUTES - 31 SECONDS EAST, 262.90 FEET TO A POINT;
44. SOUTH 31 DEGREES - 42 MINUTES - 37 SECONDS EAST, 182.43 FEET TO A POINT;

45. SOUTH 28 DEGREES - 22 MINUTES - 13 SECONDS EAST, 84.90 FEET TO A POINT;
46. SOUTH 15 DEGREES - 47 MINUTES - 43 SECONDS EAST, 38.73 FEET TO A POINT;
47. SOUTH 02 DEGREES - 03 MINUTES - 03 SECONDS EAST, 93.34 FEET TO A POINT;
48. SOUTH 05 DEGREES - 01 MINUTES - 04 SECONDS WEST, 179.71 FEET TO A POINT;
49. SOUTH 01 DEGREES - 35 MINUTES - 55 SECONDS WEST, 151.69 FEET TO A POINT;
50. SOUTH 05 DEGREES - 13 MINUTES - 27 SECONDS EAST, 302.78 FEET TO A POINT;
51. SOUTH 11 DEGREES - 23 MINUTES - 17 SECONDS EAST, 35.88 FEET TO A POINT;
52. SOUTH 24 DEGREES - 28 MINUTES - 52 SECONDS EAST, 91.34 FEET TO A POINT;
53. SOUTH 33 DEGREES - 47 MINUTES - 00 SECONDS EAST, 225.96 FEET TO A POINT;

LEGEND:

- Iron pin set
- Post
- ▲ Points

SURVEY FOR ROBERT MITCHELL PROPERTY

SCALE: 1" = 500'

APPROVED BY:

DATE: 30 NOV 01

[Signature]

DRAWN BY: *[Signature]*

REVISED

TERRY J. FINLEY SURVEYING & MAPPING

155 MOCKINGBIRD HILL, ZANESVILLE, OH 43701

DRAWING NUMBER

01 - 350