

SURVEYING & MAPPING

L. Peter Dinan & Associates**27 South Sixth Street****P. O. Box 55, Zanesville, Ohio 43701**

40-00-27-51-001
 9555 BIG MUSKIE DR.

Description For Conveyance
Part of John Reed

Situated in the State of Ohio, County of Muskingum, Township of Meigs.

Being a part of the northwest quarter of Section 27, Township 12, Range 11, bounded and described as follows:

Commencing at a post at the southeast corner of the northwest quarter of said Section 27; thence south 87 degrees 24 minutes 36 seconds west 635.50 feet to a post on the east side of Lytlesburg Cemetery; thence along the east line of said cemetery north 2 degrees 34 minutes 52 seconds west 57.75 feet to an iron pin at the northeast corner of said cemetery; thence along the north line of said cemetery south 89 degrees 38 minutes 34 seconds west 224.83 feet to a stone monument at the northwest corner of said cemetery; thence north 540 feet to a corner post; thence north 85 degrees 26 minutes 06 seconds west 639.85 feet to a nail in the center of existing State Route #284 and the true place of beginning of the premises herein intended to be described; thence south 87 degrees 47 minutes 13 seconds west 197.05 feet to a corner post; thence south 9 degrees 06 minutes 11 seconds east 235.66 feet to a corner post; thence south 87 degrees 24 minutes 36 seconds west 984.14 feet to an iron pin; thence north 4 degrees 18 minutes 20 seconds west 833.90 feet to a nail in the center of Drake and Martin Road; thence along the center of said road the following nine (9) courses and distances south 55 degrees 55 minutes 26 seconds east 247.30 feet to a point; thence south 65 degrees 53 minutes 10 seconds east 180.45 feet to a point; thence south 75 degrees 27 minutes 42 seconds east 198.10 feet to a point; thence south 86 degrees 51 minutes 42 seconds east 137.60 feet to a point; thence north 79 degrees 05 minutes 25 seconds east 151.50 feet to a point; thence north 70 degrees 22 minutes 02 seconds east 147.0 feet to a point; thence north 75 degrees 12 minutes 02 seconds east 94.40 feet to a point; thence south 70 degrees 55 minutes 36 seconds east 96 feet to a point; thence south 46 degrees 48 minutes 30 seconds east 149.60 feet to a nail in the center of the aforesaid State Route #284; thence along the center of said State Route #284 south 16 degrees 15 minutes 16 seconds west 255.87 feet to the true place of beginning, containing fifteen and sixty-six hundredths (15.66) acres more or less.

Subject to the easements of all legal highways.

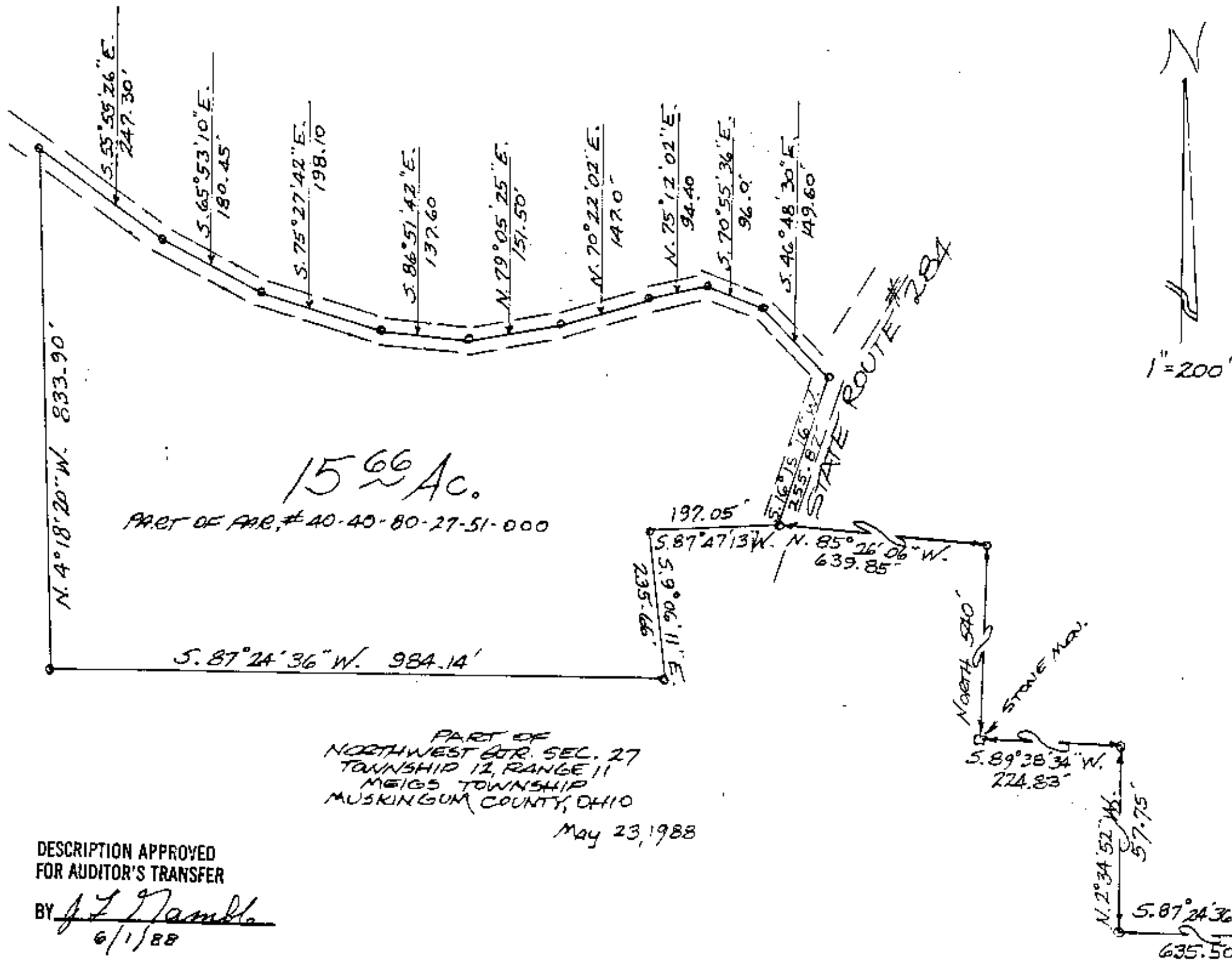
This description written from a survey made by L. Peter Dinan, Registered Surveyor #5451, May 23, 1988.

OFFICE COPY
NOT RECORDABLE

DESCRIPTION APPROVED
 FOR AUDITOR'S TRANSFER

BY J. L. Hambl
 6/1/88

L. PETER DINAN & ASSOCIATES
27 SOUTH SIXTH STREET
ZANESVILLE, OHIO



27