

42-60-19-14  
42-60-19-13  
42-60-19-08  
42-60-19-02 SNR  
N/A

**RAVENTECK LTD.**

20769 CR-6

COSHOCTON, OHIO 43812-9148

(740) 622-8922

FAX (740) 625-8865

OCTOBER 26, 1998

**TRACT No. 5**

This is a description for Donald E. and H. Lucille Fulks (the Grantor) of part of their lands as recorded in (vol.680, pg.173), part of PP #'s 42-42-60-19-14-000, 42-42-60-19-13-000, 42-42-60-19-08-000 and 42-42-60-19-02-000, of the Muskingum County Records in the Northeast Quarter, Southeast Quarter and Southwest Quarters of Section 19, Township 3, Range 5, Monroe Township, Muskingum County, Ohio, which is further described as follows:

Note: The angular variation between lines is based upon an Azimuth North from a Solar Observation, +/- 20", all pins called out as set are 5/8" x 30" ReBars.

Beginning at a point on the East line of the said Southeast Quarter of Section 19 in the center of Dickson Road (Twp. Rd. 133) and on the West line of the lands of C. Hamilton (vol.1089, pg.180), said point being located from a steel pin set at the Northeast corner of said Section 19 by the following three (3) courses;

- (1) S 2° 22' 12" W a distance of 2634.50' to a steel pin set on the North right-of-way line of Granny's Knob Road (Co. Rd. 17);
  - (2) Continuing S 2° 22' 12" W a distance of 20.00' to a steel pin recovered at the intersection of the centerline of said Dickson Road and the centerline of said Granny's Knob Road;
  - (3) Continuing S 2° 22' 12" W a distance of 546.94' to the said Beginning point;
- Thence continuing with the said East line of Section 19 with the following three (3) courses;
- (1) Continuing with, the said West line of C. Hamilton (vol.1089, pg.180) and the said center of Dickson Road, continuing S 2° 22' 12" W a distance of 216.36' to a spike recovered at the North corner of the lands of C. Hamilton (vol.1081, pg.399);
  - (2) With the West line of the said lands of C. Hamilton (vol.1081, pg.399), continuing S 2° 22' 12" W a distance of 69.64' to a recovered steel pin;
  - (3) Continuing with the said West line of C. Hamilton (vol.1081, pg.399), continuing S 2° 22' 12" W a distance of 488.77' to steel pin set at the Southwest corner of the said lands of Hamilton and the Northeast corner of the lands of Abe Keim, et al (vol.835, pg.41);

Thence with the North line of the said lands of Abe Keim, et al, N 87° 43' 47" W a distance of 2633.03' to a steel pin set on the West line of the said Southeast Quarter of Section 19 and the East line of the lands of F. Hershberger (vol.1049, pg.292);

Thence with the said West line of the said Southeast Quarter of Section 19 and the said West line of the lands of F. Hershberger (vol.1049, pg.292), N 2° 30' 44" E a distance of 32.96' to a set steel pin;

Thence crossing into the said Southwest Quarter of Section 19 and with the North line of the said lands of F. Hershberger (vol.1049, pg.292) with the following two (2) courses;

- (1) N 85° 06' 42" W a distance of 666.18' to a steel pin set on the East right-of-way line of Barker Lane (Twp. Rd. 176);
- (2) Continuing N 85° 06' 42" W a distance of 20.00' to a point in the center of said Barker Lane, said line also being the West line of the lands of F. Hershberger (vol.1074, pg.571);

Thence with the said center of Barker Lane and the said West line of the lands of F. Hershberger (vol.1074, pg.571) with the following two (2) courses;

- (1) N 5° 33' 48" E a distance of 1054.12' to a point;

**OFFICE COPY  
NOT RECORDABLE**

- (2) With a curve to the right, curve data for which is,  $R = 150.00'$ ,  $AD = 131.64'$ ,  $DA = 50^\circ 17' 03''$ , the chord for which is  $N 30^\circ 42' 18'' E$  a distance of  $127.46'$  to a point;  
Thence through the said lands of the Grantor with the following nine (9) courses;
- (1)  $S 58^\circ 46' 22'' E$  a distance of  $22.00'$  to a set steel pin;
  - (2) Continuing  $S 58^\circ 46' 22'' E$  a distance of  $715.65'$  and crossing back into the said Southeast Quarter of Section 19 to a set steel pin;
  - (3)  $N 79^\circ 31' 57'' E$  a distance of  $296.79'$  to a set steel pin;
  - (4)  $S 72^\circ 36' 36'' E$  a distance of  $469.81'$  to a set steel pin;
  - (5)  $N 52^\circ 40' 53'' E$  a distance of  $353.91'$  to a set steel pin;
  - (6)  $N 20^\circ 53' 07'' E$  a distance of  $247.20'$  to a set steel pin;
  - (7)  $N 56^\circ 31' 14'' E$  a distance of  $130.83'$  and crossing into the Northeast Quarter of said Section 19 to a set steel pin;
  - (8)  $N 75^\circ 52' 32'' E$  a distance of  $416.85'$  to a steel pin set on the West right-of-way line of Granny's Knob Road (Co.Rd. 17);
  - (9) Continuing  $N 75^\circ 52' 32'' E$  a distance of  $20.91'$  to a point in the centerline of said Granny's Knob Road;

Thence with the said centerline of Granny's Knob Road and with a curve to the left, curve data for which is,  $R = 351.45'$ ,  $AD = 302.12'$ ,  $DA = 49^\circ 15' 11''$ , the chord for which is  $S 56^\circ 09' 46'' E$  a distance of  $292.90'$  to a point, said point also being on the South line of the said Northeast Quarter of said Section 19;

Thence continuing through the said lands of the Grantor and crossing back into the said Southeast Quarter of Section 19 with the following six (6) courses;

- (1)  $S 15^\circ 15' 29'' W$  a distance of  $20.11'$  to a steel pin set on the South right-of-way line of said Granny's Knob Road;
- (2) Continuing  $S 15^\circ 15' 29'' W$  a distance of  $278.87'$  to a set steel pin;
- (3)  $N 87^\circ 37' 48'' W$  a distance of  $120.72'$  to a set steel pin;
- (4)  $S 0^\circ 34' 17'' E$  a distance of  $253.92'$  to a set steel pin;
- (5)  $S 87^\circ 37' 48'' E$  a distance of  $833.34'$  to a steel pin set on the West right-of-way line of said Dickson Road;
- (6) Continuing  $S 87^\circ 37' 48'' E$  a distance of  $24.64'$  to the point of Beginning.

This tract contains 75.847 acres more or less of which 30.065 Acres are in PP #42-42-60-19-14-000, 28.947 Acres are in PP #42-42-60-19-13-000, 15.649 Acres are in PP #42-42-60-19-08-000 and 1.186 Acres are in PP #42-42-60-19-02-000 as surveyed by George W. Stewart, PS 6357, July 1998.

**OFFICE COPY  
NOT RECORDABLE**

DESCRIPTION APPROVED  
FOR AUDITOR'S TRANSFER  
BY *AZS*

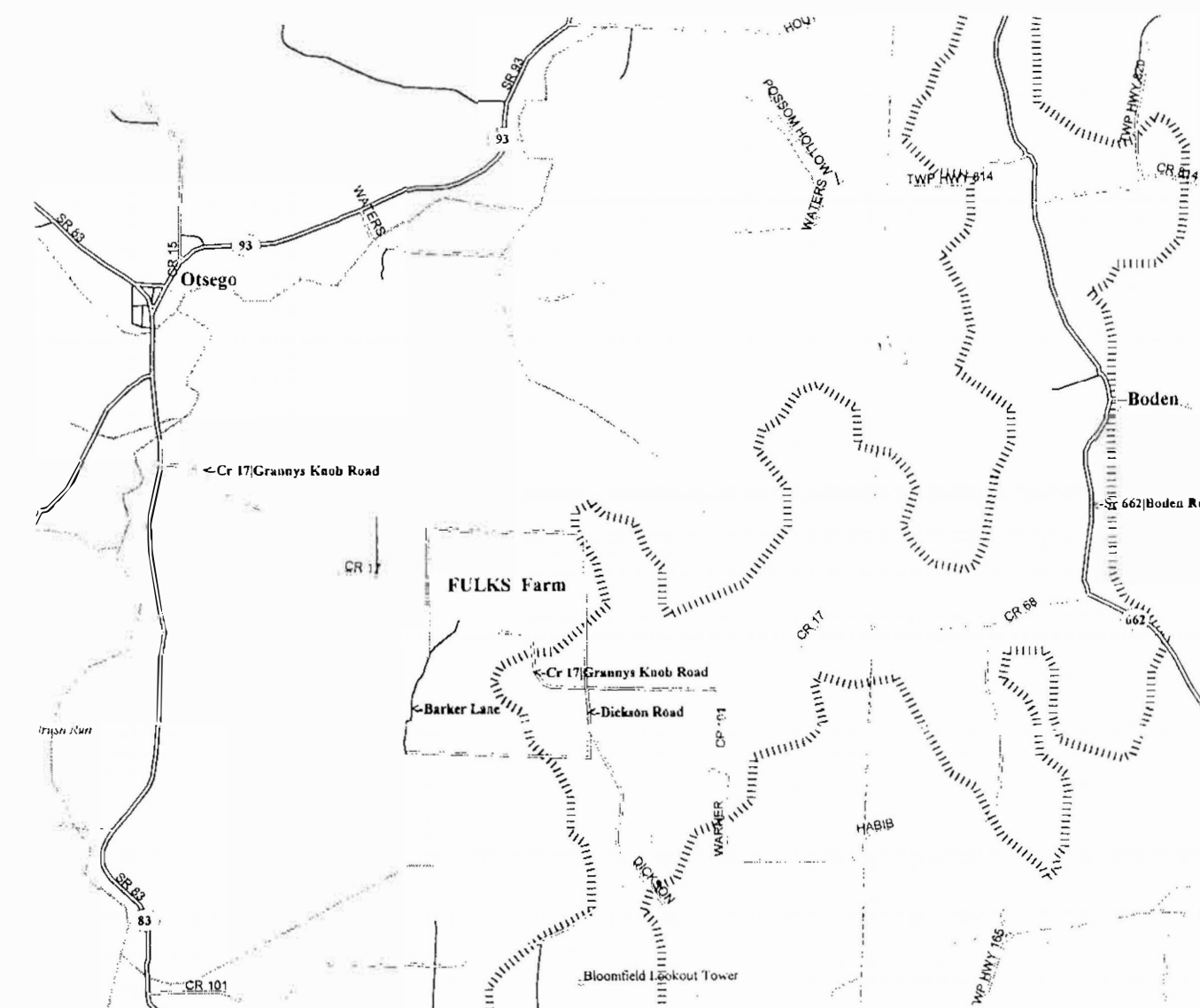
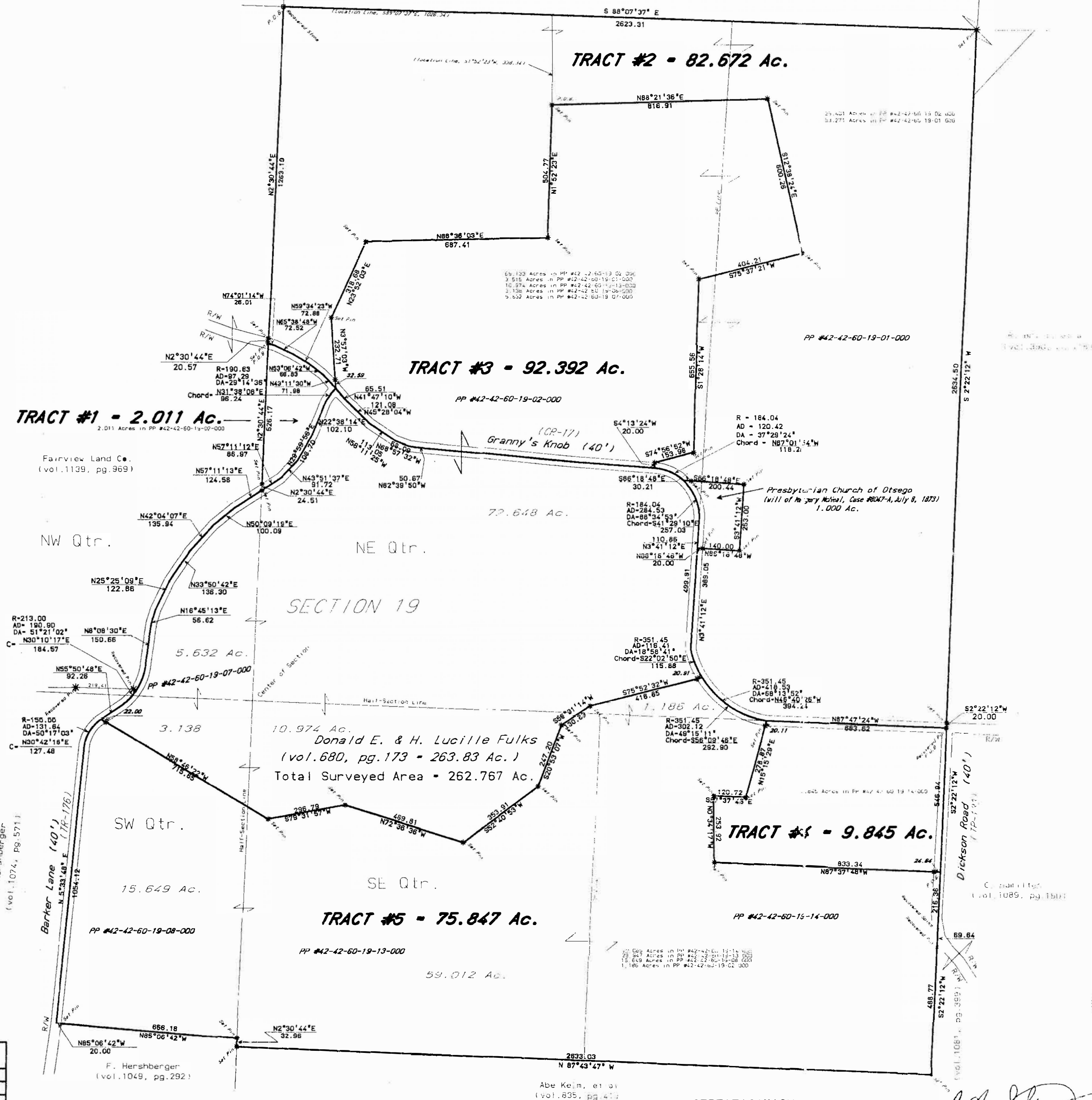
11-2-98

C. Bissonnette  
(vol. 1066, pg. 317)

Fairview Land Co.  
(vol. 1139, pg. 969)

# RESEARCH REFERENCES

Vol. 300, pg. 446  
Vol. 680, pg. 772  
Vol. 835, pg. 41  
Vol. 1049, pg. 292  
Vol. 1074, pg. 571  
Vol. 1139, pg. 969  
Vol. 390, pg. 118  
Vol. 1081, pg. 399  
Vol. 1089, pg. 180  
Will of Mary McNeal, Case #8047-A, July 6, 1873  
Tax Map #42-60



Beings Based upon a Solar Observation, 4/7/20

<b>Donald E. &amp; H. Lucille Fulks</b>	
<b>Sec. 19 / T-3, R-5 / Monroe Twp. / Muskingum Co. / Ohio</b>	
<b>RAVENTECK, Ltd.</b>	
<b>20769 CR-6, COSHOCTON, OHIO 43812 (740) 622-8922</b>	
<b>Scale: 1" = 300'</b>	<b>Date: July 17 1998</b>
<b>SUBDIVISION</b>	<b>LAY-OUT</b>
<b>Drawn By: B. W. R.</b>	<b>SHEET 1</b>