

42-60-20-02

N/A

727 Cambridge Road
Coshocton, Ohio 43812



LANDMARK SURVEYS
EARL R. DONAKER, P.S.

(614) 623-0993
1-800-842-3264

RUBY C. DURBEN TRACT 2: 112.717 Acres

RB0652T2

Being 112.717 acres, more or less (part of #42-60-20-02-000, in the south half of the northeast quarter and all of #42-60-20-13-000 in the southeast quarter) of section 20, in the fourth quarter of township 3 north, range 5 west, United States Military Lands, in the township of Monroe, in the county of Muskingum, in the State of Ohio, and more particularly described as follows:

Beginning at a 5/8" steel pin found at the center of section 20, said 5/8" steel pin found being the TRUE POINT OF BEGINNING;

thence, along the north and south quarterline the following 2 courses:

1. thence, N.00°08'44"W. 286.45' to a 5/8" steel pin set;
2. thence, continuing N.00°08'44"W. 31.54' to a point in the centerline of Granny's Knob Road, CR 17;

thence, through the property of Ruby C. Durben, 1106/512 and along the centerline of Granny's Knob Road, CR 17 the following 7 courses:

1. thence, along a non-tangent curve, concave to the southeast having the following properties: delta = 25°29'59"; radius = 332.86'; arc = 148.14'; chord = N.52°22'02"E. 148.82' to a point;
2. thence, N.65°07'02"E. 706.43' to a point;
3. thence, along a tangent curve, concave to the southeast having the following properties: delta = 05°17'14"; radius = 3833.03'; arc = 359.72'; chord = N.67°45'39"E. 353.59' to a point of reverse curve;
4. thence, along a tangent curve, concave to the northwest having the following properties: delta = 14°08'16"; radius = 882.60'; arc = 212.35'; chord = N.63°21'08"E. 211.81' to a point;
5. thence, N.58°18'00"E. 198.00' to a point;
6. thence, N.48°32'00"E. 61.00' to a point;
7. thence, N.38°09'30"E. 318.00' to a point;

thence, along the east and west eighth line of the northeast quarter the following 3 courses:

1. thence, S.89°41'38"E. 25.19' to a 5/8" steel pin set;
2. thence, continuing S.89°41'38"E. 588.31' to a 5/8" steel pin set;
3. thence, continuing S.89°41'38"E. 337.79' to a 5/8" steel pin set;

thence, along the Muskingum-Guernsey County line the following 2 courses:

1. thence, S.00°18'18"W. 1122.13' to a stone found;
2. thence, S.00°10'19"E. 1507.83' to a 4 foot diameter tree;

thence, along the east and west eighth line of the southeast quarter, S.68°12'36"W. 1320.00' to a 5/8" steel pin found;

thence, along the property line of Holmes Woodland, Inc. 1095/495 the following 2 courses:

1. thence, N.35°41'00"W. 1877.54' to a 5/8" steel pin found;
2. thence, S.89°55'47"W. 330.58' to the TRUE POINT OF BEGINNING, containing 112.717 acres, more or less, including public road right-of-way and is subject to all easements, rights-of-way, or restrictions, whether recorded or implied.

Bearings are based on D.B. 1095/495, N.35°41'00"W, and are for angular calculations only. All 5/8" steel pins set are 30" long with plastic cap marked "E.R.D. 7142".

Pertinent documents: tax maps; deeds: 564/172, 1106/512, 1057/379, 1095/495, 1064/565, 390/118; surveys by: R.L. Daniels.

Prior deed: 1106/512.

Description and plat by Landmark Surveys, Earl R. Donaker, Professional Surveyor, #7142, from a survey of the premises in the month of January, in the year of our LORD one thousand nine hundred and ninety-eight.

DESCRIPTION APPROVED
FOR AUDITORS TRANSFER

BY APL/DB

1-29-98

**OFFICE COPY
NOT RECORDABLE**

727 Cambridge Road
Coshocron, Ohio 43812

LANDMARK SURVEYS

EARL R. DONAKER, P.S.

tel: (614) 623-0993
1-800-842-3264

THIS PROPERTY IS SUBJECT TO
ALL EASEMENTS, RIGHTS-OF-WAY,
OR RESTRICTIONS, WHETHER
RECORDED OR IMPLIED.

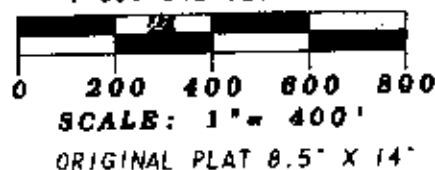
Pertinent documents: Tax maps:

Deeds: 564/172, 1106/512, 1057/379,
1095/495, 1084/565, 390/118

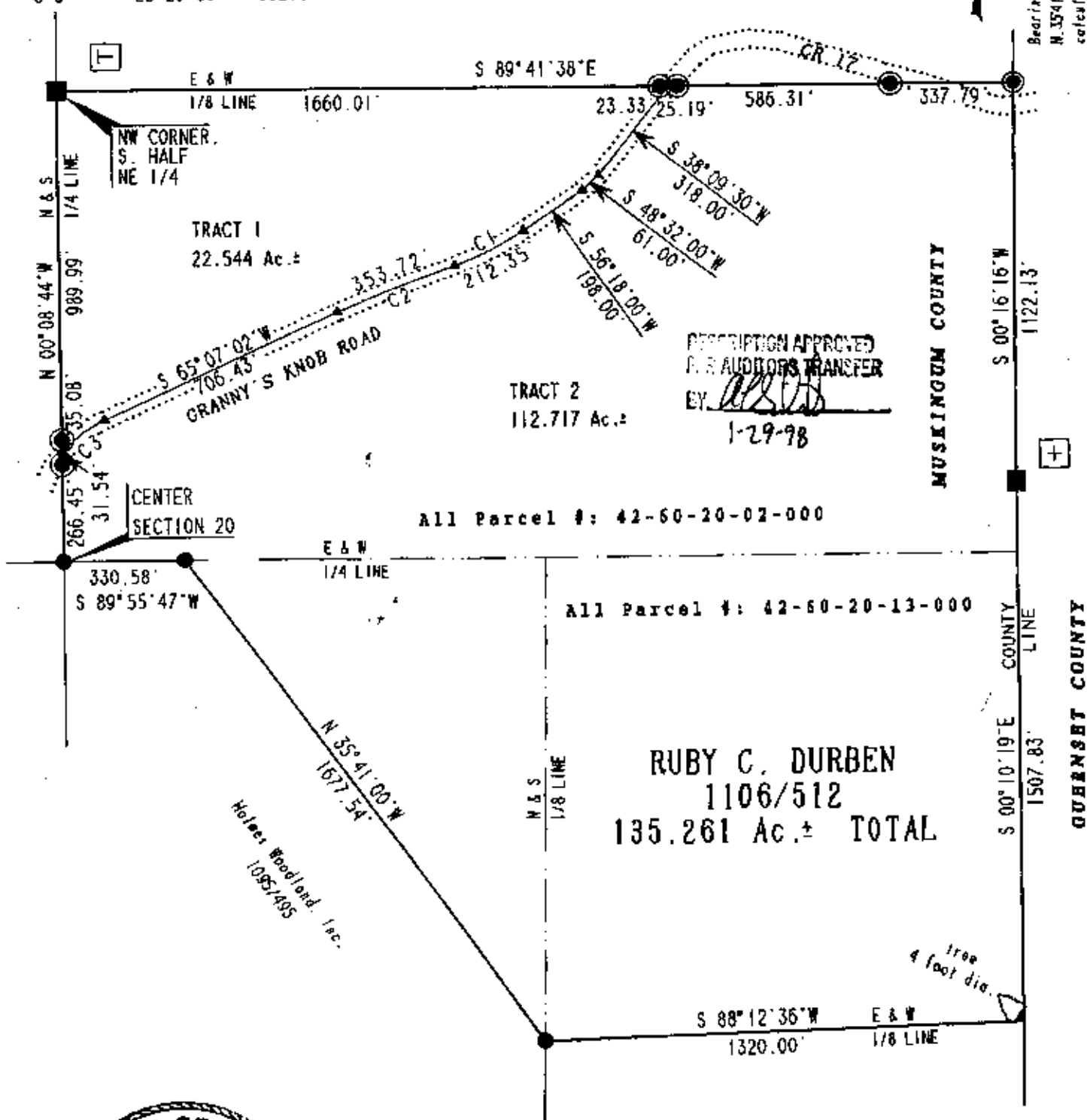
Surveys by: R.L. Daniels

NOTE:

All bearings & distances
between monumentation
were measured.



CURVE	DELTA ANGLE	RADIUS	ARC	CHORD	CHORD BEARING
C 1	14° 06' 16"	862.60'	212.35'	211.81'	S 63° 21' 08" W
C 2	5° 17' 14"	3833.03'	353.72'	353.59'	S 67° 45' 39" W
C 3	25° 29' 59"	332.86'	148.14'	146.92'	S 52° 22' 02" W



• All 5/8" steel pins set are 30"
long, plastic cap marked "ERD 7142"

- 5/8" steel pin found
- stone found
- ▲ point

I, EARL R. DONAKER, P.S., hereby
certify that the foregoing is a true and correct
survey of the above described property, and that the
Administrative Map is to be correct to
the best of my knowledge and belief.

"Remove not the old landmark." Proverbs 23:10

RUBY C. DURBEN
ACRES: 135.261
SECTION 20
FOURTH QUARTER, T 3 N. R 5 W.
UNITED STATES MILITARY LANDS
TOWNSHIP: MONROE
COUNTY: MUSKINGUM, OHIO
JANUARY, 1998 RD085297