

Thence passing through the parent tract the following 3 courses:

1. South 63°04'03" East, a distance of 542.22 feet to a capped rebar set;
2. South 12°00'51" East, a distance of 275.01 feet to a point;
3. South 78°12'27" West, a distance of 326.36 feet passing a capped rebar set at 10.19 feet, returning to the POINT OF BEGINNING of the parcel herein described.

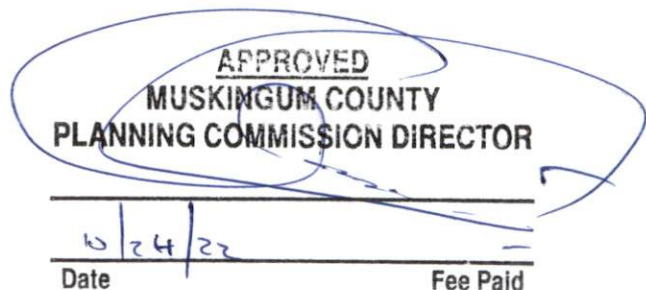
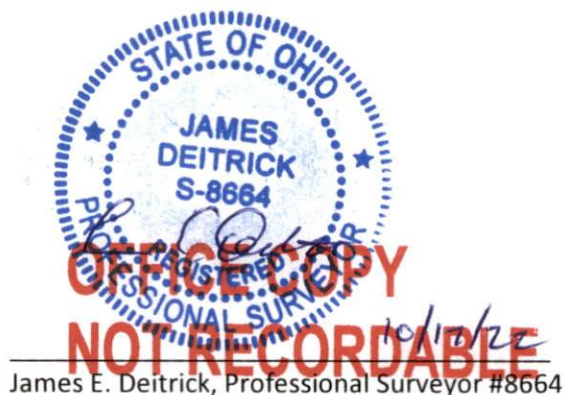
The above described area includes part of Muskingum County Auditor's Parcel Number 44-06-51-14-000, and contains 2.423 acres (105,543 square feet) of land.

Capped Rebar Set in the above description are 5/8 inch x 30 inch long rebar set with plastic caps marked "UTI BOUNDARY MONUMENT".

The basis of bearings in this description is based on the Ohio State Plane Coordinates, South Zone, NAD83(2011), epoch 2010.00, with distances expressed in US Survey Feet, Grid.

The description was prepared in October 2022 by James E. Deitrick, P.S. No. 8664, and is based on a field survey performed by James E. Deitrick, P.S. No. 8664 in October 2022.

Not to be used as a separate building site or transferred as an independent parcel in the future without planning commission approval in accordance with applicable subdivision regulations. Parcel to be combined to Auditor's Parcel Number 44-06-51-14-002.



DESCRIPTION  
APPROVED  
By: DW 10-24-2022