

Being a part of lot number 31, a part of lot number 39, and a part of Lot number 40 in Quarter Township 3, Township two, Range eight, United States Military Lands, Muskingum Township, Muskingum County, Ohio and being further described as follows:

Beginning at a point marked by an existing stone at the South west corner of the said Lot number 40; thence North 02 degrees 24 minutes 50 seconds East a distance of 1875.10 feet along the West line of said lot number 40 to a point marked by an iron pin (3/4" pipe), said point being the Southwest Corner of a tract owned by John T. and Bernice Gay as recorded in Deed Book Volume 607 page 200/204 of the Muskingum County Deed Records; thence North 83 degrees 02 minutes 30 seconds East a distance of 408.65 feet along the South line of the said John T. and Bernice Gay tract to a point marked by an existing iron pin (3/4" pipe), at the South east corner of the said Gay tract; thence North 03 degrees 34 minutes 18 seconds East a distance of 409.50 feet along the East line of the said Gay tract to a point marked by an existing iron pin (3/4 inch pipe), at the Northeast corner of the said Gay tract, passing a point marked by an existing iron pin (3/4 inch pipe) at 184.93 feet; thence South 86 degrees 56 minutes 02 seconds West a distance of 463.26 feet along the North line of the said Gay tract to a point marked by an existing iron pin (3/4 inch pipe) at the Northwest corner of the said Gay tract, said point also being on the West line of the said Lot number 40; thence North 01 degree 41 minutes 49 seconds East a distance of 1023.89 feet along the said West line of Lot number 40 to a point in the center of State Route 146, passing points marked by iron pins (3/4 inch pipe) at 688.89 feet and 973.89 feet; thence South 55 degrees 01 minute 08 seconds East a distance of 408.01 feet to a point in the said center of State Route 146 (Old location); thence with a curve to the right having a radius of 1432.40 feet (chord bearing South 49 degrees 28 minutes 03 seconds East a distance of 351.03 feet) an arc distance of 351.91 feet to a point in the center of State Route 146 (Old location); thence North 27 degrees 23 minutes 12 seconds East a distance of 25.62 feet to a point in the center of relocated State Route 146; thence with a curve to the right having a radius of 7161.98 feet (chord Bearing South 40 degrees 49 minutes 06 seconds East a distance of 1348.11 feet) an arc distance of 1350.11 feet to a point in the center of relocated State Route 146; thence South 46 degrees 28 minutes 16 seconds West a distance of 148.64 feet to a point marked by an iron pin on the 765 contour, passing a point marked by an iron pin on the 765 contour at 102.29 feet; thence following the said 765 contour the next 52 courses and distances;

- 1) South 55 degrees 12 minutes 43 seconds West a distance of 45.73 feet to a point marked by an iron pin;
- 2) North 73 degrees 07 minutes 05 seconds West a distance of 51.03 feet to a point marked by an iron pin;
- 3) North 52 degrees 30 minutes 30 seconds West a distance of 60.60 feet to a point marked by an iron pin;
- 4) North 54 degrees 11 minutes 09 seconds West a distance of 57.84 feet to a point marked by an iron pin;
- 5) South 68 degrees 23 minutes 42 seconds West a distance of 34.42 feet to a point in the center of the Old State Route number 146;
- 6) North 66 degrees 56 minutes 49 seconds West a distance of 85.52 feet to a point marked by an iron pin;
- 7) North 53 degrees 10 minutes 31 seconds West a distance of 81.05 feet to a point marked by an iron pin;
- 8) North 80 degrees 40 minutes 05 seconds West a distance of 68.70 feet to a point marked by an iron pin;

- 9) North 44 degrees 47 minutes 45 seconds West a distance of 65.90 feet to a point marked by an iron pin;
- 10) South 86 degrees 10 minutes 57 seconds West a distance of 202.85 feet to a point marked by an iron pin;
- 11) North 72 degrees 29 minutes 23 seconds West a distance of 77.50 feet to a point marked by an iron pin;
- 12) South 73 degrees 37 minutes 44 seconds West a distance of 30.03 feet to a point marked by an iron pin;
- 13) South 03 degrees 15 minutes 55 seconds West a distance of 138.99 feet to a point marked by an iron pin;
- 14) South 86 degrees 56 minutes 06 seconds East a distance of 63.21 feet to a point marked by an iron pin;
- 15) South 77 degrees 48 minutes 25 seconds East a distance of 110.70 feet to a point marked by an iron pin;
- 16) South 65 degrees 46 minutes 04 seconds East a distance of 147.77 feet to a point marked by an iron pin;
- 17) South 59 degrees 14 minutes 42 seconds East a distance of 132.49 feet to a point marked by an iron pin;
- 18) South 73 degrees 01 minute 44 seconds East a distance of 81.81 feet to a point marked by an iron pin;
- 19) South 66 degrees 57 minutes 14 seconds East a distance of 63.53 feet to a point marked by an iron pin;
- 20) South 54 degrees 13 minutes 12 seconds East a distance of 86.81 feet to a point marked by an iron pin;
- 21) North 72 degrees 41 minutes 57 seconds West a distance of 202.69 feet to a point marked by an iron pin;
- 22) North 76 degrees 46 minutes 37 seconds West a distance of 66.07 feet to a point marked by an iron pin;
- 23) North 72 degrees 43 minutes 45 seconds West a distance of 92.33 feet to a point marked by an iron pin;
- 24) South 57 degrees 57 minutes 50 seconds West a distance of 58.66 feet to a point marked by an iron pin;
- 25) South 23 degrees 37 minutes 47 seconds West a distance of 187.36 feet to a point marked by an iron pin;
- 26) South 06 degrees 43 minutes 01 seconds East a distance of 87.20 feet to a point marked by an iron pin;
- 27) South 32 degrees 35 minutes 20 seconds East a distance of 78.21 feet to a point marked by an iron pin;
- 28) South 66 degrees 29 minutes 50 seconds East a distance of 94.01 feet to a point marked by an iron pin;
- 29) South 53 degrees 50 minutes 08 seconds East a distance of 83.97 feet to a point marked by an iron pin;
- 30) South 75 degrees 46 minutes 17 seconds East a distance of 102.77 feet to a point marked by an iron pin;
- 31) South 74 degrees 02 minutes 06 seconds East a distance of 59.98 feet to a point marked by an iron pin;
- 32) South 62 degrees 15 minutes 05 seconds East a distance of 111.66 feet to a point marked by an iron pin;
- 33) South 49 degrees 49 minutes 48 seconds East a distance of 160.52 feet to a point marked by an iron pin;
- 34) South 50 degrees 29 minutes 57 seconds East a distance of 107.04 feet to a point marked by an iron pin;
- 35) South 37 degrees 04 minutes 44 seconds East a distance of 55.52 feet to a point marked by an iron pin;
- 36) South 29 degrees 02 minutes 08 seconds West a distance of 41.08 feet to a point marked by an iron pin;

- 37) South 86 degrees 47 minutes 13 seconds East a distance of 41.21 feet to a point marked by an iron pin;
- 38) South 36 degrees 06 minutes 54 seconds East a distance of 229.80 feet to a point marked by an iron pin;
- 39) South 23 degrees 40 minutes 02 seconds East a distance of 192.99 feet to a point marked by an iron pin;
- 40) South 09 degrees 24 minutes 34 seconds West a distance of 40.34 feet to a point marked by an iron pin;
- 41) South 34 degrees 57 minutes 30 seconds West a distance of 30.70 feet to a point marked by an iron pin;
- 42) South 83 degrees 48 minutes 46 seconds East a distance of 47.13 feet to a point marked by an iron pin;
- 43) South 22 degrees 08 minutes 42 seconds East a distance of 30.35 feet to a point marked by an iron pin;
- 44) South 07 degrees 30 minutes 35 seconds West a distance of 22.72 feet to a point marked by an iron pin;
- 45) South 52 degrees 02 minutes 48 seconds East a distance of 11.53 feet to a point marked by an iron pin;
- 46) South 23 degrees 14 minutes 16 seconds East a distance of 65.11 feet to a point marked by an iron pin;
- 47) South 44 degrees 15 minutes 33 seconds East a distance of 68.48 feet to a point marked by an iron pin;
- 48) South 29 degrees 50 minutes 22 seconds East a distance of 129.37 feet to a point marked by an iron pin;
- 49) South 13 degrees 15 minutes 53 seconds East a distance of 116.08 feet to a point marked by an iron pin;
- 50) South 06 degrees 30 minutes 06 seconds East a distance of 54.49 feet to a point marked by an iron pin;
- 51) South 12 degrees 38 minutes 14 seconds East a distance of 119.30 feet to a point marked by an iron pin;
- 52) South 12 degrees 50 minutes 58 seconds East a distance of 82.94 feet to a point marked by an iron pin on the South line of lot number 31; thence North 87 degrees 30 minutes 51 seconds West a distance of 2190.40 feet along the said South line of lot number 31 and the South line of lot number 40 to the place of beginning, passing points marked by iron pins at 270.66 feet and 1311.40 feet.

Containing 96.305 more or less acres (total), 2.393 more or less acres in lot number 31, 9.312 more or less acres in lot number 39 and 84.660 more or less acres in lot number 40.

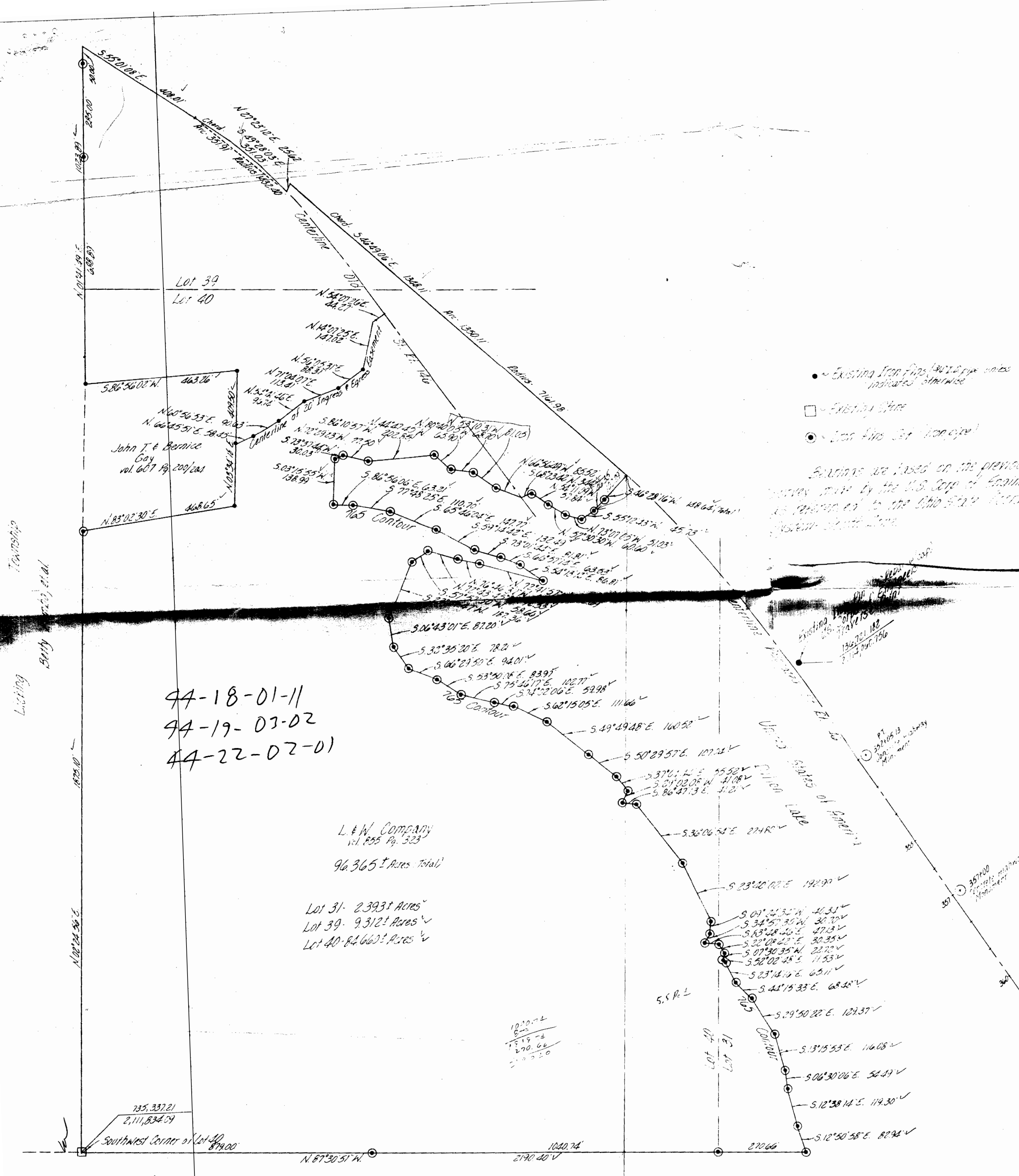
Subject to all legal road right-of-ways of State Route 146, also subject to a 20 foot easement to a 4.5 acre tract recorded in Volume 607 page 200 of Muskingum County Deed Records, also subject to a flowage easement conveyed from Daisy Gay to U.S.A. as E-518-E-1.

I hereby certify the above description to be correct as prepared by me this 22nd day of November 1982.

**OFFICE COPY**  
**NOT RECORDABLE**

W. J. BIEDENBACH  
Reg. Surveyor #5718

Willard Wheeler  
1002-4-82



- Existing Iron Pins (401.0 pin unless indicated otherwise)
- Existing Stone
- Iron Pins Set (100.0 pin)

Boundaries are based on the previous survey made by the U.S. Corp of Engineers as referenced to the Ohio State Plane System - South Zone.

44-18-01-11  
44-19-03-02  
44-22-02-01

L & W Company  
Vol. 855 Pg. 323  
96.365 ± Acres (Total)

Lot 31- 2.3931 Acres  
Lot 39- 9.3121 Acres  
Lot 40- 64.6603 Acres

Being a part of Lot 31, a part of Lot 39, and a part of Lot 40 in Quarter Township 3, Township 2, Range 8, United States Military Lands, Muskingum Township, Muskingum County, Ohio.

I hereby certify the above survey and plat to be correct as prepared by me this 2nd day of November 1982.

W. J. Biedenbach  
W. J. Biedenbach - Reg. Surveyor #5718

Engrs Copy  
OK AND  
7-24-84

W. J. BIEDENBACH & ASSOC. Surveying & Mapping 3120 Lisa Ln. Zanesville, Ohio 43701 (614) 453-4850	
Drawn by: <u>WJB</u>	Dwn: <u>10-21-82</u>
Scale: <u>1"=200'</u>	Checked by: <u>WJB</u>

U.S. Corp of Engineers  
Traveler Point  
Existing Iron Pin (401.0 pin unless indicated otherwise)