

ALAN DONAKER SURVEYING

Alan Donaker, P.S.

19849 TR 383

Walhonding, OH 43843

Phone: (740) 327-7001

Fax: (740) 327-6101

Being 9.782 acres, more or less, in the Southwest Quarter of Section 1, First Quarter, Township 17 North, Range 15 West, Congress Lands East of the Scioto River, in the Township of Newton, in the County of Muskingum, in the State of Ohio, conveyed to Gary E. Nelson, DR 1159-178 (part), Parcel No. 47-04-01-28-000 (part), and more particularly described as follows:

Commencing at an iron pin of record at the Southeast corner of the Southwest Quarter of Section 1;

thence, with the North and South one-half Section line of Section 1, the following two (2) courses;

1. thence, N. 00° 09' 00" W. a distance of 1434.32' (record) to a 5/8" rebar found;
2. thence, N. 00° 09' 00" W. a distance of 17.85' to a point in the centerline of Slack Road, Township Road 90, said point being the TRUE POINT OF BEGINNING;

thence, with the centerline of Slack Road, Township Road 90, and through the property of Gary E. Nelson, DR 1159-178, the following five (5) courses;

1. thence, S. 78° 58' 41" W. a distance of 25.41' to a point;
2. thence, S. 75° 35' 43" W. a distance of 390.53' to a point;
3. thence, S. 70° 42' 36" W. a distance of 83.55' to a point;
4. thence, S. 58° 00' 44" W. a distance of 84.75' to a point;
5. thence, S. 44° 23' 02" W. a distance of 41.88' to a point;

thence, with the property line of F. Glenn & Garnet Montgomery, DR 1064-63, the following four (4) courses;

1. thence, N. 00° 32' 51" W. a distance of 32.23' to a 5/8" steel pin set;
2. thence, N. 00° 32' 51" W. a distance of 179.62' to a 5/8" rebar found;
3. thence, N. 00° 32' 51" W. a distance of 741.49' to a 5/8" rebar found;
4. thence, N. 00° 32' 51" W. a distance of 16.65' to a point on the South bank of Kent's Run;

thence, with the property line of Alan L. Leasure, DR 1029-284 & 1029-288, and the South Bank of Kent's Run, the following three (3) courses;

1. thence, S. 69° 34' 24" E. a distance of 91.83' to a 5/8" rebar found;
2. thence, S. 63° 34' 24" E. a distance of 200.17' to a 5/8" rebar found;

3. thence, S. 73° 45' 18" E. a distance of 339.29' to a point (5/8" rebar found S. 02° 25' 52" W a distance of 22.58');

thence, with the North and South one-half Section line of Section 1, the following four (4) courses;

1. thence, S. 00° 09' 00" E. a distance of 123.20' to a 5/8" rebar found;
2. thence, S. 00° 09' 00" E. a distance of 240.05' to a 5/8" rebar found;
3. thence, S. 00° 09' 00" E. a distance of 161.21' to a 5/8" rebar found;
4. thence, S. 00° 09' 00" E. a distance of 25.00' to the TRUE POINT OF BEGINNING, containing 9.782 acres, more or less, including public road right-of-way and is subject to all easements, rights-of-way, or restrictions, whether recorded or implied.

Bearings are based on DR 1159-178 and are for angular calculations only.

All 5/8" steel pins set are 30" long with plastic cap marked "AMD 8050".

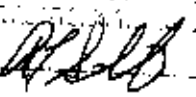
Pertinent Documents: Tax Map;

DR: 1159-178, 1029-284, 1029-288, 1145-623, 1064-63

Surveys by: R.L. Daniels, Loren C. Camp

Description and plat by Alan Donaker, Professional Surveyor, #8050, from a survey of the premises in the month of May, in the year of our Lord Two Thousand two.

**OFFICE COPY
NOT RECORDABLE**


J-20-2002

This property is subject to all easements, rights-of-way or restrictions, whether recorded or implied.

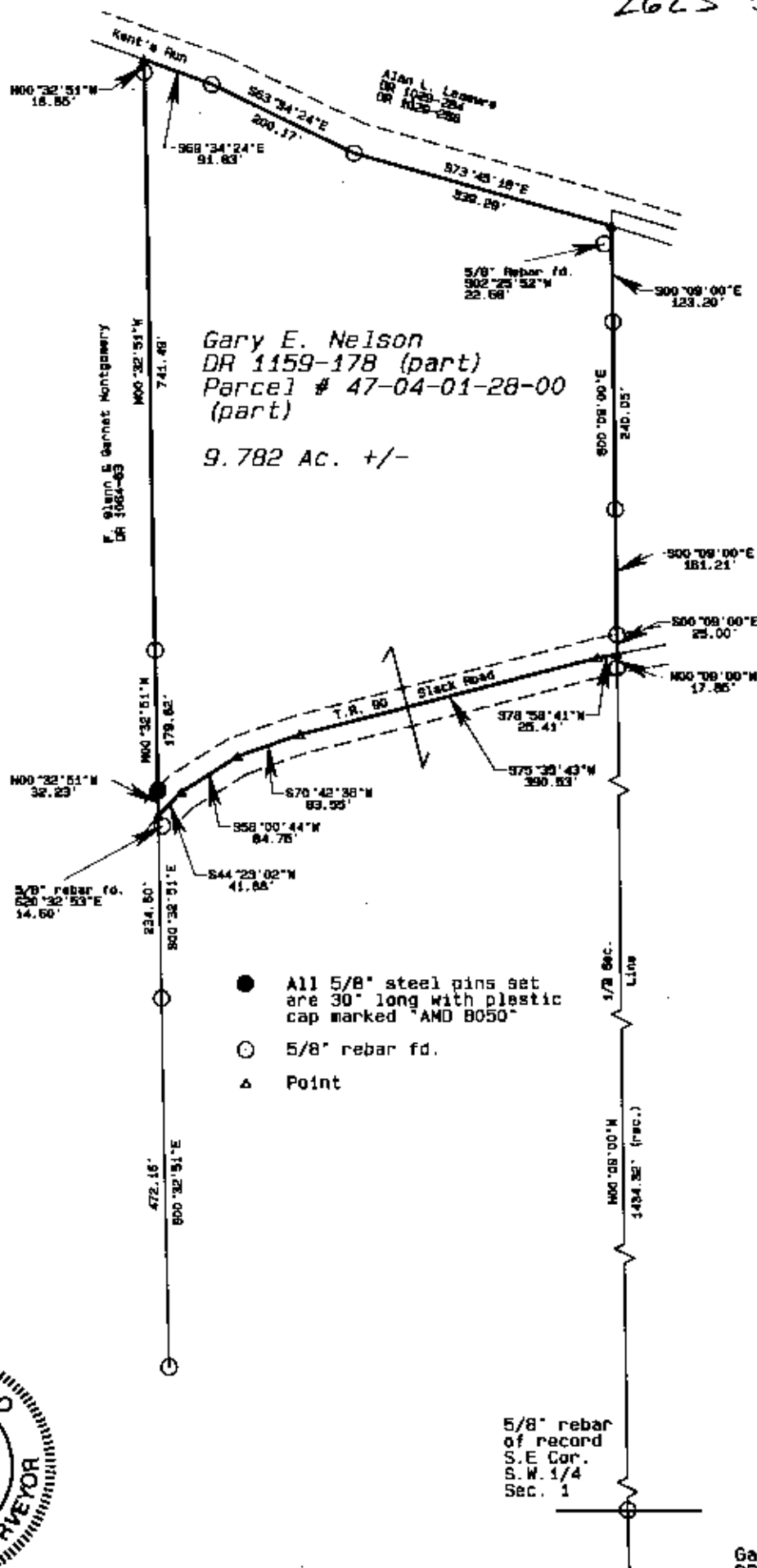
ALAN DONAKER SURVEYING
19849 TR 383
Walhonding, OH 43843
Telephone: (740) 327-7001
Fax: (740) 327-6101

Pertinent Documents: Tax Map
DR: 1159-178, 1029-284, 1029-288,
1145-623, 1064-63
Surveys by: R.L. Daniels, Loren C.
Camp

Bearings are based on
DR 1159-178 and are for
angular calculations only

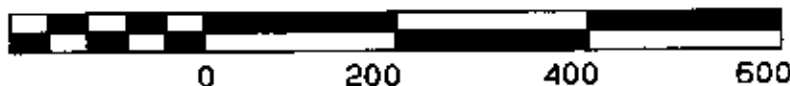
47-04-01-28-002

2625 SLACK RD



OFFICE COPY
NOT RECORDABLE

I, Alan Donaker, P.S. 8050, hereby certify this plat to represent a boundary survey pursuant to Chapter 4733.37 Ohio Administrative Code and to be correct to the best of my knowledge and belief.



Gary E. Nelson
DR 1159-178
9.782 Ac. +/-
Part S.W. 1/4, Sec. 1,
1st. 1/4, T17N, R15W,
Congress Lands East of
The Scioto River
Newton Township
Muskingum County, Ohio
Date: May 2002