

SITUATED IN

The State of Ohio, County of Muskingum, Township of Newton,  
being part of the Southwest Quarter of Section 6, T15, R14.

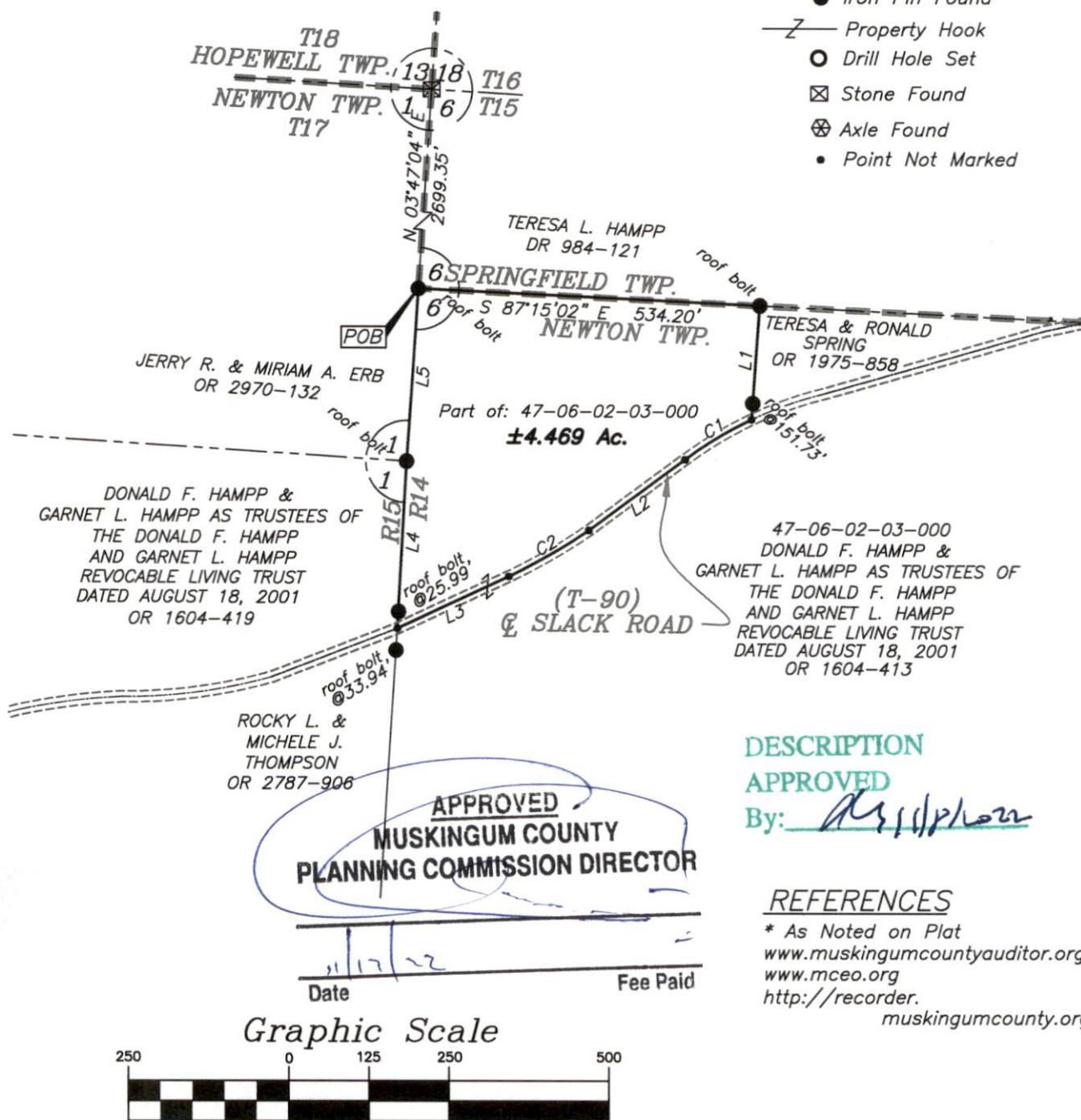
Survey Split

BASIS OF BEARING

Bearings are based on State Plane Grid Coordinates  
& Distances, NAD83, Ohio South, per GPS Observation.

LEGEND

- Iron Pin Set, 5/8" rebar
- Iron Pin Found
- Z— Property Hook
- Drill Hole Set
- ⊠ Stone Found
- ⊗ Axle Found
- Point Not Marked



DESCRIPTION

APPROVED

By: *[Signature]*

REFERENCES

- \* As Noted on Plat
- [www.muskingumcountyauditor.org](http://www.muskingumcountyauditor.org)
- [www.mceo.org](http://www.mceo.org)
- <http://recorder.muskingumcounty.org>

LINE TABLE

LINE	BEARING	DISTANCE
L1	S 04°06'19" W	177.16'
L2	S 53°56'55" W	185.83'
L3	S 65°06'55" W	191.91'
L4	N 03°08'54" E	258.88'
L5	N 03°50'36" E	268.73'

CURVE TABLE

CURVE	RADIUS	ARC LENGTH	CHORD LENGTH	CHORD BEARING	DELTA ANGLE
C1	614.69'	121.43'	121.23'	S 59°01'19" W	11°19'06"
C2	958.85'	144.15'	144.02'	S 60°06'33" W	8°36'49"



OFFICE COPY  
NOT RECORDABLE

Brian Kelly McPeck  
Reg. Surveyor No. 8517

This plat was prepared by McPeck Land Surveying, LLC  
in accordance with Chapter 4733-37 of the Administrative Code,  
and is intended to be used for the legal transfer of the property  
described and does not intend to describe all or any easements of  
record, nor encroachments unless otherwise intended.



**MCPECK  
LAND  
SURVEYING**  
LLC

[www.mcpecklandsurveying.com](http://www.mcpecklandsurveying.com)  
email: [brian@mcpecklandsurveying.com](mailto:brian@mcpecklandsurveying.com)  
340 Robin Hood Ln., \* Zanesville, Oh 43701 \* 740.704.6073