

Baseline Surveying, Inc.

Land Surveying and Construction Layout

3010 East Pike
Zanesville, OH 43701

Email: bei@rohio.com

Telephone (740) 453-4850
Fax (740) 450-1000

STEVE AND ELEANOR J. MILATOVICH

AUDITORS PARCEL NUMBER 47-47-22-02-03-002 (PART-8.153 ACRES)

AUDITORS PARCEL NUMBER 47-47-22-02-03-001 (PART-0.043 ACRES)

AUDITORS PARCEL NUMBER 47-47-22-02-03-003 (PART-1.586 ACRES)

TO BE COMBINED WITH AUDITORS PARCEL NUMBER 47-47-22-02-03-005

BEING A PART OF TRACTS CONVEYED TO STEVE AND ELEANOR J. MILATOVICH IN DEED VOLUME 891, PAGE 219, DEED VOLUME 960, PAGE 227, AND DEED VOLUME 1131, PAGE 93 OF THE MUSKINGUM COUNTY DEED RECORDS, SITUATED IN SECTION 8, TOWNSHIP 15, RANGE 14, OF THE CONGRESS LANDS EAST OF THE SCIOTO RIVER, NEWTON TOWNSHIP, MUSKINGUM COUNTY, OHIO AND BEING FURTHER DESCRIBED AS FOLLOWS:

COMMENCING AT AN EXISTING IRON PIN (5/8 INCH REBAR) AT THE NORTHWEST CORNER OF SAID SECTION 8;

THENCE WITH THE WEST LINE OF SECTION 8, SOUTH 03 DEGREES 00 MINUTES 10 SECONDS WEST, PASSING EXISTING IRON PINS (5/8 INCH REBAR) AT 38.00 FEET AND 613.27 FEET, A TOTAL DISTANCE OF 2295.68 FEET TO A POINT ON THE NORTH LINE OF A TRACT CONVEYED TO LINDA SUE DICKS AND JANICE E. BROWN BY DEED RECORDED IN OFFICIAL RECORDS VOLUME 1854, PAGE 302 OF THE MUSKINGUM COUNTY DEED RECORDS;

THENCE WITH THE SAID NORTH LINE THE NEXT 3 COURSES AND DISTANCES:

1. NORTH 81 DEGREES 38 MINUTES 45 SECONDS EAST 40.62 FEET (DEED) TO A POINT;
2. NORTH 74 DEGREES 03 MINUTES 30 SECONDS EAST 75.88 FEET (DEED) TO AN EXISTING IRON PIN (5/8 INCH REBAR);
3. NORTH 74 DEGREES 03 MINUTES 30 SECONDS EAST 26.43 FEET TO A POINT IN THE CENTER OF TOWNSHIP ROAD 276 (STINE ROAD);

THENCE WITH THE SAID CENTERLINE, WITH A CURVE TO THE RIGHT HAVING A RADIUS OF 990.00 FEET (CHORD BEARING SOUTH 21 DEGREES 35 MINUTES 58 SECONDS EAST 3.30 FEET, DELTA ANGLE 00 DEGREES 11 MINUTES 27 SECONDS) AN ARC LENGTH OF 3.30 FEET TO A POINT;

THENCE LEAVING THE SAID CENTERLINE AND WITH THE NORTH LINE OF TRACTS CONVEYED TO MATTHEW J. AND AUDRA J. MILATOVICH BY DEEDS RECORDED IN OFFICIAL RECORDS VOLUME 2003, PAGE 634, OFFICIAL RECORDS VOLUME 2038, PAGE 101 AND OFFICIAL RECORDS VOLUME 2487, PAGE 65, SOUTH 87 DEGREES 04 MINUTES 29 SECONDS EAST, PASSING AN EXISTING IRON PINS (5/8 INCH REBAR WITH CAP) AT 22.93 FEET AND 636.58 FEET, A TOTAL DISTANCE OF 684.96 FEET TO AN EXISTING IRON PIN (5/8 INCH REBAR WITH CAP), SAID IRON PIN BEING THE PLACE OF BEGINNING OF THE TRACT HEREIN INTENDED TO BE DESCRIBED;

THENCE CONTINUING SOUTH 87 DEGREES 04 MINUTES 29 SECONDS EAST (ALONG THE SOUTH LINE OF THE TRACT CONVEYED TO MYRA S. HARTMAN, TRUSTEE DEED VOLUME 1152, PAGE 324), 1319.33 FEET TO AN EXISTING IRON PIN (5/8 INCH REBAR WITH CAP);

THENCE LEAVING THE SAID HARTMAN SOUTH LINE AND WITH THE WEST LINE OF A TRACT CONVEYED TO RALPH AND CAROL LEE (DEED VOLUME 550, PAGE 422) THE NEXT TWO COURSES AND DISTANCES:

1. SOUTH 05 DEGREES 48 MINUTES 32 SECONDS WEST 273.74 FEET TO AN EXISTING IRON PIN (5/8 INCH REBAR);
2. SOUTH 08 DEGREES 53 MINUTES 46 SECONDS EAST 121.11 FEET TO AN IRON PIN SET, SAID IRON PIN BEING NORTH 08 DEGREES 53 MINUTES 46 SECONDS WEST 36.37 FEET FROM AN EXISTING IRON PIN (5/8 INCH REBAR);

THENCE LEAVING THE SAID WEST LINE AND TRAVERSING TROUGH THE ABOVE SAID STEVE AND ELEANOR J. MILATOVICH TRACTS (VOLUME 960, PAGE 227; VOLUME 891, PAGE 219 AND VOLUME 1131, PAGE 93) THE NEXT TWO COURSES AND DISTANCES:

1. NORTH 81 DEGREES 23 MINUTES 46 SECONDS WEST 1042.24 FEET TO AN IRON PIN SET;
2. NORTH 76 DEGREES 20 MINUTES 19 SECONDS WEST 349.04 FEET TO AN EXISTING IRON PIN (5/8 INCH REBAR WITH CAP);

THENCE WITH THE EAST LINE OF A 0.579 ACRE TRACT CONVEYED TO MATTHEW J. AND AUDRA J. MILATOVICH (OFFICIAL RECORDS VOLUME 2487, PAGE 65), NORTH 67 DEGREES 47 MINUTES 05 SECONDS EAST 31.80 FEET TO AN EXISTING IRON PIN (5/8 INCH REBAR WITH CAP);
5650 MILATOVICH

Baseline Surveying, Inc.

Land Surveying and Construction Layout

3010 East Pike
Zanesville, OH 43701

Email: bel@rroho.com

Telephone (740) 453-4850
Fax (740) 450-1000

THENCE CONTINUING WITH THE SAID EAST LINE, NORTH 08 DEGREES 36 MINUTES 08 SECONDS EAST 211.32 FEET TO THE PLACE OF BEGINNING.

CONTAINING 9.782 ACRES, SUBJECT TO ALL APPLICABLE EASEMENTS.

NOT TO BE USED AS A SEPARATE BUILDING SITE OR TRANSFERRED AS AN INDEPENDENT PARCEL IN THE FUTURE WITHOUT PLANNING COMMISSION APPROVAL IN ACCORDANCE WITH APPLICABLE SUBDIVISION REGULATIONS.

ALSO SUBJECT TO THE FOLLOWING INGRESS AND EGRESS EASEMENT

BEING A PART OF THE TRACT CONVEYED TO STEVE AND ELEANOR J. MILATOVICH IN DEED VOLUME 891, PAGE 219 OF THE MUSKINGUM COUNTY DEED RECORDS, SITUATED IN SECTION 8, TOWNSHIP 15, RANGE 14, OF THE CONGRESS LANDS EAST OF THE SCIOTO RIVER, NEWTON TOWNSHIP, MUSKINGUM COUNTY, OHIO AND BEING FURTHER DESCRIBED AS FOLLOWS:

COMMENCING AT AN EXISTING IRON PIN (5/8 INCH REBAR) AT THE NORTHWEST CORNER OF SAID SECTION 8;

THENCE WITH THE WEST LINE OF SECTION 8, SOUTH 03 DEGREES 00 MINUTES 10 SECONDS WEST, PASSING EXISTING IRON PINS (5/8 INCH REBAR) AT 38.00 FEET AND 613.27 FEET, A TOTAL DISTANCE OF 2295.68 FEET TO A POINT ON THE NORTH LINE OF A TRACT CONVEYED TO LINDA SUE DICKS AND JANICE E. BROWN BY DEED RECORDED IN OFFICIAL RECORDS VOLUME 1854, PAGE 302 OF THE MUSKINGUM COUNTY DEED RECORDS;

THENCE WITH THE SAID NORTH LINE THE NEXT 3 COURSES AND DISTANCES:

1. NORTH 81 DEGREES 38 MINUTES 45 SECONDS EAST 40.62 FEET (DEED) TO A POINT;
2. NORTH 74 DEGREES 03 MINUTES 30 SECONDS EAST 75.88 FEET (DEED) TO AN EXISTING IRON PIN (5/8 INCH REBAR);
3. NORTH 74 DEGREES 03 MINUTES 30 SECONDS EAST 26.43 FEET TO A POINT IN THE CENTER OF TOWNSHIP ROAD 276 (STINE ROAD);

THENCE WITH THE SAID CENTERLINE, WITH A CURVE TO THE RIGHT HAVING A RADIUS OF 990.00 FEET (CHORD BEARING SOUTH 21 DEGREES 35 MINUTES 58 SECONDS EAST 3.30 FEET, DELTA ANGLE 00 DEGREES 11 MINUTES 27 SECONDS) AN ARC LENGTH OF 3.30 FEET TO A POINT;

THENCE LEAVING THE SAID CENTERLINE AND WITH THE NORTH LINE OF TRACTS CONVEYED TO MATTHEW J. AND AUDRA J. MILATOVICH BY DEEDS RECORDED IN OFFICIAL RECORDS VOLUME 2003, PAGE 634, OFFICIAL RECORDS VOLUME 2038, PAGE 101 AND OFFICIAL RECORDS VOLUME 2487, PAGE 65, SOUTH 87 DEGREES 04 MINUTES 29 SECONDS EAST, PASSING AN EXISTING IRON PINS (5/8 INCH REBAR WITH CAP) AT 22.93 FEET AND 636.58 FEET, A TOTAL DISTANCE OF 684.96 FEET TO AN EXISTING IRON PIN (5/8 INCH REBAR WITH CAP);

THENCE WITH THE EAST LINE OF A 0.579 ACRE TRACT CONVEYED TO MATTHEW J. AND AUDRA J. MILATOVICH (OFFICIAL RECORDS VOLUME 2487, PAGE 65), SOUTH 08 DEGREES 36 MINUTES 08 SECONDS WEST 211.32 FEET TO AN EXISTING IRON PIN (5/8 INCH REBAR WITH CAP);

THENCE CONTINUING WITH THE SAID EAST LINE, SOUTH 67 DEGREES 47 MINUTES 05 SECONDS WEST 10.93 FEET TO A POINT, SAID POINT BEING THE PLACE OF BEGINNING OF THIS EASEMENT;

THENCE TRAVERSING THROUGH THE ABOVE SAID STEVE AND ELEANOR J. MILATOVICH TRACT (VOLUME 891, PAGE 219 AND VOLUME 1131, PAGE 93) THE NEXT 5 COURSES AND DISTANCES:

1. SOUTH 70 DEGREES 00 MINUTES 40 SECONDS EAST 54.49 FEET TO A POINT;
2. SOUTH 76 DEGREES 22 MINUTES 20 SECONDS EAST 94.15 FEET TO A POINT;
3. SOUTH 67 DEGREES 51 MINUTES 05 SECONDS EAST 43.01 FEET TO A POINT;
4. NORTH 76 DEGREES 20 MINUTES 19 SECONDS WEST 190.54 FEET TO A POINT;
5. NORTH 66 DEGREES 26 MINUTES 22 SECONDS WEST 14.08 FEET TO A POINT ON THE ABOVE SAID EAST LINE OF THE 0.579 ACRE TRACT (MATTHEW J. AND AUDRA J. MILATOVICH);

THENCE WITH THE SAID EAST LINE, NORTH 67 DEGREES 47 MINUTES 05 SECONDS EAST 16.75 FEET TO THE PLACE OF BEGINNING.

5650 MILATOVICH

Baseline Surveying, Inc.

Land Surveying and Construction Layout

3010 East Pike
Zanesville, OH 43701

Email: bei@rohio.com

Telephone (740) 453-4850
Fax (740) 450-1000

BEARINGS ARE BASED ON THE PREVIOUS SURVEY OF A 1.58 ACRES TRACT COMPLETED NOVEMBER 4, 2003 BY C. R. HARKNESS, PS 6885.

I HEREBY CERTIFY TO THE BEST OF MY KNOWLEDGE AND BELIEF THE SURVEY AND DESCRIPTION TO BE CORRECT AS PREPARED BY ME, THIS 20TH DAY OF SEPTEMBER, 2013 FROM A FIELD SURVEY COMPLETED BY ME ON THE 18TH DAY OF SEPTEMBER, 2013.

OFFICE COPY

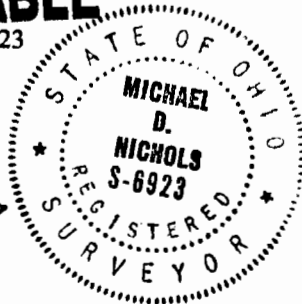
NOT RECORDABLE

MICHAEL D. NICHOLS
REGISTERED SURVEYOR 6923

DESCRIPTION

APPROVED

By



APPROVED
MUSKINGUM COUNTY
PLANNING COMMISSION DIRECTOR

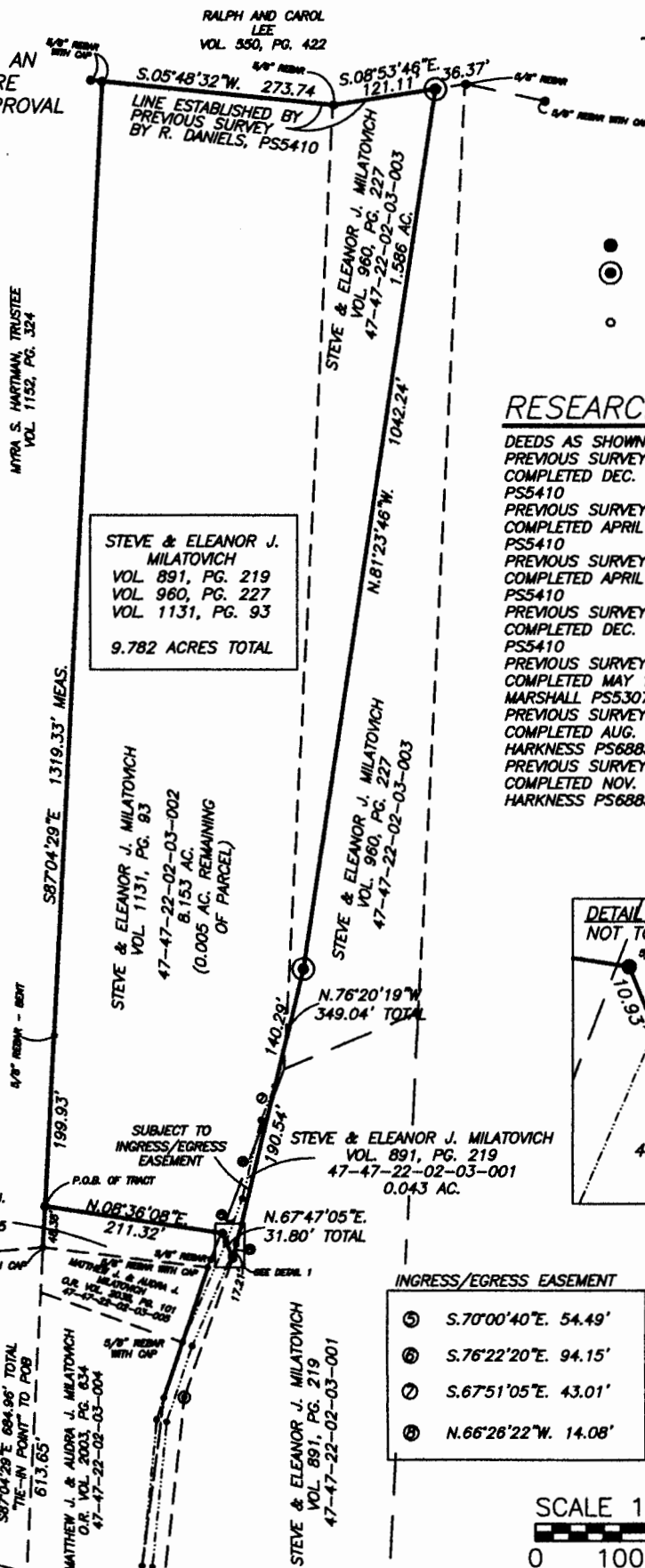
10/3/13
Date

Fee Paid

AUDITORS PARCEL NUMBERS

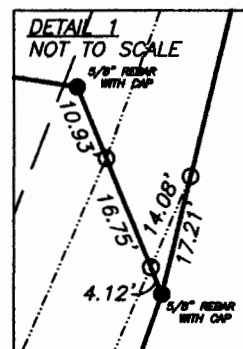
BEING A PART OF TRACTS CONVEYED TO STEVE AND ELEANOR J. MILATOVICH IN DEED VOLUME 891, PAGE 219, DEED VOLUME 960, PAGE 227 AND DEED VOLUME 1131, PAGE 93 OF THE MUSKINGUM COUNTY DEED RECORDS, SITUATED IN SECTION 8, TOWNSHIP 15, RANGE 14, OF THE CONGRESS LANDS EAST OF THE SCIOTO RIVER, NEWTON TOWNSHIP, MUSKINGUM COUNTY, OHIO.

NOT TO BE USED AS A SEPARATE
BUILDING SITE OR TRANSFERRED AS AN
INDEPENDENT PARCEL IN THE FUTURE
WITHOUT PLANNING COMMISSION APPROVAL
IN ACCORDANCE WITH APPLICABLE
SUBDIVISION REGULATIONS.



- EXISTING IRON PIN
- ⊙ IRON PIN SET
(5/8" REBAR W/CAP)
- ANGLE POINTS

DEEDS AS SHOWN
PREVIOUS SURVEY OF A 103.32 AC. TRACT
COMPLETED DEC. 28, 1985 BY R.L. DANIELS
PS5410
PREVIOUS SURVEY OF A 1.71 AC. TRACT
COMPLETED APRIL 5, 2005 BY R.L. DANIELS
PS5410
PREVIOUS SURVEY OF A 0.31 AC. TRACT
COMPLETED APRIL 5, 2005 BY R.L. DANIELS
PS5410
PREVIOUS SURVEY OF A 10.40 AC. TRACT
COMPLETED DEC. 8, 1996 BY R.L. DANIELS
PS5410
PREVIOUS SURVEY OF A 4.51 AC. TRACT
COMPLETED MAY 11, 1983 BY J.R.
MARSHALL PS5307
PREVIOUS SURVEY OF A 1.68 AC. TRACT
COMPLETED AUG. 3, 2011 BY C.R.
HARKNESS PS6885
PREVIOUS SURVEY OF A 1.58 AC. TRACT
COMPLETED NOV. 4, 2003 BY C.R.
HARKNESS PS6885



APPROVED
By: Matthew J. & Audra J. Milatovich
C.N. VOL. 2487, PG. 65

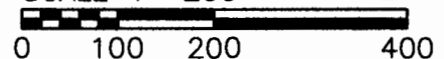
Approved for Transfer
No On-Lot Sewage
Zanesville-Muskingum Co.
Health Department

BEAU ALAN HARTMAN &
ALLIE EILEEN STARNER
D.R. VOL 2484, PG. 375

INGRESS/EGRESS EASEMENT

- ⑤ S.70°00'40"E. 54.49'
⑥ S.76°22'20"E. 94.15'
⑦ S.67°51'05"E. 43.01'
⑧ N.66°26'22"W. 14.08'

SCALE 1"=200'



APPROVED
MUSKINGUM COUNTY
PLANNING COMMISSION DIRECTOR

COMPLETED THE 10th DAY OF SEPTEMBER, 20

OFFICE COPY
NOT RECORDABLE

REGISTERED SURVEYOR #6923



THIS PROPERTY IS SUBJECT TO ALL EASEMENTS, RIGHT OF WAYS, OR RESTRICTIONS, WHETHER RECORDED OR IMPLIED. THIS PLAT, PREPARED IN ACCORDANCE WITH CHAPTER 4733-37 OF THE ADMINISTRATIVE CODE, IS INTENDED FOR THE LEGAL TRANSFER OF THE PROPERTY SHOWN AND DOES NOT INTEND TO SHOW ANY OR ALL OF THE EASEMENTS, RIGHT OF WAYS, RESTRICTIONS OR ENCROACHMENTS UNLESS OTHERWISE INDICATED.

3010 EAST PIKE, ZANESVILLE, OHIO 43701

phone: 740-453-4850, fax: 740-450-1000, email: BEI@rrbio.com

DRAWN BY: JW L

DATE: 09-20-13

SCALE: 1"=200'

CHECKED BY: MDN

JOB NO: 5650

DRAWING NO:
Z:\5650\MILATOVICH.dwg