



# CANNON LAND SURVEYING

7945 TWP RD. 114 NE  
NEW LEXINGTON, OHIO 43764  
614-342-2835

## DEED DESCRIPTION

Situated in the State of Ohio, County of Muskingum, Township of Newton, T-15, R-14, being a part of R. Fraunfelter V 522 P 898, being part of Section 14, and more particularly described as follows:

Beginning at a stone at the Southwest Corner of Section 14; thence along the West line of Section 14 North 00 Degrees 18 Minutes 02 Seconds East 1607.15 feet to a point on the North bank of the South Fork of the Moxahala Creek, passing an iron pin set at 1457.15 feet; thence along said North bank the following 21 courses to points: South 45 Degrees 35 Minutes 59 Seconds East 355.21 feet; thence North 88 Degrees 50 Minutes 32 Seconds East 132.90 feet; thence North 59 Degrees 25 Minutes 33 Seconds East 438.13 feet; thence North 29 Degrees 10 Minutes 53 Seconds East 302.01 feet; thence North 50 Degrees 19 Minutes 06 Seconds West 330.50 feet; thence North 24 Degrees 24 Minutes 03 Seconds West 129.17 feet; thence North 14 Degrees 41 Minutes 04 Seconds West 179.33 feet; thence North 19 Degrees 37 Minutes 03 Seconds East 926.36 feet; thence North 24 Degrees 26 Minutes 26 Seconds East 473.48 feet; thence North 02 Degrees 47 Minutes 25 Seconds East 266.35 feet; thence North 12 Degrees 45 Minutes 51 Seconds East 165.22 feet; thence North 12 Degrees 59 Minutes 40 Seconds East 192.36 feet; thence North 46 Degrees 41 Minutes 56 Seconds East 649.56 feet; thence North 20 Degrees 36 Minutes 30 Seconds East 236.02 feet; thence North 46 Degrees 30 Minutes 20 Seconds East 125.66 feet; thence North 85 Degrees 42 Minutes 04 Seconds East 141.42 feet; thence South 48 Degrees 52 Minutes 44 Seconds East 355.10 feet; thence South 61 Degrees 46 Minutes 22 Seconds East 516.47 feet; thence North 80 Degrees 37 Minutes 14 Seconds East 190.64 feet; thence North 39 Degrees 54 Minutes 15 Seconds East 374.35 feet; thence North 16 Degrees 12 Minutes 05 Seconds East 559.85 feet; thence leaving said bank along the North line of Section 14 North 89 Degrees 58 Minutes 34 Seconds East 2188.89 feet to an iron pin set at the Northeast Corner of Section 14, passing an iron pin set at 113.93 feet and an iron pin found at 1490.82 feet and an iron pin set at the centerline of County Road 46 at 1518.82 feet; thence along the East line of Section 14 South 00 Degrees 32 Minutes 40 Seconds West 1262.28 feet to an iron pin set; thence leaving said East line South 88 Degrees 47 Minutes 18 Seconds West 761.59 feet to an iron pin set in the centerline of County Road 46; thence along said road South 20 Degrees 12 Minutes 15 Seconds West 223.24 feet to a point in said road; thence leaving said road North 61 Degrees 02 Minutes 15 Seconds West 1018.38 feet to a point, passing iron pins set at 54.08 and at 976.91 feet; thence South 00 Degrees 02 Minutes 15 Seconds East 1073.82 feet to an iron pin set; thence North 89 Degrees 57 Minutes 45 Seconds East 232.46 feet to an iron pin set; thence South 00 Degrees 00 Minutes 00 Seconds East 654.37 feet to an iron pin found; thence South 90 Degrees 00 Minutes 00



# CANNON LAND SURVEYING

7945 TWP RD. 114 NE  
NEW LEXINGTON, OHIO 43764  
614-342-2835

Seconds East 60.00 feet to an iron pin found; thence South 00 Degrees 00 Minutes 00 Seconds West 818.78 feet to a point in the centerline of Township Road 264, passing an iron pin found at 798.78 feet; thence along said centerline the next 8 courses to points: thence South 77 Degrees 54 Minutes 07 Seconds West 200.77 feet; thence South 56 Degrees 07 Minutes 58 Seconds West 194.76 feet; thence South 46 Degrees 23 Minutes 12 Seconds West 172.71 feet; thence South 55 Degrees 42 Minutes 13 Seconds West 141.67 feet; thence South 72 Degrees 04 Minutes 57 Seconds West 195.65 feet; thence South 82 Degrees 39 Minutes 04 Seconds West 182.15 feet; thence South 63 Degrees 27 Minutes 19 Seconds West 194.78 feet; thence South 44 Degrees 48 Minutes 15 Seconds West 207.50 feet to an iron pin set; thence leaving said road South 01 Degrees 26 Minutes 35 Seconds West 1220.54 feet to an axle found at the Southeast Corner of the Southwest Quarter of Section 14; thence along the South line of Section 14 North 89 Degrees 36 Minutes 31 Seconds West 2683.46 feet to the place of beginning, containing 368.43 acres, more or less, subject to all legal highways and easements.

Excepting the following railroad.

Beginning at a stone at the Southwest Corner of Section 14; thence along the West line of Section 14 North 00 Degrees 18 Minutes 02 Seconds East 722.47 feet to a point on the South line of the Penn Central Railroad and the place of beginning; thence continuing along said line North 00 Degrees 18 Minutes 02 Seconds East 227.86 feet to a point on the North line of said railroad; thence along said railroad North 26 Degrees 19 Minutes 56 Seconds East 496.15 feet to a point on the West line of said railroad and the North bank of the South Fork of the Moxahala Creek; thence South 45 Degrees 35 Minutes 59 Seconds East 52.00 feet to a point; thence North 88 Degrees 50 Minutes 32 Seconds East 57.00 feet to a point on the East line of said railroad; thence along said railroad South 26 Degrees 19 Minutes 56 Seconds West 711.07 feet to the place of beginning containing 1.36 acres, more or less, subject to all legal highways and easements.

Beginning at a stone at the Southwest Corner of Section 14; thence North 00 Degrees 18 Minutes 02 Seconds East 722.47 feet to a point on the South line of the Penn Central Railroad; thence along said railroad North 26 Degrees 19 Minutes 56 Seconds East 1491.12 feet to a point on said railroad and the place of beginning; thence North 24 Degrees 24 Minutes 03 Seconds West 129.17 feet to a point on the North line of said railroad; thence along said railroad North 26 Degrees 19 Minutes 56 Seconds East 827.74 feet to a point; thence 1106.15 feet on a curve to the right, having a radius of 1859.26 feet, the chord bears North 43 Degrees 22 Minutes 34 Seconds East 1089.91 feet to a point; thence North 59 Degrees 08 Minutes 28 Seconds East 1038.78 feet to a point; thence 113.80 feet on a curve to



# CANNON LAND SURVEYING

7945 TWP RD. 114 NE  
NEW LEXINGTON, OHIO 43764  
614-342-2835

the left, having a radius of 1669.59 feet, the chord bears North 55 Degrees 41 Minutes 40 Seconds East 113.78 feet to a point; thence North 00 Degrees 00 Minutes 58 Seconds West 6.20 feet to a point; thence 1229.36 feet on a curve to the left, having a radius of 1664.59 feet, the chord bears North 32 Degrees 27 Minutes 29 Seconds East 1201.61 feet to a point; thence North 11 Degrees 32 Minutes 39 Seconds East 83.90 feet to an iron pin set; thence North 89 Degrees 58 Minutes 34 Seconds East 112.13 feet to a point; thence South 11 Degrees 32 Minutes 39 Seconds West 106.12 feet to a point; thence 1389.90 feet on a curve to the right, having a radius of 1774.44 feet, the chord bears South 33 Degrees 44 Minutes 48 Seconds West 1354.64 feet to a point; thence North 00 Degrees 00 Minutes 58 Seconds West 5.84 feet to a point; thence 48.38 feet on a curve to the right, having a radius of 1769.59 feet, the chord bears South 56 Degrees 51 Minutes 49 Seconds West 48.38 feet to a point; thence South 59 Degrees 08 Minutes 28 Seconds West 1043.62 feet to a point; thence 1046.65 feet on a curve to the left, having a radius of 1759.26 feet, the chord bears South 43 Degrees 22 Minutes 34 Seconds West 1031.29 feet to a point; thence South 26 Degrees 19 Minutes 56 Seconds West 909.50 feet to the place of beginning, containing 11.48 acres, more or less, subject to all legal highways and easements.

Leaving after said railroad 355.59 acres, more or less.

See plat attached.

Subject to County Road 46 and Township Road 246 R/W.

Iron pins set are 5/8 inch rebar with plastic identification caps.

Bearings are based on the South line of Section 14 as being North 89 Degrees 36 Minutes 31 Seconds West.

This survey is subject to any facts that may be disclosed by a full and accurate title search.

This description was written from a survey made December 18, 1991.

Parcel # 47-50-14-01, 47-50-14-04-001, 47-50-14-07, 47-50-14-08, 47-50-14-13, 47-50-14-14, 47-50-14-15 all.

47-50-14-16

**OFFICE COPY  
NOT RECORDABLE**  
Reg. No. 7224

12/18/91  
Date

DESCRIPTION APPROVED  
FOR AUDITOR'S TRANSFER

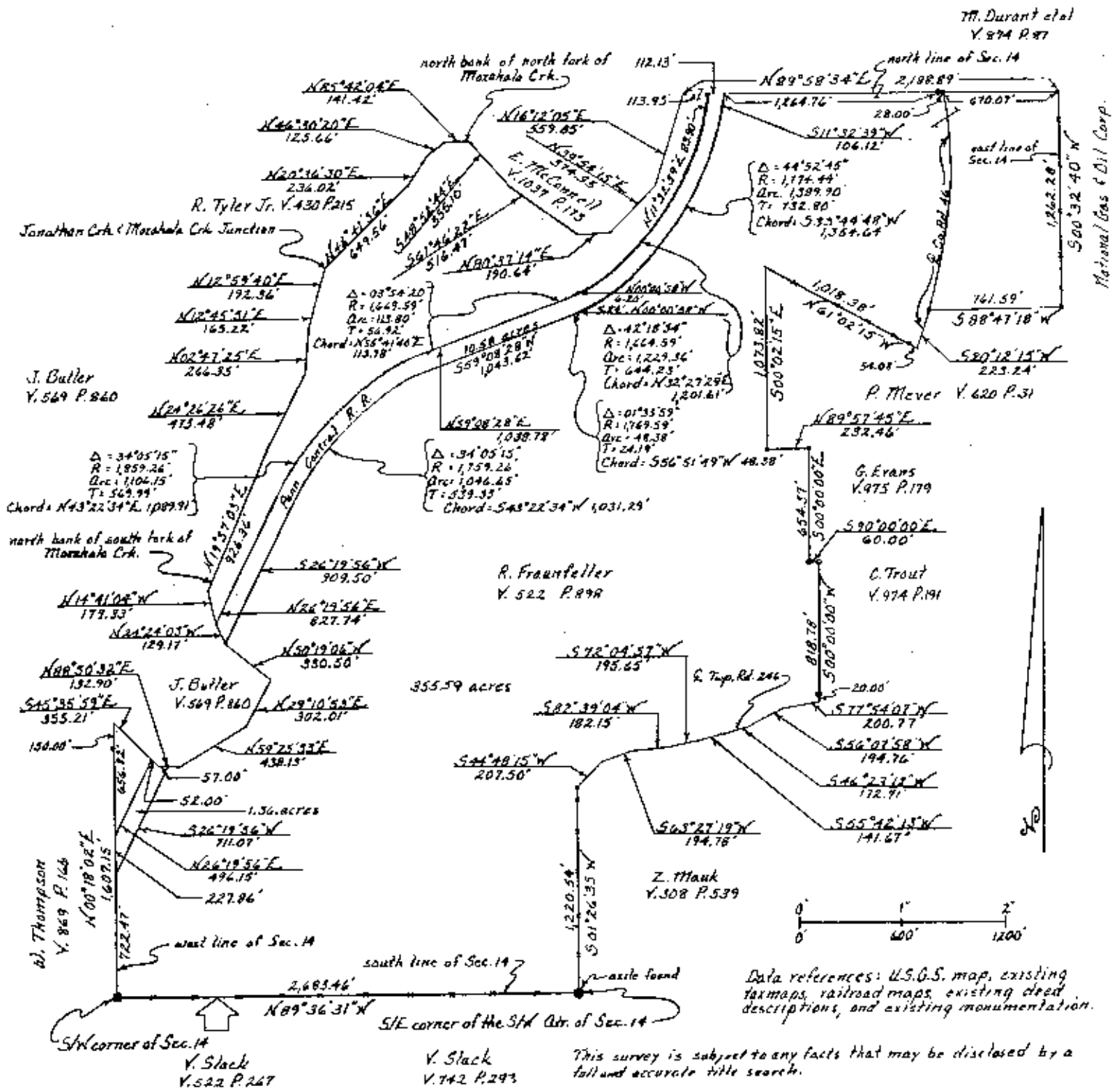
BY J. S. Nambel  
12/26/91





# CANNON LAND SURVEYING

7945 TWP RD. 114 NE  
NEW LEXINGTON, OHIO 43764  
614-342-2835



DESCRIPTION APPROVED  
FOR AUDITOR'S TRANSFER

By J. L. Cannon 12/19/91

**OFFICE COPY**  
**NOT RECORDABLE**

Survey For: \_\_\_\_\_

State: Ohio  
County: Muskingum  
Township: Newport  
T- 15 R- 14 Lot: N/A  
Section: 14  
City or Village: N/A  
Subdivision: N/A  
Parcel #: \_\_\_\_\_  
Scale: 1" = 600'

- Iron Pin Set 5/8" rebar w/I.D. cap
- Iron Pin Found
- Post
- Fence
- R.R. Spike Set
- R.R. Spike Found
- Hole
- Stone
- PK Nail Set
- PK Nail Found
- Basis of Bearings