

BOWMAN SURVEYING  
38 N. 4<sup>th</sup> Street, Rm. 103  
Zanesville, Ohio 43701  
PH. (740) 454-0496

47-29-03-52  
47-50-15-01  
47-50-14-04

**SURVEY DESCRIPTION  
FOR  
Ruth Weeks Tyler**

**All OF AUDITORS PARCEL**

47-29-03-52-000, 47-29-03-62-000,  
47-29-03-00-801, 47-29-04-00-806, (Railroad lands (D.B. 640/082)  
47-50-14-04-000, 47-50-14-05-000,  
47-50-15-01-000, 47-50-15-25-001.  
77.526 acres total

Situated in Sections 10, 11, 14, and 15, T-15, R-14, Newton Township, Muskingum County, Ohio. Being part of the lands of Ruth Weeks Tyler, Trustee, conveyed in Deed Book 430 page 215 and all the lands conveyed in Deed Book 640 page 82 of the Muskingum County Deed records and being described as follows:

Commencing at the Northwest corner of the Northwest quarter of section 14; thence, **N.89°16'47"E.** a distance of 267.91 along the North line of section 14 to a found iron pin, Being the point of Beginning;

Thence, **N.89°16'47"E.** a distance of 1,236.89 feet along the North line of section 14 to a set rebar, passing a found iron pin at 1,065.08';

Thence, **S.18°16'47"W.** a distance of 50.00 feet leaving said section line and along the lands, now or formerly, owned by D. McConnell, Et Al, (1093/535) to a set rebar;

Thence, **S.77°50'23"E.** a distance of 404.60 feet along said McConnell lands to a set rebar;

Thence, **S.04°14'29"W.** a distance of 213.12 feet along said McConnell lands to a set rebar on the West bank of Moxahala Creek;

Thence, **S.70°32'12"W.** a distance of 109.58 feet along said bank to a point;

Thence, **S.35°33'11"W.** a distance of 130.10 feet along said bank to a point;

Thence, **S.03°51'55"W.** a distance of 177.21 feet along said bank to a point;

Thence, **S.31°29'14"W.** a distance of 197.49 feet along said bank to a point;

Thence, **S.53°14'03"W.** a distance of 368.72 feet along said bank to a point;

Thence, **S.35°23'13"W.** a distance of 230.82 feet along said bank to a point at the intersection of the North bank of Jonathan Creek;

Thence, **N.47°23'13"W.** a distance of 173.37 feet along said bank to a point;

Thence, **N.64°43'50"W.** a distance of 304.08 feet along said bank to a point;

Thence, **N.81°57'03"W.** a distance of 118.97 feet along said bank to a point;

Thence, **N.79°58'58"W.** a distance of 93.56 feet leaving said creek bank to a point on the Southwest corner of an existing bridge abutment;

Thence, **S.84°59'11"W.** a distance of 109.43 feet to a set rebar along the North line of the lands, now or formerly, owned by J. & D. Butler (1784/751) located on the North side of Jonathan Creek;

- Thence, **N.78°12'00"W.** a distance of **433.30** feet along said Butler lands to set rebar on the East line of section 15;
- Thence, **S.00°00'00"W.** a distance of **72.97** feet along said section line to a point in the center of Jonathan Creek;
- Thence, **S.89°38'11"W.** a distance of **165.65** feet along said centerline and Butler lands to a point;
- Thence, **S.79°13'05"W.** a distance of **142.02** feet along said centerline and Butler lands to a point;
- Thence, **S.65°06'23"W.** a distance of **115.33** feet along said centerline and Butler lands to a point;
- Thence, **N.35°30'26"E.** a distance of **146.18** feet leaving said centerline and along said Butler lands to a set rebar;
- Thence, **S.78°46'26"W.** a distance of **73.41** feet along said Butler lands to a set rebar, located on the north side of Jonathan Creek;
- Thence, **S.81°13'20"W.** a distance of **206.09** feet along said Butler lands to a set rebar, located on the north side of Jonathan Creek;
- Thence, **N.78°46'50"W.** a distance of **158.10** feet along said Butler lands to a set rebar, located on the north side of Jonathan Creek;
- Thence, **N.47°13'41"W.** a distance of **310.50** feet along said Butler lands to a set rebar, located on the north side of Jonathan Creek;
- Thence, **N.55°56'42"W.** a distance of **512.40** feet along said Butler lands and along the lands, now or formerly, owned by R. Evans (1129/212), T. Evans (1863/036), and T. Morrison (1110/279) to a found iron pin, passing a found iron pin at 390.15';
- Thence, **N.45°07'54"W.** a distance of **292.65** feet along said Morrison lands and the lands, now or formerly, owned by W. Morozowsky (1133/279) to a set rebar, passing a found iron pin at 136.48';
- Thence, **N.36°19'51"W.** a distance of **218.14** feet along said Morozowsky and the lands, now or formerly, owned by S. Pletcher (1840/901) to a set rebar on the South line of Section 10;
- Thence, **S.89°03'22"W.** a distance of **115.87** feet along said section line to a point in the center of Jonathan Creek;
- Thence, **N.30°31'18"E.** a distance of **80.35** feet leaving Jonathan Creek and along the lands, now or formerly, owned by J. Grundy (2001/792) to a point on the east bank of Jonathan Creek;
- Thence, **N.23°32'05"W.** a distance of **231.30** feet along Grundy lands to a found iron pin;
- Thence, **N.53°32'12"W.** a distance of **528.06** feet along Grundy lands to a set rebar;
- Thence, **N.49°36'02"W.** a distance of **163.71** feet along Grundy lands to a point on the east line of the lands, now or formerly, owned by L. Hampton (1144/754);
- Thence, **N.30°30'32"E.** a distance of **89.57** feet along Hampton lands to a set rebar, passing a set rebar at 25.00';

- Thence, **S.72°27'28"E.** a distance of **981.50** feet along the South line of the lands, now or formerly, owned by V. Norman (1082/034) to a set rebar on the West line of Southern Hills Subdivision;
- Thence, **S.00°27'28"E.** a distance of **420.74** feet along the West line of said Subdivision to a found iron pin;
- Thence, **N.84°50'18"E.** a distance of **742.70** feet along the South line of said Subdivision to a found iron pin;
- Thence, **N.84°56'33"E.** a distance of **357.69** feet along the South line of the lands, now or formerly, owned by Maysville Local School (1156/113) to a found iron pin;
- Thence, on a curve to the right and arc distance of 617.22', with a radius of 1,176.28', whose chord bears, **S.80°08'03"E.** a distance of **610.16** feet along said School lands to a found iron pin;
- Thence, **S.65°34'37"E.** a distance of **52.25** feet along said School lands to the point of beginning.

The above described parcel contains 77.526 acres, more or less, 11.387 acres in section 10, 0.346 acres in section 11, 38.728 acres in section 14, and 27.065 acres in section 15, and is subject to all legal easements and right of ways. All set rebars are 5/8" x 30" rebars with plastic I.D. caps. North is based upon an assumed meridian.

Description was prepared from an actual field survey by Bowman Surveying, Stephen M. Bowman, P.S.#7135. April 12, 2007.

APPROVED FOR CLOSURE

*[Signature]* 4/17/07

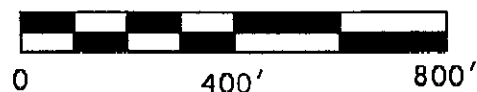
EXEMPT FROM  
PLANNING COMMISSION

*[Signature]* 4/17/07

OFFICE COPY  
NOT RECORDABLE

NORTH IS BASED UPON  
AN ASSUMED MERIDIAN

SCALE 1" = 400'



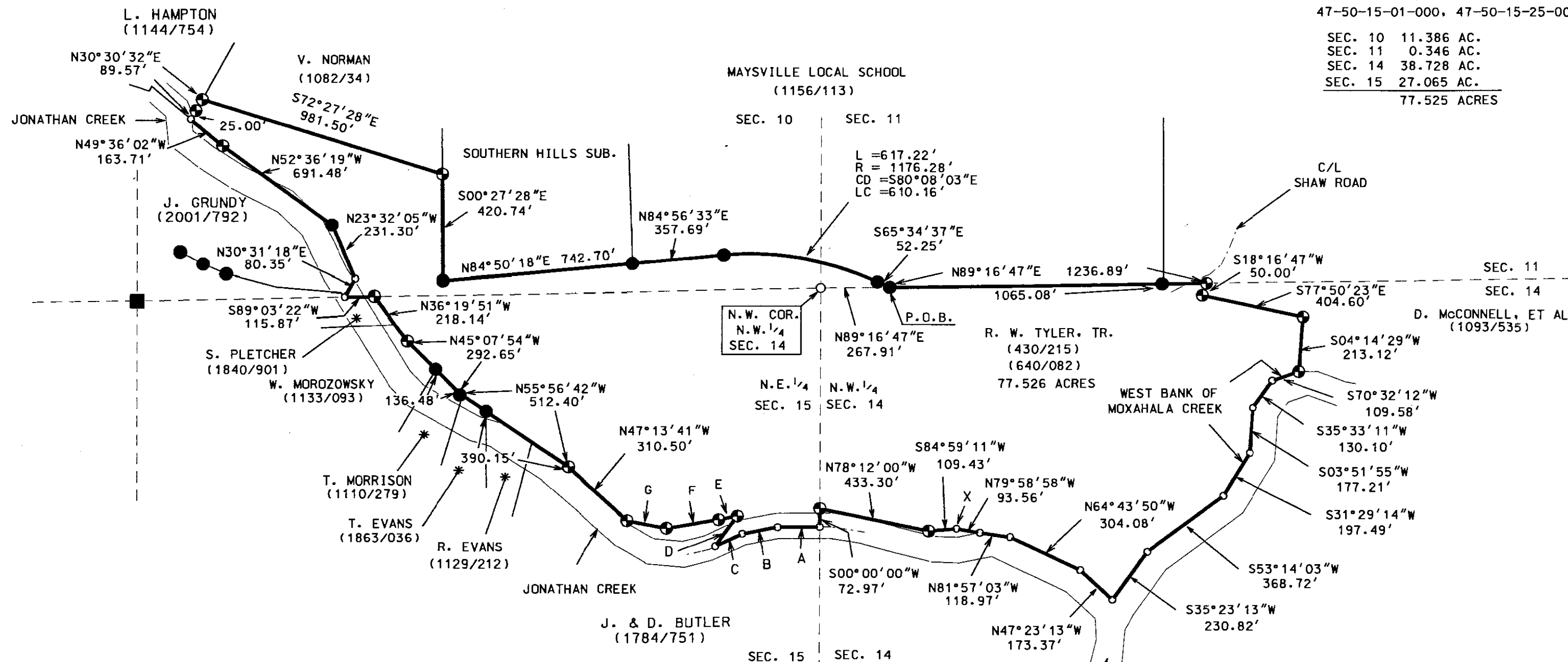
# SURVEY PLAT FOR RUTH WEEKS TYLER

SITUATED IN SECTIONS 10, 11, 14 AND 15, T-15, R-14, NEWTON TOWNSHIP  
MUSKINGUM COUNTY, OHIO.

## AUDITORS PARCELS

47-29-03-00-801, 47-29-04-00-806  
47-29-03-52-000, 47-29-03-62-000  
47-50-14-04-000, 47-50-14-05-000  
47-50-15-01-000, 47-50-15-25-001

SEC. 10 11.386 AC.  
SEC. 11 0.346 AC.  
SEC. 14 38.728 AC.  
SEC. 15 27.065 AC.  
77.525 ACRES



## LEGEND

- STONE FOUND
- IRON PIN FOUND
- ⊕ 5/8" X 30" REBAR SET W/ I.D. CAP
- POINT

- A S89°38'11"W 165.65'  
B S79°13'05"W 142.02'  
C S65°06'23"W 115.33'  
D N35°30'26"E 146.18'  
E S78°46'26"W 73.41'  
F S81°13'20"W 206.09'  
G N78°46'50"W 158.10'  
X S.W. COR. OF STONE BRIDGE ABUTMENT

APPROVED FOR CLOSURE

*[Signature]* 9/17/2007

EXEMPT FROM  
PLANNING COMMISSION

*[Signature]* 9/17/2007

I CERTIFY THIS DRAWING WAS PREPARED  
FROM AN A FIELD SURVEY I CONDUCTED

**OFFICE COPY  
NOT RECORDABLE**

STEPHEN M. BOWMAN S #7135

**BOWMAN SURVEYING**

38 N. 4TH STREET  
ZANESVILLE, OHIO 43701  
PHONE/FAX 740-454-0496

JOB: M-07044

DATE: 04/12/07