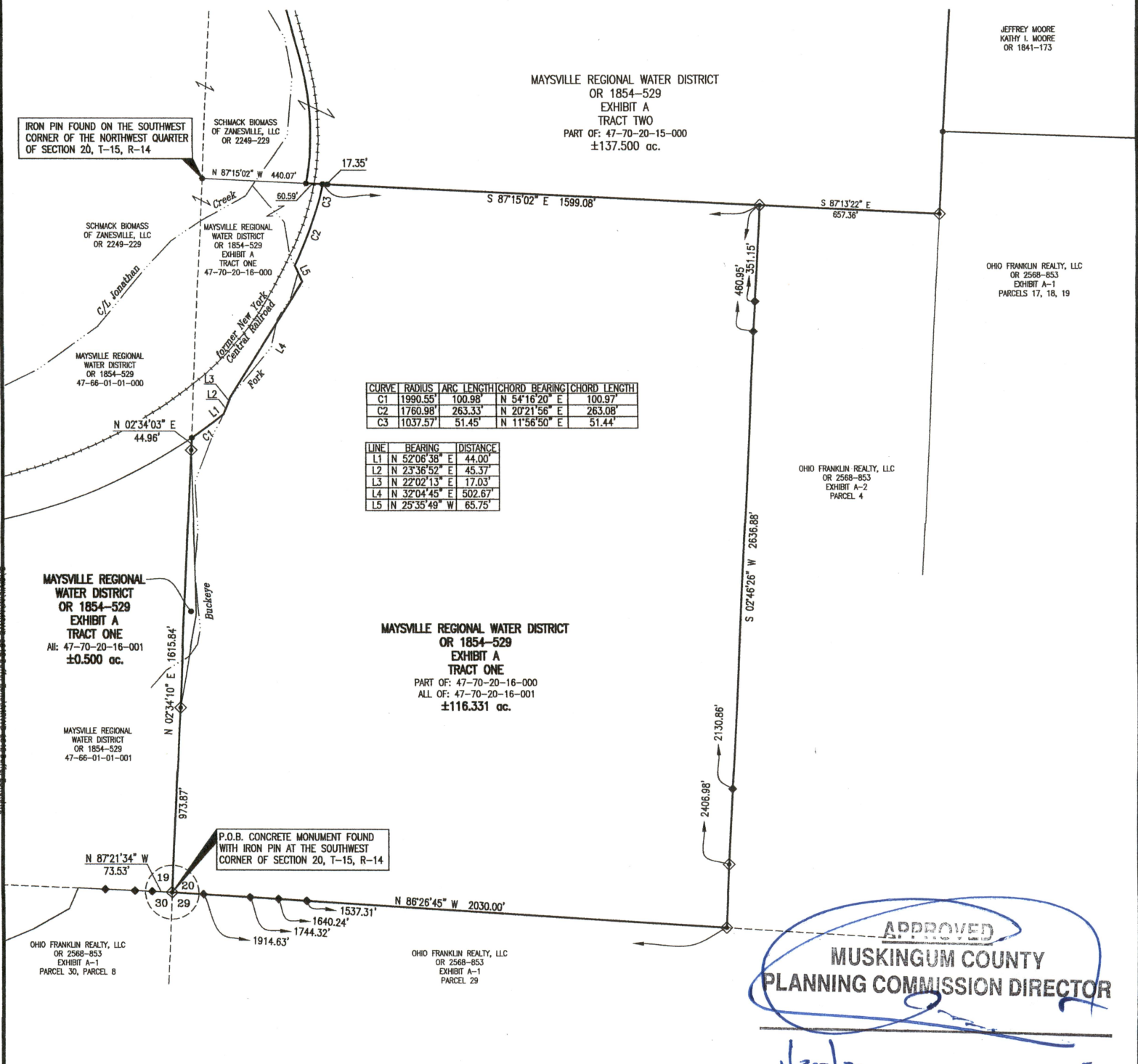


4770-2016-001 B



CURVE	RADIUS	ARC LENGTH	CHORD BEARING	CHORD LENGTH
C1	1990.55'	100.98'	N 54°16'20" E	100.97'
C2	1760.98'	263.33'	N 20°21'56" E	263.08'
C3	1037.57'	51.45'	N 11°56'50" E	51.44'

LINE	BEARING	DISTANCE
L1	N 52°08'38" E	44.00'
L2	N 23°36'52" E	45.37'
L3	N 22°02'13" E	17.03'
L4	N 32°04'45" E	502.67'
L5	N 25°35'49" W	65.75'

APPROVED
MUSKINGUM COUNTY
PLANNING COMMISSION DIRECTOR

PARCEL NUMBER
Part of: 47-70-20-16-000 ± 115.831 ac.
All of: 47-70-20-16-001 ± 0.500 ac.
Total ± 116.331 ac.

LEGEND
● Iron Pin Found
◆ Concrete Monument Found w/iron pin
◆ Drill Steel Found

SITUATED IN
Southwest Quarter of Section 20,
T-15, R-14, Congress Lands East of
the Scioto River, Newton Township,
Muskingum County, Ohio.

BASIS OF BEARINGS
Bearings are based on NAD 83,
Ohio State Plane Coordinate
System, South Zone, Grid North,
as per GPS observations made on
November 8, 2018.

REFERENCES
As shown on plot.
Surveys by:

Charles R. Harkness, PS #6885
Jack D. Newcome, PS #7321
Timothy H. Linn, PS #7113

DESCRIPTION
APPROVED
By: *Mc/ho/ho/21*

Date 1/20/21 Fee Paid



OFFICE COPY
NOT RECORDABLE
Timothy H. Linn, PS
Reg. Surveyor No. 7113

	200' 0 400'
	Revision Description Date
	Drawn by: JAP, THL, CS Checked by: THL Scale: 1"=400'
MAYSVILLE REGIONAL WATER DISTRICT SPLIT OF OR 1854, PAGE 529 EXHIBIT A, TRACT ONE Part of: 47-70-20-16-000 ±115.831 ac. All of: 47-70-20-16-001 ±0.500 ac.	
Linn Engineering, Inc. 740-452-7434 Civil Engineering Consultants P.O. Box 2086 Zanesville, Ohio 43702-2086	