



Linn Engineering, Inc.

Civil Engineering Consultants

534 Market Street • P.O. Box 2671 • Zanesville, Ohio 43702-2671

47-66-01-01-001
47-82-30-20
47-80-01-01
614-452-7434

Situated in the State of Ohio, County of Muskingum, Township of Newton, bounded and described as follows:

Being a part of the South Half of Section 19, a part of the Southwest Quarter of Section 20, and part of the North Half of Section 30, Township 15 North, Range 14 West and being a part of Tract Five and all of Tract Six of lands described in Muskingum County Deed Record 1035, Page 553 - 568, more particularly described as follows;

Beginning at the southeast corner of Section 19, thence along the north line of lands now owned by Ohio Power Co. (DR 305-290) North 85 degrees 30 minutes 51 seconds West 345.59 feet to the centerline of Buckeye Creek, passing drill steels found at 73.60 feet, 136.52 feet, and 245.37 feet; thence along the centerline of Buckeye Creek the following four courses: 1) South 26 degrees 32 minutes 00 seconds West 84.32 feet to a point; 2) South 62 degrees 45 minutes 11 seconds West 148.21 feet to a point; 3) South 69 degrees 49 minutes 08 seconds West 134.42 feet to a point on the northeast corner of lands now owned by L. Cannon (DR 210-80); 4) South 32 degrees 54 minutes 07 seconds West 58.80 feet to a point; thence along Cannon's north line the following nine courses: 1) South 04 degrees 37 minutes 34 seconds West 75.42 feet to a concrete monument set, from which a drill steel bears North 03 degrees 12 minutes 47 seconds West 8.94 feet; 2) South 53 degrees 25 minutes 34 seconds West 286.00 feet to a concrete monument set, from which a drill steel bears North 17 degrees 09 minutes 39 seconds West 9.69 feet; 3) South 65 degrees 00 minutes 34 seconds West 346.00 feet to an iron pipe found, from which a drill steel bears North 14 degrees 28 minutes 25 seconds West 11.55 feet and a second drill steel bears North 62 degrees 59 minutes 05 seconds West 23.74 feet; 4) South 89 degrees 16 minutes 07 seconds West 258.05 feet to an iron pipe found; 5) North 79 degrees 57 minutes 56 seconds West 269.12 feet to a concrete monument set, from which a drill steel bears North 69 degrees 34 minutes 21 seconds East 21.16 feet; 6) South 74 degrees 43 minutes 34 seconds West 135.00 feet to a concrete monument set, from which a drill steel bears North 13 degrees 10 minutes 56 seconds West 12.82 feet; 7) South 68 degrees 45 minutes 34 seconds West 218.00 feet to a railroad iron found, from which a drill steel bears North 88 degrees 42 minutes 16 seconds West 32.16 feet; 8) South 71 degrees 07 minutes 34 seconds West 679.94 feet to a concrete monument set; 9) North 04 degrees 39 minutes 24 seconds East 77.89 feet to a concrete monument set; 10) North 04 degrees 39 minutes 24 seconds East 39.41 feet to a point on the centerline of Buckeye Creek; thence along the centerline of Buckeye Creek the following nine courses: 1) North 67 degrees 52

minutes 27 seconds West 171.17 feet to a point; 2) North 19 degrees 17 minutes 27 seconds West 252.24 feet to a point; 3) North 23 degrees 21 minutes 52 seconds West 124.56 feet to a point; 4) North 38 degrees 43 minutes 59 seconds West 53.88 feet to a point; 5) North 63 degrees 45 minutes 55 seconds West 164.38 feet to a point; 6) North 57 degrees 13 minutes 38 seconds West 140.49 feet to a point; 7) North 26 degrees 31 minutes 03 seconds West 167.13 feet to a point; 8) North 16 degrees 06 minutes 05 seconds West 81.24 feet to a point; 9) North 04 degrees 21 minutes 55 seconds West 83.30 feet to a point on the south line of lands now owned by E. and E. Cannon (DR 880-278); thence along said south line North 68 degrees 51 minutes 21 seconds East 276.80 feet to a drill steel found in Lot 73 of Cannon's Third Addition as the same is designated and delineated on Plat Book 2, Page 143A; thence passing through Lots 73, 74, 75 and part of Lot 76 South 85 degrees 12 minutes 39 seconds East 355.58 feet to a concrete monument found, passing a concrete monument found at 128.77 feet in Lot 76; thence North 34 degrees 44 minutes 15 seconds East 172.47 feet to a point on the west side of Fourth Street and the east side of Lot 64 in said subdivision; thence along the west line of Fourth Street to the southeast line of said subdivision South 04 degrees 50 minutes 58 seconds West 94.47 feet to a point; thence along said subdivision line North 51 degrees 16 minutes 39 seconds East 54.04 feet to an iron pin found; thence along the east side of Fourth Street and the west line of Lot 65 in said subdivision North 05 degrees 41 minutes 31 seconds East 55.58 feet to point; thence South 84 degrees 18 minutes 16 seconds East 65.00 feet to a point, passing through Lot 65 to the southeast line of said subdivision and the southwest corner of Lot 66; thence North 34 degrees 52 minutes 40 seconds East 229.40 feet to a concrete monument found on the north line of Lot 7 of said subdivision; thence North 04 degrees 45 minutes 11 seconds East 320.45 feet to a concrete monument found on the northwest corner of Lot 14; thence South 85 degrees 08 minutes 32 seconds East 60.11 feet to an iron pin found on the northeast corner of Lot 14; thence North 04 degrees 45 minutes 08 seconds East 529.96 feet to a concrete monument found on the southeast corner of Lot 56 of Hoover's Second Addition to East Fultonham as the same is designated and delineated on Plat Book 2, Page 44; thence South 84 degrees 53 minutes 44 seconds East 380.04 feet to a point; thence North 89 degrees 26 minutes 20 seconds East 1039.37 feet to a concrete monument set; thence on a curve to the left having a radius of 1990.55 feet, a central angle of 31 degrees 42 minutes 57 seconds and a chord bearing North 73 degrees 34 minutes 51 seconds East a distance of 1087.85 feet to a point on

the section line between Section 19 and Section 20; thence along said section line South 04 degrees 33 minutes 54 seconds West 45.00 feet to a concrete monument set; thence South 00 degrees 11 minutes 35 seconds East 601.14 feet to a concrete monument found; thence South 12 degrees 11 minutes 00 seconds West 345.68 feet to a concrete monument set; thence South 04 degrees 33 minutes 54 seconds West 673.69 feet to the place of beginning, containing 120.86 acres, more or less, subject to all legal road right of ways and applicable easements, written or implied.

Appended to the above described parcel is an easement for the purpose of construction and maintenance of a waterline. This easement to be more particularly described after construction of said waterline.

Bearings are based on the centerline of State Route 22 as depicted on sheets 14, 15, and 16 of Musk-22-0.28, Right of Way Plan of State Route 22, and Mus-22-3.27-6.43, sheet 188.

This description is written based on an actual field survey completed on May 5, 1993 by Jack D. Newcome, Reg. No. 7321.

Jack D. Newcome
Reg. No. 7321

05/13/93
Date



PARCEL NO.

Part of: 47-47-66-01-01-000 (74.27 ac.)
Part of: 47-47-70-20-16-000 (0.50 ac.)
All of: 47-47-80-01-01-000 (7.99 ac.)
All of: 47-47-60-08-23-001 (0.11 ac.)
All of: 47-47-82-30-20-000 (37.99 ac.)

Total: 120.86 acres

DESCRIPTION APPROVED
FOR AUDITOR'S TRANSFER

BY

[Signature]
5-24-93

PROPERTY SURVEY FOR MAYSVILLE REGIONAL WATER DISTRICT

LEGEND

- Drill Steel Found
- Iron Pin Found
- Corner Post Found
- Axle Found
- Pipe Found
- ▼ Railroad Iron Found, on End
- Concrete Monument Found
- Concrete Monument Set

SITUATED IN

The Township of Newton, County of Muskingum, State of Ohio, and being part of the South Half of Section 19 Southwest Quarter of Section 20, and a part of the North Half of Section 30, T-15-N, R-14-W.

BASIS OF BEARING

Bearings are based on the centerline of State Route 22 as depicted on sheets 14, 15, and 16 of Mus-22-028, R/W Plan of State Route 22, and Mus-22-3.27-6.43, sheet 188.

PARCEL NO.

Part of: 47-47-66-01-01-000 (± 74.27 Ac.)
Part of: 47-47-70-20-16-000 (± 0.30 Ac.)
All of: 47-47-80-01-01-000 (± 7.99 Ac.)
All of: 47-47-80-08-23-001 (± 0.11 Ac.)
All of: 47-47-82-30-20-000 (± 37.99 Ac.)

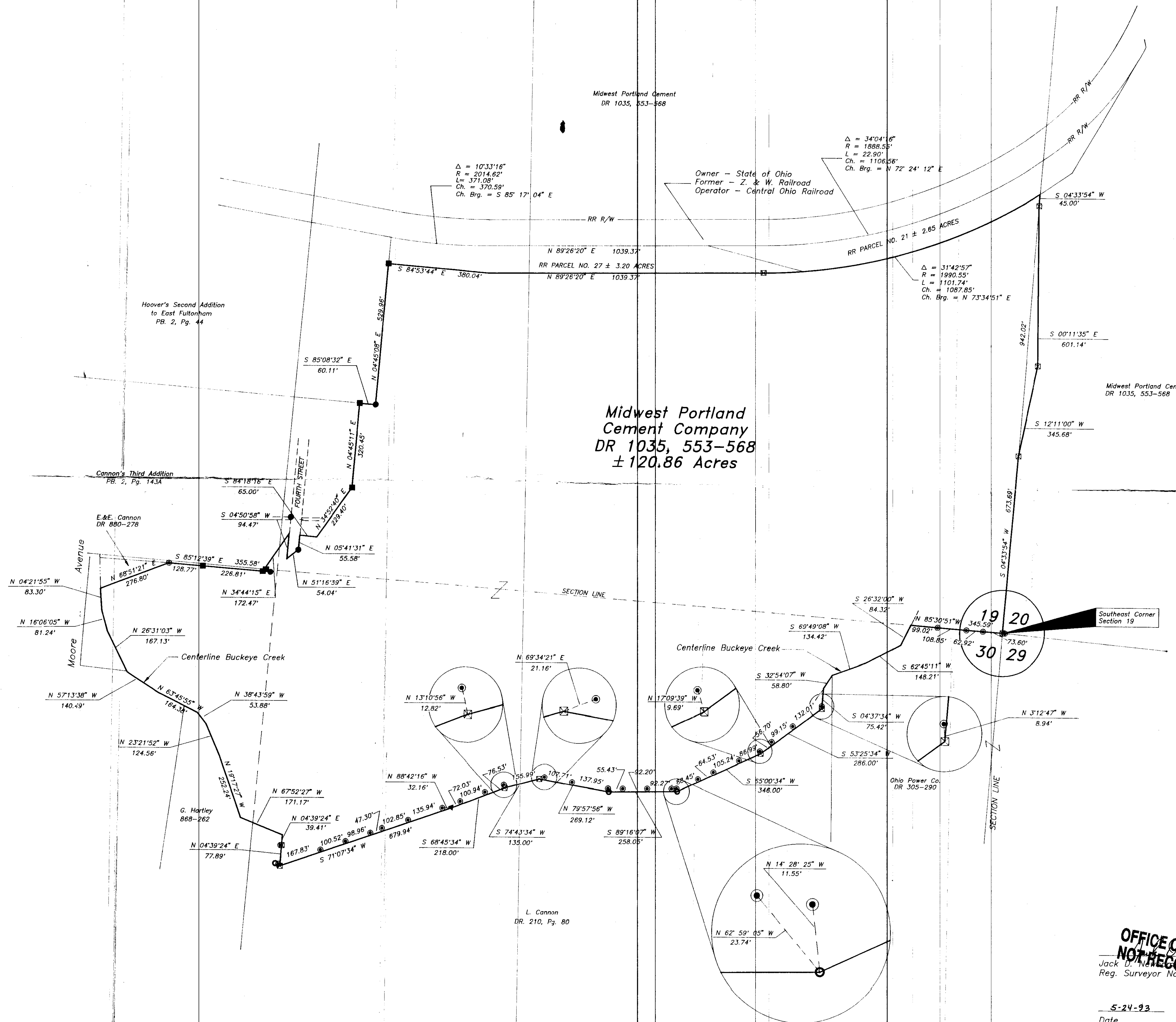
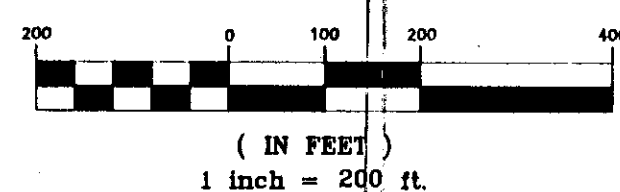
REFERENCES

DR 305, 290
DR 992, 532
DR 204, 335
DR 204, 333
DR 222, 563
DR 211, 64
DR 225, 427
DR 668, 262
PB 2, Pg. 44
PB 2, Pg. 143A
The Z. & W. Railway Map, Sheet No. V-305/15

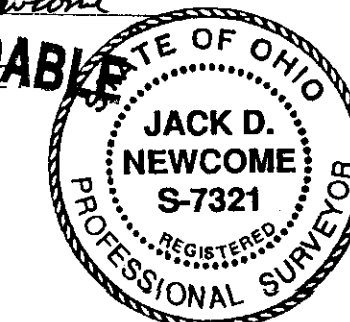
PRIOR DEEDS

DR 204-335
From: W. & C. Hoover
To: Pittsburgh Plate Glass Co.
DR 204-333
From: J. & A. Cannon
To: Pittsburgh Plate Glass Co.
DR 211-64
From: Zanesville & Western
To: Pittsburgh Plate Glass Co.
DR 222-563
From: W. & C.A. Hoover
To: Pittsburgh Plate Glass Co.
DR 225-427
From: F. & W. Rodgers
To: Pittsburgh Plate Glass Co.

GRAPHIC SCALE

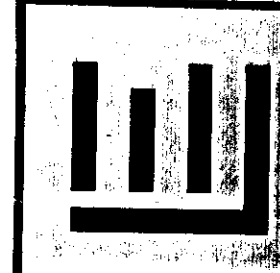


OFFICE COPY
NOT RECORDABLE
Jack D. Newcome
Reg. Surveyor No. 7321



5-24-93
Date

DESCRIPTION APPROVED
FOR AUDITOR'S TRANSFER



Linn Engineering, Inc.
Civil Engineering Consultants
P.O. Box 2671 Zanesville, Ohio 43702-2671
614-452-7434

MIDWEST PORTLAND CEMENT
PROPERTY SURVEY
FOR M.R.W.D.

By	Date	Scale	Revisions	By	Date
JDN	04/21/93	Horizontal = 200'			
SJM	04/21/93	Vertical = N/A			
JDN	05/07/93	Field Book No.			
JDN	05/07/93	Field Book No.			

Project No. MRWD-510
Sheet No. 24