

LEGEND

- IRON PIN SET 5/8" REBAR 30" LONG CAPPED C R HARKNESS PLS6885
- IRON PIN FOUND CAPPED 7113 LINN
- IRON PIN FOUND 5/8" REBAR UNLESS NOTED
- △ CALCULATED POINT UNMARKED
- IRON PIN FOUND CAPPED 6885 HARKNESS
- IRON PIN FOUND CAPPED 5410 DANIELS
- LAND HOOK

Roseville Village Park Divisions

Situated in the State of Ohio, County of Muskingum, Township of Newton:
Being part of Sections 29, 30, 31, and 32, Township 15, Range 14, of the Congress Lands East of the Scioto River, further being part of the Village of Roseville property recorded in Deed Book Volume 746, Page 223 of said county's deed records, further being part of Muskingum County Auditor's Parcel Number 47-82-31-01-000 and all of Parcel Number 47-82-31-01-001.

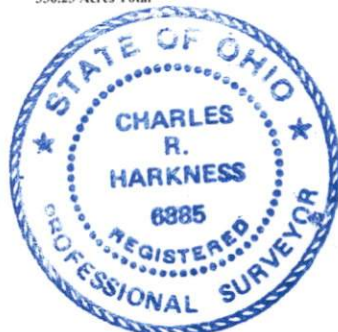
SURVEYOR'S NOTES AND REFERENCES:

Muskingum County Tax Maps and OGRIP Orthophotos of the area. Surveys on file for surrounding properties. Perimeter of the Village of Roseville and common line with Ohio Franklin Realty, LLC were considered calculated/paper surveys.
Note #1: Survey by Tim Linn of Marvin A Miller and Freda Miller property considered an original survey, with pins found held.
Note #2: See prior Village of Roseville Deed Book 746, Page 223 for restrictions applied to now Muskingum County Auditor's Parcels.
Note #3: META Data, State Plane Coordinates Ohio South 1983, 2011 Realization 2010.0 Epoch, GEOID18, GRS1980, Grid to Ground Scale Factor for surveyed portions of Sections 29, 30, 31 and 32 - 1.00007153698975.

ACREAGE BREAKDOWN

Parcel #	47-82-31-01-000	47-82-31-01-001
Section 29	62.70 Acres	0
Section 30	36.98 Acres	0
Section 31	68.26 Acres	1.54 Acres
Section 32	111.78 Acres	48.97 Acres
	279.72 Acres	50.51 Acres

330.23 Acres Total



OFFICE COPY NOT RECORDABLE

This plat was prepared by C.R. Harkness Surveying & Mapping, Inc. in accordance with Chapter 4733-07 of the Administrative Code, and it is hereby certified that the transfer of the parcel surveyed and does not show any apparent easements nor easements of record, unless otherwise indicated.

Charles R. Harkness PLS #6885

Survey For: **Village of Roseville**

Member
HARKNESS SURVEYING & MAPPING, INC.
8205 OLD TOWN ROAD
ROSEVILLE, OHIO 43777
PHONE/FAX (740) 849-0122
Starting 1975

Survey Date: March 28, 2024 Drawn: March 30, 2024

Job# 2862 Sheet # Village Park Sale

PERIMETER CALLS					
CALL	BEARING	CHORD	CHORD	DIST	ARC LEN
1	S 28°12'13" E	111.78	111.78	111.78	111.78
2	S 47°06'37" E	62.70	62.70	62.70	62.70
3	N 03°40'21" E	74.33	74.33	74.33	74.33
4	S 04°10'26" E	41.35	41.35	41.35	41.35
5	S 02°26'35" E	281.07	281.07	3741.00	281.07
6	S 14°17'23" E	208.90	208.90	398.00	208.97
7	S 22°31'36" E	178.67	178.67	178.67	178.67
8	S 19°30'32" E	198.90	198.90	566.00	198.87
9	S 04°19'43" E	25.58	25.58	25.58	25.58
10	S 06°24'25" E	78.43	78.43	78.43	78.43
11	S 46°14'10" E	111.31	111.31	111.31	111.31
12	S 42°28'27" E	62.31	62.31	62.31	62.31
13	S 28°36'41" E	89.23	89.23	89.23	89.23
14	S 37°39'27" E	148.00	148.00	148.00	148.00
15	S 12°58'51" E	111.54	111.54	111.54	111.54
16	S 03°40'21" E	74.33	74.33	74.33	74.33
17	S 02°26'35" E	281.07	281.07	3741.00	281.07
18	S 14°17'23" E	208.90	208.90	398.00	208.97
19	S 22°31'36" E	178.67	178.67	178.67	178.67
20	S 19°30'32" E	198.90	198.90	566.00	198.87
21	S 04°19'43" E	25.58	25.58	25.58	25.58
22	S 06°24'25" E	78.43	78.43	78.43	78.43
23	S 46°14'10" E	111.31	111.31	111.31	111.31
24	S 42°28'27" E	62.31	62.31	62.31	62.31
25	S 28°36'41" E	89.23	89.23	89.23	89.23
26	S 37°39'27" E	148.00	148.00	148.00	148.00
27	S 12°58'51" E	111.54	111.54	111.54	111.54
28	S 03°40'21" E	74.33	74.33	74.33	74.33
29	S 02°26'35" E	281.07	281.07	3741.00	281.07
30	S 14°17'23" E	208.90	208.90	398.00	208.97
31	S 22°31'36" E	178.67	178.67	178.67	178.67
32	S 19°30'32" E	198.90	198.90	566.00	198.87
33	S 04°19'43" E	25.58	25.58	25.58	25.58
34	S 06°24'25" E	78.43	78.43	78.43	78.43
35	S 46°14'10" E	111.31	111.31	111.31	111.31
36	S 42°28'27" E	62.31	62.31	62.31	62.31
37	S 28°36'41" E	89.23	89.23	89.23	89.23
38	S 37°39'27" E	148.00	148.00	148.00	148.00
39	S 12°58'51" E	111.54	111.54	111.54	111.54
40	S 03°40'21" E	74.33	74.33	74.33	74.33
41	S 02°26'35" E	281.07	281.07	3741.00	281.07
42	S 14°17'23" E	208.90	208.90	398.00	208.97
43	S 22°31'36" E	178.67	178.67	178.67	178.67
44	S 19°30'32" E	198.90	198.90	566.00	198.87
45	S 04°19'43" E	25.58	25.58	25.58	25.58
46	S 06°24'25" E	78.43	78.43	78.43	78.43
47	S 46°14'10" E	111.31	111.31	111.31	111.31
48	S 42°28'27" E	62.31	62.31	62.31	62.31
49	S 28°36'41" E	89.23	89.23	89.23	89.23
50	S 37°39'27" E	148.00	148.00	148.00	148.00
51	S 12°58'51" E	111.54	111.54	111.54	111.54
52	S 03°40'21" E	74.33	74.33	74.33	74.33
53	S 02°26'35" E	281.07	281.07	3741.00	281.07
54	S 14°17'23" E	208.90	208.90	398.00	208.97
55	S 22°31'36" E	178.67	178.67	178.67	178.67
56	S 19°30'32" E	198.90	198.90	566.00	198.87
57	S 04°19'43" E	25.58	25.58	25.58	25.58
58	S 06°24'25" E	78.43	78.43	78.43	78.43
59	S 46°14'10" E	111.31	111.31	111.31	111.31
60	S 42°28'27" E	62.31	62.31	62.31	62.31
61	S 28°36'41" E	89.23	89.23	89.23	89.23
62	S 37°39'27" E	148.00	148.00	148.00	148.00
63	S 12°58'51" E	111.54	111.54	111.54	111.54
64	S 03°40'21" E	74.33	74.33	74.33	74.33
65	S 02°26'35" E	281.07	281.07	3741.00	281.07
66	S 14°17'23" E	208.90	208.90	398.00	208.97
67	S 22°31'36" E	178.67	178.67	178.67	178.67
68	S 19°30'32" E	198.90	198.90	566.00	198.87
69	S 04°19'43" E	25.58	25.58	25.58	25.58
70	S 06°24'25" E	78.43	78.43	78.43	78.43
71	S 46°14'10" E	111.31	111.31	111.31	111.31
72	S 42°28'27" E	62.31	62.31	62.31	62.31
73	S 28°36'41" E	89.23	89.23	89.23	89.23
74	S 37°39'27" E	148.00	148.00	148.00	148.00
75	S 12°58'51" E	111.54	111.54	111.54	111.54
76	S 03°40'21" E	74.33	74.33	74.33	74.33
77	S 02°26'35" E	281.07	281.07	3741.00	281.07
78	S 14°17'23" E	208.90	208.90	398.00	208.97
79	S 22°31'36" E	178.67	178.67	178.67	178.67
80	S 19°30'32" E	198.90	198.90	566.00	198.87
81	S 04°19'43" E	25.58	25.58	25.58	25.58
82	S 06°24'25" E	78.43	78.43	78.43	78.43
83	S 46°14'10" E	111.31	111.31	111.31	111.31
84	S 42°28'27" E	62.31	62.31	62.31	62.31
85	S 28°36'41" E	89.23	89.23	89.23	89.23
86	S 37°39'27" E	148.00	148.00	148.00	148.00
87	S 12°58'51" E	111.54	111.54	111.54	111.54
88	S 03°40'21" E	74.33	74.33	74.33	74.33
89	S 02°26'35" E	281.07	281.07	3741.00	281.07
90	S 14°17'23" E	208.90	208.90	398.00	208.97
91	S 22°31'36" E	178.67	178.67	178.67	178.67
92	S 19°30'32" E	198.90	198.90	566.00	198.87
93	S 04°19'43" E	25.58	25.58	25.58	25.58
94	S 06°24'25" E	78.43	78.4	78.43	78.43
95	S 46°14'10" E	111.31	111.31	111.31	111.31
96	S 42°28'27" E	62.31	62.31	62.31	62.31
97	S 28°36'41" E	89.23	89.23	89.23	89.23
98	S 37°39'27" E	148.00	148.00	148.00	148.00
99	S 12°58'51" E	111.54	111.54	111.54	111.54
100	S 03°40'21" E	74.33	74.33	74.33	74.33
101	S 02°26'35" E	281.07	281.07	3741.00	281.07
102	S 14°17'23" E	208.90	208.90	398.00	208.97
103	S 22°31'36" E	178.67	178.67	178.67	178.67
104	S 19°30'32" E	198.90	198.90	566.00	198.87
105	S 04°19'43" E	25.58	25.58	25.58	25.58
106	S 06°24'25" E	78.43	78.43	78.43	78.43
107	S 46°14'10" E	111.31	111.31	111.31	111.31
108	S 42°28'27" E	62.31	62.31	62.31	62.31
109	S 28°36'41" E	89.23	89.23	89.23	89.23
110	S 37°39'27" E	148.00	148.00	148.00	148.00
111	S 12°58'51" E	111.54	111.54	111.54	111.54
112	S 03°40'21" E	74.33	74.33	74.33	74.33
113	S 02°26'35" E	281.07	281.07	3741.00	281.07
114	S 14°17'23" E	208.90	208.90	398.00	208.97
115	S 22°31'36" E	178.67	178.67	178.67	178.67
116	S 19°30'32" E	198.90	198.90	566.00	198.87
117	S 04°19'43" E	25.58	25.58	25.58	25.58
118	S 06°24'25" E	78.43	78.43	78.43	78.43
119	S 46°14'10" E	111.31	111.31	111.31	111.31
120	S 42°28'27" E	62.31	62.31	62.31	62.31
121	S 28°36'41" E	89.23	89.23	89.23	89.23
122	S 37°39'27" E	148.00	148.00	148.00	148.00
123	S 12°58'51" E	111.54	111.54	111.54	111.54
124	S 03°40'21" E	74.33	74.33	74.33	74.33
125	S 02°26'35" E	281.07	281.07	3741.00	281.07
126	S 14°17'23" E	208.90	208.90	398.00	208.97
127	S 22°31'36" E	178.67	178.67	178.67	178.67
128	S 19°30'32" E	198.90	198.90	566.00	198.87
129	S 04°19'43" E	25.58	25.58	25.58	25.58
130	S 06°24'25" E	78.43	78.43	78.43	78.43
131	S 46°14'10" E	111.31	111.31	111.31	111.31
132	S 42°28'27" E	62.31	62.31	62.31	62.31
133	S 28°36'41" E	89.23	89.23	89.23	89.23
134	S 37°39'27" E	148.00	148.00	148.00	148.00
135	S 12°58'51" E	111.54	111.54	111.54	111.54
136	S 03°40'21" E	74.33	74.33	74.33	74.33
137	S 02°26'35" E	281.07	281.07	3741.00	281.07
138	S 14°17'23" E	208.90	208.90	398.00	208.97
139	S 22°31'36" E	178.67	178.67	178.67	178.67
140	S 19°30'32" E	198.90	198.90	566.00	198.87
141	S 04°19'43" E	25.58	25.58	25.58	25.58
142	S 06°24'25" E	78.43	78.43	78.43	78.43
143	S 46°14'10" E	111.31	111.31	111.31	111.31
144	S 42°28'27" E	62.31	62.31	62.31	62.31
145	S 28°36'41" E	89.23	89.23	89.23	89.23
146	S 37°39'27" E	148.00	148.00	148.00	148.00
147	S 12°58'51" E	111.54	111.54	111.54	111.54
148	S 03°40'21" E	74.33	74.33	74.33	74.33
149	S 02°26'35" E	281.07	281.07	3741.00	281.07
150	S 14°17'23" E	208.90	208.90	398.00	208.97
151	S 22°31'36" E	178.67	178.67	178.67	178.67
152	S 19°30'32" E	198.90	198.90	566.00	198.87
153	S 04°19'43" E	25.58	25.58	25.58	25.58
154	S 06°24'25" E	78.43	78.43	78.43	78.43
155	S 46°14'10" E	111.31	111.31	111.31	111.31
156	S 42°28'27" E	62.31	62.31	62.31	62.31
157	S 28°36'41" E	89.23	89.23	89.23	89.23
158	S 37°39'27" E	148.00	148.00	148.00	148.00
159	S 12°58'51" E	111.54	111.54	111.54	111.54
160	S 03°40'21" E	74.33	74.33	74.33	74.33
161	S 02°26'35" E	281.07	281.07	3741.00	281.07
162	S 14°17'23" E	208.90	208.90	398.00	208.97
163	S 22°31'36" E	178.67	178.67	178.67	178.67
164	S 19°30'32" E	198.90	198.90	566.00	198.87
165	S 04°19'43" E	25.58	25.58	25.58	25.58
166	S 06°24'25" E	78.43	78.43	78.43	78.43
167	S 46°14'10" E	111.31	111.31	111.31	111.31
168	S 42°28'27" E	62.31	62.31	62.31	62.31
169	S 28°36'41" E	89.23	89.23	89.23	89.23
170	S 37°39'27" E	148.00	148.00	148.00	148.00
171	S 12°58'51" E	111.54	111.54	111.54	111.54
172	S 03°40'21" E	74.33	74.33	74.33	74.33
173	S 02°26'35" E	281.07	281.07	3741.00	281.07
174	S 14°17'23" E	208.90	208.90	398.00	208.97
175	S 22°31'36" E	178.67	178.67	178.67	178.67
176	S 19°30'32" E	198.90	198.90	566.00	198.87
177	S 04°19'43" E	25.58			