

BOWMAN SURVEYING
38 N. 4th Street, Rm. 103
Zanesville, Ohio 43701
PH. (740) 454-0496

SNR

**SURVEY DESCRIPTION
FOR
Robinson Ransbottom Pottery Co.**

ALL OF AUDITORS PARCELS

47-94-34-32-000, 47-94-34-33-000, 47-94-34-34-000

Situated in Section 34, T-15, R-14, Newton Township, Muskingum County, Ohio.

Commencing at a found iron pin marking the Southwest corner of the Southeast quarter of section 34; Thence, N.00°40'33"E. a distance of 391.94 feet along the west line of said Southeast quarter to a point in the center of Ransbottom Road, BEING THE POINT OF BEGINNING;

Thence, S.66°06'08"W. a distance of 51.56 feet along center of said road to a point;

Thence, S.75°40'17"W. a distance of 51.10 feet along center of said road to a point;

Thence, S.81°13'35"W. a distance of 71.82 feet along center of said road to a point;

Thence, S.84°17'07"W. a distance of 143.51 feet along center of said road to a point;

Thence, S.84°07'03"W. a distance of 53.04 feet along center of said road to a point;

Thence, S.82°16'50"W. a distance of 51.04 feet along center of said road to a point;

Thence, S.79°27'36"W. a distance of 54.08 feet along center of said road to a point;

Thence, S.74°30'05"W. a distance of 57.90 feet along center of said road to a point;

Thence, S.68°18'56"W. a distance of 50.06 feet along center of said road to a point;

Thence, S.56°13'36"W. a distance of 212.77 feet along center of said road to a point;

Thence, S.51°31'06"W. a distance of 67.91 feet along center of said road to a point;

Thence, S.34°00'17"W. a distance of 124.54 feet along center of said road to a point on the South line of Section 34;

Thence, N.59°07'22"W. a distance of 301.52 feet along said section line to a point on the East line of rail road lands, now or formerly, owned by Conrail, passing found iron pins at 21.42 and 91.21 feet;

Thence, N.19°43'34"E. a distance of 572.22 feet along said rail road lands to a point;

Thence, on a curve to the right an arc distance of 1,650.88', on a radius of 5,585.91', whose chord bears N.28°11'34"E. a distance of 1,644.88 feet along said rail road lands to a point;

- Thence, **N.36°39'34"E.** a distance of **431.28** feet along said rail road lands to a point on the southerly line of a side track of Conrail (formerly the C. & M.V. R.R.);
- Thence, on a curve to the left an arc distance of 311.27', on a radius of 365.95', whose chord bears **S.22°23'14"E.** a distance of **301.97** feet along said side track to a point;
- Thence, **S.46°45'01"E.** a distance of **98.73** feet along said side track to a point;
- Thence, **N.70°11'57"W.** a distance of **180.00** feet along said side track to a point;
- Thence, **S.19°48'03"W.** a distance of **13.00** feet along said side track to a point;
- Thence, **S.70°11'57"E.** a distance of **186.64** feet along said side track to a point;
- Thence, on a curve to the right an arc distance of 27.62', on a radius of 209.71', whose chord bears **S.66°24'49"E.** a distance of **27.60** feet along said side track to a point;
- Thence, **S.46°45'01"E.** a distance of **73.40** feet along said side track to a point;
- Thence, **S.25°13'47"W.** a distance of **2.48** feet along said side track to a point;
- Thence, **N.70°11'57"W.** a distance of **170.30** feet along said side track to a point;
- Thence, **S.19°48'03"W.** a distance of **13.00** feet along said side track to a point;
- Thence, **S.70°11'57"E.** a distance of **156.82** feet along said side track to a point;
- Thence, **S.69°08'04"E.** a distance of **12.19** feet along said side track to a point;
- Thence, **S.46°45'01"E.** a distance of **104.70** feet along said side track to a point on the west line of a 6.00' reserve of Beem City First Addition (P.B. 4, Pg. 35);
- Thence, on a curve to the right an arc distance of 300.78', on a radius of 1,860.98', whose chord bears **S.30°33'08"W.** a distance of **300.45** feet along said addition to found iron pin;
- Thence, **S.35°16'54"W.** a distance of **387.88** feet along said Addition to found iron pin on the West line of the Southeast quarter of section 34;
- Thence, **S.00°40'33"W.** a distance of **883.16** feet along said quarter section line to the point of beginning, passing a found iron pin at 858.16'.

The above described parcel contains 34.60 acres, more or less and is subject to all legal easements and right of ways. All set rebars are 5/8" x 30" rebars with plastic I.D. caps. North is based upon an assumed meridian.

Description was prepared from an actual field survey by Bowman Surveying, Stephen M. Bowman, P.E. #7135, May 14, 2007.

APPROVED FOR CLOSURE

[Signature] 5/18/2007

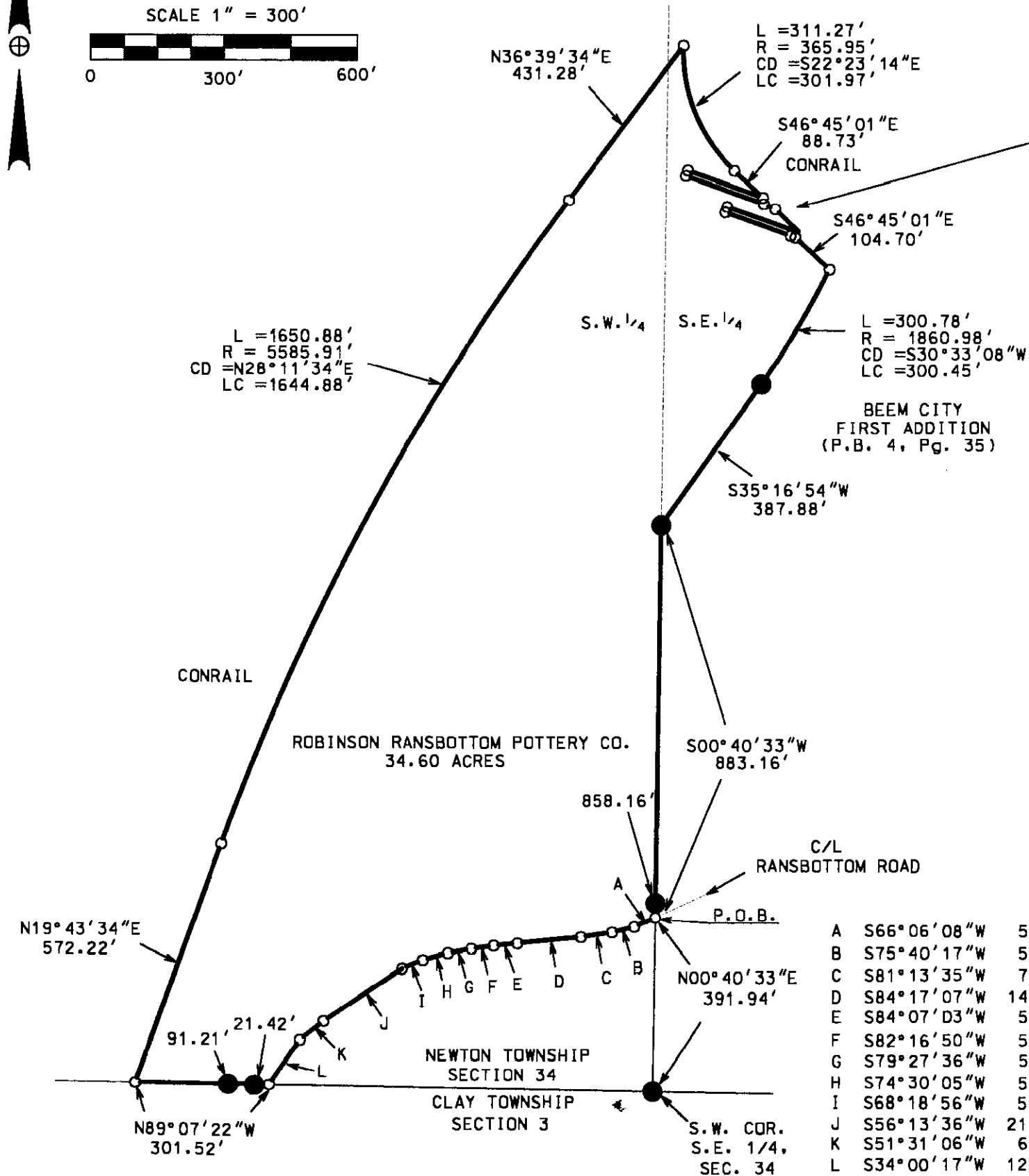
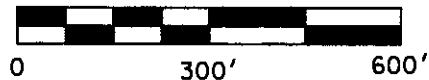
OFFICE COPY
NOT RECORDABLE

EXEMPT FROM
PLANNING COMMISSION

[Signature] 5/18/2007

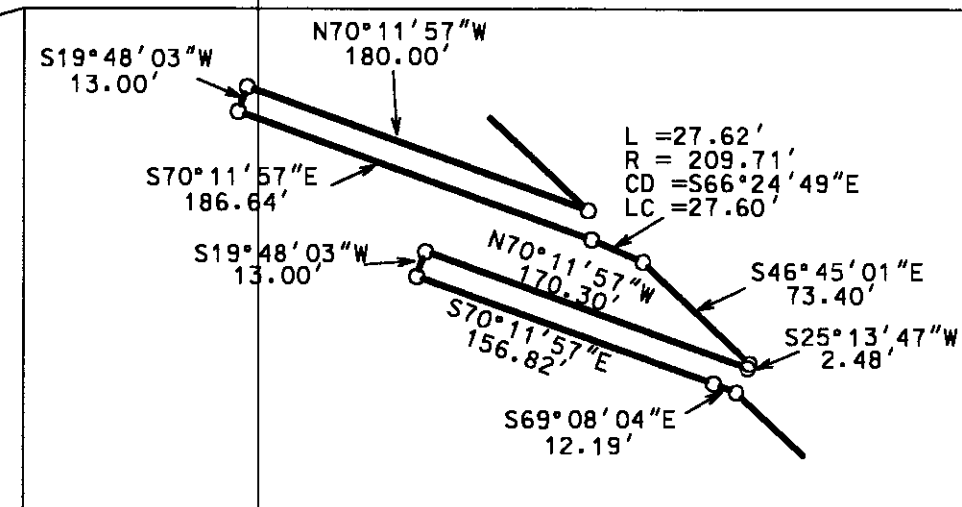
NORTH IS BASED UPON
AN ASSUMED MERIDIAN

SCALE 1" = 300'



SURVEY PLAT FOR ROBINSON RANSBOTTOM POTTERY
SITUATED IN SECTION 34, T-15, R-14, NEWTON TOWNSHIP, MUSKINGUM COUNTY, OHIO.

AUDITORS PARCEL
47-94-34-32-000
47-94-34-33-000
47-94-34-34-000



APPROVED FOR CLOSURE

[Signature] 5/18/2007

EXEMPT FROM
PLANNING COMMISSION

[Signature] 5/18/2007

LEGEND

- STONE FOUND
- IRON PIN FOUND
- ⊕ 5/8" X 30" REBAR SET
W/ I.D. CAP
- POINT
- CENTERLINE

I CERTIFY THIS DRAWING WAS PREPARED
FROM AN ACTUAL FIELD SURVEY I CONDUCTED

OFFICE COPY
NOT RECORDABLE



BOWMAN SURVEYING
38 N. 4TH STREET
ZANESVILLE, OHIO 43701
PHONE/FAX 740-454-0496
JOB: M-07093 DATE: 05/14/07