

**SURVEY DESCRIPTION
FOR
Carol Goff**

ALL OF AUDITORS PARCELS
51-40-12-42-000
51-40-12-43-000

Situated in Section 12, T-1-N, R-6-W, U.S.M.L., Perry Township,
Muskingum County, Ohio.

Commencing at the Southeast corner of the Southeast Quarter of Section 12;
Thence, **N.00°48'37"E.** a distance of **1,423.48** feet along the East line of
said section to a found iron pin, BEING THE POINT OF BEGINNING;

Thence, **N.89°28'52"W.** a distance of **2,626.63** feet along the North line of
The lands, now or formerly, owned by C. Goff (1140/925) and J. &
C. Hesson (1949/754) to a found iron pin on the West line of said
quarter section;

Thence, **N.00°26'39"W.** a distance of **677.03** feet along said quarter section
to a found iron pin on the South side of the lands, now or formerly,
owned by J. Ross (1113/545), also located on the South side of Salt
Creek;

Thence, **N.48°02'23"E.** a distance of **505.66** feet along said Ross lands and
said creek to a point;

Thence, **N.70°02'26"E.** a distance of **147.29** feet along said Ross lands and
said creek to a found iron pin;

Thence, **N.33°52'06"E.** a distance of **77.64** feet along said Ross lands and
said creek to a found iron pin;

Thence, **N.08°01'43"W.** a distance of **116.54** feet along said Ross lands and
said creek to a found iron pin;

Thence, **S.88°36'39"E.** a distance of **92.00** feet along the South line of the
lands, now or formerly, owned by C. Matesich (1893/44) to a found
iron pin;

Thence, **S.33°13'06"W.** a distance of **107.78** feet along said Matesich lands
to a found iron pin;

Thence, **N.70°14'19"E.** a distance of **282.78** feet along said Matesich lands
to a found wood post;

- Thence, **S.88°15'31"E.** a distance of **256.28** feet along said Matesich lands to a found iron pin;
- Thence, **N.34°19'42"W.** a distance of **458.56** feet along said Matesich lands to a point in the center of U.S. Route 40, passing a found iron pin at 362.58 feet;
- Thence, on a curve to the right an arc distance of 1,253.72 feet, on a radius of 2,291.83' whose chord bears **N.86°15'17"E.** a distance of **1,238.14** feet along the center of said route to a point;
- Thence, **S.78°04'25"E.** a distance of **395.07** feet along the center of said route to a point;
- Thence, on a curve to the left an arc distance of 191.57 feet, on a radius of 2,281.85' whose chord bears **S.80°28'44"E.** a distance of **191.52** feet along the center of said route to a point on the East line of section 12;
- Thence, **S.01°35'55"W.** a distance of **328.38** feet along the East line of Section to a found iron pin on the North line of the lands, now or formerly, owned by H. Kidd (1080/531), passing a found iron pin at 90.26 feet;
- Thence, **S.81°59'34"W.** a distance of **529.17** feet along said Kidd lands to a found iron pin;
- Thence, **S.13°21'35"E.** a distance of **258.29** feet along said Kidd lands to a found iron pin;
- Thence, **N.79°51'41"E.** a distance of **473.64** feet along said Kidd lands to a found iron pin on the east line of section 12;
- Thence, **S.00°32'51"W.** a distance of **1,040.86** feet along said section line to the point of beginning.

The above described parcel contains 86.25 acres, more or less, (18.62 acres in the N.E. $\frac{1}{4}$ and 67.63 acres in the S.E. $\frac{1}{4}$) subject to all legal easements and right of ways. All set rebars are 5/8" x 30" rebars with plastic I.D. caps. North is based upon an assumed meridian.

Description was prepared from an actual field survey by Bowman Surveying, Stephen M. Bowman, P.S.#7135. June 30, 2006

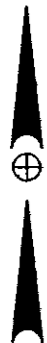
APPROVED FOR CLOSURE

ASB 7/5/2006

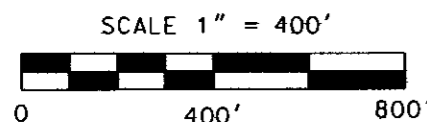
EXEMPT FROM
PLANNING COMMISSION

ASB 7/5/2006

OFFICE COPY
NOT RECORDABLE



NORTH IS BASED UPON
AN ASSUMED MERIDIAN



SURVEY PLAT FOR CAROL GOFF

SITUATED SECTION 12, T-1-N, R-6-W, U.S.M.L., PERRY TOWNSHIP, MUSKINGUM COUNTY, OHIO.

ALL OF AUDITORS PARCELS

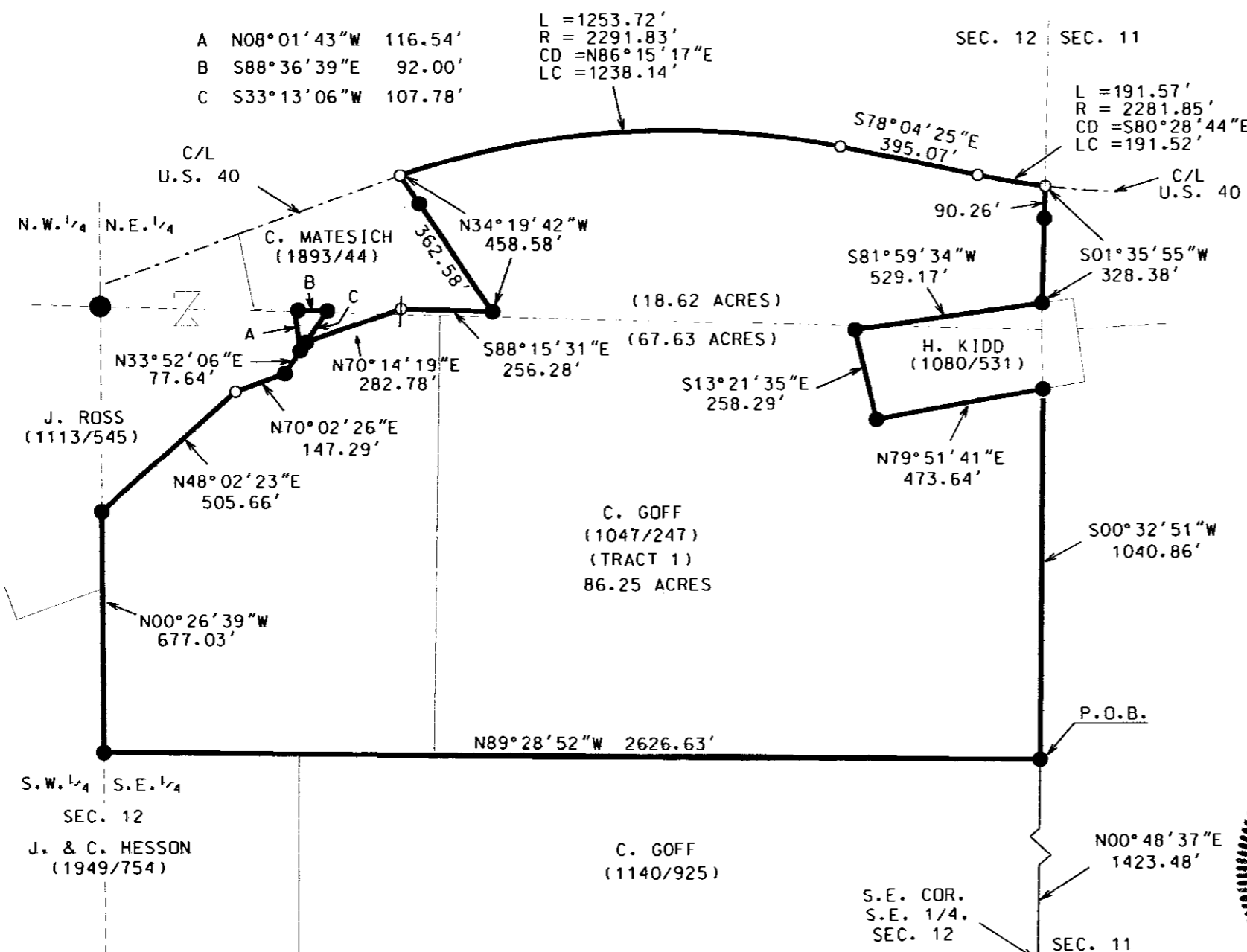
51-40-12-42-000
51-40-12-43-000

APPROVED FOR CLOSURE

[Signature] 7/5/2006

EXEMPT FROM
PLANNING COMMISSION

[Signature] 7/5/2006



LEGEND

- IRON PIN FOUND
- ⊕ 5/8" X 30" REBAR SET W/ I.D. CAP
- POINT
- CENTERLINE
- ⊕ WOOD POST FOUND

I CERTIFY THIS DRAWING WAS PREPARED
FROM AN ACTUAL FIELD SURVEY I CONDUCTED

**OFFICE COPY
NOT RECORDABLE**

STEPHEN M. BOWMAN, P.S. #7135



BOWMAN SURVEYING

38 N. 4TH STREET
ZANESVILLE, OHIO 43701
PHONE/FAX 740-454-0496