

Biedenbach Engineering, Inc.

Civil Engineering and Land Surveying

51-40-12-54

51-40-12-53

370 URBAN HILL RD

51-80-19-04-001

350 URBAN HILL RD

Telephone (740) 453-4850
Fax (740) 450-1000
E-mail biedenbach@ee.net

S. AND C. STONEBURNER

AUDITORS PARCEL NUMBERS

51-51-40-12-54-000 (ALL) – 39.021 MORE OR LESS ACRES

51-51-40-12-53-000 (ALL) – 18.736 MORE OR LESS ACRES

51-51-80-19-04-000 (ALL) – 3.738 MORE OR LESS ACRES

BEING A PART OF THE NORTHWEST QUARTER OF SECTION 19 AND THE SOUTHWEST AND THE SOUTHEAST QUARTER OF SECTION 12, TOWNSHIP 1, RANGE 6, OF THE UNITED STATES MILITARY LANDS, PERRY TOWNSHIP, MUSKINGUM COUNTY, OHIO AND BEING FURTHER DESCRIBED AS FOLLOWS:

COMMENCING AT AN EXISTING STONE AT THE NORTHEAST CORNER OF THE NORTHWEST QUARTER OF SECTION 19;

THENCE WITH THE WEST LINE OF A TRACT CONVEYED TO W. FORAKER (DEED BOOK VOLUME 1133, PAGE 192), SOUTH 00 DEGREES 44 MINUTES 37 SECONDS WEST 145.00 FEET TO A POINT IN THE CENTER OF TOWNSHIP ROAD 465 (URBAN HILL ROAD), PASSING AN IRON PIN SET AT 120.00 FEET;

THENCE WITH THE CENTER OF TOWNSHIP ROAD 465 (URBAN HILL ROAD) THE FOLLOWING 23 COURSES AND DISTANCES:

- 1) SOUTH 86 DEGREES 26 MINUTES 17 SECONDS WEST 30.00 FEET TO A POINT, SAID POINT BEING NORTH 14 DEGREES 13 MINUTES 38 SECONDS EAST 22.42 FEET FROM AN EXISTING IRON PIN (5/8 INCH REBAR);
- 2) SOUTH 86 DEGREES 26 MINUTES 17 SECONDS WEST 50.38 FEET TO A POINT;
- 3) SOUTH 80 DEGREES 41 MINUTES 27 SECONDS WEST 65.18 FEET TO A POINT;
- 4) SOUTH 78 DEGREES 13 MINUTES 37 SECONDS WEST 155.47 FEET TO A POINT;
- 5) SOUTH 75 DEGREES 05 MINUTES 17 SECONDS WEST 83.71 FEET TO A POINT;
- 6) SOUTH 79 DEGREES 40 MINUTES 47 SECONDS WEST 48.34 FEET TO A POINT;
- 7) SOUTH 83 DEGREES 06 MINUTES 37 SECONDS WEST 89.76 FEET TO A POINT;
- 8) SOUTH 85 DEGREES 19 MINUTES 37 SECONDS WEST 140.30 FEET TO A POINT, SAID POINT BEING NORTH 85 DEGREES 19 MINUTES 37 SECONDS EAST 120.00 FEET FROM AN EXISTING IRON PIN;
- 9) WITH A CURVE TO THE RIGHT HAVING A RADIUS OF 138.08 FEET (CHORD BEARING NORTH 53 DEGREES 40 MINUTES 49 SECONDS WEST 181.15 FEET) AN ARC LENGTH OF 197.58 FEET TO A POINT, SAID POINT BEING NORTH 12 DEGREES 41 MINUTES 16 SECONDS WEST 120.00 FEET FROM AN EXISTING IRON PIN;
- 10) NORTH 12 DEGREES 41 MINUTES 16 SECONDS WEST 142.99 FEET TO A POINT;
- 11) NORTH 18 DEGREES 30 MINUTES 03 SECONDS WEST 105.65 FEET TO A POINT;
- 12) NORTH 08 DEGREES 48 MINUTES 03 SECONDS WEST 177.12 FEET TO A POINT;
- 13) NORTH 17 DEGREES 22 MINUTES 03 SECONDS WEST 67.44 FEET TO A POINT;
- 14) NORTH 34 DEGREES 28 MINUTES 03 SECONDS WEST 18.39 FEET TO A POINT;
- 15) NORTH 39 DEGREES 14 MINUTES 23 SECONDS WEST 47.11 FEET TO A POINT, SAID POINT BEING NORTH 85 DEGREES 55 MINUTES 35 SECONDS WEST 61.87 FEET FROM AN IRON PIN SET;
- 16) NORTH 49 DEGREES 50 MINUTES 23 SECONDS WEST 54.54 FEET TO A POINT;
- 17) NORTH 57 DEGREES 34 MINUTES 02 SECONDS WEST 139.52 FEET TO A POINT;
- 18) NORTH 51 DEGREES 36 MINUTES 05 SECONDS WEST 48.77 FEET TO A POINT;
- 19) NORTH 40 DEGREES 59 MINUTES 04 SECONDS WEST 43.87 FEET TO A POINT;
- 20) NORTH 28 DEGREES 21 MINUTES 04 SECONDS WEST 52.55 FEET TO A POINT;
- 21) NORTH 14 DEGREES 48 MINUTES 22 SECONDS WEST 54.22 FEET TO A POINT;
- 22) NORTH 08 DEGREES 17 MINUTES 13 SECONDS WEST 297.68 FEET TO A POINT, SAID POINT BEING NORTH 87 DEGREES 50 MINUTES 17 SECONDS EAST 20.00 FEET FROM AN EXISTING CONCRETE MONUMENT;
- 23) NORTH 01 DEGREES 47 MINUTES 24 SECONDS WEST 349.55 FEET TO A POINT ON THE SOUTH LINE OF A TRACT CONVEYED TO C. O. LIGHTHIZER (DEED BOOK VOLUME 767, PAGE 134), PASSING AN EXISTING CONCRETE MONUMENT AT 299.55 FEET;

THENCE WITH THE SOUTH LINE OF SAID LIGHTHIZER TRACT, SOUTH 79 DEGREES 40 MINUTES 25 SECONDS EAST 417.12 FEET TO AN IRON PIN SET;

THENCE CONTINUING WITH THE SAID SOUTH LINE, SOUTH 87 DEGREES 40 MINUTES 24 SECONDS EAST 71.94 FEET TO AN IRON PIN SET;

Biedenbach Engineering, Inc.

3010 East Pike
Zanesville, OH 43701

Civil Engineering and Land Surveying

Telephone (740) 453-4850
Fax (740) 450-1000
E-mail biedenbach@ee.net

THENCE CONTINUING WITH THE SAID SOUTH LINE, NORTH 63 DEGREES 31 MINUTES 48 SECONDS EAST 251.69 FEET TO A POINT AT THE SOUTHWEST CORNER OF A TRACT CONVEYED TO THE EAST 40 CHURCH OF CHRIST (DEED BOOK VOLUME 1105, PAGE 254), PASSING AN IRON PIN SET AT 176.85 FEET;

THENCE WITH THE SOUTH LINE OF SAID TRACT, NORTH 64 DEGREES 19 MINUTES 13 SECONDS EAST 178.78 FEET TO AN EXISTING IRON PIN (1/2 INCH PIPE);

THENCE CONTINUING WITH THE SAID SOUTH LINE, NORTH 11 DEGREES 46 MINUTES 42 SECONDS EAST 403.93 FEET TO A POINT, PASSING AN IRON PIN SET AT 353.93 FEET;

THENCE CONTINUING WITH THE SAID SOUTH LINE, NORTH 52 DEGREES 39 MINUTES 11 SECONDS EAST 118.59 FEET TO AN EXISTING IRON PIN (1/2 INCH PIPE) ON THE WEST LINE OF A TRACT CONVEYED TO J. ROSS (DEED BOOK VOLUME 1113, PAGE 545);

THENCE WITH THE WEST LINE OF SAID ROSS TRACT, SOUTH 19 DEGREES 54 MINUTES 25 SECONDS EAST 96.75 FEET TO AN EXISTING IRON PIN (5/8 INCH REBAR) AT THE SOUTHWEST CORNER OF SAID ROSS TRACT;

THENCE WITH THE SOUTH LINE OF SAID ROSS TRACT, NORTH 70 DEGREES 02 MINUTES 23 SECONDS EAST 255.13 FEET TO AN EXISTING IRON PIN (5/8 INCH REBAR) ON THE WEST LINE OF A TRACT CONVEYED TO CAROL GOFF (DEED BOOK VOLUME 789, PAGE 24);

THENCE WITH THE WEST LINE OF SAID GOFF TRACT, SOUTH 00 DEGREES 26 MINUTES 39 SECONDS EAST 460.55 FEET TO AN IRON PIN SET AT THE SOUTHWEST CORNER OF SAID GOFF TRACT;

THENCE WITH THE SOUTH LINE OF SAID GOFF TRACT, SOUTH 89 DEGREES 28 MINUTES 58 SECONDS EAST 547.25 FEET TO AN EXISTING IRON PIN (5/8 INCH REBAR) AT THE NORTHWEST CORNER OF A TRACT CONVEYED TO CAROL GOFF (DEED BOOK VOLUME 1140, PAGE 925);

THENCE WITH THE WEST LINE OF SAID GOFF TRACT (VOLUME 1140, PAGE 925) AND A TRACT CONVEYED TO J. CARPENTER (DEED BOOK VOLUME 1053, PAGE 264), SOUTH 00 DEGREES 07 MINUTES 11 SECONDS EAST 1424.53 FEET TO AN IRON PIN SET, PASSING AN EXISTING IRON PIN (5/8 INCH REBAR) AT 831.14 FEET;

THENCE WITH THE SOUTH LINE OF SECTION 12, NORTH 89 DEGREES 30 MINUTES 36 SECONDS WEST 598.53 FEET TO THE **PLACE OF BEGINNING**.

CONTAINING 61.495 MORE OR LESS ACRES (TOTAL), OF WHICH 39.021 MORE OR LESS ACRES ARE IN THE SOUTHWEST QUARTER OF SECTION 12, AND 18.736 MORE OR LESS ACRES ARE IN THE SOUTHEAST QUARTER OF SECTION 12, AND 3.738 MORE OR LESS ACRES ARE IN THE NORTHWEST QUARTER OF SECTION 19, SUBJECT TO ALL LEGAL ROAD RIGHT OF WAYS OF TOWNSHIP ROAD 465 (URBAN HILL ROAD) AND ALL OTHER APPLICABLE EASEMENTS.

ALL IRON PINS SET ARE 5/8 INCH X 30 INCH REBAR WITH PLASTIC IDENTIFICATION CAPS (BIEDENBACH PS7923-PS6923).

BEARINGS ARE BASED ON THE NORTH LINE OF THE 29.15 ACRE TRACT CONVEYED TO GEORGE A. KERR, JR. BY DEED RECORDED IN VOLUME 559, PAGE 524 OF THE MUSKINGUM COUNTY DEED RECORDS.

I HEREBY CERTIFY TO THE BEST OF MY KNOWLEDGE AND BELIEF THE SURVEY AND DESCRIPTION TO BE CORRECT AS PREPARED BY ME, THIS 9TH DAY OF JANUARY 2003.

**OFFICE COPY
NOT RECORDABLE**
MICHAEL D. WIGMORES
REGISTERED SURVEYOR 6923

DESCRIPTION APPROVED
FOR AUDITOR'S TRANSFER
BY *[Signature]*
1-13-2003

Biedenbach Surveying, Inc.

3010 East Pike
Zanesville, OH 43701

Land Surveying and Mapping

Telephone (740) 453-4850

Fax (740) 450-1000

E-mail biedenbach@ee.net

- 2) SOUTH 86 DEGREES 26 MINUTES 17 SECONDS WEST 50.38 FEET TO A POINT;
- 3) SOUTH 80 DEGREES 41 MINUTES 27 SECONDS WEST 34.74 FEET TO A POINT, SAID POINT BEING THE TRUE PLACE OF BEGINNING;

THENCE LEAVING THE SAID ROAD AND FOLLOWING 7 COURSES AND DISTANCES:

- 1) NORTH 44 DEGREES 05 MINUTES 50 SECONDS EAST 115.06 FEET TO A POINT;
- 2) NORTH 31 DEGREES 47 MINUTES 25 SECONDS EAST 28.93 FEET TO A POINT;
- 3) NORTH 02 DEGREES 25 MINUTES 10 SECONDS EAST 46.30 FEET TO A POINT;
- 4) NORTH 26 DEGREES 53 MINUTES 35 SECONDS WEST 38.34 FEET TO A POINT;
- 5) NORTH 75 DEGREES 07 MINUTES 35 SECONDS WEST 51.49 FEET TO A POINT;
- 6) SOUTH 80 DEGREES 51 MINUTES 30 SECONDS WEST 164.21 FEET TO A POINT;
- 7) SOUTH 68 DEGREES 13 MINUTES 25 SECONDS WEST 47.13 FEET TO THE TERMINUS OF THIS EASEMENT.

ALL IRON PINS SET ARE 5/8 INCH X 30 INCH REBAR WITH PLASTIC IDENTIFICATION CAPS (BIEDENBACH PS7923-PS6923).

BEARINGS ARE BASED ON THE NORTH LINE OF THE 29.15 ACRE TRACT CONVEYED TO GEORGE A. KERR, JR. BY DEED RECORDED IN VOLUME 559, PAGE 524 OF THE MUSKINGUM COUNTY DEED RECORDS.

I HEREBY CERTIFY TO THE BEST OF MY KNOWLEDGE AND BELIEF THE SURVEY AND
NOTICE TO BE CORRECT AS PREPARED BY ME, THIS 17TH DAY OF MAY 2006.

**OFFICE COPY
NOT RECORDABLE**

MICHAEL D. NICHOLS
REGISTERED SURVEYOR 6923

APPROVED FOR CLOSURE

[Signature] 5/22/2006

EXEMPT FROM
PLANNING COMMISSION

[Signature] 5/22/2006

SURVEY FOR CENTURY 21

AUDITORS PARCEL NUMBER

51-51-40-12-54-000 (ALL) 39.021 ± ACRES

51-51-40-12-53-000 (ALL) - 18.736 ± ACRES

51-51-80-19-04-000 (ALL) - 3.738 ± ACRES

BEING A PART OF THE NORTHWEST QUARTER OF SECTION 19 AND THE SOUTHWEST AND THE SOUTHEAST QUARTER OF SECTION 12, TOWNSHIP 1, RANGE 8, OF THE UNITED STATES MILITARY LANDS, PERRY TOWNSHIP, MUSKINGUM COUNTY, OHIO.

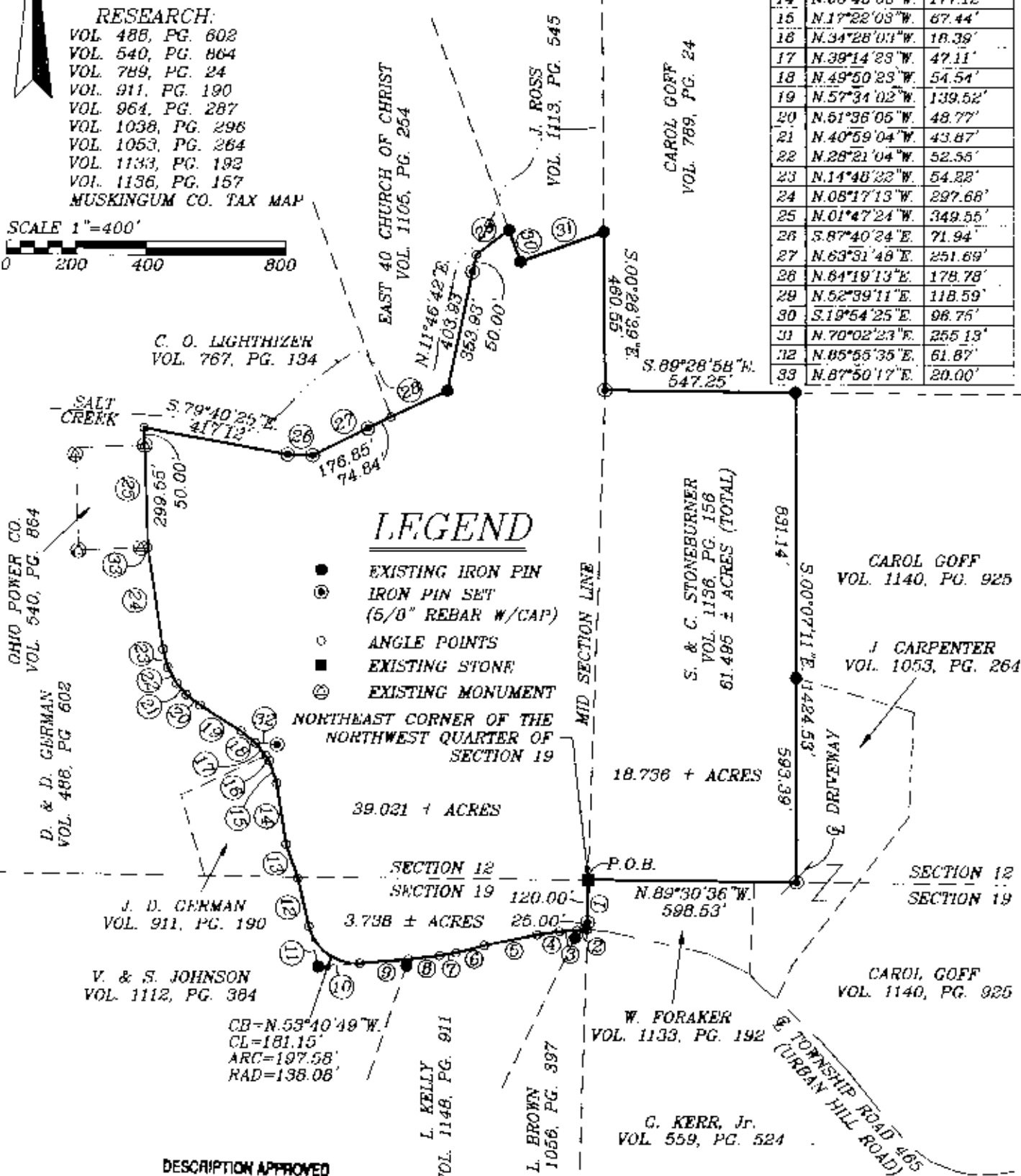
BEARINGS ARE BASED ON THE NORTH LINE OF THE 20.15 ACRE TRACT CONVEYED TO GEORGE A. KERR, JR. BY DEED RECORDED IN VOLUME 559, PAGE 524 OF THE MUSKINGUM COUNTY DEED RECORDS.

RESEARCH:

VOL. 488, PG. 602
VOL. 540, PG. 864
VOL. 789, PG. 24
VOL. 911, PG. 190
VOL. 964, PG. 287
VOL. 1038, PG. 296
VOL. 1053, PG. 264
VOL. 1133, PG. 192
VOL. 1136, PG. 157
MUSKINGUM CO. TAX MAP

SCALE 1"=400'
0 200 400 800

LINE DATA		
No.	BEARING	DISTANCE
1	S.00°44'37"W.	145.00'
2	S.86°26'17"W.	30.00'
3	S.86°26'17"W.	50.38'
4	S.80°41'27"W.	65.18'
5	S.78°13'37"W.	155.47'
6	S.75°05'17"W.	83.71'
7	S.79°40'47"W.	48.34'
8	S.83°06'37"W.	89.76'
9	S.85°19'37"W.	140.30'
10	S.85°19'37"W.	120.00'
11	N.12°41'16"W.	120.00'
12	N.12°41'16"W.	142.99'
13	N.18°30'03"W.	105.65'
14	N.08°48'03"W.	177.12'
15	N.17°22'03"W.	67.44'
16	N.34°28'03"W.	18.39'
17	N.39°14'28"W.	47.11'
18	N.49°50'23"W.	54.54'
19	N.57°34'02"W.	139.52'
20	N.51°36'05"W.	48.77'
21	N.40°59'04"W.	43.87'
22	N.28°21'04"W.	52.55'
23	N.14°48'22"W.	54.22'
24	N.08°17'13"W.	297.68'
25	N.01°47'24"W.	349.55'
26	S.87°40'24"E.	71.94'
27	N.63°31'48"E.	251.69'
28	N.64°19'13"E.	178.78'
29	N.52°39'11"E.	118.59'
30	S.19°54'25"E.	98.75'
31	N.70°02'23"E.	255.19'
32	N.05°55'35"E.	61.87'
33	N.87°50'17"E.	20.00'



LEGEND

- EXISTING IRON PIN
- ⊙ IRON PIN SET (5/8" REBAR W/CAP)
- ANGLE POINTS
- EXISTING STONE
- ⊕ EXISTING MONUMENT

NORTHEAST CORNER OF THE NORTHWEST QUARTER OF SECTION 19

39.021 ± ACRES

SECTION 12

SECTION 19

3.738 ± ACRES

J. D. GERMAN
VOL. 911, PG. 190

V. & S. JOHNSON
VOL. 1112, PG. 384

CB=N.53°40'49"W.
CL=181.15'
ARC=197.58'
RAD=138.08'

L. KELLY
VOL. 1148, PG. 911

L. BROWN
VOL. 1056, PG. 397

W. FORAKER
VOL. 1133, PG. 192

G. KERR, Jr.
VOL. 559, PG. 524

CAROL GOFF
VOL. 1140, PG. 925

J. CARPENTER
VOL. 1053, PG. 264

CAROL GOFF
VOL. 1140, PG. 925

S. & C. STONEBURNER
VOL. 1136, PG. 156
61.495 ± ACRES (TOTAL)

18.736 ± ACRES

SECTION 12
SECTION 19

DESCRIPTION APPROVED
FOR AUDITORS TRANSFER

BY *[Signature]*
1-13-2003

I HEREBY CERTIFY TO THE BEST OF MY KNOWLEDGE AND BELIEF THE ABOVE PLAT AND SURVEY TO BE CORRECT AS ENDORSED BY ME, THIS 9th DAY OF JANUARY, 2003.

MICHAEL L. SCHOLZ
REGISTERED SURVEYOR #6923

DIEDENBACH ENGINEERING, INC.
ZANESVILLE, OHIO
(740) 453-4850

DRAWN BY: AJS	DATE: 01-09-03
SCALE: 1"=400'	CHECKED BY: MDN
JOB NO. 4903	DRAWING NO. D\4903\4903

OFFICE COPY
NOT RECORDABLE