

SITUATED IN

The State of Ohio, County of Muskingum
Township of Salem, and being a part of
SW Qtr. of Sec. 19, T2, R6.

BASIS OF BEARING

Bearings are based on State
Plane Grid Coordinates, NAD83,
Ohio South, per GPS Observation.

REFERENCES

* As Noted on Plat
www.muskingumcountyauditor.org
www.mceo.org
http://recorder.muskingumcounty.org
Previous surveys by: Daniels, 1985
McPeck, 2023

BJ & LJ INVESTMENTS, LLC
OR 3133-734

OFFICE COPY

NOT RECORDABLE

Brian Kelly McPeck
Reg. Surveyor No. 8517

Date



This plat was prepared by McPeck Land Surveying, LLC
in accordance with Chapter 4733-37 of the Administrative Code,
and is intended to be used for the legal transfer of the property
described and does not intend to describe all or any easements of
record, nor encroachments unless otherwise intended.

Survey Split

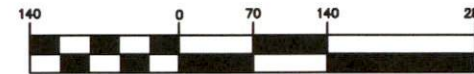
LEGEND

- Unmarked Point
- Iron Pin Found
- ▲ Railroad Spike Found
- ⊙ Iron Pin Set
- ⌵ Property Hook

BOUNDARY LINE TABLE

LINE	BEARING	DISTANCE
L1	N 62°10'18" W	29.91'
L2	N 21°54'42" W	112.30'
L3	N 37°14'30" W	44.83'
L4	N 76°18'29" W	60.56'
L5	S 87°02'13" W	117.12'
L6	S 85°34'56" W	149.92'

GRAPHIC SCALE



(IN FEET)
1 inch = 140 ft.



www.mcpecklandsurveying.com
email: brian@mcpecklandsurveying.com
1705 East Pike, * Zanesville, Oh 43701 * 740.704.6073

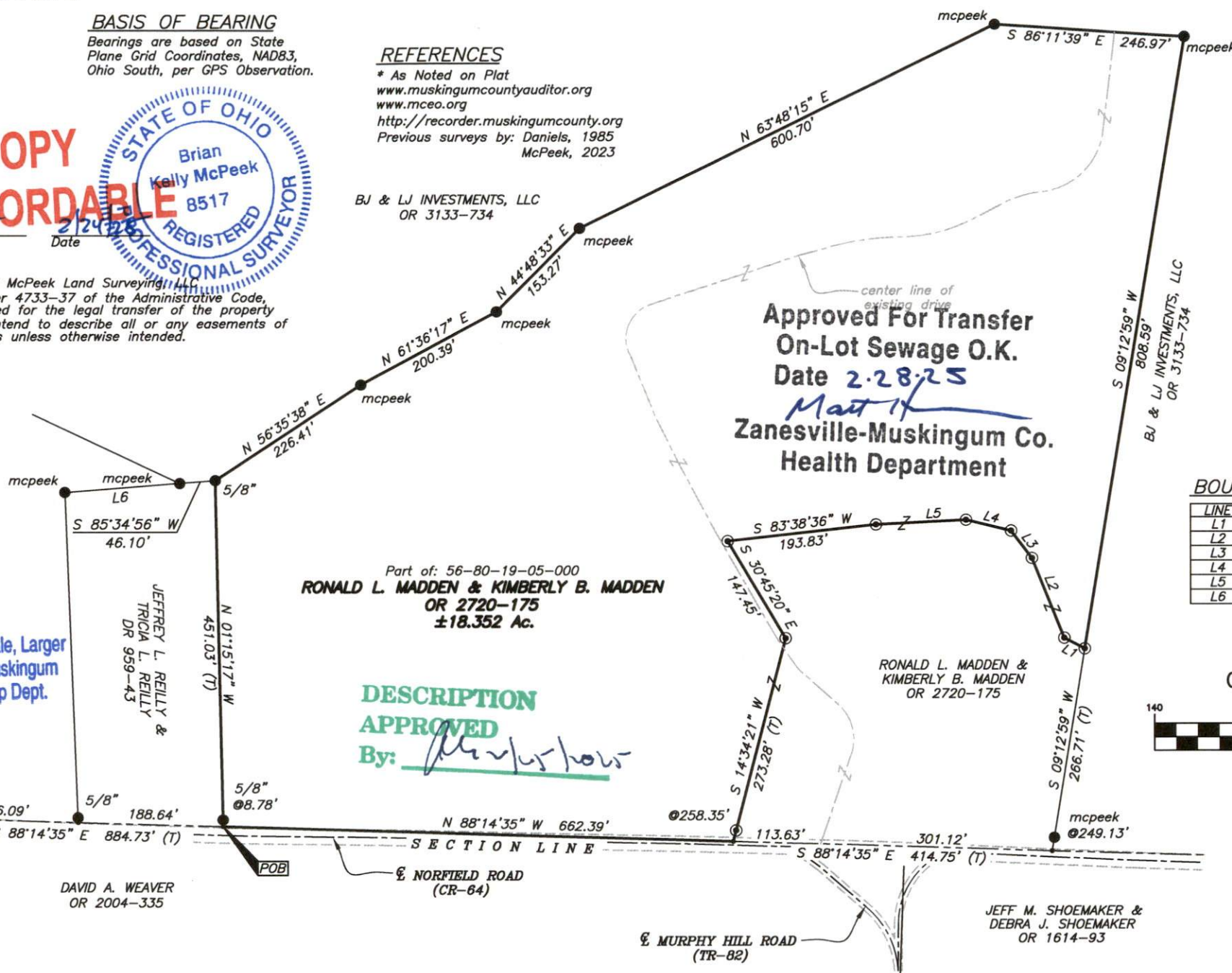
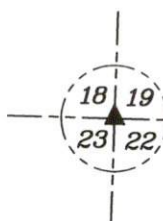
Approved For Transfer
On-Lot Sewage O.K.
Date 2.28.25
Matt H
Zanesville-Muskingum Co.
Health Department

Part of: 56-80-19-05-000
RONALD L. MADDEN & KIMBERLY B. MADDEN
OR 2720-175
±18.352 Ac.

DESCRIPTION
APPROVED

By: *[Signature]*

Reduced copy, not to scale, Larger
copy available in the Muskingum
County Engineer's Map Dept.



APPROVED
MUSKINGUM COUNTY
PLANNING COMMISSION/DIRECTOR

DATE