

SITUATED IN

The State of Ohio, County of Muskingum Township of Salem, and being a part of SW Qtr. of Sec. 19, T2, R6.

BASIS OF BEARING

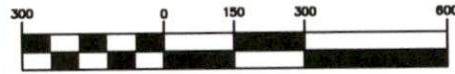
Bearings are based on State Plane Grid Coordinates, NAD83, Ohio South, per GPS Observation.

REFERENCES

* As Noted on Plat
www.muskingumcountyauditor.org
www.mceo.org
http://recorder.muskingumcounty.org

Reduced copy, not to scale, Larger copy available in the Muskingum County Engineer's Map Dept.

GRAPHIC SCALE



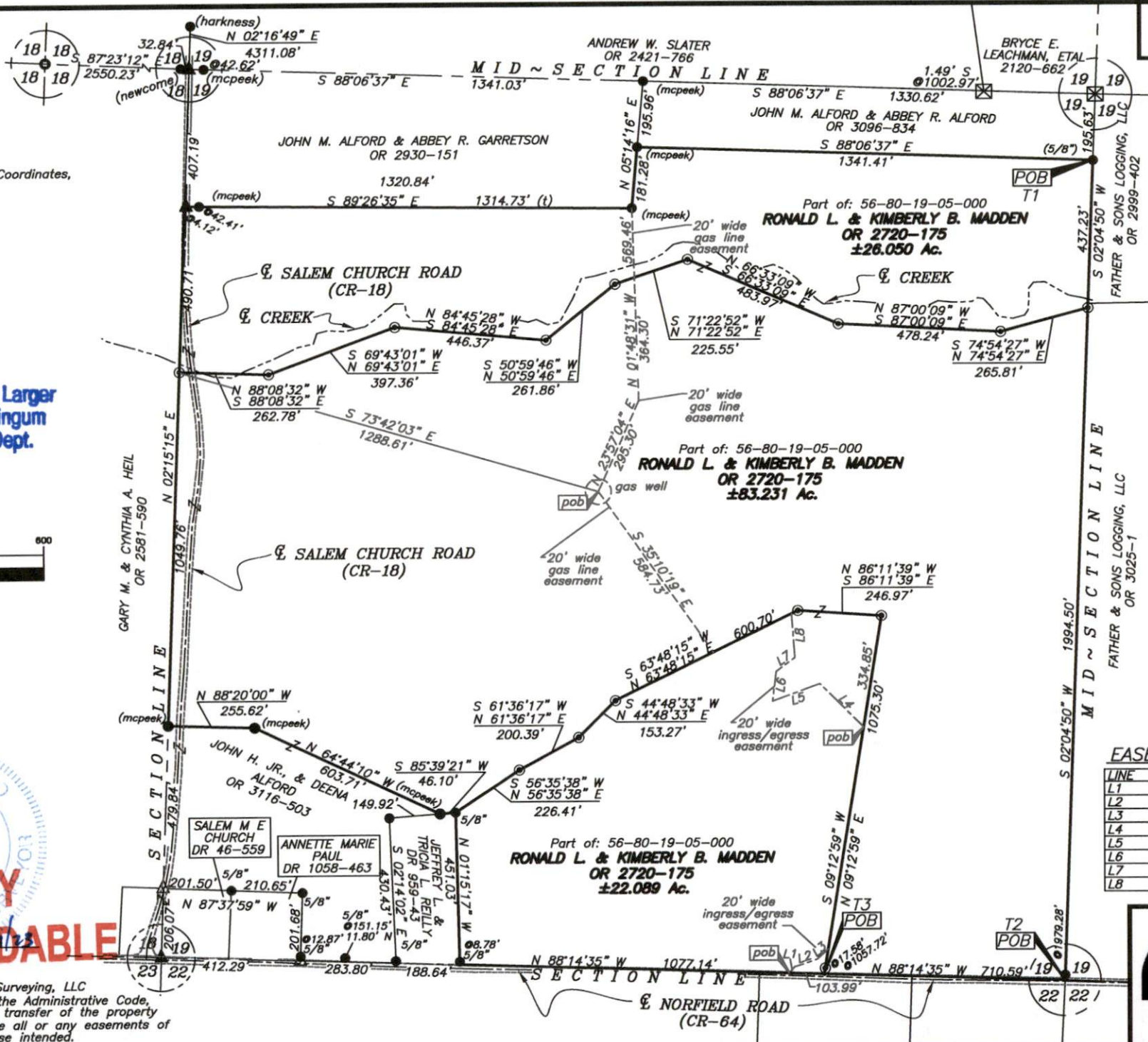
(IN FEET)
1 inch = 300 ft.



OFFICE COPY NOT RECORDABLE

Brian Kelly McPeck
Reg. Surveyor No. 8517

This plat was prepared by McPeck Land Surveying, LLC in accordance with Chapter 4733-37 of the Administrative Code, and is intended to be used for the legal transfer of the property described and does not intend to describe all or any easements of record, nor encroachments unless otherwise intended.



Survey Split(s)



LEGEND

- ▲ Railroad Spike Found
- △ Railroad Spike Set
- Iron Pin Found
- Pipe Found w/cap
- ⊠ Stone Found
- Z- Property Hook
- ⊙ Iron Pin Set
- Ex. Fence

DESCRIPTION APPROVED

By: *[Signature]*

EASEMENT(S) LINE TABLE

LINE	BEARING	DISTANCE
L1	N 40°51'27" E	24.32'
L2	N 71°43'00" E	70.62'
L3	N 47°19'13" E	44.91'
L4	N 44°45'52" W	181.83'
L5	S 69°58'02" W	149.28'
L6	N 06°52'54" E	88.74'
L7	N 53°35'08" E	69.11'
L8	N 04°15'25" W	130.87'

MCPEEK LAND SURVEYING LLC
 www.mcpeeklandsurveying.com
 email: brian@mcpeeklandsurveying.com
 1705 East Pike, * Zanesville, OH 43701 * 740.704.6073