

SITUATED IN

The State of Ohio, County of Muskingum
Township of Salem, and being a part
of SE Qtr. of Sec. 19, T2, R6.

BASIS OF BEARING

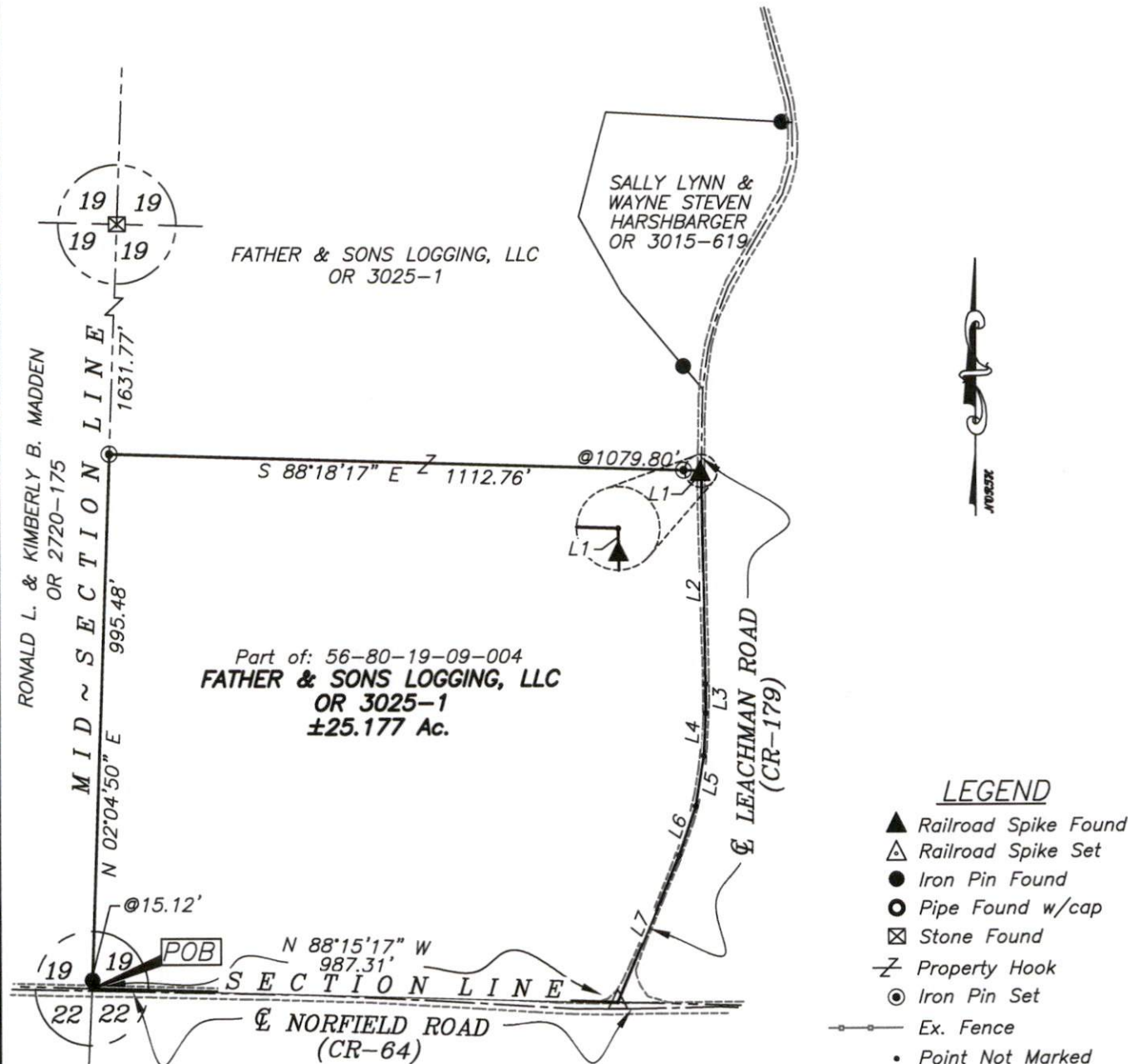
Bearings are based on State Plane Grid Coordinates,
NAD83, Ohio South, per GPS Observation.

REFERENCES

* As Noted on Plat
www.muskingumcountyauditor.org
www.mceo.org
http://recorder.
muskingumcounty.org

LINE TABLE

LINE	BEARING	DISTANCE
L1	S 01°23'30" W	4.96'
L2	S 00°57'47" E	393.63'
L3	S 00°10'13" E	54.33'
L4	S 02°43'20" W	80.19'
L5	S 09°24'46" W	96.16'
L6	S 18°58'27" W	96.93'
L7	S 23°16'02" W	296.61'

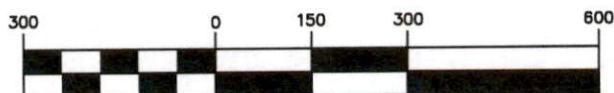


DESCRIPTION

APPROVED

By: *Brian Kelly McPeck*

GRAPHIC SCALE



(IN FEET)

1 inch = 300 ft.

OFFICE COPY
NOT RECORDABLE

Brian Kelly McPeck
Reg. Surveyor No. 8517

This plat was prepared by McPeck Land Surveying, LLC
in accordance with Chapter 4733-37 of the Administrative Code,
and is intended to be used for the legal transfer of the property
described and does not intend to describe all or any easements of
record, nor encroachments unless otherwise intended.



MCPECK
LAND
SURVEYING, LLC

www.mcpeeklandsurveying.com
email: brian@mcpeeklandsurveying.com
1705 East Pike, * Zanesville, Oh 43701 * 740.704.6073