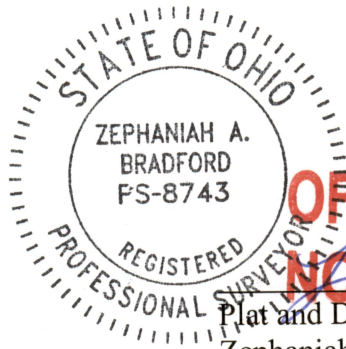


62-17-02-06-001 c

THENCE with the west line of said 20.619 acre tract and with the west line of the above referenced 14.691 acre tract (Max J. Perdue and Donna A. Walker, Official Record 2237, Page 262) and with the east line of said 273.544 acre tract South 03 deg. 59 min. 46 sec. West, 2181.49, passing through an iron pin (set) at 2142.62 feet, to the PLACE OF BEGINNING, containing 152.144 acres, more or less, being comprised of 143.822 acres in the Northwest Quarter of Section 7 and 8.322 acres in the Southwest Quarter of Section 7, but subject to all legal highways, rights-of-way and easements.

Bearings are oriented to the State Plane Coordinate System: Ohio South Zone (3402); Horizontal Datum: NAD83 (2011). Iron pins indicated as (set) are a 5/8-inch iron bar (30-inches in length) with a yellow plastic cap stamped "Bair & Goodie". Date of Survey: November 2020. Plat and description prepared by Zephaniah A. Bradford, P.S. 8743.



**OFFICE COPY
NOT RECORDABLE**

Plat and Description Prepared By:
Zephaniah A. Bradford P.S. No. 8743

DESCRIPTION

APPROVED

By: A. M. Sullivan