

### SITUATED IN

The State of Ohio, County of Muskingum  
Township of Springfield, and being a part  
of the SE Qtr. Sec. 16, T16, R14.

### BASIS OF BEARING

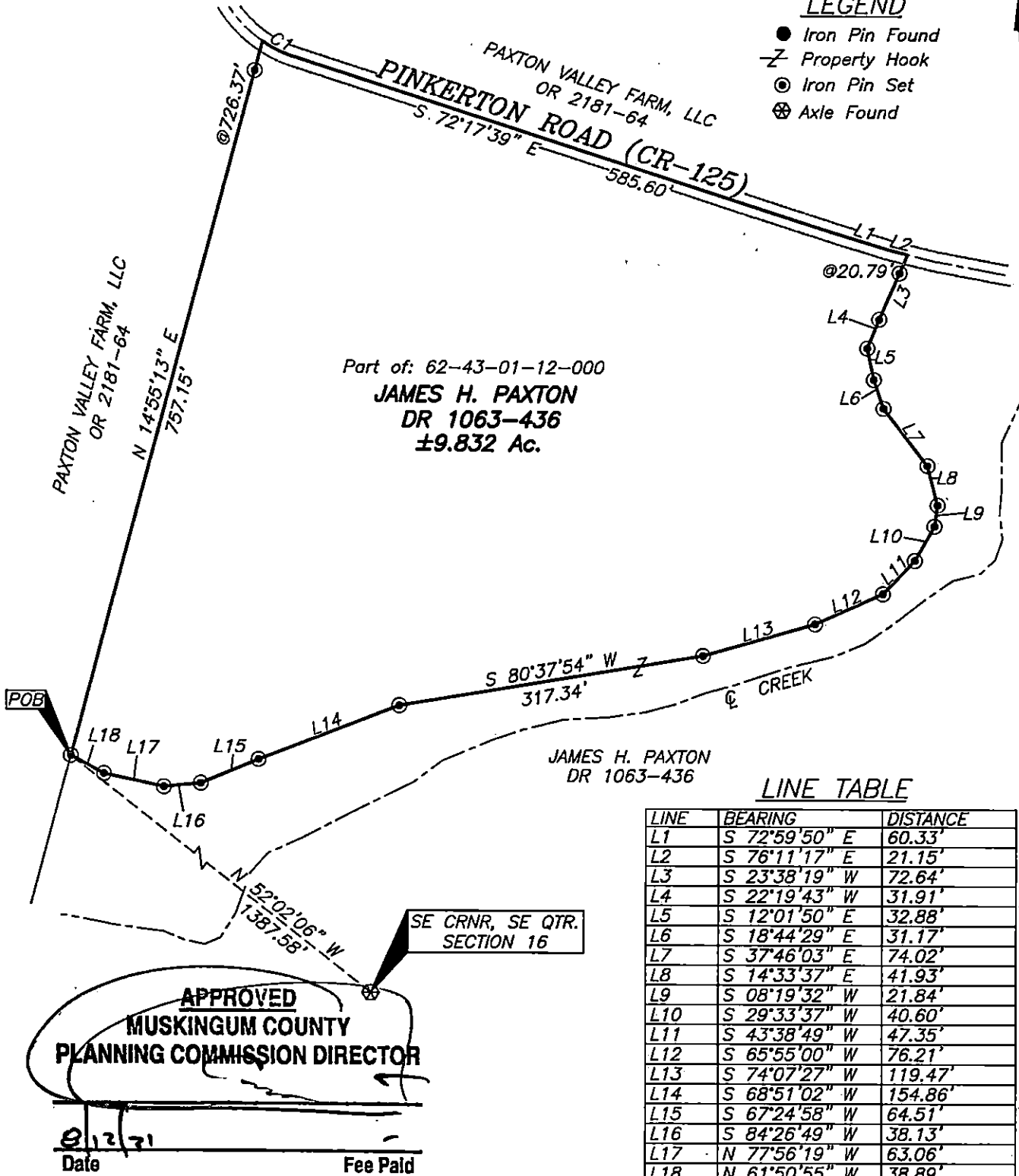
Bearings & distances are based on State Plane Grid Coordinates,  
NAD83, Ohio South, per GPS Observation.

### REFERENCES

\* As Noted on Plat  
www.muskingumcountyauditor.org  
www.mceo.org  
http://recorder.  
muskingumcounty.org

### LEGEND

- Iron Pin Found
- Z- Property Hook
- ⊙ Iron Pin Set
- ⊗ Axle Found



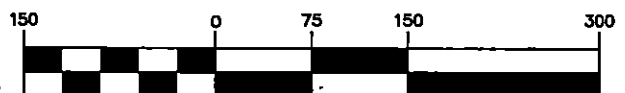
### LINE TABLE

LINE	BEARING	DISTANCE
L1	S 72°59'50" E	60.33'
L2	S 76°11'17" E	21.15'
L3	S 23°38'19" W	72.64'
L4	S 22°19'43" W	31.91'
L5	S 12°01'50" E	32.88'
L6	S 18°44'29" E	31.17'
L7	S 37°46'03" E	74.02'
L8	S 14°33'37" E	41.93'
L9	S 08°19'32" W	21.84'
L10	S 29°33'37" W	40.60'
L11	S 43°38'49" W	47.35'
L12	S 65°55'00" W	76.21'
L13	S 74°07'27" W	119.47'
L14	S 68°51'02" W	154.86'
L15	S 67°24'58" W	64.51'
L16	S 84°26'49" W	38.13'
L17	N 77°56'19" W	63.06'
L18	N 61°50'55" W	38.89'

### CURVE TABLE

CURVE	RADIUS	ARC LENGTH	CHORD LENGTH	CHORD BEARING	DELTA ANGLE
C1	127.28'	32.41'	32.32'	S 63°13'50" E	14°35'17"

### GRAPHIC SCALE



( IN FEET )

1 inch = 150 ft.

### DESCRIPTION

APPROVED

By: *[Signature]*

**OFFICE COPY**

**NOT RECORDABLE**

Brian Kelly McPeck

Reg. Surveyor No. 8517

This plat was prepared by McPeck Land Surveying, LLC  
in accordance with Chapter 4733-37 of the Administrative Code,  
and is intended to be used for the legal transfer of the property  
described and does not intend to describe all or any easements of  
record, nor encroachments unless otherwise intended.

8/11/21 Date



**MCPECK  
LAND  
SURVEYING**

www.mcpecklandsurveying.com  
email: brian@mcpecklandsurveying.com  
340 Robin Hood Ln., Zanesville, Oh 43701 • 740.704.6073