

Being a part of the East Half of Section 14, Township 16,
Range 14, Springfield Township, Muskingum County, Ohio and being fur-
ther described as follows:

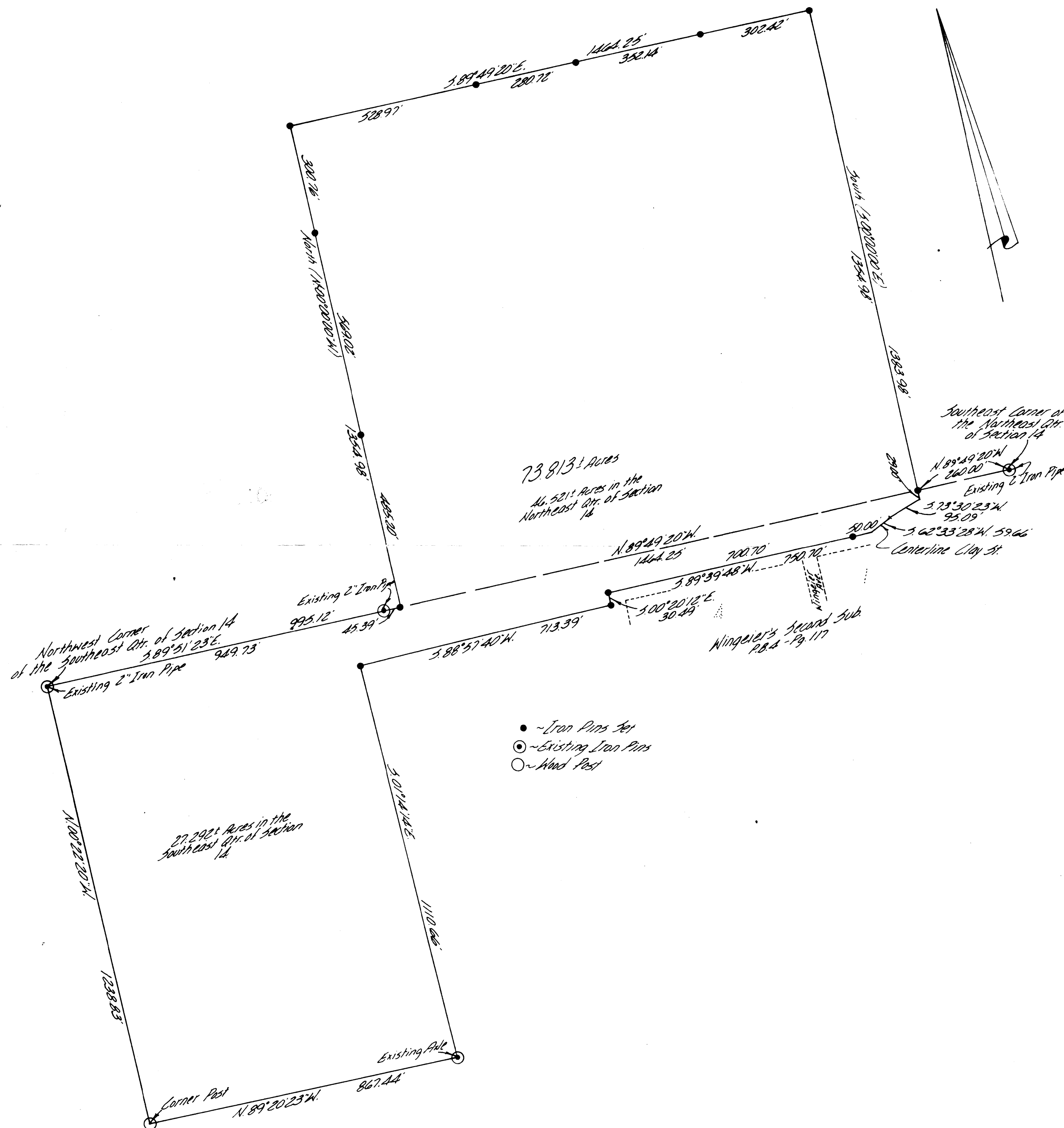
Beginning at a point marked by an existing two inch iron pipe at the Northwest Corner of the Southeast Quarter of Section 14: thence South 89 degrees 51 minutes 23 seconds East 995.12 feet along the North Line of the Southeast Quarter of Section 14, to a point marked by an iron pin, passing a point marked by an existing two inch iron pipe at 949.73 feet; thence North 1354.98 feet to a point marked by an iron pin, passing points marked by iron pins at 485.20 feet and 1054.22 feet; thence South 89 degrees 49 minutes 20 seconds East 1464.25 feet to a point marked by an iron pin, passing points marked by iron pins at 528.97 feet, 809.69 feet, and 1161.83 feet; thence South 1383.98 feet to a point in the center of Clay Street, passing a point marked by an iron pin at 1354.98 feet, said point being North 89 degrees 49 minutes 20 seconds West 260.00 feet from a point marked by an existing two inch iron pipe at the Southeast Corner of the Northeast Quarter of Section 14; thence South 73 degrees 30 minutes 23 seconds West 95.09 feet to a point in the center of Clay Street; thence South 62 degrees 33 minutes 28 seconds West 59.66 feet to a point in the center of Clay Street; thence South 89 degrees 39 minutes 48 seconds West 750.70 feet along the North Line of Clay Street to a point marked by an iron pin, passing a point marked by an iron pin at 50.00 feet; thence South 00 degrees 20 minutes 12 seconds East 30.49 feet to a point marked by an iron pin; thence South 88 degrees 57 minutes 40 seconds West 713.39 feet to a point marked by an iron pin; thence South 01 degrees 14 minutes 14 seconds East 1110.66 feet to a point marked by an existing axle; thence North 89 degrees 20 minutes 23 seconds West 867.44 feet to a point marked by a wood post; thence North 00 degrees 22 minutes 20 seconds West 1238.83 feet along the West Line of the Southeast Quarter of Section 14, to the place of beginning.

Containing 73.813 more or less acres, subject to all legal road right-of-ways.

I hereby certify the above description to be correct as prepared by me, this 15th day of January 1979.

**OFFICE COPY
NOT RECORDABLE**

W. J. BIEDENBACH
REG. SURVEYOR #5718



W. J. BIEDENBACH & ASSOC.
Surveying & Mapping
3120 Lisa Ln., Zanesville, Ohio 43701
(614) 453-4850

Drawn by: JDB	Date: 1/15/78
Scale: 1"=200'	Checked by:
Job No. 483-12-78	B. Thompson