



Linn Engineering, Inc.

Civil Engineering Consultants

740-452-7434 • 1-800-991-7434 • FAX 740-452-5198

534 Market Street • P.O. Box 2086 • Zanesville, Ohio 43702-2086

62-78-01-02
2530 Old River Rd

Situated in the State of Ohio, County of Muskingum, Township of Springfield, bounded and described as follows:

Being a part of Fractional Section 5, Township 11, Range 13, of the Congress Lands East of the Scioto River, and being the lands owned by Marie Hogue as recorded in Muskingum County Deed Record 1129-571, and being more particularly described as follows:

Beginning for reference at the Southwest corner of the Northwest Quarter of Fractional Section 5; thence by previous deed the following nine courses:

- 1) North 05 degrees 20 minutes 00 seconds East 430.56 feet to a point;
- 2) South 74 degrees 52 minutes 00 seconds East 479.53 feet to a point;
- 3) South 73 degrees 32 minutes 00 seconds East 407.36 feet to a point;
- 4) South 42 degrees 51 minutes 00 seconds East 57.28 feet to a point;
- 5) South 71 degrees 24 minutes 00 seconds East 186.40 feet to a point;
- 6) North 20 degrees 07 minutes 00 seconds East 118.44 feet to a point;
- 7) North 31 degrees 10 minutes 00 seconds East 212.31 feet to a point;
- 8) North 01 degrees 42 minutes 00 seconds West 304.74 feet to a point;
- 9) South 83 degrees 20 minutes 00 seconds East 262.40 feet to the mean high water line of the east bank of Moxahala Creek, a.k.a. Jonathon Creek and the principal place of beginning;

thence along said mean high water line the following 6 courses:

- 1) North 11 degrees 55 minutes 40 seconds East 80.56 feet to a point;
- 2) North 08 degrees 36 minutes 16 seconds East 94.12 feet to a point;
- 3) North 10 degrees 48 minutes 14 seconds East 93.17 feet to a point;
- 4) North 12 degrees 30 minutes 48 seconds East 44.53 feet to a point;
- 5) North 05 degrees 00 minutes 18 seconds East 61.27 feet to a point;
- 6) North 18 degrees 04 minutes 12 seconds East 67.90 feet to a point on the southwest corner of lands now owned by Wilma Hettich (DR 1541-544);

thence along said Hettich's south line South 74 degrees 42 minutes 04 seconds East 250.83 feet to an existing iron pipe found on the northwest corner of land now owned by R. and P. Tilley (DR 1145-857), passing an iron pipe found at 40.66 feet;

thence along Tilley's west line South 13 degrees 58 minutes 00 seconds West 309.34 feet to a point in the centerline of Old River Road (CR-6), passing an iron pipe found at 286.27 feet;

thence along the said centerline of Old River Road the following seven courses:

- 1) South 70 degrees 49 minutes 02 seconds West 28.71 feet to a point;
- 2) South 62 degrees 00 minutes 34 seconds West 43.50 feet to a point;
- 3) South 55 degrees 39 minutes 46 seconds West 63.83 feet to a point;
- 4) South 60 degrees 55 minutes 27 seconds West 33.37 feet to a point;
- 5) South 81 degrees 46 minutes 26 seconds West 19.68 feet to a point;
- 6) North 83 degrees 59 minutes 45 seconds West 33.63 feet to a point;

7) North 80 degrees 32 minutes 16 seconds West 53.32 feet to a point on the mean high water line of the said east bank of Moxahala Creek;
thence North 11 degrees 55 minutes 40 seconds East 6.67 feet to the principal place of beginning, containing 2.23 acres, more or less, subject to all legal road right of ways and applicable easements, written or implied.

Bearings are based on information given in Muskingum County Deed Record 1587, Page 734.

This description is written based on an actual field survey completed on October 26, 2001 by Jack D. Newcome, Reg. No. 7321.

Jack D. Newcome
Reg. No. 7321

10/29/01

Date

DESCRIPTION APPROVED
FOR AUDITOR'S TRANSFER

BY K. Busky
10-31-2001

All of Parcel No.: 62-62-78-01-02-000 (2.23 ac.)

SITUATED IN

The State of Ohio, County of Muskingum
Township of Springfield, and being a part
of Fractional Section 5, T11, R13 of the
Congress Lands East of the Scioto River.

BASIS OF BEARING

Bearings are based on DR 1587-73A.

PARCEL NO.

All of: 62-62-78-01-02-000(±2.23 ac.)

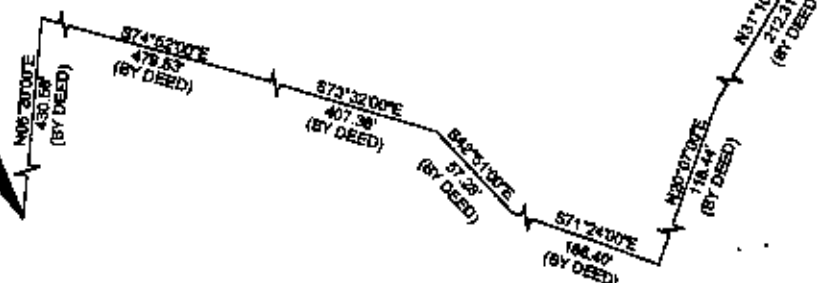
GRAPHIC SCALE



(IN FEET)

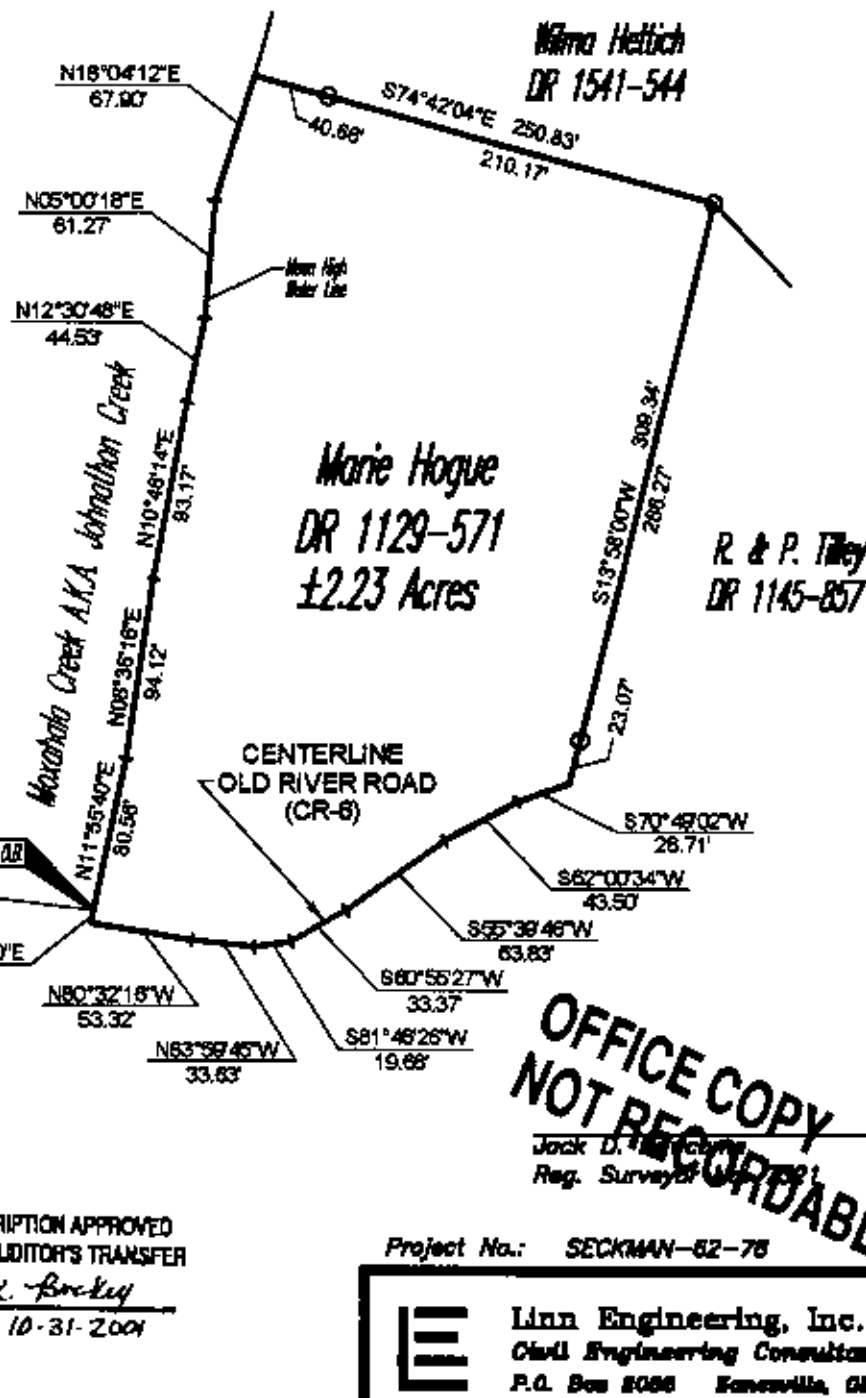
1 inch = 100 ft.

Southwest Corner of the
Northeast Quarter of
Fractional Section 5



DESCRIPTION APPROVED
FOR AUDITOR'S TRANSFER

BY K. Brockley
10-31-2004



LEGEND

○ Pipe Found

REFERENCES

DR 1541-544
DR 1129-571
DR 1145-857
Tax Map 62-78

**OFFICE COPY
NOT RECORDABLE**

Jack D. [Signature]
Reg. Surveyor

Date

Project No.: SECKMAN-62-78



Linn Engineering, Inc.
Civil Engineering Consultants
P.O. Box 8086 Kansasville, Ohio 45902-8086

740-468-7484