

**SURVEY DESCRIPTION
FOR
M/E Properties**

PART OF AUDITORS PARCEL
63-09-04-05-000 (3.57 acres)

Situated in the South half of Section 13, T-16, R-14, Village of South Zanesville, Muskingum County, Ohio. Being part of the lands of M/E Properties, LLC conveyed in Deed Book 1888 page 404 of the Muskingum County Deed records, and being described as follows:

Commencing at the Northeast corner of lot 1072 of Beechwood Park Addition (P.B. 2, Pg. 99 & 100); thence, S.86°54'10"E. a distance of 275.39 feet along the North line of the South half of section 13 to a found iron pin on the Northwest corner of the lands of M/E Properties, LLC (1888/404), BEING THE POINT OF BEGINNING;

Thence, S.86°54'10"E. a distance of 346.12 feet along the South line of Clay Street to a set drill hole on the Northwest corner of the lands, now or formerly, owned by Browning Enterprises (1514/249);

Thence, S.24°55'58"W. a distance of 107.10 feet along said Browning lands to a drill hole set in a concrete retainer wall;

Thence, N.66°09'45"W. a distance of 72.92 feet through the lands of M/E Properties (1888/404) to a set rebar;

Thence, S.31°19'35"W. a distance of 57.66 feet through said M/E lands to a set rebar;

Thence, S.36°56'49"W. a distance of 335.26 feet through said M/E lands to a set rebar;

Thence, S.24°00'14"W. a distance of 366.31 feet through said M/E lands to a set rebar;

Thence, S.65°50'47"E. a distance of 54.94 feet through said M/E lands to a found iron pin on the corner of the lands of McClelland, Inc. (1978/810);

Thence, S.24°58'22"W. a distance of 114.72 feet along said McClelland Inc. lands to a point;

Thence, N.64°47'43"W. a distance of 166.77 feet along said McClelland Inc. Lands to a found iron pin on the East line of the lands, now or formerly, owned by R. & J. McClelland (752/312);

Richard McClelland Survey 3.57 Acres

Page 2 of 2

Thence, **N.20°27'03"E.** a distance of **632.42** feet along said McClelland lands to a found iron pin on the Southwest corner of the lands of R. & J. McClelland (1978/813);

Thence, **N.74°19'47"E.** a distance of **35.95** feet along said McClelland lands to a found iron pin;

Thence, **N.11°54'41"E.** a distance of **195.57** feet along said McClelland Lands to the point of beginning.

The above described parcel contains 3.57 acres, more or less, and is subject to all legal easements and right of ways. All set rebars are 5/8" x 30" rebars with plastic I.D. caps. North is based upon an assumed meridian.

Reserving unto the grantors and assigns is a 20 foot wide drainage easement along and parallel to the entire east line of the above described parcel.

Description was prepared from an actual field survey by Bowman Surveying, Stephen M. Bowman, P.S.#7135. July 24 2007.

APPROVED FOR CLOSURE

[Signature] 7/31/2007

EXEMPT FROM
PLANNING COMMISSION

[Signature] 7/31/2007

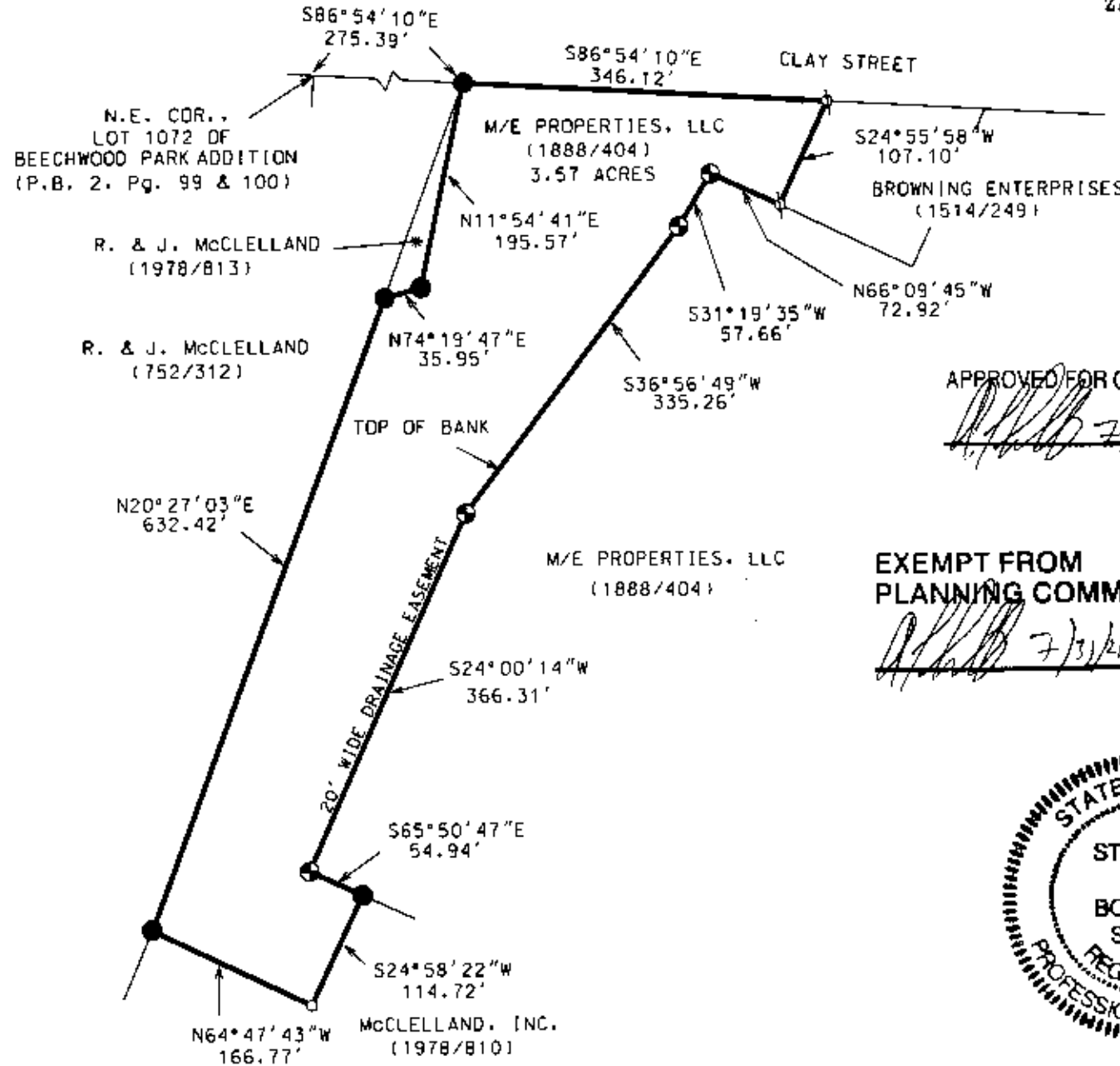
**OFFICE COPY
NOT RECORDABLE**

SURVEY PLAT FOR M/E PROPERTIES

SITUATED IN THE SOUTH HALF OF SECTION 13, T-18, R-14, VILLAGE OF SOUTH ZANESVILLE, MUSKINGUM COUNTY, OHIO.

PART OF AUDITORS PARCEL

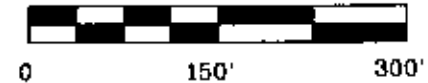
63-09-04-05-000



APPROVED FOR CLOSURE

EXEMPT FROM PLANNING COMMISSION

NORTH IS BASED UPON AN ASSUMED MERIDIAN
SCALE 1" = 150'



LEGEND

- IRON PIN FOUND
- ⊕ 5/8" X 30" REBAR SET W/ I.D. CAP
- POINT
- ⊗ DRILL HOLE

I CERTIFY THIS DRAWING WAS PREPARED FROM AN ACTUAL FIELD SURVEY I CONDUCTED

**OFFICE COPY
NOT RECORDABLE**



BOWMAN SURVEYING

P.O. BOX 3261
ZANESVILLE, OHIO 43702
PHONE 740-454-0496

JOB: M-07169 DATE: 07/24/07