

BOWMAN SURVEYING
Zanesville, Ohio 43701
PH. (740) 819-1087

SURVEY DESCRIPTION
FOR
Eugene Hardy

ALL OF AUDITORS PARCEL
66-20-10-07-000 (1.30 Acres)

Situated in the Southeast Quarter of Section 10, T-1, R-5, Union Township, Muskingum County, Ohio. Being the lands of Eugene Hardy as conveyed in Deed Book 1043 page 280 of the Muskingum County Deed records and being described as follows:

Commencing at a iron pin found marking the Southwest corner of the Northeast quarter of section 10; Thence, N.05°07'42"E. a distance of 320.95 feet along the West line of said quarter section to a found concrete right of way monument for State Route 83; Thence, S.69°06'39"E. a distance of 121.44 feet along the West line of said right of way to a found concrete right of way monument; Thence, S.32°41'40"E. a distance of 440.91 feet along the West line of said right of way to a set rebar, being the point of beginning;

Thence, S.32°41'40"E. a distance of 200.00 feet along the West line of said right of way to a set rebar;

Thence, S.01°08'56"E. a distance of 87.92 feet along the West line of said right of way to a point;

Thence, S.28°06'40"E. a distance of 135.65 feet along the West line of said right of way to a point;

Thence, S.15°28'33"W. a distance of 41.94 feet along the West line of said right of way to a point;

Thence, S.44°26'44"E. a distance of 20.80 feet along the West line of said right of way to a point on the West line of the lands, now or formerly, owned by M. Weingartner (791/274);

Thence, S.46°54'49"W. a distance of 97.49 feet along the West line of said Weingartner lands to a found iron pin;

Thence, S.43°08'04"W. a distance of 72.43 feet along the West line of said Weingartner lands to a found iron pin;

Thence, S.30°20'23"W. a distance of 102.89 feet along the West line of said Weingartner lands to a found iron pin on the North line of Interstate 70;

Hardy Survey 1.30 acres

Thence, **N.76°24'37"W.** a distance of **52.05** feet along the North line of said interstate to a found iron pin;

Thence, **N.35°18'41"E.** a distance of **52.93** feet along the East line of The lands, now or formerly, owned by D. & P. Bradford (823/091) to a found iron pin;

Thence, **S.75°46'09"E.** a distance of **19.97** feet along said Bradford lands to a found iron pin;

Thence, **N.26°46'00"E.** a distance of **63.10** feet along said Bradford lands to a point;

Thence, **N.43°08'08"E.** a distance of **76.79** feet along said Bradford lands to a point;

Thence, **N.46°54'47"E.** a distance of **60.07** feet along said Bradford lands to a point;

Thence, **N.15°27'53"E.** a distance of **58.12** feet along said Bradford lands to a point;

Thence, **N.28°06'39"W.** a distance of **135.65** feet along said Bradford lands to a point;

Thence, **N.01°08'34"W.** a distance of **72.65** feet along said Bradford lands to a set rebar;

Thence, **S.57°18'20"W.** a distance of **165.11** feet along said Bradford lands to a set rebar;

Thence, **N.32°41'40"W.** a distance of **200.00** feet along said Bradford lands to a found concrete monument;

Thence, **N.57°18'20"E.** a distance of **200.00** feet along said Bradford lands to the point of beginning.

The above described parcel contains 1.30 acres, more or less, and is subject to all legal easements and right of ways. All set rebars are 5/8" x 30" rebars with plastic I.D. caps. North is based upon an assumed meridian.

Description was prepared from an actual field survey by Bowman Surveying, Stephen M. Bowman, P.S.#7135, March 21, 2005.

APPROVED FOR CLOSURE

ASLH 3-24-2005

OFFICE COPY
NOT RECORDABLE

EXEMPT FROM
PLANNING COMMISSION

ASLH 3-29-2005

AUDITORS PARCEL

66-20-10-07-000

SURVEY PLAT FOR EUGENE HARDY

SITUATED IN THE SOUTHEAST QUARTER OF SECTION 10, T-1, R-6, UNION
TOWNSHIP, MUSKINGUM COUNTY, OHIO.

APPROVED FOR CLOSURE

ASB 3-29-2005

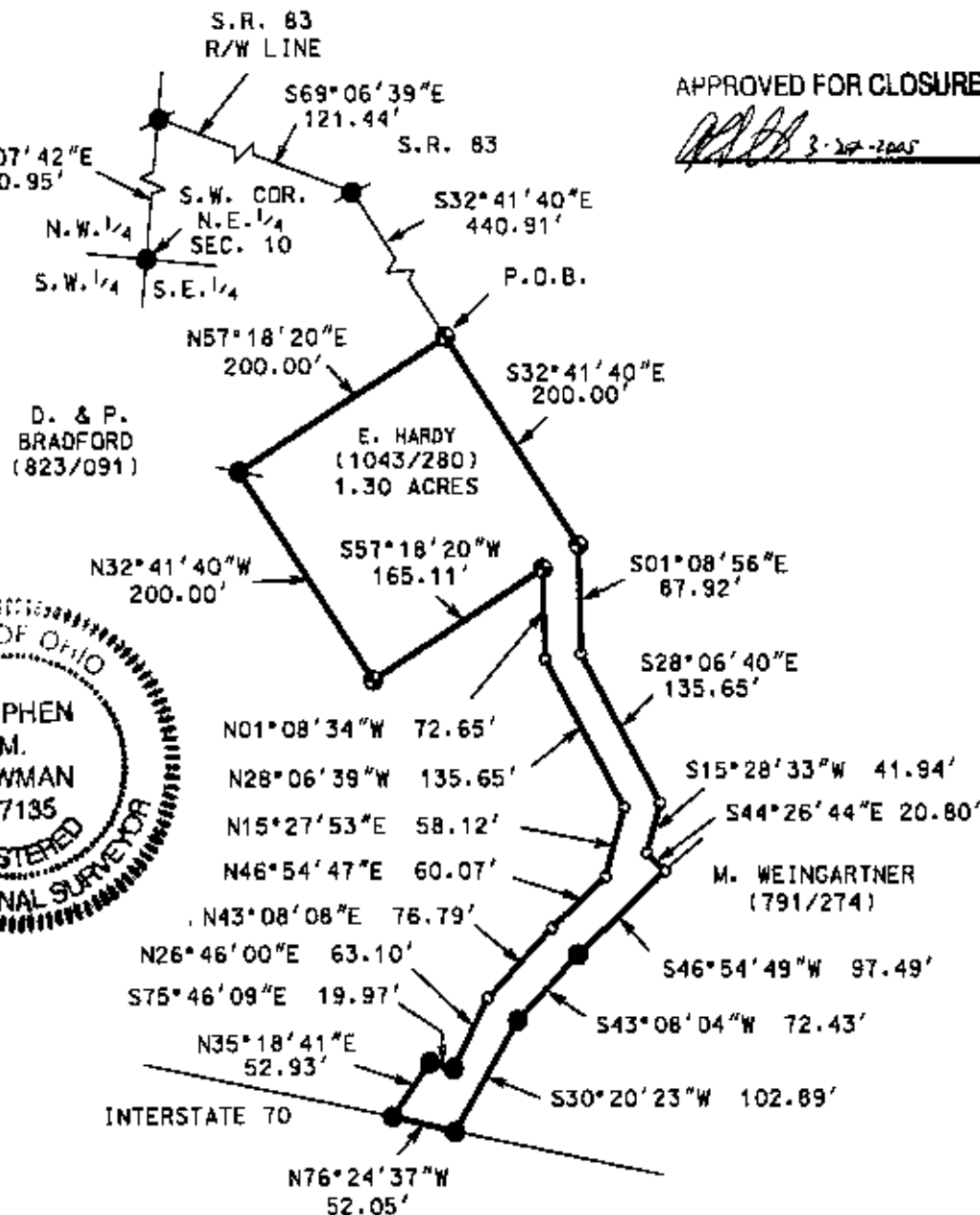
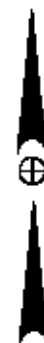
NORTH IS BASED UPON
AN ASSUMED MERIDIAN

SCALE 1" = 150'



EXEMPT FROM
PLANNING COMMISSION

ASB 3-29-2005



LEGEND

- IRON PIN FOUND
- ⊙ 3/4" X 30" REBAR SET W/ I.D. CAP
- POINT
- CONC. MONUMENT FOUND

I CERTIFY THIS DRAWING WAS PREPARED
FROM AN ACTUAL FIELD SURVEY I CONDUCTED

**OFFICE COPY
NOT RECORDABLE**

STEPHEN M. BOWMAN, P.S. #7135

BOWMAN SURVEYING

38 N. 4th STR., RM 103
ZANESVILLE, OHIO 43701
PHONE/FAX 740-454-0496

JOB: M-05070

DATE: 03/21/05

