

TERRY FINLEY

Ohio Registered Surveyor #S-7222

155 Mockingbird Hill, Zanesville, OH 43701

Phone or FAX (740) 454-8721

**LEGAL DESCRIPTION
For Russell Moorehead**

Situated in the State of Ohio, County of Muskingum, Township of Union, and being part of the northeast quarter of Section 17, Township 1, Range 5, and being part of those lands intended to be described in Deed Volume 1119, page 517; being further bounded and described as follows:

Commencing at the northeast corner of Section 17, thence, along the section line, north 90 degrees – 00 minutes – 00 seconds west, 1689.92 feet to a point in Township Road 442, and the *true point of beginning* for the parcel herein intended to be described;

Thence, along the east line of an existing roadway, the following sixteen (16) courses and distances:

1. south 51 degrees – 09 minutes – 41 seconds west, 28.93 feet to a point;
2. south 63 degrees – 33 minutes – 38 seconds west, 123.44 feet to a point;
3. south 56 degrees – 04 minutes – 49 seconds west, 44.79 feet to a point;
4. south 49 degrees – 49 minutes – 29 seconds west, 48.24 feet to a point;
5. south 43 degrees – 07 minutes – 08 seconds west, 219.53 feet to a point;
6. south 23 degrees – 44 minutes – 26 seconds west, 48.07 feet to a point;
7. south 10 degrees – 14 minutes – 47 seconds west, 50.28 feet to a point;
8. south 01 degrees – 10 minutes – 03 seconds east, 175.77 feet to a point;
9. south 07 degrees – 54 minutes – 06 seconds east, 34.63 feet to a point;
10. south 13 degrees – 20 minutes – 46 seconds east, 49.69 feet to a point;
11. south 16 degrees – 26 minutes – 15 seconds east, 253.63 feet to a point;
12. south 18 degrees – 39 minutes – 43 seconds east, 117.66 feet to a point;
13. south 15 degrees – 20 minutes – 59 seconds east, 56.37 feet to a point;
14. south 10 degrees – 07 minutes – 33 seconds east, 193.27 feet to a point;
15. south 04 degrees – 06 minutes – 40 seconds east, 119.47 feet to a point;
16. south 11 degrees – 45 minutes – 38 seconds east, 20.36 feet to a point;

Thence, leaving said road, north 89 degrees – 03 minutes – 30 seconds east, 12.95 feet to an iron pin set;

Thence, south 04 degrees – 46 minutes – 29 seconds east, 641.53 feet to an iron pin set;

Thence, south 89 degrees – 11 minutes – 03 seconds west, 340.78 feet to an iron pin set;

Thence, north 05 degrees – 36 minutes – 04 seconds west, 641.46 feet to an iron pin set;

Thence, north 89 degrees – 03 minutes – 30 seconds east, 311.60 feet to a point;

Thence, along the westerly line of aforesaid existing road, the following fifteen (15) courses and distances:

1. north 11 degrees – 45 minutes – 38 seconds west, 17.26 feet to a point;
2. north 04 degrees – 06 minutes – 40 seconds west, 119.83 feet to a point;
3. north 10 degrees – 07 minutes – 33 seconds west, 190.81 feet to a point;
4. north 15 degrees – 20 minutes – 59 seconds west, 54.51 feet to a point;
5. north 18 degrees – 39 minutes – 43 seconds west, 117.43 feet to a point;
6. north 16 degrees – 26 minutes – 15 seconds west, 254.79 feet to a point;
7. north 13 degrees – 20 minutes – 46 seconds west, 51.55 feet to a point;
8. north 07 degrees – 54 minutes – 06 seconds west, 37.29 feet to a point;
9. north 01 degrees – 10 minutes – 03 seconds west, 179.74 feet to a point;
10. north 10 degrees – 14 minutes – 47 seconds east, 55.73 feet to a point;
11. north 23 degrees – 44 minutes – 26 seconds east, 55.30 feet to a point;
12. north 43 degrees – 07 minutes – 08 seconds east, 225.26 feet to a point;
13. north 49 degrees – 49 minutes – 29 seconds east, 51.07 feet to a point;
14. north 56 degrees – 04 minutes – 49 seconds east, 47.79 feet to a point;
15. north 63 degrees – 33 minutes – 38 seconds east, 115.54 feet to a point;

Thence, north 90 degrees – 00 minutes – 00 seconds east, 42.20 feet to the *point of beginning*, and containing 5.979 acres more or less.

Also being retained herein is the following described *twenty-five (25) foot wide ingress/egress easement*: Beginning in the centerline of Township Road #442 at the northeast corner (point of beginning) of the above-described parcel, thence, along the east line of aforesaid existing road, the following sixteen (16) courses and distances:

1. south 51 degrees – 09 minutes – 41 seconds west, 28.93 feet to a point;
2. south 63 degrees – 33 minutes – 38 seconds west, 123.44 feet to a point;
3. south 56 degrees – 04 minutes – 49 seconds west, 44.79 feet to a point;
4. south 49 degrees – 49 minutes – 29 seconds west, 48.24 feet to a point;
5. south 43 degrees – 07 minutes – 08 seconds west, 219.53 feet to a point;
6. south 23 degrees – 44 minutes – 26 seconds west, 48.07 feet to a point;
7. south 10 degrees – 14 minutes – 47 seconds west, 50.28 feet to a point;
8. south 01 degrees – 10 minutes – 03 seconds east, 175.77 feet to a point;
9. south 07 degrees – 54 minutes – 06 seconds east, 34.63 feet to a point;
10. south 13 degrees – 20 minutes – 46 seconds east, 49.69 feet to a point;
11. south 16 degrees – 26 minutes – 15 seconds east, 253.63 feet to a point;
12. south 18 degrees – 39 minutes – 43 seconds east, 117.66 feet to a point;
13. south 15 degrees – 20 minutes – 59 seconds east, 56.37 feet to a point;
14. south 10 degrees – 07 minutes – 33 seconds east, 193.27 feet to a point;
15. south 04 degrees – 06 minutes – 40 seconds east, 119.47 feet to a point;
16. south 11 degrees – 45 minutes – 38 seconds east, 20.36 feet to a point;

Thence, south 89 degrees – 03 minutes – 30 seconds west, 25.45 feet to a point; thence, along the west line of aforesaid road, the following fifteen (15) courses and distances:

1. north 11 degrees – 45 minutes – 38 seconds west, 17.26 feet to a point;
2. north 04 degrees – 06 minutes – 40 seconds west, 119.83 feet to a point;
3. north 10 degrees – 07 minutes – 33 seconds west, 190.81 feet to a point;
4. north 15 degrees – 20 minutes – 59 seconds west, 54.51 feet to a point;
5. north 18 degrees – 39 minutes – 43 seconds west, 117.43 feet to a point;
6. north 16 degrees – 26 minutes – 15 seconds west, 254.79 feet to a point;
7. north 13 degrees – 20 minutes – 46 seconds west, 51.55 feet to a point;
8. north 07 degrees – 54 minutes – 06 seconds west, 37.29 feet to a point;
9. north 01 degrees – 10 minutes – 03 seconds west, 179.74 feet to a point;
10. north 10 degrees – 14 minutes – 47 seconds east, 55.73 feet to a point;
11. north 23 degrees – 44 minutes – 26 seconds east, 55.30 feet to a point;
12. north 43 degrees – 07 minutes – 08 seconds east, 225.26 feet to a point;
13. north 49 degrees – 49 minutes – 29 seconds east, 51.07 feet to a point;
14. north 56 degrees – 04 minutes – 49 seconds east, 47.79 feet to a point;
15. north 63 degrees – 33 minutes – 38 seconds east, 115.54 feet to a point;

Thence, north 90 degrees – 00 minutes – 00 seconds east, 42.20 feet to the point of beginning, and the terminus of this easement.

Bearings described herein are based upon assumed azimuth and to be used for angle purposes only.

Iron pins set are 5/8" rebar with yellow identification cap (Finley S-7222).

Part of Auditor's Parcel #66-80-17-05-000.

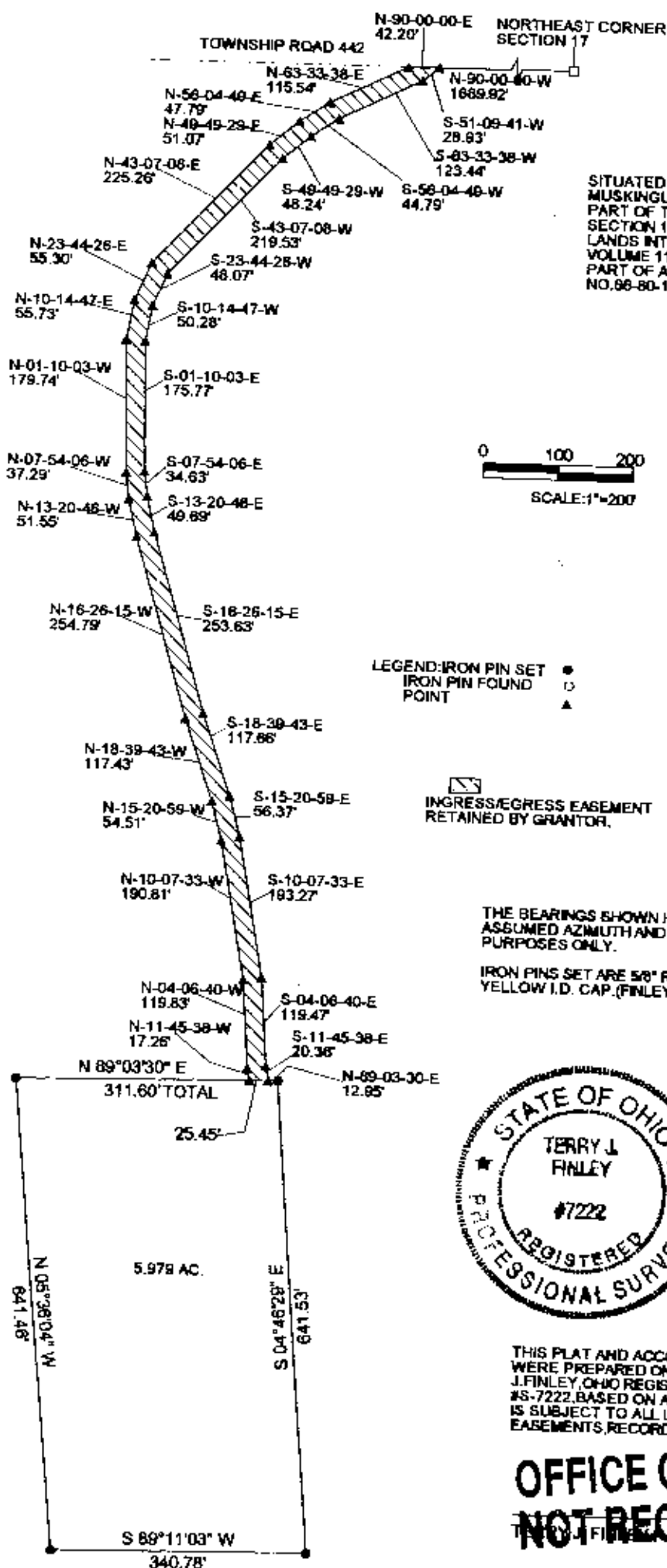
This description, written on May 21, 2004, is based on an actual survey of the premises by Terry J. Finley, Registered Surveyor #S-7222.



Terry J. Finley, Registered Surveyor #S-7222

DESCRIPTION APPROVED
FOR AUDITOR'S TRANSFER

BY [Signature]
5-25-2004



SITUATED IN THE STATE OF OHIO, COUNTY OF MUSKINGUM, TOWNSHIP OF UNION AND BEING PART OF THE NORTHEAST QUARTER OF SECTION 17, T-1, R-5, BEING PART OF THOSE LANDS INTENDED TO BE DESCRIBED IN DEED VOLUME 1118, PAGE 517, PART OF AUDITOR'S PARCEL NO. 66-80-17-05-000

0 100 200
SCALE: 1"=200'

LEGEND: IRON PIN SET ●
IRON PIN FOUND ○
POINT ▲

INGRESS/EGRESS EASEMENT
RETAINED BY GRANTOR.

THE BEARINGS SHOWN HEREON ARE BASED ON ASSUMED AZIMUTH AND USED FOR ANGLE PURPOSES ONLY.

IRON PINS SET ARE 5/8" REBAR WITH YELLOW I.D. CAP. (FINLEY S-7222)

DESCRIPTION APPROVED
FOR AUDITOR'S TRANSFER

BY *[Signature]*
5-25-2004



THIS PLAT AND ACCOMPANYING DESCRIPTION WERE PREPARED ON MAY 20TH, 2004 BY TERRY J. FINLEY, OHIO REGISTERED SURVEYOR #S-7222, BASED ON AN ACTUAL SURVEY AND IS SUBJECT TO ALL LEGAL HIGHWAYS AND EASEMENTS, RECORDED OR IMPLIED.

**OFFICE COPY
NOT RECORDABLE**

TERRY J. FINLEY SURVEYING AND MAPPING

155 MOCKINGBIRD HILL

ZANESVILLE, OHIO 43701

DATE: 5/20/2004

SCALE: 1"=200'

DRAWN BY: T.J.F.