

PERTINENT DOCUMENTS  
DEEDS  
SURVEYS  
COUNTY GIS MAP

# LEGEND !

- IRON PIN SET CAPPED "G. SALING-7192"
- IRON PIN FOUND CAPPED "G. SALING-7192"
- IRON PIN FOUND CAPPED "McPEEK-8517"
- IRON PIN FOUND UNCAPPED
- STONE MONUMENT FOUND
- ▲ MAG NAIL SET
- SURVEY ANGLE POINT

SURVEY PLAT OF 1.330 ACRES  
RONALD B HALLOWELL  
PART OF 66-80-17-09-001  
SECTION 17, UNION TOWNSHIP.  
MUSKINGUM COUNTY OH.  
TOWNSHIP 1 NORTH, RANGE 5 WEST  
REF : OFFICIAL RECORD 2989 PAGE 275  
NOVEMBER 27, 2024

BEARINGS ARE FROM A GPS OBSERVATION AND ARE FOR ANGLE CALCULATIONS ONLY  
BASED ON THE NORTH LINE OF SECTION 17 OF UNION TOWNSHIP AND USED AS  
S87° 20' 57"E

Reduced copy, not to scale, Larger  
copy available in the Muskingum  
County Engineer's Map Dept.

**OFFICE COPY**  
**NOT RECORDABLE**

SURVEYED BY:  
GARY D. SALING  
REGISTERED SURVEYOR  
# S - 7192

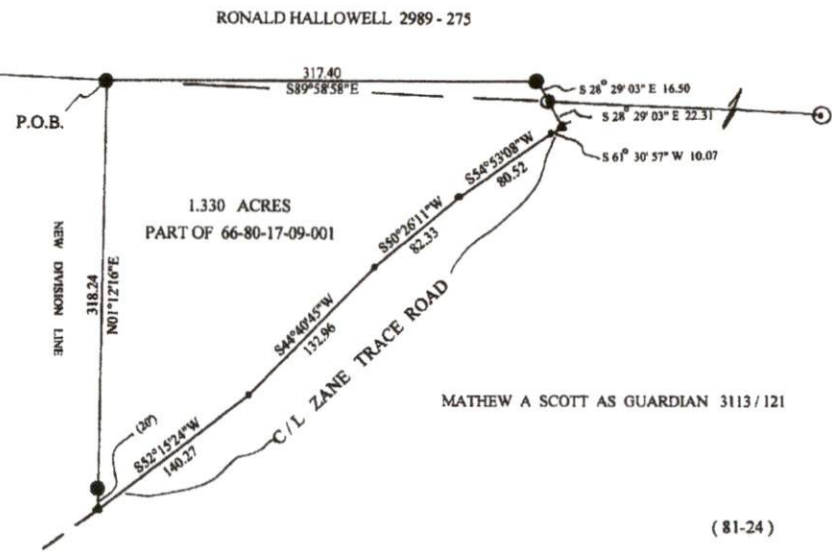


RONALD HALLOWELL 2989 - 275

GARY D. SALING  
OHIO REGISTERED SURVEYOR



SALING SURVEYING 740 439 - 2057  
744 1/2 SOUTH 9th STREET  
P. O. BOX 1554  
CAMBRIDGE, OHIO 43725



MATHEW A SCOTT AS GUARDIAN 3113 / 121

DESCRIPTION  
APPROVED

By: *[Signature]* 11/7/2020

DATE 11/25  
APPROVED  
MUSKINGUM COUNTY  
PLANNING COMMISSION DIRECTOR