

### SITUATED IN

The State of Ohio, County of Muskingum  
Township of Washington, Military Lot 23,  
Quarter Township 4, Township 2, Range 7,  
United States Military Lands.

### LEGEND

- Iron Pin Set (5/8" MCPEEK PS 8517)
- Iron Pin Found
- Axle Found
- ☒ Stone Found
- Unmarked Point
- ⊙ Gin Pin Set
- Z- Property Hook

### REFERENCES

\* As Noted on Plat  
[www.muskingumcountyauditor.org](http://www.muskingumcountyauditor.org)  
[www.mceo.org](http://www.mceo.org)  
<http://recorder.muskingumcounty.org>  
Previous survey by: Newcome, 2017

### LINE TABLE

LINE	BEARING	DISTANCE
L1	S 02°36'09" W	5.00'
L2	S 30°53'03" W	34.42'
L3	N 86°19'18" W	24.29'
L4	S 80°32'37" W	28.92'
L5	S 60°01'16" W	40.45'
L6	S 50°25'46" W	38.71'
L7	S 54°47'54" W	35.93'
L8	S 66°19'11" W	38.95'
L9	S 76°18'59" W	36.24'
L10	S 83°34'52" W	51.94'
L11	S 84°11'00" W	50.82'
L12	S 83°10'08" W	19.88'

### DESCRIPTION

APPROVED

By: *[Signature]*



**OFFICE COPY  
NOT RECORDABLE**

Brian Kelly McPeck  
Reg. Surveyor No. 8517

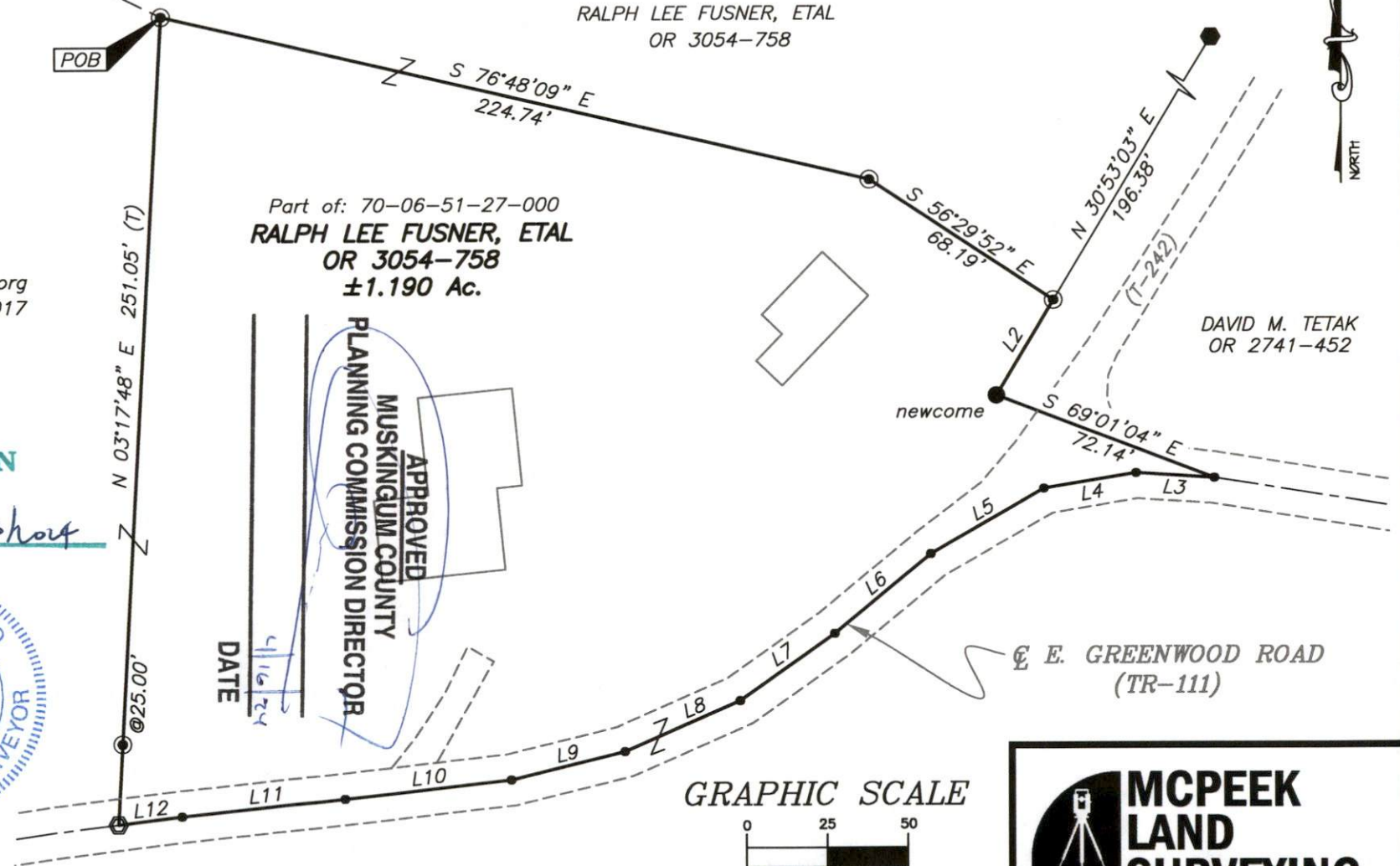
This plat was prepared by McPeck Land Surveying, LLC  
in accordance with Chapter 4733-37 of the Administrative Code,  
and is intended to be used for the legal transfer of the property  
described and does not intend to describe all or any easements of  
record, nor encroachments unless otherwise intended.

Stone Found at the  
Northwest Corner of  
Military Lot 23, Quarter  
Township 4, T2, R7,  
U.S.M.L.

### BASIS OF BEARING

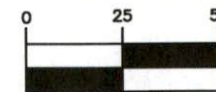
Bearings are based on State Plane  
Grid Coordinates, NAD83, Ohio South,  
per GPS Observation.

### Survey Split



RALPH LEE FUSNER, ETAL  
OR 3054-758

### GRAPHIC SCALE



( IN FEET )  
1 inch = 50 ft.



www.mcpeeklandsurveying.com  
email: brian@mcpeeklandsurveying.com  
1705 East Pike, Zanesville, Oh 43701 \* 740.704.6073